

WITHINGTON AUCTION Inc.

*Dolls
at
Auction*

August 8 & 9, 2019



WITHINGTON AUCTION, Inc.

Dolls at Auction - August 7-8-9, 2019
Ann Hastings Collection - Playing with dolls for 44 Years!

AUCTION SALE **2575 & 2576**

PREVIEWS

DOLL SHOW **& SALE**

HOTEL INFO

WEB-SITE **ABSENTEE** **BIDDING**

TERMS

STAFF

CONSIGNING **Your Collection**

CONTACT **603-478-3232** **FAX-478-3233**

Thursday & Friday - August 8 & 9, 2019

Holiday Inn Nashua, NH - 603-888-1551 (for reservations)

AUCTION STARTS - 10:00 AM

August 7 - Wed. Evening: 7 - 9

August 8 - Thurs. Morning: 8 - 10 & Evening: 7 - 9pm

August 9 - Fri. Morning: 8 - 10

Aug. 7 - 1 - 6 pm *or by Chance....OPEN TO THE PUBLIC!*
3rd Floor Hotel Rooms - Space is Limited - ROOM SELLING
Call at the Holiday Inn 603-888-1551 for Reservations
*BUY * SELL * TRADE - Buyer's & Seller's Meet 'n Greet*

Holiday Inn, 9 Northeastern Blvd. Nashua, NH
Exit 4 off Everett Turnpike / Route 3 - On the West side of highway
Turn right at the light onto Northeastern Blvd.
(PETS ARE WELCOME - ASK FOR THE DOLL RATE)

Full Color Catalogue - \$15. (View Cat on-line & More photos)
ABSENTEE BIDDING & TELEPHONE BIDDING ACCEPTED -
BIDDER FORMS ARE AVAILABLE ON OUR WEB-SITE

www.withingtonauction.com For Info: Tel: (603)- 478-3232

RETURNS: All items **MUST** be inspected and returned within 10 minutes of purchase - **if not as described in catalogue.** and be of \$ 100.00 valuation or more to qualify for a refund - Due to the sufficient time allowed for inspecting the dolls, The following items are sold **AS-IS:** All bodies are sold AS-IS; . All Paper Dolls; Artist Dolls; Madame Alexander dolls, non picture dolls, extras, and all Box lots (as-is). Speckling and wear are normal conditions for Bisque and China dolls, therefore it will be up to the buyer to inspect for these conditions. Items designated AS-IS are FINAL SALES.

15% Buyer's Premium - Discounted to 12% for Cash or Check
Visa & Mastercard accepted - No NH Sales Tax

Larry Leizure - Pres. Appraiser, Doll Specialist, Restoration Carpenter, plumber, etc. etc...
Marcia Leizure - NH Auctioneer's Lic. # 4028, Trucker, Events, Writer, Graphic Design. etc...
Bob Bouchard - Buildings & Grounds / Asstt Doll Specialist, Warehouse manager...
Barbara Scully - Asst. Auctioneer, Doll Specialist & Consultant, Social Media, events...
Mary Dominick - Photography, Chief clerk, Events team,
Linnea Steeves - Administrative Asst. Events, Archives, Organizational Specialist
Dolores Smith - June 1940 - Oct. 2018, "The Doll world will never be the same without you!"
Dick Withington 1918 - 2008 NH Lic. #1 "The Nation's Leading Doll Auctioneer"

Thinking about Selling your dolls? But don't know how to begin....
Withington's can answer your questions about the Auction process.
E-Mail photos or inventory for a free appraisal. 2019 Auctions - August & October

WITHINGTON AUCTION, INC.

17 Atwood Road Hillsborough, NH 03244
E-mail: withington@conknet.com - WEB: www.withingtonauction.com

*****GREETINGS***** August 2019

FROM THE DOLLHOUSE

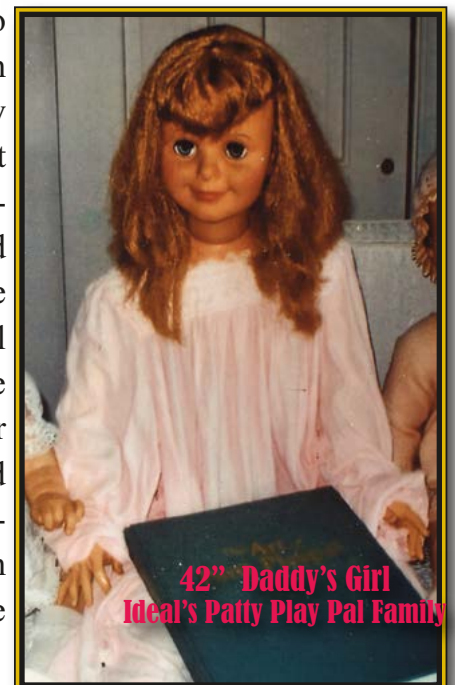
WITHINGTON AUCTION, Inc.

Hillsborough, NH

All of us at the dollhouse are still coming down off the "high" generated by the outstanding auction of the Doll collection of Dolores Smith back in May. Our crew made a dozen or more trips to the Smith home to pack up the dolls, yet we're still not finished, so Larry, Bob and I headed over to Candia to finish packing up the residuals of Dolores's collection. Reflecting back on the events of last summer, it will be a year in August, when Dolores' health started to deteriorate... and she lost her valiant fight against liver cancer passing away the end of October. The Dollhouse is just not the same without her... we are alive ... but sure could use an heart transplant! Her presence is everywhere: in the sweaters on her chair, to the jungle mocks under her desk. We have left these remnants of Dolores, in some ways a reminder of what was...she is gone but her spirit is still present. I kind of like having her around as our guide, to help us continue the work she started... we often think, "What would Dolores do?"

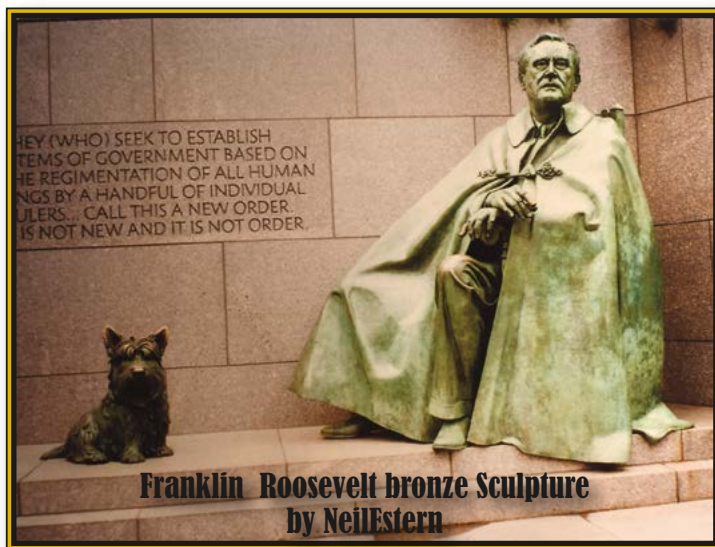
Remarkably, the August auction, primarily the doll collection of Ann Hastings, has been finished since early May, for the passing of our dear doll friend, Ann Hastings occurred around the same time as Dolores' and the dolls needed to be removed from the house ASAP. Dick Withington was especially fond of Ann, often interrupting an auction to greet her, *"So nice to see you Mrs. Hastings!"* And she would blush like a school girl at the special attention from the illustrious Mr. Withington! Over the years we often have had doll calls, from the heirs of well-known doll collectors... it seems that our name was often jotted in the margin of the will...*"Have Withington sell my dolls"*. Old Dick, the tireless self-promoter, would announce at a doll auction.... *"Write my name in the margin of the will!"* And so many did just that. Together with Mrs. Hastings' dolls, additions from old doll friends have gone to the international doll convention in the sky... and Larry and I have deferred our retirement for another year.

Both Ann and Dolores were New Hampshire based, were active members of the local doll clubs and frequented the local shows. The dolls were an important part of both families.... having a place of honor in every room of the house. Withington Doll Auctions were "not-to-be-missed" events and both collections can trace their ancestry to the Highway Hotel Concord, or to Holiday Inn, Nashua auctions. Ann, in her later life, had to depend on friends for a ride to the auctions, she was a bit too nervous for highway driving. She made every effort to come, if only for a few hours.... Most of the time she came late like she miraculously appeared in the audience..... "Nice to see you, Mrs. Hastings!" I noticed that she would bid on a few choice items, and usually persist until she got what she came for. I recall, many years ago, Ann was bidding on a large (42" tall), vinyl doll known as "Daddy's Girl". I remember thinking, "How odd", to see this dignified Old gal, struggling to carry this voluptuous pre-teen to her car. On the loose side, she was disheveled, badly in need of stringing, and her arms and legs dangled every which way. Her bleached blond pony-tailed head, smiled cheerfully as if she knew that Ann somewhat of an authority on this doll...could appreciate her lineage as a member of the family!



Every Christmas, Ann sent out her Christmas package to a selected few and Withington's was privileged to be on her "list." The package contained inspirational thoughts and photos of her featured doll family members..... along with an entertaining and informational poem she called a "Terse Verse". I recall one Christmas, the featured doll was Patty Play Pal (PPP), to my amazement this iconic doll family of the 1960"s was sculpted by Neil Estern, the renown sculptor, famous for his bronzes of Franklin and Eleanor Roosevelt, and many others including JFK and Princess Di. Like no other dolls of this period, the expert sculpting of these vinyl dolls elevated their status in the doll world to some of the finest vinly dolls ever made..... creating among others, the most life-like Shirley Temples of all!

Ann was a woman of many talents, from a musical family, there were TWO Steinway pianos in the living room... Surrounded by the audience of her life-like PPP collection. The (Ann) Hecker / Hastings Bandstand in Stark Park was Ann's gift to the city she loved, long been a popular gathering place in Manchester during the summer, bringing music to the multitudes. Music may have been her first love, but the dolls came into her life and occupied her world for more than fifty years. Probably inspired by her mother and grandmother, she methodically added to the collection, and systematically cataloged the



Almost every doll you see in my pictures are from your auctions. (I don't go to any others,) I wanted you to realize the connection between Neil Estern and the Patti Playpal family. Anyone who has one of his dolls has a "creation" of one of America's foremost sculptors.

Hope you folks are getting a little rest + "catch-up" time this winter, but also hope many good dolls are "rolling in."

Perhaps you realize I have a house full of dolls, & someday you folks will have to face it!! But I'm planning to stay around at least a little longer & enjoy this doll-family of mine!

Thanks for all you folks do to make the auctions such fun & pure joy! And many thanks for the doll catalogues you send me! My best to you all - with love, Ann

name, date, origin and purchase price and almost all the dolls still retain their provenance. Her taste in dolls did run the gamut... from early Papier Mache or French to a hundred years of Kathe Kruse.. she even has the iconic Kruse Mannequin (standing along side the PPP collection), and an example of the obscure of the Schlenkerchen.. the only Smiling Kruse, and the 4-foot Chase boy fit right in. There was a plethora of smaller dolls, too: Googlies, all bisque, French Fashions, and the names of Bru and Jumeau were well represented. A patron of the doll arts, Ann had many examples of the dolls of listed Doll artists: Emma Clear, Gertrude Florian, Jane Bradbury, Dewees Chochran, RJ Wright, and among the many examples of dolls of the Royal Family is a set created by Martha Thompson.

Living into her nineties, Ann had a lifetime intertwined with the dolls: attending doll club meetings and shows, and of course the Withington auctions, and years of study and research. With her vast knowledge and the ability to acquire anything, a few dolls on her wish list often accompanied her home to Manchester. You will be surprised at the diversity and quality of this lifetime collection.

From Ann Hastings' Christmas Letter 2013
...forecasting the future

In the early spring, we journeyed to Thomaston, Maine to pick up a collection of "museum quality" dolls. One can never be sure of what to expect... but the collection was over 85 years old, started by the grandmother, passed on to the daughter... all antique clothing and shoes... together with the few photos, we traveled North with cautious optimism. We planned a 6:00am departure, and with the warming sun and bright blue skies Lynn and I were enthusiastic about our first road trip of 2019... Thelma and Louise the sequel. The traffic was light and it was too early for the thrift stores to be open, so we arrived at a lovely white cape-style house, with the carriage house and ells connecting to the main house. The house was immaculate!! It was like a time capsule of the antiques world of the 1950's. A few dolls were displayed in vignettes in the sitting room and the dining room, but the collections of quality Flo Blue china and Cranberry glass were lovingly displayed in every window sill, plate rack and china cupboard... and there was NO Dust! That's how Mother always kept the place - into her 85th year she maintained a standard which was applied to all her treasures. The tour continues.... into the parlor - many dolls and figurines, on shelves, on top of chests color-coordinated. Through the stair hall and the matching mahogany and glass displays were a fine choice for the larger dolls... on either side of the front door... Like a good book the collection builds with anticipation.. and enter a small bedroom and there are for more glass cases... showing 200 years of dolls: from early Chinas, Rags, Papier Mache, bisque right up to a few artist dolls to boot. Through the secret entry door, through the closet, and there were two cases of excellent dolls - Jumeaux, some fashions, an all original French Bebe with trunk and wardrobe..... they decided to keep...Darn!! There were so many wonderful wicker carriages... in doll's size... Several Joel Ellis buggies with the fringe on top... Trunks of dolls in the upstairs rooms, wooden toy parts and pieces in attic of the carriage house..... just so many interesting things... The husband had passed on years ago and restored toys for years... who would want them now? In retrospect, this doll call was better than some... and not as good as others. Most of the dolls were perfect, in original antique dresses and shoes.. flowing mohair wigs.... but many were really large - 28 to 32 inches... but on the plus side.. Most were Kestners! We found boxes of K*R's 114, 101, Smiling Jumeau, French Fashions ... but all artist made... and we didn't have to take them!! Son-in-Law Bob, was the perfect host... helped if we needed a hand, left to do errands and brought back Ben and Jerry's ... on a warm spring day it was a welcome treat.

We have started the catalog for the final auction of the 2019 season - November 6-7-8, mark your calendars. October is such a busy month with three doll shows in Massachusetts and Connecticut... and another in Virginia. The annual meeting of the Doll Collectors of America gathers at the Wentworth by the Sea, at Rye Beach, NH. on the first weekend in November. Often we are asked why we don't have an auction to tie in with that gathering. Wendy Collins has the Seacoast Show in Portsmouth the Sunday after.... so why not shake things up and have the October auction in November! I'm sure it will not please everyone... but something I've learned along the way - Ya can please some of the people all of the time... Ya can please all of the people some of the time.... and some people you will never please!! The only person you can really please is yourself....and I'm really looking forward to savoring the amazing autumn season in New Hampshire for a change.

Auction Info: August 7-8-9

Holiday Inn, 9 Northeastern Blvd. Nashua, NH - for reservations call: 603-888-1551 ask for Laurie.

Visit our Website: www.withingtonauction.com or call The Dollhouse: 603-478-3232

Sincerely, Marcia & Larry Leizure

August 8 & 9, 2019

WITHINGTON AUCTION, Inc.

Hillsborough, NH

A terse
Doll history
In verse

Patti's Family
by Ann E. Hastings
2013

So often when I look in to the life-like face
Of an Ideal Patti Playpal doll,
I think of Neil Estern's masterpieces
At the Roosevelt Memorial in the Washington Mall.
Neil considered the 3,300 pound sculpture of the President
The pinnacle of his career.
And I consider his Patti Playpal family,
Of all his doll sculptures, the most dear.
For two years I've rimed and raved about Patti,
Peter, and their relatives galore,
And this year I'm concluding
With just four more.
On your far left is little sister Suzy,
A chubby 28 inch one-year old.
Suzy's feet are angled, almost tiptoe,
And IDEAL OB - 28" is her mold.
Next, in white, is Patti's cousin, Bye-Bye Baby,
Twenty-five inches, issued in 1960 and 1961.
For the most life-like limbs and torso in a baby doll,
This is considered by experts, number one!
My forty-two inch "Daddy's Girl" with her contagious smile
Is a perfect representation of a leggy pre-teen girl.
Her hair falls well past her shoulders
And has just enough curl.
Though I rimed about Saucy Walker last year,
I feature her once more.
This Saucy is a younger version,
Another darling baby I truly adore.
In addition to Estern's Washington sculptures of FDR,
His Scottish terrier, Fala, and wife Eleanor,
In New York there's a huge statue of La Guardia
And a bust of President Kennedy, making one more.
But Estern has also had commissioned portraits of
J. Edgar Hoover, Jimmy Carter, Calvin Vaux, and Danny Kaye,
Frederick Law Olmstead, and Princess Diana
Along his prestigious way.
But I am satisfied to own his Giggles, Thumbelina,
Betsy Wetsy, and Cinnamon, an Ideal 1971 doll.
Also a life-size Ideal Heidi,
One of the most life-like Shirley Temples of all.

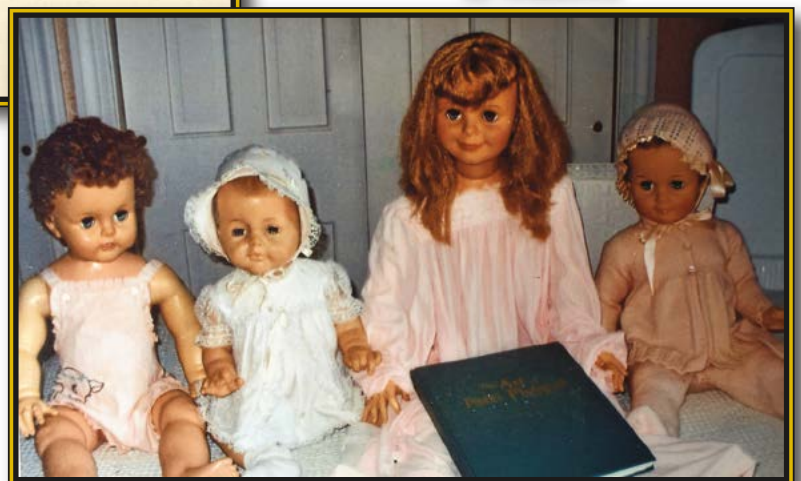


**Eleanor Roosevelt bronze Sculpture
by NeilEstern**



**Patty Play Pal Family sculpted
by NeilEstern**

A terse verse...
A doll history in Verse....
Ideal's Patty Play Pal
by Ann Hecker Hastings



August 8, 2019 - Day 1 - Picture Dolls

- 1001 13" BISQUE HEAD INC. SIMON HALBIG 1159**, blue glass eyes, O/M, compo body, mohair wig glued down, (right ankle repair, broken finger on right hand, broken thumb on left hand)
- 1002 11 ½" BISQUE HEAD BOY, BROWN GLASS EYES**, closed mouth, kid body with bisque arms (damage to finger left hand), sculpted & painted hair
- 1003 12" BLONDE HAIR PARIAN SHOULDER HEAD "DAGMAR"**, painted blue eyes, cloth body, blonde sculpted hair with black bow, (scratches to left lower cheek area.
- 1004 14 ½" JOEL ELLIS JOINTED WOOD DOLL**, pewter hands & feet, jointed wood body, painted features (hair repaint, loss to right side hair), original dress
- 1005 12" BISQUE HEAD RED STAMP DEPOSE TETE JUMEAU** Bte S. G.D. G. 3, blue gl. eyes, closed mouth, P.E., jointed compo body, straight wrists, blue stamp Jumeau body, (pate glued down)
- 1006 18" BISQUE SHOULDER HEAD INC. "DAISY" BROWN SLEEP EYES**, O/M, blonde HH wig, kid body w/ bisque arms (replaced?), (left eye sm. corner nick), (wig glued down), plaster pate
- 1006A 18" GENERAL DOUGLAS MACARTHUR COMPOSITION DOLL**, molded hat, original khaki uniform, Freundlich Novelty Corp. (needs stringing, left arm loose) (*No Picture*)
- 1007 10 ½" BISQUE SOCKET HEAD INCISED A/H2P**, French Fashion type, blue glass eyes, closed mouth, mohair wig (glued down), original dress with red ink label Bebe Charmant, 5 piece compo body, probably by Pintel & Godchaux
- 1008 12" BISQUE HEAD FRENCH FASHION INCISED 0**, blue glass eyes, closed mouth, pierced ears, kid body, mohair wig, early clothing
- 1009 18" BISQUE SHOULDER HEAD INCISED 1011**, blue glass eyes, open mouth with teeth, pierced ears, mohair wig, kid body with bisque arms, (wig pulls, excessive wig glue, face rubs)
- 1010 22" BISQUE HEAD RED LABEL DEPOSE TETE JUMEAU** Bte S.G.D.G. 10, blue glass eyes, closed mouth, P.E., jointed blue stamp Jumeau body , replaced shoes, Ex Sotheby's Auction
- 1011 24" BISQUE HEAD RED LABEL DEPOSE TETE JUMEAU BTE**, S. G. D. G. 11, brown glass eyes, closed mouth, pierced ears, jointed compo body, blue stamp Jumeau body, (minute eye fleck corner right eye), Ex – Theriault's sale, (excess wig glue)
- 1012 22" BISQUE HEAD INC. BRU JNE R 11**, blue glass eyes, closed mouth, P.E., mohair wig, kid body with bisque arms, (body has some rough spots, patch & leaking), early outfit (melting)
- 1013 6 DRAWER WALNUT/MAPLE DECK TOP CHILD'S BUREAU** with mirror frame (mirror missing), 4 bird's eye maple drawers over 2 long drawers, 18" long, x 9" deep, x 28" tall
- 1014 26" BLONDE SCULPTED HAIR PARIAN S/H**, blue eyes, closed mouth, kid body (leg split), early outfit
- 1015 34" x 46" STAINED/LEADED GLASS WINDOW** of blue bonnet child with umbrella, (one small piece of glass missing), plexi-glass lined in the back
- 1016 19" BISQUE HEAD RED STAMP DEPOSE TETE JUMEAU**, blue glass eyes, PE, (Left nick), CM, compo body (crazing, nicks), mohair wig, blue coat & hat



1001



1002



1003



1004



1005



1006



1007



1008



1009



1010



1011



1012



1013



1014



1015



1016

Withington Auction, Inc. Dolls at Auction - August 8 & 9, 2019
No Inspections of Dolls { 7 } Lots after the auction begins



1017



1018



1019



1020



1021



1022



1023



1024



1025



1026



1027



1028



1029



1030



1031



1032

*Withington Auction, Inc. Dolls at Auction - August 8 & 9, 2019
No Inspections of Dolls { 8 } Lots after the auction begins*

1017 LOT 3- DOLORE'S PROJECT DOLLS: 10 1/2" Bisque S/H, Sonnenberg, brown gl. eyes, PE, Mohair, C/M, kid body w/ bisque hands (firing line back of head); 9" Bisque, blue gl. eyes, C/M, mohair, BJCB, & 9" dome head inc. 110, Brown Gl. eyes, mohair, CM, BJCB

1018 3 – PIECE ANTIQUE SILK FRENCH FASHION WALKING SUIT, for 28"-30" doll, gathered dress with bustle & train for 12" waist, fitted jacket with velvet trim & tassels, and matching hat, browns & teal (some silk melting)

1019 24" BISQUE HEAD INCISED A.19 PARIS S. ANTOON 1988, (artist) on an antique French compo body, HH wig, glass eyes C/M, repro dress

1020 23" BISQUE HEAD INCISED D SFBJ 60 PARIS, brown sleep eyes, open mouth with teeth, (face rubs), BJCB, new outfit

1021 14" MILLINERS MODEL, PAPER MACHE HEAD, sausage curls, exposed ears, painted features, (nose rub), kid body, wooden limbs, antique clothes

1022 15" BISQUE HEAD INCISED 5, JUMEAU, brown glass eyes, C/M, PE, HH wig, blue stamp Jumeau compo body, (wear to fingers)

1023 16 1/2" FRANKLIN PIERCE PARIAN SHOULDER HEAD (hairline on left shoulder), blonde hair, molded bodice, painted features, cloth body, bisque arms & legs

1024 17" BISQUE HEAD BOY INCISED 2048, brown glass sleep eyes, O/M, BJCB, painted blonde hair, "Tommy Tucker"

1025 16" BISQUE HEAD TODDLER K*R S H 115A, blue glass sleep eyes, C/M, BJCB, (fingers have some rough spots), with Chippendale chair

1026 8" BISQUE HEAD BABY INCISED PM23 GERMANY, blue glass sleep eyes, O/M, with teeth, baby compo body

1027 15" BISQUE HEAD BOY INCISED K*R 115, brown glass sleep eyes, O/CM, painted blonde hair, (piece cut out of back of neck), Velma Driscoll Collection

1028 14" BISQUE SHOULDER HEAD FRENCH FASHION INCISED 1, blue glass eyes, C/M, PE, mohair wig (glued down), kid body, antique dress

1029 12" BISQUE HEAD BOY INCISED HEUBACH 7602, intaglio eyes, C/M, compo baby body, with small Teddy Bear

1030 14" BISQUE HEAD W/ 3 FACES, sleeping, crying, smiling, cloth body, (cheek rubs)

1031 24" BISQUE HEAD TETE JUMEAU 10, Blue glass eyes (reset), O/M with teeth, PE, jointed French comp body, (large repair to forehead)

1032 11" BISQUE HEAD INCISED K*R 101, Marie, painted eyes, C/M, BJCB, mohair wig

- 1033 12" BISQUE HEAD INCISED K*R 101, PETER**, painted eyes, C/M, BJCB, mohair wig
- 1034 7 ½" BISQUE HEAD GOOGLY INCISED GERMANY 323 A 10 0 M**, C/M, compo body with painted shoes/socks, mohair wig
- 1035 16" BLONDE HAIR PARIAN SHOULDER HEAD**, painted features, PE, blue ribbon in hair, C/M, cloth body, (right cheek repair?)
- 1036 10" BISQUE HEAD INCISED K*R 114, HANS**, blue glass eyes, C/M, BJCB, mohair wig, Zelda Cushner Collection
- 1037 8" BISQUE INCISED K*R 101**, painted eyes, C/M, compo body with painted shoes & socks, original outfit
- 1038 7" BISQUE HEAD GOOGLY INCISED GERMANY 323 A 10 0 M, C/M**, compo body with painted shoes/socks, mohair wig (wig glue around rim)
- 1039 4 ½" ALL BISQUE GOOGLY INCISED 189**, jointed shoulder & hips, brown glass eyes, mohair wig, molded shoes & socks, wig glued down
- 1040 7 ½" GOOGLY BOY INCISED HEUBACH GERMANY**, blue glass eyes, C/M, mohair wig, compo body, painted shoes (right shoe cracked)
- 1041 6 ½" GOOGLY INCISED WS WALTHER & Co.**, blue glass eyes, C/M, mohair wig, compo body with painted shoes/socks, (wig glued down)
- 1042 8 ½" GOOGLY INCISED WS**, blue glass eyes, C/M, mohair wig, compo body with painted shoes/socks
- 1043 6 ½" GOOGLY INCISED GERMANY 323 A 11/0 M**, blue glass eyes, C/M, mohair wig (glued down), compo body with painted shoes/socks
- 1044 12" X 7" AUTOMATON MUSIC BOX** with two bisque head dolls incised AM390, when handle is turned music box plays & dolls play symbols
- 1045 32" BISQUE HEAD RED STAMP DEPOSE TETE JUMEAU 15**, blue glass eyes, C/M mohair wig, replaced pate, hands, French compo body, (professional repairs to head)
- 1046 23" BISQUE HEAD INCISED EDEN BEBE PARIS 11 DEPOSE**, blue glass eyes, O/M with teeth, PE, mohair wig, BJCB, (hairline left ear to rim)
- 1047 7" BISQUE KESTNER INCISED 1 ½**, brown glass eyes, C/M, original wig, BJCB
- 1048 11" PARIAN SHOULDER HEAD**, blonde molded hair, blue painted eyes, cloth body with leather arms (finger damage, right arm pinned), with Federal side chair



1033



1034



1035



1036



1037



1038



1039



1040



1041



1042



1043



1044



1045



1046



1047



1048

*Withington Auction, Inc. Dolls at Auction - August 8 & 9, 2019
No Inspections of Dolls {11} Lots after the auction begins*



1049



1050



1051



1052



1053



1054



1055



1056



1057



1058



1059



1060



1061



1062



1063



1064

*Withington Auction, Inc. Dolls at Auction - August 8 & 9, 2019
No Inspections of Dolls {12} Lots after the auction begins*

1049 8" BISQUE HEAD INCISED J D K 260, brown glass sleep eyes, O/M with teeth, mohair wig, toddler compo body

1050 8" BISQUE HEAD INCISED A1, blue glass eyes, C/M, compo body, PE (repair), (small fleck chip on left cheek)

1051 11 ½" BISQUE SHOULDER HEAD INCISED HEUBACH, 2/OD, blonde molded hair with top knot, intaglio eyes, O/M, cloth body with bisque arms, (finger damage), (legs detached at knees)

1052 11" SCHOENHUT GIRL, WALKER, painted eyes, mohair wig, (forehead chips)

1053 9 ½" BISQUE HEAD INCISED PARIS J (ANCHOR) V 2/0, Verlinque, brown glass eyes, O/M with teeth, mohair wig (glued down), compo body

1054 13" BISQUE SHOULDER HEAD HEUBACH BOY character doll, painted eyes, laughing mouth, blonde molded hair, cloth body with bisque arms

1055 7" BISQUE HEAD WINKER, INCISED HEUBACH 9141, blonde molded hair, compo body

1056 10 ½" BLONDE HAIR PARIAN SHOULDER HEAD, blue glass eyes, C/M, cloth body, bisque arms, copper luster boots

1057 9 ½" BIEDERMEIER CHINA SHOULDER HEAD, painted features blonde 6 stroke mohair wig, cloth body, china arms (right arm repair) & legs

1058 12 ½" BISQUE HEAD RED STAMP DEPOSE TETE JUMEAU Bte S. G. D. G., brown glass eyes, C/M, PE, Blue stamp Jumeau body, (professional repair to forehead & nose area) was originally purchased from Zelda Cushner, before it was dropped

1059 14" KATHE KRUSE, PAINTED FEATURES, early cloth body , wide hips

1060 16 ½" BISQUE SHOULDER HEAD BOY INCISED 160-5, brown glass eyes, molded hat, O/C mouth, cloth body with bisque hands

1061 10" BISQUE HEAD GOOGLY INCISED 950 PM , C/M, mohair wig, BJCB

1062 14 ½" BISQUE HEAD RED STAMP TETE BRU INCISED 227-0, painted blonde brush strokes hair, blue glass eyes, O/M, BJCB (left leg peeling)

1063 11 ½" BISQUE HEAD INCISED BRU JNER 3, brown glass eyes (tiny fleck corner left eye), C/M, PE, mohair wig (glued down), Compo body (index finger broken, thumb repair), early clothes

1064 12 ½" BISQUE HEAD INCISED DEP ELITE U.S. 1, UNCLE SAM Googly, watermelon smile, molded hat

1065 12 ½" BISQUE HEAD CHARACTER, K&H Germany 166-1, brown glass eyes, blonde painted hair, O/M, BJCB

1066 11 ½" BISQUE DOME HEAD INCISED SH2 950, blue glass eyes, C/M, mohair wig, cloth body with bisque arms, PE, original clothing

1067 5" ALL BISQUE GIRL, BLUE GLASS EYES, C/M, original dress, strap shoes

1068 5" ALL BISQUE BOY INCISED 307, blue glass eyes, C/M, mohair wig, original clothes, (tiny black spec on right cheek)

1069 10" BISQUE HEAD INCISED 1295 FS & C, brown glass sleep eyes, O/M with teeth, mohair wig, BJCB

1070 10 ½" STEIFF GIRL, MOHAIR WIG, blue glass eyes, (soiled & moth holes)

1071 14" KATHE KRUSE, jointed cloth body, (restorations to head)

1072 10" BISQUE HEAD GIBSON GIRL INCISED 172, brown sleep eyes, C/M, cloth body bisque arms & china legs, mohair wig

1073 LOT OF 2 – 9 ½" BISQUE HEAD INCISED AM 1894 BOY, brown & blue glass eyes, compo body painted boots, 9" Bisque head incised 39-18, painted eyes, C/M, compo body, mohair wig, painted shoes & socks

1074 FRENCH FOLDING MINIATURE SCHOOLHOUSE 18 ¾"L x 11"T labeled *Ecole*, 4 student desks, 8 bisque head students, & bisque automaton teacher that moves her hands (over-wound), classroom accessories

1075 20" KATHE KRUSE "TRAUMERCHEN" BABY, painted features, cloth body

1076 LOT OF 3 DOOR OF HOPE DOLLS, 12" man in blue jacket, 10 ¼" women in purple jacket, & 6 ½" child

1077 10 ½" BISQUE HEAD INCISED FG IN SCROLL on shoulder, blue glass eyes, C/M, PE, mohair wig, cloth body, clenched bisque hands

1078 LOT OF 2 DOLLS, 12" MASON & TAYLOR WOOD BODY, painted features, metal limbs (head repairs), & 15" Joel Ellis wood body, painted features metal limbs, (as is)

1079 6" BISQUE HEAD MAN DOLL riding a velocipede

1080 13" SCHLENKERCHEN, (SMILING), by Kathe Kruse, painted features and hair, (severe nose rub, wear), cloth body, (worn, soiled)



1065



1066



1067



1068



1069



1070



1071



1072



1073



1074



1075



1076



1077



1078



1079



1080

Withington Auction, Inc. Dolls at Auction - August 8 & 9, 2019
No Inspections of Dolls {15} Lots after the auction begins



1081



1082



1083



1084



1085



1086



1087



1088



1089



1090



1091



1092



1093



1094



1095



1096

*Withington Auction, Inc. Dolls at Auction - August 8 & 9, 2019
No Inspections of Dolls {16} Lots after the auction begins*

1081 7 ½” BISQUE HEAD INCISED K*R 114, painted eyes, C/M , mohair wig, BJCB, (glue around rim)

1082 LOT OF 2 – 8” BISQUE SHOULDER HEAD INCISED S&H 1160, brown glass eyes, C/M, mohair wig, cloth body with bisque arms & legs, & 7 ½” Parian, painted features, molded blonde hair, cloth body w/ bisque limbs

1083 LOT OF 8 ASSORTED KEWPIES, cat in lap, child in chair, two reading book, two hugging, small soldier, playing ukulele, prone, & head

1084 17” KATHE KRUSE CELLULOID, painted features, HH hair wig, red outfit

1085 14” LENCI BOY W/TAGS, ORIGINAL OUTFIT, from the Jane Withers Collection

1086 LOT OF 2 SWISS WOODEN DOLLS, 9 ½” boy, painted features, original outfit, 10” girl, painted features, original outfit, red ribbon

1087 LOT OF 2 MILLINERS MODELS, 9 ½” paper mache, painted features, wood body, (severe neck crazing), & 8 ½” p.m, painted features, wood body

1088 6 ½” BLACK GERMAN ALL BISQUE, toddler, glass eyes, C/M, straight leg

1089 7 ½” BISQUE HEAD INCISED SFBJ 60 PARIS, blue glass sleep eyes, O/CM, compo straight leg body, mohair wig (glued down)

1090 8” BISQUE HEAD INCISED JUST ME AM 310, blue glass sleeping eyes, C/M, mohair wig, straight leg compo body

1091 13” PARIAN SHOULDER HEAD WITH MOLDED HAT & blue ribbon, painted features, C/M, cloth body with bisque arms & legs, fancy molded hat

1092 11” SCHOENHUT BOY, intaglio eyes, original outfit

1093 14 ½” DEWEESE COCHRANE “CINDY”, latex, painted eyes, HH wig, (nose rub)

1094 14 ½” SCHOENHUT GIRL, PAINTED FEATURES, C/M, mohair wig, (nose chip)

1095 16” SCHOENHUT BOY, PAINTED FEATURES, mohair wig, sailor outfit

1096 14” SCHOENHUT, PAINTED FEATURES, molded hair (paint loss), no clothes

1097 12" BISQUE HEAD GOOGLY INCISED JDK 221, mohair wig, toddler compo body, (many repairs to head)

1098 18" KAMKINS BOY, painted features, molded face, cloth body, partial ink label back of head

1099 LOT OF 9 ASST. GERMAN WOOD CRÈCHE FIGURES, 8" – 9" & baby Jesus

1100 LOT OF 3 - 12" BISQUE HEAD GERMAN DOLLS, brown glass eyes, O/M, cloth bodies, dressed in original German outfits

1101 LOT OF 5 – 3 ½" BISQUE HEAD DOLLS in original outfits

1102 LOT OF 7 – 3" – 3 ½" BISQUE HEAD DOLLS in original outfits

1103 LOT OF 7 – SCHOENHUT CIRCUS FIGURES, (face wear) , (1 repaint)

1104 LOT OF 6 – 4" – 6" BISQUE HEAD DOLLS in original outfits

1105 LOT OF 5 – 6 ½" – 7 ½" GERMAN WOOD HEAD FIGURES in original outfits

1106 21" BISQUE HEAD INCISED 99 DEP GERMANY HANDWERCK, blue glass sleep eyes, O/M with teeth, PE, BJCB, mohair wig (pate glued down)

1107 38" BISQUE HEAD INCISED 79, brown glass eyes, O/M with teeth, HH wig (excess glue), (hairline at each ear, eyes reset), BJCB

1108 34" BISQUE HEAD INCISED SH GERMANY MAX HANDWERCK, brown glass eyes, O/M with teeth, BJCB

1109 24" BISQUE HEAD INCISED CIRCLE DOT BRU JNE 9, Brown glass eyes, C/M, PE, mohair wig, kid body (repairs), (head repairs), (replaced arms)

1110 26" BISQUE HEAD INCISED K*R SIMON HALBIG 115A, character baby, blue glass sleep eyes, O/CM, mohair wig, compo baby body (broken & missing finger)

1111 23" BISQUE LAUGHING CHARACTER INCISED 10 ½, blue glass sleep eyes, mohair wig, BJCB

1112 19" PAINTED BISQUE HELEN JENSEN "Gladdie"



1097



1098



1099



1100



1101



1102



1103



1104



1105



1106



1107



1108



1109



1110



1111



1112

*Withington Auction, Inc. Dolls at Auction - August 8 & 9, 2019
No Inspections of Dolls {19} Lots after the auction begins*



1113



1114



1115



1116



1117



1118



1119



1120



1121



1122



1123



1124



1125



1126



1127



1128

Withington Auction, Inc. Dolls at Auction - August 8 & 9, 2019
No Inspections of Dolls {20} Lots after the auction begins

1113 20" MARTHA THOMPSON QUEEN ELIZABETH, elaborate beaded & embroidered dress

1114 LOT OF 2 - 14" PATRICIA RYAN BROOKS NADA doll girl holding an apple, 1986, wood, cloth body, carved & painted legs, & 17" Patricia Ryan Brooks NADA "Dorothy" wood, cloth body, red slippers

1115 13 ½" BISQUE SOLID DOME FASHION, blue glass eyes, PE, CM, mohair wig, cloth body with bisque arms, early outfit & shoes, (neck socket rubs)

1116 10" GAIL WILSON IZANNAH WALKER made for Region 15 UFDC Convention 2011

1117 8 ½" ALL BISQUE "OUR FAIRY", blue glass eyes, OM with teeth

1118 11" BISQUE HEAD INCISED 231 FANY A2/0M, blue glass sleep eyes, CM, mohair wig, compo toddler body, blue & white knit outfit

1119 10 ½" HEUBACH BONNET BABY 7877, painted eyes, CM, compo body, (face rubs)

1120 LOT OF 2 – 9" BISQUE DOME HEAD 7602, painted eyes, CM, baby compo body, & 10" Bisque head incised DIP with Swain Green Stamp, blue glass sleep eyes, mohair wig, CM, baby compo body

1121 5 ½" ALL BISQUE, BLUE GLASS SLEEP EYES, CM, (left leg chip), 6" white china bathtub with 2 faucets

1122 6 ½" ALL BISQUE GOOGLY INCISED "BABY BUD", Germany 126, mohair wig, sleep eyes

1123 6 ½" BISQUE HEAD GOOGLY, painted eyes, incised AM 320, compo body with painted shoes (left foot damage)

1124 4" ALL BISQUE Hebee

1125 4 ½" ALL BISQUE GOOGLY, painted eyes, original outfit, mohair wig

1126 6" ALL BISQUE HORSEMAN TINY BABY, blue glass sleep eyes, CM, mohair wig

1127 7 ½" ALL BISQUE WITH KESTNER LABEL, blue glass sleep eyes, mohair wig, (upper back chip repair)

1128 11" COMPO BETTY BOOP, red heart tagged body by Fleischer Studios

1129 21" PRINCE PHILLIP BY MARTHA Thompson

1130 PAIR OF 15" COLONIAL/VICTORIAN LADIES, painted metal & plaster in original Victorian/Colonial dress (some leg damage), moveable arms

1131 10" PRINCESS ANN BY MARTHA Thompson

1132 11" PRINCE CHARLES BY MARTHA Thompson

1133 LOT OF 2 ARTIST DOLLS BY PAT RYAN BROOKS, 11" wood "Devon" holding a teddy bear, & 11" wood "Mariko" holding a doll

1134 17" JANE BRADBURY "FUTURE DOLL COLLECTOR" holding cloth doll & teddy bear, sculpted original, red hair

1135 13 ½" JANE BRADBURY "KATIE" artist doll, brown glass eyes, OM

1136 24" BISQUE HEAD INCISED VANTA BABY, blue glass sleep eyes, molded blonde hair, OM with teeth, compo body

1137 48" KATHE KRUSE MANNEQUIN, painted eyes, CM

1138 LOT OF 2 VOGUE GINNY DOLLS, Jill in original box, & pink outfit Ginny

1139 29" BISQUE HEAD INCISED S&H 1079, blue glass eyes (left eye iris roughness), OM with teeth, mohair wig, BJCB, (tape of forehead), PE

1140 35" BISQUE HEAD BOY INCISED A17M, blue glass eyes, OM with teeth, mohair wig, BJCB, black suit & shoes

1141 40" CHASE MANNEQUIN, painted features, used for hospital training

1142 LOT OF 6 PCS. DOLL FURNITURE, 8"T x 11"W mahogany inlaid Duncan Fyfe style table w/1 chair, 2 small ladder back chairs, wicker chair, & Windsor style chair

1143 LOT OF 2 ALL BISQUE DOLLS, 5" Bonnie Babe, blue glass eyes, OM with teeth, painted socks & shoes, & 6" Googly (392?) with replaced blue glass eyes, watermelon mouth, painted shoes & socks

1144 18" ROBERT J WRIGHT BOY WITH SAILBOAT, original tag



1129



1130



1131



1132



1133



1134



1135



1136



1137



1138



1139



1140



1141



1142



1143



1144

*Withington Auction, Inc. Dolls at Auction - August 8 & 9, 2019
No Inspections of Dolls {23} Lots after the auction begins*



1145



1146



1147



1148



1149



1150



1151



1152



1153



1154



1155



1156



1157



1158



1159



1160

*Withington Auction, Inc. Dolls at Auction - August 8 & 9, 2019
No Inspections of Dolls {24} Lots after the auction begins*

1145 20" WAX OVER COMPO ORIENTAL MOTSCHMANN, dark pupiless eyes, black HH, OM with teeth, taufling compo body

1146 14 ½" SHIRLEY ANTOON HURET artist doll, blue glass eyes, skin wig, PE, CM

1147 16" MARTHA THOMPSON SHOULDER HEAD ARTIST DOLL, painted features, black molded hair, PE, CM

1148 22 ½" BLONDE HAIR PARIAN, PAINTED FEATURES, CM, molded blonde hair, cloth body, kid arms, fancy bodice

1149 20" BISQUE SOLID DOME TURNED HEAD SHOULDER HEAD INCISED 639, blue glass eyes, mohair wig, CM, cloth body, kid arms,

1150 16" PARIAN S&H SHOULDER HEAD, molded blonde curly hair with ribbon, blue glass eyes, PE, CM, cloth body, bisque arms, early outfit

1151 LOT OF 2 – 12" PAPER MACHE SHOULDER HEAD, blue glass eyes, painted features, CM, mohair wig, cloth body & 16" Paper mache shoulder head, blue glass eyes, CM, mohair wig, cloth body

1152 14" ABG COPPER LUSTER PARIAN SHOULDER HEAD, molded snood & feather, cloth body, leather hands, "Empress Eugenie"

1153 20" PINK TINT CHINA, BLACK CENTER PART HAIR, painted features, CM, cloth body, leather hands, antique clothes (hair rubs)

1154 13" SHIRLEY ANTOON BRU artist doll, blue glass eyes, CM, PE, BJCB, 1985

1155 18" FRENCH FASHION F.G IN SCROLL, CM, PE, blue glass eyes, kid body, mohair wig, (eyes touched up in corners), early walking suit

1156 24" BISQUE HEAD INC. GERMANY QUEEN LOUISE, blue glass sleep eyes, OM mohair, BJCB, brown silk dress melting, (wig glued down, white spot on right check)

1157 24" BISQUE HEAD KESTNER INCISED K Made in Germany 14. blue glass sleep eyes, CM, mohair wig, BJCB, (fleck under right eye), beige silk outfit

1158 24" BISQUE HEAD INCISED 15, brown glass sleep eyes, OM with teeth, mohair wig, BJCB, velvet coat, (head should be restrung)

1159 23 ½" BISQUE HEAD RED LABEL DEPOSE TETE JUMEAU Bte S.G.D.G., blue glass eyes, CM, PE, French jointed compo body, mohair wig, antique outfit

1160 29" BISQUE HEAD F.G. IN SCROLL, blue glass eyes, OM with teeth, PE, mohair wig, BJCB, (hairline back of head at rim), needlepoint outfit

- 1161 27" BISQUE HEAD INCISED 109-15 DEP**, brown glass sleep eyes, OM with teeth, PE, mohair wig, BJCB, dressed in whites, (wig glued down)
- 1162 28" BISQUE HEAD K*R SIMON HALBIG 117N**, blue glass eyes, OM with teeth, HH wig, BJCB, (eye repairs to booth eyes, scratch on forehead)
- 1163 26" BISQUE HEAD KESTNER MADE IN GERMANY 146**, blue glass sleep eyes, OM with teeth, mohair wig, BJCB, plaster pate
- 1164 26" BISQUE HEAD RED LABEL DEPOSE TETE JUMEAU BTE S.G.D.G. 13**, blue glass eyes, CM, PE, French jointed compo body, mohair wig, pink outfit
- 1165 27" WAX OVER COMPO SHOULDER HEAD**, blue inset glass eyes, CM, cloth body, mohair wig
- 1166 27" BISQUE HEAD GERMANY 171**, blue glass sleep eyes, OM with teeth, mohair wig, BJCB, blue floral dress, (wig glued down)
- 1167 16" BISQUE HEAD SH 1039 DEP**, brown glass eyes, OM with teeth, PE, mohair wig, BJCB, antique shoes, right eye fleck
- 1168 LOT OF 6 SMALL ALL BISQUE DOLLS, 3 – 4 ½" KEWPIES, 1 – 4 ¾" Our Fairy** with label, 1 – 5" Bye-Lo, 1 – 5 ½" boy with painted features
- 1169 29" BISQUE HEAD INCISED GERMANY HEINRICH HANDWERCK SIMON & HALBIG**, blue glass sleep eyes, OM with teeth, PE, HH wig, BJCB
- 1170 31" BISQUE HEAD INCISED**, brown glass sleep eyes, OM with teeth, PE, HH wig, BJCB
- 1171 33" BISQUE HEAD WALKURE GERMANY**, brown glass sleep eyes, OM with teeth, PE, HH wig, BJCB
- 1172 24" BISQUE HEAD INCISED S&H 1249 DEP**, brown glass sleep eyes, OM with teeth, PE, HH wig, BJCB dressed in white, (left eye chip repair)
- 1173 21" BISQUE HEAD INCISED K*R SIMON & HALBIG 403 WALKER**, blue glass sleep eyes, OM w/teeth, PE, mohair wig, BJCB, (wig glued down, left eyelash missing)
- 1174 16" BISQUE HEAD MADE IN GERMANY 152**, brown glass sleep eyes, OM with teeth, mohair wig, BJCB, (wig glued down)
- 1175 LOT OF 2 – 15" BISQUE CHARACTER BABY JDK 211**, blue glass eyes, OM with teeth, (right eye fleck), 13" Bisque baby Heubach 300 Koppelsdorf, blue glass eyes, OM with teeth, mohair wig, compo baby body
- 1176 26" BISQUE HEAD INCISED KH4 GERMANY**, brown glass eyes, OM with teeth, HH wig, BJCB



1161



1162



1163



1164



1165



1166



1167



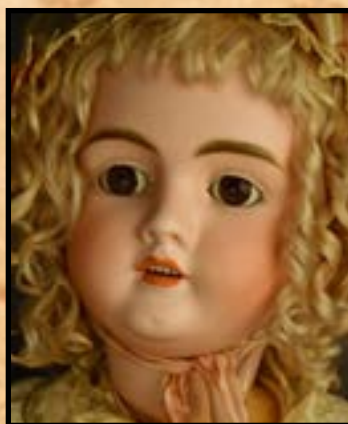
1168



1169



1170



1171



1172



1173



1174



1175



1176

Withington Auction, Inc. Dolls at Auction - August 8 & 9, 2019
No Inspections of Dolls {27} Lots after the auction begins



1177



1178



1179



1180



1181



1182



1183



1184



1185



1186



1187



1188



1189



1190



1191



1192

*Withington Auction, Inc. Dolls at Auction - August 8 & 9, 2019
No Inspections of Dolls {28} Lots after the auction begins*

- 1177 LOT OF 2 COMP SHIRLEY TEMPLES**, 1 – 15” all original compo marked Shirley Temple back of head (splattered eyes), & 26” all original compo marked Shirley Temple Ideal back of head
- 1178 27” BISQUE HEAD INCISED 14 GERMANY 99 DEP HANDWERCK**, brown glass sleep eyes, OM with teeth, PE, HH wig, BJCB, dressed in white
- 1179 35” BISQUE HEAD INCISED SH 1079 DEP 15**, brown glass sleep eyes, OM with teeth, mohair wig, BJCB, antique outfit
- 1180 25 ½” BISQUE HEAD INCISED SIMON HALBIG K*R**, brown glass sleep eyes, OM with teeth, PE, mohair wig, BJCB
- 1181 STICK & BALL WICKER DOLL CARRIAGE**, 40” L x 24”T, wood spoke wheels with metal rims, tufted original interior
- 1182 LOT OF 5 SMALL ALL BISQUE DOLLS 4 ½” – 6 ½”**, 4 – glass eyes, painted shoes & socks, mohair wigs, 1 – painted features, socks, & shoes
- 1183 LOT OF 2 – 11” BISQUE SOLID HEAD AM 300**, painted features, blonde molded hair, CM, BJCB, & 13” Bisque solid head 6894 Germany 3, blonde molded hair, painted features, CM, BJCB, both dressed in blue stripes
- 1184 9 ½” BISQUE HEAD INCISED SFBJ 301 PARIS 2/0**, blue glass eyes, OM with teeth, BJCB, floral & black outfit
- 1185 LOT OF 5 CHINA HEAD DOLLS 6 ½” – 14” 4** – black hair low brow’s, painted features, cloth bodies, & 1 – Black hair with snood, cloth body, leather arms
- 1186 LOT OF 6 ALL BISQUE DOLLS, 3 ¾” – 7”**, 1 – 7” Rosie O’neil Kewpie, 5 – all bisque with painted features, shoes & socks
- 1187 LOT OF 4 SMALL ALL BISQUE DOLLS 6” – 8”**, 3 brown, 1 blue glass eyes, mohair wigs, 2 – CM, 2 – OM, early outfits
- 1188 19” BISQUE HEAD DEP 154 9**, brown glass sleep eyes, OM with teeth, cloth body with bisque arms, plaster pate, no wig
- 1189 LOT OF 3 BLONDE HAIR PARIANS**, 14” blue glass eyes, black ribbon in hair, cloth body with bisque arms, (repairs to left lower cheek), 12” parian shoulder head painted features, CM, cloth body, bisque arms early blue outfit, 11” shoulder head, blue glass eyes, CM, cloth body, bisque arms, (repairs to shoulder)
- 1190 LOT OF SEVEN STEIFF ANIMALS**, 2 – 7” Gray elephants, 2 – 12” Teddy Bears, 2 – 8” Teddy Bears, 1 – 3” Teddy Bear
- 1191 LOT OF TWO STEIFF TEDDY BEARS**, 1 – 15” hump back mohair bear, & 22” golden bear
- 1192 LOT OF 2 – JOEL ELLIS BLUE PAINT DECORATED** & stencil cradle with blue stamp Pat June 11, 1872 on bottom, & Joel Ellis blue paint decorated & stencil carriage, along with assorted quilts

1193 LOT OF NINE PAIR OF ANTIQUE doll shoes

1194 LOT OF NINE PAIR OF ANTIQUE doll shoes

1195 LOT OF ELEVEN PAIR OF ANTIQUE doll shoes

1196 LOT OF 10 PAIR OF ANTIQUE doll shoes

1197 LOT OF NINE PAIR OF ANTIQUE doll shoes

1198 LOT OF SIX PAIR OF FRENCH doll shoes

1199 33" BLACK HAIR CHINA SHOULDER HEAD, center part, painted features, replaced leather arms, cloth body, antique shoes

1200 8" BISQUE HEAD INCISED 94 6/0, brown glass eyes, open mouth with teeth, mohair wig, straight leg compo body

1201 22" BLACK HAIR CHINA SHOULDER HEAD, brown painted eyes, cloth body, bisque arms & legs (legs are replaced), blue antique outfit

1202 19" BLONDE HAIR CHINA, blue painted eyes, cloth body, china arms, green velvet suit

1203 20" BLACK HAIR CHINA, BLUE EYES, painted features, cloth body, china limbs

1204 21" BISQUE HEAD INCISED S&H 1009 DEP, brown glass eyes, PE, O/M with teeth, mohair wig, BJCB (manufacture line behind right ear)

1205 24" BISQUE HEAD INCISED WALKURE GERMANY. Blue glass sleep eyes, PE, OM with teeth, mohair wig, BJCB, black outfit

1206 23" BISQUE HEAD INCISED S&H 1079 DEP GERMANY 11, blue glass sleep eyes, PE, OM with teeth, mohair wig, BJCB, no clothes, wear to body

1207 21" BISQUE HEAD INCISED MADE IN GERMANY 171, brown glass sleep eyes, OM with teeth, mohair wig, BJCB, white dress

1208 18" PARIAN, MOLDED BLONDE HAIR WITH RIBBON, BLUE GLASS EYES, PE, CM, cloth body with leather arms, blue dress (2 head nicks on top of head)



1193



1194



1195



1196



1197



1198



1199



1200



1201



1202



1203



1204



1205



1206



1207



1208

*Withington Auction, Inc. Dolls at Auction - August 8 & 9, 2019
No Inspections of Dolls {31} Lots after the auction begins*



1209



1210



1211



1212



1213



1214



1215



1216



1217



1218



1219



1220



1221



1222



1223



1224

*Withington Auction, Inc. Dolls at Auction - August 8 & 9, 2019
No Inspections of Dolls {32} Lots after the auction begins*

- 1209 16" BISQUE HEAD FRENCH FASHION INCISED 4**, blue glass eyes, early mohair wig, PE, CM, kid body, early red walking outfit with antique shoes, (pate glued down)
- 1210 13" BISQUE DOME HEAD INCISED 5**, blue glass eyes, PE, CM, mohair wig, straight wrist compo body, early red outfit (faded), (lg. piece missing from dome head)
- 1211 14" SCHOENHUT GIRL, MOHAIR WIG**, painted features, spring jointed body, (facial crazing), red dress
- 1212 20" KESTNER SHOULDER HEAD INCISED 8 MADE IN GERMANY**, brown glass eyes, OCM, mohair wig, kid body, bisque hands, white dress, (pate plastered), (paint loss left eyebrow)
- 1213 23" BISQUE HEAD INCISED MADE IN GERMANY 146**, brown glass sleep eyes, mohair wig, open mouth with teeth, BCJB, brown suit with parasol
- 1214 13" IRON WHEEL PULL TOY WITH 10" BISQUE HEAD DOLL** with wire armature body, mounted goat the moves back & forth when toy is pulled, worn condition
- 1215 LARGE 10" COVERED CARDBOARD EGG IN 2 SECTIONS** with 2 – 7 ½" bisque head dolls, (both dolls have some damage)
- 1216 LOT OF 3 BISQUE HEAD DOLLS**, 8 ½" incised Made in Germany 201 brown glass eyes, OM with teeth, BJCB (no wig or clothing), 8 ½" incised 7247 Germany, brown glass eyes, CM, (no wig or clothes, replaced body), & 8 ½" blue glass sleep eyes, OM with teeth, BJCB, (no wig or clothes)
- 1217 19" BISQUE HEAD POUTY KESTNER INCISED 13**, blue glass eyes (fixed sleep eyes), CM, mohair wig (no pate), BJCB, no dress
- 1218 LOT OF 2 BISQUE HEAD DOLLS INCISED 174**, 9", brown glass sleep eyes, OM with teeth, BJCB, (no wig or pate), & 15" brown glass sleep eyes, OM with teeth, BJCB, mohair wig, (no clothes)
- 1219 17" BISQUE HEAD INCISED S&H 1279 DEP GERMANY**, blue glass eyes, PE, OM with teeth, mohair wig, BJCB, (repairs to neck)
- 1220 LOT OF 2 – 9 ½" T BLISS LITHO PAPER COVERED 2 STORY DOLL HOUSE** (missing chimney, & 7" L Marklin white canopy carriage with repairs & small bisque baby doll)
- 1221 7" BISQUE DOME HEAD INCISED X 1/0**, brown glass eyes, CM, mohair wig, BJCB, with 11" doll trunk and assorted outfits
- 1222 10" BISQUE SHOULDER HEAD INCISED** Made in Germany, blue glass sleep eyes, CM, mohair wig, cloth body with bisque arms, & 10" doll trunk with outfit
- 1223 LOT OF 4 ANTIQUE DOLL** outfits
- 1224 15" BISQUE HEAD KESTNER INCISED 7**, brown glass eyes, PE, OCM, BJCB, (hairline back of head, (no wig), orange outfit)

***** The End of Day 1 Picture Dolls *****

*Withington Auction, Inc. - August 8 & 9, 2019
There will be no Inspections of dolls / Lots after the auction begins.*

*** NOTES ***

**The End of Day 1 - Picture Dolls
... time for the Non-Picture dolls.**

**Don't forget the Evening Preview for the August 9th Doll Auction
will be in the Ballroom tonight from 7:00 - 9:00**

*Withington Auction, Inc. - August 8 & 9, 2019
There will be no Inspections of dolls / Lots after the auction begins.*

*** Day 1 Non-Picture Dolls ***

- 1225 LOT OF 2 – 9” BLONDE HAIR PARIAN S/H**, painted features, silk dress, cloth body & 12” molded bonnet top hat, painted features, cloth body, early outfit
- 1226 LOT OF 2 – 18” BISQUE HEAD KAISER BABY**, blue eyes, open mouth, compo body with cracking arms, & 10 ½” bisque head Gerbruder laughing boy in velvet suit
- 1227 LOT OF 2 – 17” BISQUE HEAD inc.** 1897, blue glass eyes, open mouth, mohair wig, kid body, & 20” Bisque head inc. AM 390, brown eyes, open mouth, BJCB, (needs stringing)
- 1228 LOT OF 2 – 15” Bisque head AM 370**, blue eyes, open mouth, BJCB, & 15 ½” Floradora, brown eyes, open mouth, kid body
- 1229 LOT OF 2 – 11” Bisque head baby**, blue sleep eyes, open mouth with teeth, baby compo body (needs stringing), & 15” Bisque head incised 167, brown sleep eyes, open mouth, BJCB
- 1230 LOT OF 2 – 15 ½” inc. F.S. & C. 1310**, flirty eyes, O/M, BJCB (needs stringing), & 15 ½” Bisque head Heubach Kopplesdorf 300, blue sleep eyes, open mouth, compo toddler body
- 1231 LOT OF 2 – 9 ½” Bisque head inc. SFBJ Paris**, painted features, O/C mouth, mohair, 5pc. compo body (needs stringing), & 10” Bisque head baby inc. PM 914 sleep eyes, O/M, compo baby body, mohair wig
- 1232 LOT OF 2 – 17” Bisque turned S/H**, blue eyes, O/M, mohair wig, kid body, & 20” Bisque turned S/H Kestner, blue eyes, closed mouth, mohair wig, kid body (leaking)
- 1233 LOT OF 2 – 20” Bisque head character baby inc. 152**, blue sleep eyes, O/M, mohair wig, compo baby body, & 24” Bisque head inc. Germany G. B., brown sleep eyes, O/M, teeth, mohair wig, BJCB (needs stringing)
- 1234 11 ½” BISQUE HEAD INC. K*R 114**, blue ptd. eyes, C/M, (no wig, BJCB (repaint legs)
- 1235 LOT OF 2 – 18” HARD PLASTIC BABY**, sleep eyes, closed mouth, cloth body & 14” molded cloth Spanish lady, original clothes
- 1236 LOT OF 3 – 12” Bisque head inc. Ruth**, blue glass eyes, O/M, kid body w/ bisque arms, mohair, 17” bisque head baby inc. B P 585, sleep eyes, O/M, compo baby body, & 24” bisque inc. Max Handwerck Germany, sleep eyes, O/M, BJCB, (dirty)
- 1237 LOT OF 2 – 23” Bisque head inc. S&H 1009** blue glass sleep eyes, O/M, teeth, kid body, bisque arms, mohair, PE, (animal damage), & 18” Bisque head inc. *Daisy*, blue sleep eyes, open mouth with teeth, kid body with bisque arms (animal damage)
- 1238 LOT OF 2 – 16” pink tint black hair china**, (Sophia Smith), brown painted eyes, kid body, early outfit, (back of shoulder plate repaired), & 10” black haired china, blue painted eyes, cloth body, painted shoes & socks
- 1239 23” BISQUE HEAD INCISED MADE IN GERMANY 171**, blue sleep eyes, open mouth with teeth, mohair wig, BJCB, plaster pate glued down
- 1240 LOT OF 2 – 18” bisque head incised 370**, brown eyes, open mouth with teeth, mohair wig, cloth body, & 18” bisque head incised 7/0 10 Germany Handwerck, blue eyes, open mouth, mohair wig, pierced ears, BJCB
- 1241 LOT OF 2 – 9 ½” Bisque head character baby incised JDK**, blue eyes, open mouth with teeth, ball jointed baby body, painted hair, & 13” bisque shoulder head incised Germany 20/0, brown eyes, open mouth with teeth, mohair wig, cloth body with bisque hands
- 1242 LOT OF 2 – 13” Bisque head incised 370**, blue eyes, open mouth with teeth, mohair wig, cloth body with bisque arms, & 15” blonde hair china, blue painted eyes, cloth body, curly sculpted hair, painted boots (right foot broken)
- 1243 LOT OF 2 – 18” Bisque head incised Germany 152**, brown sleep eyes, open mouth with teeth, mohair wig, BJCB, & 19” bisque head incised Made in Germany 167, brown sleep eyes, open mouth with teeth, mohair wig, BJCB
- 1244 LOT OF 2 – 15” Bisque head incised 11/6**, brown glass eyes, open mouth, mohair wig, BJCB, & 11” Bisque shoulder head, brown glass eyes, open mouth with teeth, kid body with bisque arms, mohair wig

1245 LOT OF 2 – 21” Bisque head incised Simon Halbig Heinrich Handwerck, blue sleep eyes, open mouth with teeth, mohair wig, pierced ears, BJCB, & 28” Bisque head incised Germany, S*H 914, brown glass eyes, open mouth with teeth, human hair wig, BJCB

1246 THREE SETS OF DOLL TEA SETS, blue willow & ironstone (as is)

1247 LOT OF 5 - 12 ½” paper covered dolls trunk with clothing, 12” doll cradle with mattress, Little Black Sambo child’s book with 2 small cloth dolls

1248 9” FROZEN CHARLOTTE (in manufacture nick on right heel)

1249 14” QUEEN ANNE brown pupil less glass eyes, jointed wood body, kid arms, mohair wig, (face cracking badly)

1250 15” CELLULOID KATHE KRUSE BOY in lederhosen

1251 20” KATHE KRUSE TODDLER, cloth molded face, painted features, mohair wig

1252 24” PAPER MACHE GREINER shoulder head, 1858 label, cloth body, (nose & face rubs)

1253 23” CHINA SHOULDER HEAD, newer kid body, restorations to head, purple outfit, with early green chair

1254 15” GOLLIWOG, DEAN’S RAG CO., from the Zelda Cushner Collection

1255 LOT OF 2 – 11” LENCI GIRL, original tag, blonde hair, gingham dress, & 14” composition shoulder head, painted features, string hair, Dutch boy, Madame Hendren label by Grace Corp

1256 LOT OF 2 – 10” BISQUE SHOULDER HEAD BOY incised Germany 30, American School Boy, & 12” Bisque shoulder head, incised AM 500, (replaced shoulder plate) character boy, C/M brown wool suit

1257 LOT OF 2 – 8 ½” Bisque head incised AM 990, blue glass eyes, O/M with teeth, mohair wig, compo body, & 8” Bisque head incised RXX, character girl, blue glass eyes, C/M, BJCB

1258 LOT OF 2 – 7” Bisque head incised Made in Germany 12/0, brown glass eyes, O/M, mohair wig, straight leg compo body, & 7” Bisque head incised AM 1894, brown glass eyes, O/M, mohair wig, straight leg compo body

1259 LOT OF 2 – 7” Bisque head incised 1078 Simon Halbig, brown glass sleep eyes, O/M, mohair wig, straight leg compo body, & 8” All bisque, blue glass sleep eyes, O/M, mohair wig, painted shoes & socks

1260 LOT OF 2 – 11” Yes/No monkey & 4 ½” mechanical mohair bear

1261 LOT OF 2 – 7” Bisque head, blue glass eyes, O/M, mohair wig, jointed wood body, & 8” All bisque, brown glass sleep eyes, C/M, painted shoes & socks

1262 LOT OF 2 - 8” All bisque doll house dolls, blue glass eyes, mohair wigs, painted shoes

1263 LOT OF 2 CHARACTER BOYS, 8 ½” Heubach boy, blonde molded hair, painted eyes, BJCB, & 7” Heubach boy, blonde molded hair, toddler body (repairs)

1264 LOT OF 2 – 12” Bisque shoulder head, incised Heubach 7850, painted eyes, molded hair with ribbon, kid body with bisque arms, “Coquette”, & 11” bisque shoulder head, molded hair, blue painted eyes, cloth body with bisque hands, Scottish outfit

- 1265 11 ½" BISQUE HEAD INCISED K*R 114**, C/M, blue painted eyes, mohair wig, BJCB, (heavy restorations to head)
- 1266 LOT OF 2 – 14" Bisque head character boy inc. 7**, painted features, O/M, toddler compo body, & **5 ½" Bisque head Heubach baby**, compo baby body (as is)
- 1267 LOT OF 3 – 4"- 6" MIBS**
- 1268 LOT OF 2 – 6" Bisque head Halbig K*R**, blue glass sleep eyes, O/M, mohair wig, straight leg compo body, & **5 ½" incised K*R Simon Halbig 126**, brown glass sleep eyes, O/M, mohair wig, baby compo body
- 1269 15" MARY HOYER COMPO**, red knit outfit with skates
- 1270 LOT OF 6 SNOW BABIES**, 1" – 3"
- 1271 LOT OF 2 – Swiss wooden dolls**, 8 ½", & 7 ½" in original costumes
- 1272 LOT OF 2 – 7 ½" Bisque head incised Heubach 8778 Germany**, blue in-taglio eyes, O/M, mohair wig, straight leg compo body, painted shoes & socks, & **8" Bisque head S&H**, blue glass eyes, O/M, mohair wig, straight leg compo body, painted shoes & socks
- 1273 LOT OF 2 – Swiss woodens**, 11 ½" & 10 ½" in original outfits, 1 w/ tag
- 1274 9" T GIRL PIANO BABY**, marked Germany, seated
- 1275 10" HEUBACH FIGURINE** of a Dutch girl seated
- 1276 20" BISQUE HEAD INCISED K*R Simon Halbig 121**, blue glass sleep eyes, O/M with teeth, baby compo body, mohair wig
- 1277 25" BISQUE HEAD INCISED JDK 257**, blue glass sleep eyes, O/M with teeth, mohair wig, replaced compo body
- 1278 LOT OF 2 – 23" Bisque head incised AM 1894**, blue glass eyes, O/M with teeth, mohair wig, BJCB (repairs), & **23" Bisque head incised AM 390**, brown glass sleep, O/M, mohair wig, BJCB (broken finger left hand)
- 1279 17" BISQUE HEAD BABY incised Georgine Averill "Bonnie Baby"**, brown glass eyes, O/M w/tongue, painted blonde hair, cloth body
- 1280 13 ½" BISQUE HEAD BABY INCISED JDK 1070**, brown glass sleep eyes, O/M with teeth, blonde painted hair, compo baby body
- 1281 40" BISQUE HEAD INCISED A16M**, brown glass sleep eyes, O/M with teeth, mohair wig, BJCB, (head crack & repair)
- 1282 LOT OF 3 – 5 ½" All bisque**, painted features, painted shoes & socks, **12" Bisque shoulder head**, painted features, bisque arms & legs (left foot is, missing), & **12" Bisque shoulder head**, painted features, cloth body, bisque arms & legs
- 1283 28" CHASE, WEIGHTED**, painted features (some repaint)
- 1284 18" KATHE KRUSE**, original tag, cloth body

1285 12" BLACK PTD. BISQUE, brown glass sleep eyes, O/M, teeth, mohair wig, BJCB

1286 LOT OF 3 BABY DOLLS, 11" AM baby, cloth body, 8" German KB compo baby body, & 16" Grace S Putnam cloth body (as is)

1287 LOT OF 2 BISQUE HEAD baby dolls, 14" Grace S Putnam, & 11" Baby Phyllis

1288 LOT OF 3 – Composition & vinyl dolls, Tiny Tears, McGuffay Ana, & black vinyl

1289 25" BISQUE HEAD KESTNER171, brown glass sleep eyes, OM with teeth, BJCB

1290 LOT OF 2 – 12" BISQUE HEAD AM 971 character baby, blue glass eyes, OM with teeth, compo baby body, & 12" Bisque head incised 199 baby, blue glass eyes, OM with teeth, compo baby body

1291 LOT OF 2 – 11" SASHA, & 13" Diane Dengle Bunky Baby

1292 LOT OF 2 10" KATHE KRUSE, boy & girl

1293 14" LENCI FELT, painted features, (soiled, moth holes)

1294 21" BISQUE HEAD JDK BABY, blue glass sleep eyes, O/M with teeth, baby compo body

1295 LOT OF 2 – 11 ½" artist dolls, bisque heads, cloth bodies, felt legs, bisque arms

1296 11" SCHOENHUT, painted features, (rough body)

1297 12 ½" COMPO W/ GLASS INSET EYES, CM, jointed compo/wood body, dress melting

1298 LOT OF 3 – 7 ½" BUCHIERER BECCASINE Nanny, 2 small bisque head dolls in original outfits

1299 LOT OF 5 BETTY CURTIS artist dolls, 8 ½" – 11"

1300 LOT OF 2 – 10" Kathe Kruse, brother & sister, painted features

1301 12" GLASS EYED PARIAN SHOULDER HEAD BOY, cloth body worn outfit

1302 23" BISQUE HEAD INCISED A W SPECIAL Germany, blue glass sleep eyes, OM, mohair wig, BJCB

1303 16" BISQUE HEAD BABY HEUBACH 300 4, blue glass eyes, OM with teeth, baby compo body

1304 LOT OF 2 - 8" AM DEP 8 BISQUE HEAD TWINS, 1 brown, 1 blue glass eyes, OM with teeth, mohair wig, straight leg compo bodies, painted shoes & socks

- 1305 LOT OF 2 – 14” Bisque shoulder head incised 1894, blue glass eyes, OM with teeth, mohair wig, kid body, & 16 ½” Bisque shoulder head boy, blue glass eyes, OM with teeth, kid body, mohair wig**
- 1306 12 ½” BISQUE SHOULDER HEAD BOY**, blonde molded hair, brown glass eyes, CM, kid body w/bisque arms,
- 1307 LOT OF 2 – 4 ¼” Bonnet head Frozen Charlotte, & 18” Black hair china, painted features, cloth body, blue silk dress**
- 1308 LOT OF 2 – 15” Bisque head “Albert” by Virginia Atelier & 13” Bisque head “Victoria” by Virginia Atelier**
- 1309 LOT OF 4 – BYELO BABIES, 3” – 9” in antique cradle**
- 1310 38” PATTI PLAYPAL “Peter”, vinyl**
- 1311 34” PATTI PLAYPAL “Shirley Temple - Heidi”, vinyl**
- 1312 38” PATTI PLAYPAL “Peter”, vinyl**
- 1313 28” PATTI FAM “LITTLE SISTER” loose)pink knitted outfit, (needs restringing)**
- 1314 LOT OF 2: 13” Felt artist dolls by Madeline Saucier, Switzerland & drum soldier.**
- 1315 18” MADAME ALEXANDER Debutant Queen, hard plastic in original dress**
- 1316 12” SCOOTLES COMPO, painted features, (some body crazing)**
- 1317 LOT OF 6 – BISQUE HEAD DOLLS 5” – 7”, 1 - all bisque, 4 – compo bodies, 1 – cloth body**
- 1318 LOT OF 18 LITHO ALPHABET/NUMBER/picture blocks in container**
- 1319 16” BISQUE HEAD INCISED 129, Kestner, brown glass eyes, OM with teeth, mohair wig, BJCB**
- 1320 LOT OF 3 – RAVCA’S, 2 – 13”man & woman, 1 – 8” man, original outfits**
- 1321 20” BISQUE SHOULDER HEAD SCHOOLBOY**, molded blonde hair, brown glass eyes, CM, kid body with bisque hands
- 1322 18” CHAD VALLEY PRINCESS ELIZABETH**, felt, blue glass eyes, painted features
- 1323 LOT OF 2 – 16” Jane Bradbury boy artist doll, & 12” Crying Boy by Ellory Thorpe, artist doll**
- 1324 VIOLIN PLAYER AND LADY dancing artist dolls**

- 1325 LOT OF 3 – 9 ½” SWISS WOODEN GIRL**, 8 ½” wood Googly, & 10” Pat Ryan Brooks girl holding a teddy bear
- 1326 36” PATTI PLAYPAL**, red hair, vinyl
- 1327 34” BLACK PATTI PLAYPAL**, vinyl
- 1328 34” PATTI PLAYPAL**, blonde hair, vinyl
- 1329 LOT OF 2 - 20” IDEAL SHIRLEY TEMPLE** with button & 2 outfits, (splattered eyes), compo, & 15” Madame Alexander Sonja Heini compo
- 1330 4 – 5” ALL BISQUE FIGURES**, Chubby, Baby Bud, & 2 others
- 1331 LOT OF 2 - 11” ARTIST DOLLS**, Franklin Pierce by Ruth Bartlome, & Jane Appleton Pierce by Ruth Bartlome for 20th anniversary GSDC
- 1332 LOT OF 2 ARTIST DOLLS**, 11 ½” Charlie Chaplin, & 9 ½” The Kid, by Gwen Flather 1973 NIADA artist, Zelda Cushner Collection
- 1333 7” BISQUE HEUBACH 9143 GOOGLY**, molded hair w/ top knot, OM, compo body
- 1334 LOT OF 2 COMPOS** 14” Whistling Dan painted features, & 12” Flexy Soldier, both (as is)
- 1335 LOT OF 3 – COMPO DOLLS**, 12” roller skater, 12” molded ponytail, & 12” Sparky?
- 1336 LOT OF 2 – COMPO DOLLS**. 12” Key wind walker & 13” Shriner Convention doll
- 1337 LOT OF 2 – 25” PAPER MACHE** shoulder head, brown glass eyes, CM, dome head, cloth body (wear to face, hole in head), 9 ½” early composition “motschmann type”, brown glass eyes, swivel neck, taufling body
- 1338 34” PATTI PLAYPAL**, boy, molded hair
- 1339 LOT OF 4 – Liberty of London dolls**
- 1340 LOT OF 3 – Pearly dolls – Peggy Nesbitt**
- 1341 LIBERTY OF LONDON**, old lady, 8 ½”, Zelda Cushner Collection
- 1342 LOT OF 5 – Assorted bisque head dolls**, 4” – 7”
- 1343 LOT OF 3 MUSICIAN** doll house dolls
- 1344 LOT OF 4 – MADAME ALEXANDER & Vogue dolls**

1345 LOT OF 5 – All bisque dolls 4 ½” – 6”

1346 LOT OF 5 ARTIST DOLLS, 2 - portrait doll by Lewis Sorensen, & “Michael” by Phyllis Wright, Zelda Cushner Collection

1347 LOT OF 4 GOOGLIES, 3 bisque head 6” – 7”, painted features, 1 compo “Margie”

1348 LOT OF 5 SMALL BABY DOLLS – Bisque K*R 100, 6 ½” JDK, 8” Amberg, & 2 small German babies

1349 LOT OF 4 – ARTIST DOLLS, 2 – Helen Kish, 1 – Leeann, 1 – Bastien, 7 ½” – 10”

1350 LOT OF 4 – BABIES, 8 ½” Hertel & Schwab character, 9 ½” AM 251, 6 ½”

bisque Japan, & 5 ½” compo Baby Sandy

1351 LOT OF 6 ASSORTED DOLLS, Norma Mellen “Edward”, 8 ½” all felt, 12” wood cymbal player, 14” Alpha Toys felt, 4” all bisque, & small sheep

1352 LOT OF 3 MODERN DOLLS, Francis Ravca black doll, 12 ½” all wax lady, & 12 ½” cloth Buster Brown

1353 LOT OF 5 ASSORTED MODERN DOLLS, 8 ½” all wood, Madame Alexander Flapper, Madame Alexander Austria boy, Hummel, plastic baby,

1354 LOT OF 3 MODERN DOLLS, 12” Little Annie Rooney (hair crazing), cloth Little Lulu, & knitted Golliwog

1355 LOT OF 4 DOLLS, 16” AM 1894, 8” Japanese Shirley Temple, 8 ½” Heubach boy 7620, & 11” B G Lamone

1356 LOT OF 4 ARTIST DOLLS, 5” – 7”, 3 Jane Bradbury, 1 – Oriental doll

1357 LOT OF 3 – 10” T FABRIC covered miniature cabinet, 6 ¾” European scene shadow box, & picture frame mounted oriental snuff bottle

1358 LOT OF ANTIQUE CHILDREN’S CLOTHES & pair of pink shoes

1359 2 CLOTH PHOTO FACE DOLLS, 24” & 25” in vintage clothing

1360 22” PAPER MACHE S/H, brown glass eyes, cloth body, HH wig, (as is)

1361 LOT OF 2 WAX DOLLS, 23” wax shoulder head, blue glass eyes, kid arms, wood legs, early outfit (as is), & 28” wax shoulder head, blue glass sleep eyes, cloth body, leather arms, early outfit (as is)

1362 30” BISQUE SHOULDER HEAD INCISED H, blue glass sleep eyes, OM with teeth, synthetic wig, kid body

1363 26” BLACK HAired CHINA, center part, painted features, CM, cloth body, antique clothes

1364 16” EMMA CLEAR black haired china

1365 25" BISQUE DOME SHOULDER HEAD. Blue glass eyes, CM, mohair wig, cloth body, bisque arms, head cracks

1366 15" BRU ARTIST DOLL, brown glass eyes, PE, CM, mohair wig, BJCB

1367 LOT OF 2 – 23" White glazed porcelain, Painted features, PE, cloth body, china arms, early outfit, & 21" blonde Parian boy, painted features, cloth body, early outfit

1368 16" BISQUE INC. 109 Handwerck, blue glass sleep eyes, OM,teeth, PE, BJCB

1369 LOT OF 2 – 15" Bisque head incised Handwerck, brown glass sleep eyes, OM with teeth, BJCB, & 15" Bisque head Mabel, blue glass eyes, OM with teeth, kid body

1370 LOT OF 2 GIBSON GIRL TYPE artist dolls, 15" blue glass eyes, CM, purple outfit, 14" painted features, H Schwig artist,

1371 LOT OF 2 ARTIST DOLLS, 11 ½" UFDC "Baby Stewart" & 18" molded Parian type

1372 17" SHOULDER HEAD PARIAN (repaired shoulder), blonde molded hair, painted features, PE, CM, cloth body, bisque arms, early outfit

1373 16" EMMA CLEAR ARTIST DOLL, black center part hair, painted features

1374 15 ½" EMMA CLEAR DOLL, molded blonde hair, painted features, CM, blue silk dress

1375 21" BONNET HEAD ARTIST BLUE SCARF LADY, blue glass eyes, molded blonde hair, cloth

1376 LOT OF 2 ARTIST DOLLS, 15" Bisque shoulder head, 1987 DAG, blue glass eyes, CM, cloth body, mohair wig, & 19" Bisque shoulder head, blue glass eyes, OM with teeth, old kid body, mohair wig

1377 18" EMMA CLEAR shoulder head artist doll, blonde molded hair with flower, blue glass eyes, CM, PE, corset

1378 16" 1964 FR. FASHION artist doll, swivel neck, blue glass eyes, CM, PE, kid bod

1379 LOT OF 2 – 15" Parian shoulder head, molded hair with ribbon, painted features, cloth body, shoulder plate repairs, & 15" Blonde hair Parian shoulder head, blue glass eyes, CM, PE, cloth body, restorations

1380 20" MOLDED BONNET S/H, Artist doll, painted features, cloth body, bisque hands

1381 LOT OF 2 LOW BROW CHINAS – 20" black hair, painted features, cloth body, china arms & legs, & 18" black hair, painted features, new leather body

1382 22" BISQUE HEAD INCISED 109 H, brown glass eyes, mohair wig, OM with teeth, BJCB

1383 19" PETE SMITH TENN, Parian shoulder head, painted features, PE, cloth body, bisque arms & legs

1384 LOT OF 2 – EMMA CLEAR ARTIST DOLLS, 19" brown hair china, painted features, cloth body, CM, china limbs & 15 ½" blonde Parian boy, painted features, CM cloth

1385 20" BRU FASHION ARTIST DOLL BY CALI, blue glass eyes, HH wig, CM. PE, kid body

1386 22" BISQUE HEAD INC. 109, brown glass eyes, mohair wig, OM with teeth, BJCB, PE

1387 20" GEORGE & MARTHA WASHINGTON Artist dolls, molded hair, painted features, cloth body, period dress, 1990

1388 2 – BLACK HAIR LOW BROW CHINAS, 20", painted features, cloth body, leather hands, period dress, & 13" painted features "Dorothy", cloth body, china hands & feet

1389 14 ½" BISQUE SHOULDER HEAD CHARACTER BOY, Germany, blue intaglio eyes, OM, cloth body, (crack in shoulder plate)

1390 17" BLONDE HAIR CHINA BOY, painted features, cloth body, china arms, (shoulder plate repair)

1391 24" BISQUE HEAD INC. 71, blue glass eyes, OM with teeth, mohair wig, BJCB, blue check outfit

1392 16" BISQUE ARTIST DOLL, 1907 R/A DEP, blue glass eyes, mohair wig, CM, PE, BJCB, French dress

1393 19" BISQUE HEAD INCISED PS 154, brown sleep eyes, OM with teeth, mohair wig, kid body with bisque arms

1394 2 BABY DOLLS, 13" Bisque Grace S Putnam, blue glass sleep eyes, cloth body, & 10" Bisque 152 baby, blue glass sleep eyes, baby compo body, (needs stringing)

1395 23" BISQUE QUEEN LOUISE, blue glass sleep eyes, OM teeth, mohair wig, BJCB

1396 23" EMMA CLEAR CHINA ARTIST DOLL, black spill curls, painted features, CM, PE, cloth body, china hands & feet

1397 19" BISQUE BRU ARTIST DOLL, blue glass eyes, CM, PE, mohair wig, kid body

1398 LOT OF 2 – 22" AM 390, brown glass sleep eyes, OM with teeth, mohair wig, BJCB, & 22" AM Floradora, blue glass eyes, OM with teeth, mohair wig, BJCB

1399 21" BISQUE HEAD "PANSY" brown gl. eyes, OM with teeth, mohair wig, BJCB

1400 LOT OF 2 EMMA CLEAR ARTIST DOLLS, 13 ½" blonde hair china, closed eyes, painted features, CM, PE, cloth body china hands & feet, & 17" Blonde hair china, painted features, cloth body, china hands & feet

1401 LOT OF 2 BLONDE PARIAN, 18" molded hair, ptd. features, cloth body, PE, face restorations antique clothes, & 18" molded hair, ptd. features, cloth body, antique clothes

1402 LOT OF 6 ARTIST DOLLS 8" – 12" in antique outfits

1403 LOT OF 2 BISQUE HEAD DOLLS, 16" AM 370, brown glass eyes, OM with teeth, mohair wig, kid body, & 14 ½" AM 1894, brown glass eyes, OM with teeth, synthetic wig, BJCB

1404 14 ½" WAX OVER COMPO, dark brown pupil less eyes, CM, PE, mohair wig, cloth body

1405 12" BISQUE HEAD INCISED 1079, blue glass sleep eyes, OM with teeth, PE, straight wrist compo body

1406 LOT OF 2 ARTIST DOLLS, 15" Emma Clear, molded blonde hair, painted features, cloth body with bisque arms & legs, & 22" shoulder head Parian, blonde molded hair, PE, CM, painted features, cloth body

1407 LOT OF 2 BISQUE SHOULDER HEAD DOLLS, 18" horseshoe mark, blue glass eyes, OM with teeth, mohair wig, cloth body, & 17 ½" S PB H, brown glass sleep eyes, OM with teeth, mohair wig, kid body

1408 LOT OF 2 – 17" Paper Mache, black molded hair, painted features, CM, cloth body (paint touchups), & 14" German metal head, blue glass eyes, OM, cloth body

1409 14" SHOULDER HEAD PARIAN, molded blonde hair, blue glass eyes, kid body, bisque arms (2 fingers broken)

1410 15" SHOULDER HEAD PARIAN, painted features, CM, cloth body with bisque arms & legs, blue antique dress

1411 LOT OF 2 SMALL BLONDE shoulder head Parians, 7 ½" painted features, CM, cloth body, antique dress, & 11" painted features, CM, cloth body bisque arms & legs

1412 LOT OF 2 SHOULDER HEADS – 12 ½" blonde china boy, painted features, CM, cloth body china arms & legs antique blue outfit, & 14" Blonde Parian boy, painted features, CM, cloth body, blue coat

1413 1982 JUMEAU ARTIST DOLL, brown glass eyes, CM, PE, mohair wig, BJCB

1414 LOT OF 2 – 19" Bisque shoulder head Special, brown glass sleep eyes, OM with teeth, mohair wig, cloth body, & 19" bisque shoulder head 2015, brown glass sleep eyes, OM with teeth, mohair wig, cloth body

1415 22" EMMA CLEAR ARTIST DOLL, gray molded hair, PE, CM, cloth, blue dress

1416 LOT OF 2 – 13" Bisque baby, incised 11, painted features, OM, blonde painted hair, baby compo body, & 16" bisque shoulder head, blue glass sleep eyes, OM with teeth, mohair wig, cloth body

1417 LOT OF 2 – 20" blonde hair Parian, painted features, CM, cloth body, bisque arms & legs, & 19" blonde Parian boy, painted features, CM, cloth body, bisque arms & legs

1418 LOT OF 2 – 18 ½" Bisque head C M Bergman 1916, blue glass sleep eyes, OM with teeth, mohair wig, BJCB, blue dress, & 23" bisque head G&S Germany, blue glass eyes (replaced), OM with teeth, mohair wig, BJCB, red dress (melting)

1419 LOT OF 2 BABY DOLLS, 9 ½" Germany 1925, G S Putnam, Blue glass sleep eyes, CM, cloth body & 11" 152 OM, teeth, baby compo body, (eyes are loose, finger damage)

1420 LOT OF 2 – 22" Bisque head Max Handwerck Germany, brown glass sleep eyes, OM with teeth, mohair wig, BJCB, & 11" bisque head toddler, brown glass sleep eyes, OM with teeth, compo toddler body

1421 LOT OF 4 – 11" Teddy Bear by Ingrid's Little People & 3 artist dolls, 8" red haired girl, 12" Baby Betty, & 6" baby in blue knit outfit

1422 LOT OF 3 – 2 Doll dresses, 16" Bisque head 152, (needs stringing, eyes loose in head, baby compo body, 7" Bisque head AM 331, compo baby body (hand & foot as-is)

1423 RECTANGULAR DOME with 2 NIADA artist dolls with table crib, & cart

The End of Day 1 Non-Pictured Dolls

Stretch your legs... turn your chairs around

Time for the Extras!!

***** August 8, 2019 - Day 1 Extras *****

- E001 Lot of 10 modern doll house dolls in case
- E002 Lot of 2 large black baby dolls
- E003 Russian peasant couple
- E004 Lot of 2 vinyl dolls
- E005 2 – Large vinyl baby dolls, baby Cissy
- E006 Princess Diana Royal Wardrobe Collection doll & 4 outfits
- E007 Princess Diana artist doll
- E008 Lot of 2 small bisque head babies
- E009 Lot of 8 – Our gang figures in original packaging, by Mego
- E010 George & Martha Washington artist dolls by Clairmaid 1965
- E011 Lot of 6 Madame Alexander's in blue boxes
- E012 Lot of 6 modern dolls
- E013 2 - 4" Ashton Drake baby in pink, & compo 3 faced doll
- E014 Box lot of assorted modern dolls
- E015 Box lot of assorted modern dolls
- E016 Box lot of modern dolls
- E017 Box lot of modern dolls
- E018 Lot of 3 - 30" Patti Playpals
- E019 34" Patti Playpal
- E020 Lot of 2 Patti Playpals, 42" & 27"
- E021 Lot of 2 vinyl baby dolls
- E022 Lot of antique fabric
- E023 Box lot of wigs
- E024 Box lot of assorted dolls (as is)
- E025 Box lot of small dolls & accessories

- E026 Box lot of assorted clothing & accessories (some early)
- E027 Box lot of assorted shoes
- E028 German bakery lot
- E029 Lot of assorted hats
- E030 Lot of half dolls
- E031 Lot of buttons & accessories
- E032 Box lot of assorted clothing
- E033 Shirley Temple in original box & Lucille Ball doll
- E034 Tin Kitchen lot
- E035 Lot of 2 modern dolls
- E036 Box lot of assorted miniature animals, etc.
- E037 Box lot of assorted miniatures
- E038 Lot of 5 modern dolls including a Sasha, 4 in original boxes
- E039 Lot of 2 domes
- E040 Lot of 14 shoulder head artist doll heads
- E041 Box lot of doll cloth doll bodies
- E042 Lot of composition & celluloid dolls
- E043 Box lot of doll wigs
- E044 Lot of 2 modern dolls, 1 – UFDC 61st Convention doll
- E045 Lot of 3 small doll carriages & 1 sleigh
- E046 2 – Lots of small dresses, etc.
- E047 Box lot of assorted doll clothes
- E048 Box lot of assorted smalls
- E049 5 – pcs assorted furniture, & 1 spool cabinet with contents
- E050 Lot of fabric on roll framed items

- E051 Small metal & wood spiral staircase
- E052 Box lot of doll reference books
- E053 Box lot of doll reference books & catalogs
- E054 Box lot of doll reference books & catalogs
- E055 Box lot of doll reference books & catalogs
- E056 Box lot of doll reference books & catalogs
- E057 Box lot of patterns & doll reference books
- E058 Lot of 4 framed items
- E059 Lot of assorted doll house items
- E060 Lot of 5 framed items
- E061 Lot of 3 framed pictures & shelf unit
- E062 Lot of bisque dolls & doll parts
- E063 Lot of miniature tin sewing machines, Shaker box, & cherry basket
- E064 Lot of iron fluting irons
- E065 Easter in a basket lot
- E066 Misc. china lot
- E067 Small strap trunk
- E068 Small country store display with contents & chair & miniature front door display
- E069 Miniature couch & 2 crèche figures (as is)
- E070 Lot of stuffed animals, artist doll, misc. toys
- E071 Lot of 5 large framed prints
- E072 Opportunity box lots
- E073 Opportunity box lots
- E074 Very large opportunity box lot
- E075 Lot of dome bases & glass domes

***** NOTES *****

*The End of Day 1 Doll Auction - Thank you for attending today's Auction...
Thursday evening - Preview Party for the Doll auction Tomorrow - 7:00 - 9:00 pm.
Friday Morning Preview 8:00 - 10:00am - 400 Meaty Box Lots of
Treasures from Dolores' Studio / Workshop!! Auction Starts@ 10:00 am.*

August 9, 2019 - Dolores Smith - Accessory Lots

- D001 Large box lot of lace
- D002 Large box lot fur & wig parts
- D003 Box lot of assorted antique doll clothes & hats
- D004 Box lot of antique fabric
- D005 Box lot of white lace & doll clothes
- D006 Large lot of vintage doll clothes
- D007 12" Fashion doll, as is
- D008 Box lot of doll clothes, hats, wig
- D009 Box lot of doll white clothes
- D010 Box lot floral accessories
- D011 Box lot of lace
- D012 Lot of 3 pieces of doll furniture
- D013 Box lot of doll & child's whites
- D014 Box lot of doll eyes & accessories
- D015 Lot of doll furniture
- D016 Lot of doll hats, clothes, etc
- D017 Box lot of doll hats
- D018 Lot of doll furniture
- D019 Box lot of doll parts
- D020 Lot of bisque shoulder plates
- D021 Box lot of doll patterns
- D022 Box lot of ribbons and lace
- D023 Box lot of doll clothes
- D024 Box lot of leather and gloves
- D025 Lot of 3 doll trunks

D026 Box lot of sew supplies
D027 Box lot of hats
D028 2 large composition bodies
D029 Large box of sewing supplies
D030 Box lot of sewing supplies
D031 Box lot of sewing supplies and trim
D032 Box lot of doll patterns
D033 Box lot of frames
D034 Box lot of hats
D035 Box lot of frames
D036 Box lot of German composition bodies
D037 Box lot of fabric and clothes
D038 Box lot of fabric and ribbon
D039 Box lot of miscellaneous artist supplies
D040 Large box lot of lace
D041 Box lot of fabric
D042 Box lot of sewing supplies and handkerchiefs
D043 Box lot of kid bodies
D044 Box lot of kid bodies
D045 Box lot of composition bodies
D046 Box lot of fabric
D047 3 mannequins
D048 Wedding dress and one shoe
D049 Box lot of cloth bodies
D050 Box lot of French bodies and parts

- D051 Box lot of doll clothes and accessories
- D052 Box lot of sewing and needlework supplies
- D053 Box lot of silk ribbon
- D054 Box lot of old clothes
- D055 Box lot of fabric
- D056 Box lot of sewing supplies
- D057 Box lot of lace
- D058 Box lot of fabric
- D059 Suitcase with 3 small doll trunks
- D060 Box lot of Flapper patterns
- D061 Wicker basket with doll
- D062 Box lot of fabric
- D063 Box lot of miscellaneous supplies
- D064 Box lot of pates and mohair wigs
- D065 Box lot of fabric
- D066 Modern room box
- D067 Box lot of ribbon, fabric and accessories
- D068 Box lot of doll furniture and accessories
- D069 2 wicker baskets of patterns
- D070 Box lot of antique fabric
- D071 2 boxes of fabric
- D072 2 boxes of fabric
- D073 2 chairs and slant front desk furniture
- D074 Box lot of ribbon and lace
- D075 Box lot of ribbon and lace

D076 Box lot of miscellaneous
D077 Box lot of doll dress forms
D078 Box lot of fabric
D079 Box lot of clothes and accessories
D080 Box lot of composition bodies
D081 Box lot of sewing supplies
D082 Box lot of fabric
D083 Box lot of small composition bodies
D084 Box lot of assorted miniatures
D085 Box lot of patterns
D086 Box lot of doll parts
D087 Box lot of fabric
D088 Box lot of fabric
D089 Box lot of miniatures
D090 Box lot of patterns
D091 Box lot of doll bodies, heads and clothes
D092 Box lot of doll wigs
D093 Box lot of doll clothes
D094 Box lot of fabric and doll clothes
D095 Box lot of fur pieces
D096 2 boxes of patterns
D097 Box lot of small doll bodies
D098 Box lot of fabric
D099 Box lot of fabric
D100 Box lot of fabric and lace

- D101 Large box lot of assorted antique single shoes
- D102 Lot of 6 pairs of larger antique doll shoes
- D103 Large lot of larger antique doll shoes, socks, skates
- D104 Box of assorted shoe parts
- D105 Large lot of assorted doll shoes
- D106 Lot of 10 pair of doll shoes
- D107 Large lot of assorted doll shoes
- D108 Lot of assorted doll shoes
- D109 Lot of assorted doll shoes
- D110 Box lot of assorted of assorted ribbons & trim
- D111 Lot of doll parts & modern dolls
- D112 Lot of dolls & doll parts
- D113 Box lot of doll clothes
- D114 Lot of 3 small bisque head dolls undressed
- D115 Lot of nine small bisque head dolls
- D116 2 – Bisque head dolls
- D117 Lot of 3 bisque head dolls & doll body
- D118 Box lot of dress forms
- D119 Lot of small baskets
- D120 Lot of assorted smalls, animals, china, etc
- D121 Lot of small animals, clothes, etc.
- D122 Lot of assorted smalls
- D123 Lot of assorted smalls
- D124 Lot of clothes, fabric, parasol, etc
- D125 Lot of 2 framed samplers & 4 partial samplers

- D126 Lot of hats
- D127 Lot of early small animals
- D128 Assorted lot of tinware, china, sterling silver child's cup
- D129 Lot of assorted smalls
- D130 Lot of assorted fur items
- D131 Lot of assorted smalls
- D132 Lot of assorted smalls
- D133 Lot of assorted smalls
- D134 Lot of assorted dolls
- D135 Lot of doll furniture & accessories
- D136 Lot of 4 bisque head dolls
- D137 Lot of 3 dolls, Googly (as is), small china, & bisque head
- D138 Lot of 4 wax head dolls (as is)
- D139 Lot of 4 dolls, 3 bisque head, 1 – paper mache
- D140 Lot of early doll clothes
- D141 Lot of 4 bisque head dolls, 2 – artist dolls, Limoge, & baby
- D142 Lot of 3 porcelain figurines, piano baby, 1 (as is)
- D143 Box lot of assorted lace
- D144 Box lot of assorted mohair pieces, wigs, etc.
- D145 Box lot of assorted ribbons, trim, etc.
- D146 Box lot of assorted fabric
- D147 Box lots of assorted flowers
- D148 Large box of ball sockets
- D149 Large box of assorted fabric
- D150 Box lot of assorted fabric

- D151 Lot of bisque doll heads
- D152 Box lot of dress forms
- D153 Jumeau body & broken head
- D154 Lot of doll bodies & bisque heads
- D155 Box lot of doll parts
- D156 Lot of assorted sewing thread
- D157 Lot of doll hangers
- D158 Lot of doll bodies/head
- D159 Lot of assorted dolls (as is)
- D160 Lot of assorted dolls (as is)
- D161 Large box lot of yarn
- D162 Lot of doll furniture, mirror, sled
- D163 Box lot of sewing supplies
- D164 2 – Bisque head babies, Grace Story Putnam & 1904 made in Austria
- D165 Box lot of clothes, small sled, & bisque head doll c/m dep
- D166 Large lot of socks & fabric
- D167 Lot of 3, dog pajama bag, teddy bear with no head, & white dog (as is)
- D168 Lot of early doll dresses & fabric
- D169 Lot of early doll dresses
- D170 Box lot of small bisque & china dolls
- D171 Box lot of small baskets
- D172 Box lot of assorted doll clothes
- D173 Lot of 6 domes of various sizes
- D174 Lot of assorted fabric, clothes, etc.
- D175 Lot of assorted doll heads, parts, (as is)

- D176 Lot of 3 opportunity box lots
- D177 Large lot of doll parts
- D178 2 – Christmas Diarama's
- D179 Presentation box with doll & outfits
- D180 Lot of trim
- D181 Box lot of sewing supplies
- D182 Box lot of early dresses
- D183 Box lot of assorted fabric, trim, & dresses
- D184 Box lot of doll dresses mostly whites
- D185 Box lot of assorted smalls
- D186 Lot of assorted doll shoes
- D187 Lot of assorted doll shoes
- D188 Basket with doll carriages, tin bed, & cast iron stove
- D189 Lot of fabric & trim
- D190 Lot of doll parts
- D191 Lot of early fabric
- D192 Lot of 4 doll dress forms
- D193 2 – Boxes of assorted fabric
- D194 Box lot of small dolls & accessories
- D195 Box lot of assorted smalls
- D196 Box lot of assorted smalls
- D197 Box lot of assorted small ermine fur
- D198 2 - Boxes of knitted doll clothing
- D199 Lot of white clothing
- D200 2 – Box lots of assorted fabric

- D201 Box lot of assorted trim
- D202 Box lot of assorted early fabric
- D203 Wood rack with trim spools & ironing board
- D204 Box lot of assorted fabric & dresses
- D205 Box lot of cloth/kid doll bodies
- D206 Box lot of assorted fabric
- D207 Lot of assorted smalls
- D208 Lot of assorted early fabric
- D209 Lot of assorted early fabric
- D210 Lot of assorted early fabric
- D211 Lot of assorted trim
- D212 Box of bolts of fabric
- D213 Box lot of boxes
- D214 Box lot of assorted clothes, etc.
- D215 Box lot of assorted clothes
- D216 Lot of assorted trims
- D217 Lot of assorted fabric
- D218 Box lot of assorted whites
- D219 Box lot of flowers
- D220 Box lot of fabric & ribbon mostly dark reds
- D221 Box lot of fabrics
- D222 Box lot of fabrics
- D223 Box lot of fabrics
- D224 Large lot of miniatures
- D225 Large lot of assorted miniatures

- D226 Lot of assorted dresses & fabric
- D227 Lot of silk fabric
- D228 Lot of silk fabric
- D229 Box lot of early fabric
- D230 Lot of fabric
- D231 Box lot of fabric
- D232 Lot of 9 small porcelain figurines
- D233 Lot of 3 large porcelain figurines
- D234 Lot of 4 large porcelain figurines
- D235 Large lot of assorted boxes
- D236 Oval framed watercolor of child with doll
- D237 Lot of stuffed & early toy animals
- D238 Lot of bride & groom cake toppers & small dresses
- D239 Lot of assorted smalls
- D240 Lot of 4 artist dolls
- D241 Box lot of fabric & dresses
- D242 Box lot of fabric
- D243 Lot of 3 mohair Teddy Bears
- D244 Lot of fabric, curtains, & dresses
- D245 3 Small boxes of assorted smalls
- D246 Large lot of blue fabric
- D247 Box lot of small dolls, books, animals
- D248 Lot of 6 mohair Teddy Bears & basket
- D249 Lot of 5 porcelain & bisque figurines
- D250 Lot of 7 porcelain figurines

- D251 Large lot of baskets & wicker items
- D252 Lot of Easter items
- D253 2 – Round hat boxes with antique hats
- D254 2 – doll trunks & presentation box with postcards
- D255 Child's hand painted dinner service set
- D256 Lot of 4 framed instant relatives
- D257 Box lot of stockings
- D258 Box lot of hat forms
- D259 Box lot of trims & early advertising
- D260 Box lot of blue fabrics
- D261 Box lot of fabric
- D262 Small Singer sewing machine
- D263 Box lot of fabric, pinks
- D264 Box lot of white clothing
- D265 Box lot of fabric
- D266 Lot of 9 porcelain figurines
- D267 Miniature furniture & rug lot
- D268 Suitcase full of fabric
- D269 Box of doll patterns
- D270 Lot of trims, advertising, daguerreotype frames, etc.
- D271 Oval glass & frame lot
- D272 Large lot of doll patterns
- D273 Box of wool fabric
- D274 Box of velvet fabric
- D275 Box of early fabric

- D276 Box of misc. fabric
- D277 Box lot of fabric
- D278 Box lot of silks
- D279 Box lot of blue fabric
- D280 Box lot of fabric & trim
- D281 Box lot of Misc.
- D282 Box lot of fabric
- D283 Box lot of fabric
- D284 Box lot of hats
- D285 Glass dome & small display case, room box, china
- D286 Lot of gloves & books, etc
- D287 Paper doll collection
- D288 Modern room box
- D289 Box lot of picture frames/pictures
- D290 Box lot of picture frames/pictures
- D291 Box lot of Misc.
- D292 Box lot of Misc.
- D293 4 – Small bisque head baby dolls & 2 – Izannah Walker artist dolls
- D294 Box lot of assorted small early items, chairs, cradle, sled, doll house dolls, etc.
- D295 Lot of assorted Christmas brush trees
- D296 Large lot of doll eyes and doll eye repair parts
- D297 Lot of Misc. miniature items
- D298 Lot of assorted doll parts, balls, legs, etc.
- D299 Dress form & dress, & outfit in box
- D300 Box lot of fur pieces & trim

- D301 Lot of German metal dogs, paper mache & fur covered animals
- D302 Lot of china head & doll parts
- D303 Misc. fabric, clothes, small braided rugs
- D304 Large lot of assorted smalls
- D305 Lot of early boxes, etc.
- D306 Box lot of picture frames
- D307 Box lot of patterns & reference books
- D308 Box lot of doll patterns
- D309 Box lot of doll reference books
- D310 Box lot of doll reference books
- D311 Box lot of doll reference books & 3 early Lady' Books
- D312 Box lot of doll reference books
- D313 Box lot of doll reference books
- D314 Box lot of doll reference books
- D315 Box lot of doll reference books with the Encyclopedia of French Dolls
- D316 Box lot of sewing & pattern books
- D317 Box lot of trim, ribbons & lace, etc.
- D318 Box lot of trim, ribbons, & lace, etc.
- D319 Box lot of trim, ribbons & lace, etc.
- D320 Box lot of trim, ribbons, lace, etc
- D321 Box lot of assorted smalls
- D322 Box lot of early bathroom items
- D323 Box lot of early bathroom items
- D324 Box lot of Victorian glass knife rets
- D325 Assorted seasonal lot, Easter, Christmas, & Thanksgiving

- D326 Baby & dog lot
- D327 Lot of early miniature tin items
- D328 Lot of early miniature tin items
- D329 Lot of early miniature tin items & bathroom fixtures
- D330 Box lot of assorted dolls, animals, furniture, toys, etc.
- D331 Lot of 3 framed oil paintings
- D332 Lot of 4 framed items,
- D333 Lot of 2 framed prints
- D334 Box lot of small cups & saucers
- D335 Lot of assorted small china cups, bowls, etc.
- D336 Box lot of small boxes
- D337 Box lot of assorted smalls
- D338 Box lot of assorted smalls
- D339 Box lot of assorted smalls
- D340 Box lot of assorted smalls
- D341 Box lot of assorted small dolls
- D342 Box lot of assorted smalls
- D343 Box lot of doll patterns
- D344 Box lot of assorted sewing items
- D345 Box lot of misc. early smalls
- D346 Box lot of misc. smalls
- D347 6 – Framed prints
- D348 Lot of misc. wagons, sleds & horses
- D349 Box lot of miniature furniture
- D350 Box lot of miniature furniture

- D351 Box lot of miniature furniture
- D352 Box lot of miniature furniture
- D353 Box lot of assorted smalls
- D354 Wertheim child's pedal sewing machine
- D355 Box lot of assorted smalls
- D356 Box lot of miniature furniture
- D357 Box lot of assorted miniatures
- D358 Box lot of assorted miniatures
- D359 Box lot of miniature furniture
- D360 Box lot of misc. early bathroom advertising
- D361 Box lot of misc. early advertising, early Warner's bottle
- D362 Box lot of hats
- D363 Box lot of assorted mostly small bears
- D364 Lot of 3 deep frame items
- D365 Box lot of assorted small dolls & accessories
- D366 Lot of miniature bathroom fixtures
- D367 Box lot of assorted single early shoes
- D368 Lot of tin miniature bathroom fixtures & figurines
- D369 Box lot of figurines
- D370 Box lot of figurines
- D371 Dome top doll trunk with early clothes
- D372 Lot of 3 small child's chairs, 1 early high chair
- D373 Lot of early Victorian clothing & accessories (very good lot)
- D374 2 - Framed theorem paintings
- D375 Lot of 4 framed items

- D376 Lot of 4 framed items
- D377 Lot of 6 framed items
- D378 Box lot of early fabric
- D379 Box lot of lace & trim
- D380 Box lot of fabric pieces
- D381 Box lot of lace & trims
- D382 2 – Boxes of yarns
- D383 Hamper full of early fabric
- D384 Basket of small dolls, parts, clothes
- D385 Lot of 4 dolls (as is)
- D386 Lot of 4 child's dresses & 4 large hats
- D387 Box lot of sewing items
- D388 Lot of 4 framed items
- D389 Lot of assorted small furniture, carriage, bank, etc.
- D390 Lot of sewing thread supplies
- D391 Box lot of doll parts
- D392 Box lot of doll neck stringing supplies & springs
- D393 Singer portable sewing machine
- D394 Bernette portable sewing machine
- D395 Cabinet scene of mother & kids in the park
- D396 Room box with miniature furniture
- D397 Lot of three figurines
- D398 Lot of small all bisque dolls & 1 china doll
- D399 Lot of assorted smalls
- D400 Lot of Christmas items & doll head ornaments

***** The End... Thank you for attending the Auction *****
Hope to see you at the Final Auction of the season & Year-end Party
Nov. 6: Doll Show & Sale 3rd Floor Rooms
Nov. 7&8: 2-Day Auction (1,000 Lots) A Lifetime Collection from Upstate NY
For Reservations call Laurie: 603-888-1551 Holiday Inn Nashua, NH
To Consign Dolls - call the Dollhouse- 603-478-3232 for a Free Consultation



