

A collection of vintage dolls and a medicine cabinet for an auction. The central focus is a wooden cabinet with a blue sign that reads "HUMPHREY'S SPECIFICS". The sign lists various ailments and their corresponding remedies, such as "Catarrh, Influenza, Cold in Head" and "Whooping Cough, Spasmodic Cough". To the left of the cabinet stands a large doll in a white blouse and blue skirt. To the right is a doll in a blue dress and white hat, holding a small box. In the foreground, several smaller dolls are displayed, including one in a blue and white striped dress, one in a blue and red striped dress, and one in a white lace dress. The background features a patterned curtain and a small table with various items, including a blue and white bowl and a small box. The text "WITHINGTON AUCTION, Inc." is at the top, "Absentee Auction" is in the middle, and "July 8 - 16, 2020" is at the bottom.

WITHINGTON AUCTION, Inc.

Absentee Auction

HUMPHREY'S SPECIFICS

SPECIFIC FOR

19 Catarrh, Influenza, Cold in Head.

20 Whooping Cough, Spasmodic Cough.

21 Asthma, Oppressed Breathing.

22 Ear Discharge, Earache.

23 Scrofula, Ulcers, Swindles, Swellings.

24 General Debility, Nervous Weakness.

25 Dropsy, Drops, Rheumatism, Gout, Gravel, etc.

26 Indigestion, Flatulency, Colic, etc.

27 Hysteria, Nervous Prostration, etc.

28 Rheumatism, Neuralgia, etc.

29 Pains in the Back, Limbs, etc.

30 Pains in the Head, etc.

31 Pains in the Stomach, etc.

32 Pains in the Throat, etc.

33 Pains in the Chest, etc.

34 Pains in the Lungs, etc.

35 Pains in the Liver, etc.

36 Pains in the Gallbladder, etc.

37 Pains in the Kidneys, etc.

38 Pains in the Bladder, etc.

39 Pains in the Uterus, etc.

40 Pains in the Vagina, etc.

41 Pains in the Prostate, etc.

42 Pains in the Testes, etc.

43 Pains in the Penis, etc.

44 Pains in the Scrotum, etc.

45 Pains in the Perineum, etc.

46 Pains in the Anus, etc.

47 Pains in the Rectum, etc.

48 Pains in the Sigmoid Colon, etc.

49 Pains in the Descending Colon, etc.

50 Pains in the Ascending Colon, etc.

51 Pains in the Cecum, etc.

52 Pains in the Duodenum, etc.

53 Pains in the Jejunum, etc.

54 Pains in the Ileum, etc.

55 Pains in the Cecocolon, etc.

56 Pains in the Sigmoidocolon, etc.

57 Pains in the Descendingocolon, etc.

58 Pains in the Ascendingocolon, etc.

59 Pains in the Cecocolon, etc.

60 Pains in the Sigmoidocolon, etc.

61 Pains in the Descendingocolon, etc.

62 Pains in the Ascendingocolon, etc.

63 Pains in the Cecocolon, etc.

64 Pains in the Sigmoidocolon, etc.

65 Pains in the Descendingocolon, etc.

66 Pains in the Ascendingocolon, etc.

67 Pains in the Cecocolon, etc.

68 Pains in the Sigmoidocolon, etc.

69 Pains in the Descendingocolon, etc.

70 Pains in the Ascendingocolon, etc.

71 Pains in the Cecocolon, etc.

72 Pains in the Sigmoidocolon, etc.

73 Pains in the Descendingocolon, etc.

74 Pains in the Ascendingocolon, etc.

75 Pains in the Cecocolon, etc.

76 Pains in the Sigmoidocolon, etc.

77 Pains in the Descendingocolon, etc.

78 Pains in the Ascendingocolon, etc.

79 Pains in the Cecocolon, etc.

80 Pains in the Sigmoidocolon, etc.

81 Pains in the Descendingocolon, etc.

82 Pains in the Ascendingocolon, etc.

83 Pains in the Cecocolon, etc.

84 Pains in the Sigmoidocolon, etc.

85 Pains in the Descendingocolon, etc.

86 Pains in the Ascendingocolon, etc.

87 Pains in the Cecocolon, etc.

88 Pains in the Sigmoidocolon, etc.

89 Pains in the Descendingocolon, etc.

90 Pains in the Ascendingocolon, etc.

91 Pains in the Cecocolon, etc.

92 Pains in the Sigmoidocolon, etc.

93 Pains in the Descendingocolon, etc.

94 Pains in the Ascendingocolon, etc.

95 Pains in the Cecocolon, etc.

96 Pains in the Sigmoidocolon, etc.

97 Pains in the Descendingocolon, etc.

98 Pains in the Ascendingocolon, etc.

99 Pains in the Cecocolon, etc.

100 Pains in the Sigmoidocolon, etc.

101 Pains in the Descendingocolon, etc.

102 Pains in the Ascendingocolon, etc.

103 Pains in the Cecocolon, etc.

104 Pains in the Sigmoidocolon, etc.

105 Pains in the Descendingocolon, etc.

106 Pains in the Ascendingocolon, etc.

107 Pains in the Cecocolon, etc.

108 Pains in the Sigmoidocolon, etc.

109 Pains in the Descendingocolon, etc.

110 Pains in the Ascendingocolon, etc.

111 Pains in the Cecocolon, etc.

112 Pains in the Sigmoidocolon, etc.

113 Pains in the Descendingocolon, etc.

114 Pains in the Ascendingocolon, etc.

115 Pains in the Cecocolon, etc.

116 Pains in the Sigmoidocolon, etc.

117 Pains in the Descendingocolon, etc.

118 Pains in the Ascendingocolon, etc.

119 Pains in the Cecocolon, etc.

120 Pains in the Sigmoidocolon, etc.

121 Pains in the Descendingocolon, etc.

122 Pains in the Ascendingocolon, etc.

123 Pains in the Cecocolon, etc.

124 Pains in the Sigmoidocolon, etc.

125 Pains in the Descendingocolon, etc.

126 Pains in the Ascendingocolon, etc.

127 Pains in the Cecocolon, etc.

128 Pains in the Sigmoidocolon, etc.

129 Pains in the Descendingocolon, etc.

130 Pains in the Ascendingocolon, etc.

131 Pains in the Cecocolon, etc.

132 Pains in the Sigmoidocolon, etc.

133 Pains in the Descendingocolon, etc.

134 Pains in the Ascendingocolon, etc.

135 Pains in the Cecocolon, etc.

136 Pains in the Sigmoidocolon, etc.

137 Pains in the Descendingocolon, etc.

138 Pains in the Ascendingocolon, etc.

139 Pains in the Cecocolon, etc.

140 Pains in the Sigmoidocolon, etc.

141 Pains in the Descendingocolon, etc.

142 Pains in the Ascendingocolon, etc.

143 Pains in the Cecocolon, etc.

144 Pains in the Sigmoidocolon, etc.

145 Pains in the Descendingocolon, etc.

146 Pains in the Ascendingocolon, etc.

147 Pains in the Cecocolon, etc.

148 Pains in the Sigmoidocolon, etc.

149 Pains in the Descendingocolon, etc.

150 Pains in the Ascendingocolon, etc.

151 Pains in the Cecocolon, etc.

152 Pains in the Sigmoidocolon, etc.

153 Pains in the Descendingocolon, etc.

154 Pains in the Ascendingocolon, etc.

155 Pains in the Cecocolon, etc.

156 Pains in the Sigmoidocolon, etc.

157 Pains in the Descendingocolon, etc.

158 Pains in the Ascendingocolon, etc.

159 Pains in the Cecocolon, etc.

160 Pains in the Sigmoidocolon, etc.

161 Pains in the Descendingocolon, etc.

162 Pains in the Ascendingocolon, etc.

163 Pains in the Cecocolon, etc.

164 Pains in the Sigmoidocolon, etc.

165 Pains in the Descendingocolon, etc.

166 Pains in the Ascendingocolon, etc.

167 Pains in the Cecocolon, etc.

168 Pains in the Sigmoidocolon, etc.

169 Pains in the Descendingocolon, etc.

170 Pains in the Ascendingocolon, etc.

171 Pains in the Cecocolon, etc.

172 Pains in the Sigmoidocolon, etc.

173 Pains in the Descendingocolon, etc.

174 Pains in the Ascendingocolon, etc.

175 Pains in the Cecocolon, etc.

176 Pains in the Sigmoidocolon, etc.

177 Pains in the Descendingocolon, etc.

178 Pains in the Ascendingocolon, etc.

179 Pains in the Cecocolon, etc.

180 Pains in the Sigmoidocolon, etc.

181 Pains in the Descendingocolon, etc.

182 Pains in the Ascendingocolon, etc.

183 Pains in the Cecocolon, etc.

184 Pains in the Sigmoidocolon, etc.

185 Pains in the Descendingocolon, etc.

186 Pains in the Ascendingocolon, etc.

187 Pains in the Cecocolon, etc.

188 Pains in the Sigmoidocolon, etc.

189 Pains in the Descendingocolon, etc.

190 Pains in the Ascendingocolon, etc.

191 Pains in the Cecocolon, etc.

192 Pains in the Sigmoidocolon, etc.

193 Pains in the Descendingocolon, etc.

194 Pains in the Ascendingocolon, etc.

195 Pains in the Cecocolon, etc.

196 Pains in the Sigmoidocolon, etc.

197 Pains in the Descendingocolon, etc.

198 Pains in the Ascendingocolon, etc.

199 Pains in the Cecocolon, etc.

200 Pains in the Sigmoidocolon, etc.

201 Pains in the Descendingocolon, etc.

202 Pains in the Ascendingocolon, etc.

203 Pains in the Cecocolon, etc.

204 Pains in the Sigmoidocolon, etc.

205 Pains in the Descendingocolon, etc.

206 Pains in the Ascendingocolon, etc.

207 Pains in the Cecocolon, etc.

208 Pains in the Sigmoidocolon, etc.

209 Pains in the Descendingocolon, etc.

210 Pains in the Ascendingocolon, etc.

211 Pains in the Cecocolon, etc.

212 Pains in the Sigmoidocolon, etc.

213 Pains in the Descendingocolon, etc.

214 Pains in the Ascendingocolon, etc.

215 Pains in the Cecocolon, etc.

216 Pains in the Sigmoidocolon, etc.

217 Pains in the Descendingocolon, etc.

218 Pains in the Ascendingocolon, etc.

219 Pains in the Cecocolon, etc.

220 Pains in the Sigmoidocolon, etc.

221 Pains in the Descendingocolon, etc.

222 Pains in the Ascendingocolon, etc.

223 Pains in the Cecocolon, etc.

224 Pains in the Sigmoidocolon, etc.

225 Pains in the Descendingocolon, etc.

226 Pains in the Ascendingocolon, etc.

227 Pains in the Cecocolon, etc.

228

Absentee Auction

1877
 FOR
 GRIP
 HUMPHREYS
 SPECIFICS
 TRADE MARK

SPECIFIC FOR		SPECIFIC FOR	
25	19	25	20
25	20	25	21
25	21	25	22
25	22	25	23
25	23	25	24
25	24	25	25
25	25	25	26
25	26	25	27
25	27	25	28
25	28	25	29
25	29	25	30
25	30	25	31
25	31	25	32
25	32	25	33
25	33	25	34
25	34	25	35
25	35	25	36
25	36	25	37
25	37	25	38
25	38	25	39
25	39	25	40
25	40	25	41
25	41	25	42
25	42	25	43
25	43	25	44
25	44	25	45
25	45	25	46
25	46	25	47
25	47	25	48
25	48	25	49
25	49	25	50
25	50	25	51
25	51	25	52
25	52	25	53
25	53	25	54
25	54	25	55
25	55	25	56
25	56	25	57
25	57	25	58
25	58	25	59
25	59	25	60
25	60	25	61
25	61	25	62
25	62	25	63
25	63	25	64
25	64	25	65
25	65	25	66
25	66	25	67
25	67	25	68
25	68	25	69
25	69	25	70
25	70	25	71
25	71	25	72
25	72	25	73
25	73	25	74
25	74	25	75
25	75	25	76
25	76	25	77
25	77	25	78
25	78	25	79
25	79	25	80
25	80	25	81
25	81	25	82
25	82	25	83
25	83	25	84
25	84	25	85
25	85	25	86
25	86	25	87
25	87	25	88
25	88	25	89
25	89	25	90
25	90	25	91
25	91	25	92
25	92	25	93
25	93	25	94
25	94	25	95
25	95	25	96
25	96	25	97
25	97	25	98
25	98	25	99
25	99	25	100

July 8 - 16, 2020



WITHINGTON AUCTION, Inc.

Absentee Auction - July 8 - 16, 2020

Due to **COVID19** restrictions on large gatherings, the first Doll Auction of 2020 will be **** ONLINE ONLY****

ABSENTEE AUCTION SALE # 2579

PREVIEW WEEKEND DOLL SHOW & SALE

HOTEL INFO

WEB-SITE ABSENTEE BIDDING

TERMS

STAFF

CONSIGNING Your Collection

CONTACT 603-478-3232 FAX-478-3233

Auction starts Wednesday - July 8th, Ends Thursday - July 16th, 2020

Bid on our Absentee bidder form or Internet Only - You have 8 days to bid!

Register to Bid on Link on Withington's WEB-site

17 Atwood Rd. Hillsboro, NH 03244 (for info- 603-478-3232)

AUCTION PREVIEW - *See the dolls in person (or by appointment)*

July 10th - 11th - 12th - From 10am - 4pm at Withington's Dollhouse

July 11th **Sat. Only "Pop-up" Tailgate Doll Show & Sale (set-up is free)**

In the low field, 17 Atwood Rd. (Bring your Gypsie Wagon!) - **BUY * SELL * TRADE** -

1830 House Motel: 603-478-3135 (it's close.. the Castle Soap is nice)

Henniker Motel - 603-428-3536 has a pool... near Henniker Brewing Co.

MANY HOTELS IN CONCORD, NH (30 MILES AWAY)

Full Color Catalogue - \$15. View Cat on-line & More photos

FOR TERMS AND CONDITIONS OF THE SALE - www.withingtonauction.com For Info: Tel: (603)- 478-3232

REGISTER TO BID - FOLLOW THE LINK ON OUR WEB-SITE

Purchases may be picked up after the auction by appointment only - 603-478-3232

Descriptions: Withington Auction Inc. makes every effort to accurately describe all items offered in this sale. All items in this auction will be sold as-is and it is the bidder's responsibility to determine the exact condition of each item. If there are any known flaws or damage to a lot, we make every effort to state each and every defect that would influence the value of the doll / lot. There are many photos of each lot on the WEB-site and ample time to inspect the lots, so bid accordingly.

If you have any questions, please call: 603-478-3232. All Sales are Final.

**15% Buyer's Premium - on all purchases
Visa & Mastercard accepted - No NH Sales Tax**

Larry Leizure - Pres., Appraiser, Doll Specialist, Restoration Carpenter, plumber, etc. etc...

Marcia Leizure - NH Auctioneer's Lic. # 4028, Trucker, Events, Writer, Graphic Design. etc...

Bob Bouchard - Buildings & Grounds / Assistant Doll Specialist, Warehouse manager...

Barbara Scully - Asst. Auctioneer, Doll Specialist & Consultant, Social Media, events...

Mary Dominick - Photography, Chief clerk, Events team,

Linnea Steeves - Administrative Asst. Events, Archives, Organizational Specialist

Dolores Smith - June 1940 - Oct. 2018, "The Doll world will never be the same without you!"

Dick Withington 1918 - 2008 NH Lic. #1 "The Nation's Leading Doll Auctioneer"

Thinking about Selling your dolls? But don't know how to begin....

Withington's can answer your questions about the Auction process. We anticipate a Year End Auction Event in October and there is still room to get your dolls into the sale. Please Call: 603-478-3232 for info - or E-Mail (withington@conknet.com), photos or an inventory for a free appraisal.

WITHINGTON AUCTION, INC.

17 Atwood Road Hillsborough, NH 03244

E-mail: withington@conknet.com * 603-478-3232 * WEB: www.withingtonauction.com

GREETINGS*****July 2019

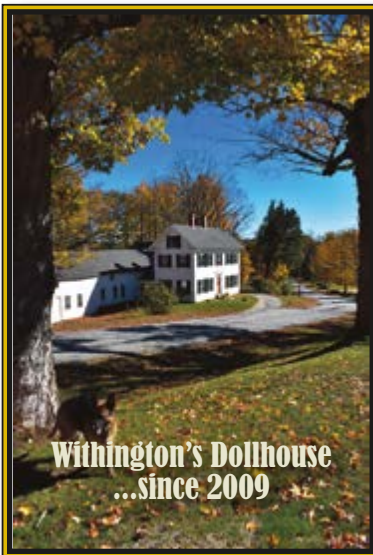
FROM THE DOLLHOUSE

Perhaps this is a test....Only A "Test"... to give this stalwart old company some insight into how our lives might be if retirement becomes a reality. Back in the late 1990's there was the major reorganization of Withington Auction... sparked by the announcement that all of Dick Withington's loyal crew were leaving... to spend more time with the family. The doll specialist needed to take care of her ailing husband, *(only to take a position with Fontaine Auction as chief of Doll acquisitions)*. Dick Jr. moved to Atlanta, Dan has been busy doing appraisals... and the rest of the crew has been collecting social security for a couple of decades now. It was at that time that Dick asked Larry to run "Withington Auction Phase II" ... until he found someone permanent. And now the third incarnation of Withington Auction may be closer than we thought. What do we do next?

As a result of this "Covid 19" pandemic, we have been forced to change most of our habits, schooling, shopping, traveling, socializing - to comply with state mandates regarding social distancing. Perhaps New Hampshire is the safest place to be in this uncertain time, for many reasons: It's one of the least populated states, with just a handful of areas considered "cities" with thousands ...rather than millions living there; international travelers are few, in our vast land of forests, lakes and mountainous playgrounds. Just imagine a Corona virus trying to connect with its next victim riding a stiff spring breeze. New Hampshire-ites always dread the arrival of Black Fly season in May, (those biting fruit-fly-size blood suckers, which leave itchy welts and allergic reactions.) PPE's include head nets and bug shirts and are mandatory uniforms when working outside. But oh, that stiff breeze will hold these pesky insects away and give some relief. So why can't it be with Corona, I imagine it would be like swimming upstream in a flash flood to these microscopic predators. Bring them on!

Before the crisis, February was the last time I visited my 99 year-old mother in Connecticut. With her age and health issues, she is pretty much in Lock-down. Several family members who work in the medical field, are hyper-vigilant with regards to taking precautions against contamination and are so protective of our old souls. Our routines have changed drastically and we have remained close to home. I do miss eating out... instead we drive-thru Micky D's, grab a couple of double cheeseburgers, and have a picnic at the swimming hole just down the road. I've been cooking, too... the savory aroma of spaghetti pie from the kitchen, always reminds me of Mondays at the doll house, when Dolores would arrive with her gathering basket and all the fixings for an Italian feast. *"I don't know haw it's going to taste... I haven't tried it yet."* Dolores, so humble, so caring of everyone around her... we miss her everyday.

The Covid Crisis has forced us to consider everything we are doing now... and do some soul searching, regarding our place in the future of the doll world. *In the time line:*



1951 - Withington conducted a foreclosure auction at the McNeil Farm. Dick needed a barn for his expanding auction business, and bought one of the three barns for \$300.00 and the cost of labor for three old guys, the barn was dismantled and rebuilt on his family's homestead. For the next 50 years was the home of Withington Auctions in Hillsborough Center. Larry and I assumed ownership in 2005 to the present, and Dick worked for us. Withington Auctions moved to the McNeil Farm in 2009, after Dick's passing and it has been *the new Dollhouse since that time.*

1952 - 1959 - Withington auction estate business was wildly successful, gaining national recognition as one of the best auctioneers of Americana... then, attending a Withington country auction was a must for serious antiques collectors across the country.

1959 - Dorothy Cram - well-known Doll expert and Collector, approached Dick about selling a doll museum in Hancock, NH "Mrs. Alexander Smith Doll Museum... a rare collection of outstanding dolls", consisting of 1500 dolls. Though Dick knew nothing about dolls, he was receptive to the potential of this auction of unusual antiques. He was pleasantly surprised with the ease of selling the dolls. The bumper crowd in attendance, enthusiastically bid, eager to acquire all manners of dolls, which comprised the collection. The very successful sale took three days, and was soon known as "Dick Withington - the Nation's leading Doll Auctioneer!" Withington's dolls - may not be the largest auction house, but it will always be

the FIRST auction house in this country have a department devoted to the acquisition, process and selling of quality antique dolls. Withington, for the past 60 years has been dedicated friend of antique dolls. Withington has long been a gathering place, providing an opportunity for the doll buyer and seller to come together. This helps to create strong bonds and to unify collectors - *helping to preserve, protect and promote... and hopefully perpetuate the world of Doll Collecting for future generations.*

As auctioneers and life-long collectors of all things antique - we have personally experienced the radical changes in collecting tastes over the past 50 years. How do you justify a slant-lid desk... if you are unable to use your laptop at your 19thC. workstation!? One usually considered form when acquiring furniture ... a small size flat-top Highboy, on cabriole legs has always been desirable.... but among millennials, function seems to take president over aesthetics. Heirlooms are family treasures, that have been passed down from one generation to the next. I remember 50 years ago, when we were "setting up housekeeping", a good used object like your grandmother's old wooden spoon was a welcome addition when you didn't have one. So few of these hand-made relics exist today... does anybody care? (My German Shepherd puppy just ate one of my favorites... and where ya gonna get another with 75 years of experience?) Perhaps in this auction.

At the end of last season, we received word that our dear friend and long-time customer, Mary White had passed away, after fighting a valiant battle with multiple health issues. During the winter months, we made several trips to their historic 18thC. Colonial - 13 rooms with the attached Rowley Country Store... loaded! In each visit was a whole new treasure hunt... wading through the hundreds of boxes, to discover hidden doors to one of multiple attics. Mary loved primitives, French Fashions, early textiles, and fine Doll house miniatures. This was evident if you ever visited her Boot at the doll shows.

We have chosen the best lots from several collections for this absentee auction, to tide you over until we can be together again. The auction will run for 8 days and you can register to bid by absentee or On-line with a link on the Web-site. I am looking forward to the time when, Corona is once again, something to enjoy ice cold, with extra lime! We are pleased to present fine dolls, quality miniatures, rare textiles and museum primitives, from several old collections.... with more to come in October.

Mary White Pt 1: 18th C. Colonial & Country Store, Early Dolls, Cloth, Chase, Rags, Wax, Wood, French Fashions, Steiner, Papier Mache, Mohair Bears, Doll house Dolls & Miniatures, Nuremberg Kitchen, Bonnets, Folk Art - Primitives: Early lighting, Spatterware, Iron, Paintings, Advertising, Treenware, Pantry boxes, Homespun, Quilts, Christmas; Sewing Antiques, Samplers, *Humphry's Medecine chest* - Schoenhut Hoosier, Early Fabrics, textiles, doll's clothes, Paper, and some really old stuff! Close your eyes and you are transported back to the 1800's when life was simple and all things, great and small, were precious and an important part of everyday life... no matter how flawed. Just imagine a young bride receiving a multicolored friendship quilt, lovingly sewn and assembled by the ladies of the village. Or, perhaps, a hand-carved wooden trencher with a chopper made by the village blacksmith.. they are treasures for many future generations.

Kathy Zimmerman#2: All Bisque; German & English Bisque Figurines, Characters, Half-dolls, Shadow boxes, Domes, Charlottes, Antique Christmas and so many tiny treasures...

Linda Rogers of Cape Cod Pt. 1: Selections from the studio of an master Doll Costumer Antique silks, lace, Textiles, Vintage, Sewing antiques, silver & gold thimbles; Wood-body Fashions & Trunks, Wardrobes; costumes, doll clothes, shoes, wigs, hats...

From ME, MA, NH: Fine Chinas & Exceptional Parians: Morning Glory (restored), Chinas: Pink-tint, Brown, Glass, bald, molded bodices, Spill curl, exposed ear, brush-strokes, w/ bonnets; Papier Mache, Jumeau; Eden Bebe, Mascotte, Rohmer, Bru w/ original box, Portrait Jumeau, Motherau, Simonne & Bru Fashions, EJ; Steiner; Kestner Bru; SFBJ, FG, Chase, Lencis, RJW, ST., M.A., Characters: K * R - Elise, Heubach, Googlies; All Bisque; black, Doll house, Schoenhut, Creche; Wicker Carriages, Room Boxes Mohair animals, & MORE!;

Remember you are cordially invited to come to the Dollhouse and preview the auction in person - July 10-11-12 (or by appointment)

Bonus: Tailgate Doll Show & Sale - Saturday, July 11 from 10 - 4:00pm

Set-up is free, Buy - Sell - Trade ... just like old times!!

Refreshments will be served.

Absentee Auction - July 8 - 16, 2020 (8-Days to bid)
17 Atwood Rd. Hillsboro, NH 03244 Auction Preview Weekend
July 10-11-12, 2020 10-4pm

View Cat On-Line isit our Website: www.withingtonauktion.com
or call The Dollhouse: 603-478-3232



Tailgate Doll Show & Sale
July 11, 10 - 4pm

Next Auction October 14-15-16 - Holiday Inn, Nashua, NH -
Provided the hotel is open and restrictions on assembly have been lifted.

WITHINGTON AUCTION, Inc.

17 Atwood Rd.
Hillsborough, NH 03244

Marcia Leizure - NH Lic. # 4028
withington@conknet.com

* 603-478-3232 *

Larry Leizure, President
www.withingtonauktion.com

July 8 - 16, 2020 Absentee Auction **OnLine Only****Starting
Bid**

01	13 ½” BAHR & PROSCHILD 244 DOME HEAD INDIAN DOLL , dark brown glass eyes, CM, PE (nicks), dark compo body, Indian dress & moccasins, (no wig)	300-
02	12” BAHR & PROSCHILD 244 DOME HEAD INDIAN DOLL , dark brown glass eyes, CM, PE (nick), dark compo body, Indian outfit, (no wig)	300
03	2 – 6 ½” AM 210 BISQUE HEAD GOOGLIES , painted features, compo body’s, painted shoes & socks, (1 has tiny chip at neck socket), blonde Campbell Kid hair	250
04	2 – HEUBACH BISQUE HEAD BOYS, 8 ½” , painted features, CM, blonde sculpted hair, compo body, inc 7303, black tuxedo, & 10” painted features, CM, blonde sculpted hair, compo body, (neck rubs), red plaid Scottish dress	200
05	LOT OF 9 SMALL ALL BISQUE DOLLS 3 “ – 5 ½” , painted shoes & socks, 5 with glass eyes, 4 – painted features, 5 with clothes, 4 – no clothes	600
06	3 – SMALL ALL BISQUE DOLLS, 4 ½” – 6” , glass eyes, CM, 1 dome head, painted shoes & socks, 2 - dressed	500
07	LOT OF 20+ 2” & 2 ½” BISQUE SWIVEL NECK FRENCH miniature dolls under glass dome some with mirror base, some in lift top trunk, 11” diameter dome, (glass dome has a large crack)	1200
08	23” KESTNER 146, BROWN GLASS SLEEP EYES , OM with teeth, blonde mohair wig, BJCB, white dress	250
09	22” 1254 GERMANY SHOULDER HEAD SCULPTED BLONDE HAIR PARIAN , blue glass eyes, O/CM, cloth body with bisque arms, blue check dress	150
10	4 ½” ALL BISQUE SWC 405 GOOGLY , painted features, brown mohair wig, black jumpsuit	200
11	PAIR OF 12” BISQUE DOME HEAD LADIES 5844 & 5846 GERMANY (Galluba Hofmann), painted features, cloth bodies, bisque limbs, & a rattan seat	400
12	8 ½” – BLACK BISQUE 116 ALL BISQUE WRESTLER TYPE , dark brown glass eyes, OM with teeth, PE, mohair wig, plaid dress, 2nd place ribbon	300
13	12 ½” BATHROOM SCENE ROOM BOX SETTING , tub, sink, toilet, etc., with 5 small black hair frozen Charlotte’s (1 has arm damage)	400
14	LOT OF 7 ROSE O’NEIL KEWPIES 4” – 6 ½” TALL , 2 with Kewpie labels	350
15	10” GALLUBA HOFMAN DOME HEAD LADY , painted features, cloth body, bisque limbs, with white Scotty dog, green ribbon	200
16	2 – CAPODIMONTE STYLE PIN CUSHION HALF DOLLS, 6 ½” fancy purple hat, painted features, bent forward arms, & 6” elaborate shawl, flowers in hair, painted features, booth have 1st place ribbons	200



001



002



003



004



005



006



007



008



009



010



011



012



013



014



015



016

Absentee Auction - July 8 - 16, 2020
Withington Auction, Inc. { 5 } 17 Atwood Rd. Hillsboro, NH



017



018



019



020



021



022



023



024



025



026



027



028



029



030



031



032

Absentee Auction - July 8 - 16, 2020
Withington Auction, Inc. { 6 } 17 Atwood Rd. Hillsboro, NH

- 17 2- 5" FRENCH SMALL BISQUE SWIVEL HEAD DOLLS** dressed as soldiers, glass eyes, CM, mohair wigs, early outfits **300**
- 18 4 ½" ALL BISQUE DOME SWIVEL HEAD LADY**, blue glass eyes, CM, painted high black stockings & brown shoes, pink dress, (firing flawtop of right ear) **300**
- 19 3 – 4 ½" FRENCH ALL BISQUE DOLLS**, glass eyes, CM, mohair wigs, black painted shoes, early outfits **400**
- 20 7 – SMALL 1 ½" – 4" PARIAN HEAD**, china head dolls, cloth bodies, 1 – peg wood body, 2 seated on Oriental couch, 6 dressed **300**
- 21 2 – 4" BLONDE SCULPTED HAIR BISQUE**, painted features, man & women, early outfits **100**
- 22 4 – 3 ½" ALL BISQUE DOLLS**, 2 – glass eyes, 2 – painted features, painted shoes & socks, 1 – high black socks, 3 – dressed **200**
- 23 6" ALL BISQUE "BONNIE BABE"**, girl, sculpted hair, blue glass sleep eyes, OM, painted shoes & socks, original white dress & hat **250**
- 24 6" ALL BISQUE "BONNIE BABE", BOY**, sculpted hair, brown glass sleep eyes, OM, painted shoes & socks, blue jumpsuit **250**
- 25 18 – ASSORTED SMALL HALF DOLLS**, 1 ½" – 3" **200**
- 26 9" BISQUE 170, BLUE GLASS SLEEP EYES**, OM with teeth, brown mohair wig, compo body, painted shoes & socks, white dress **200**
- 27 12" BISQUE KESTNER 5**, blue glass sleep eyes, CM, compo body, blonde mohair wig, dressed in Lederhosen **300**
- 28 13 ½" DARK BISQUE SIMON & HALBIG 1078**, dark brown glass eyes, OM with teeth, PE, BJCB, mohair wig, red dress, (firing line left side of nose) **300**
- 29 10" BISQUE KESTNER 155**, blue glass sleep eyes, OM with teeth, blonde mohair wig, BJCB, no clothes **250**
- 30 9" BISQUE BELTON TYPE 0**, blue glass eyes, CM, blonde mohair wig, compo body, blue dress, (left eye fleck) **200**
- 31 18" BISQUE KESTNER 167**, brown glass sleep eyes, OM with teeth, brown mohair wig, BJCB, blue dress (faded), (left fingers rough) **250**
- 32 16" BISQUE KESTNER 167**, blue glass sleep eyes, OM with teeth, blonde mohair wig, BJCB, white dress **250**

33	12" MOTSCHMANN BABY , dark pupiless glass eyes, compo body with cloth covered mid section, white dress, (nose & face rubs)	200
34	12" PAPER MACHE SHOULDER HEAD , blue glass eyes, CM, brown mohair wig, cloth body with compo limbs, molded boots, white dress, (face rubs)	100
35	7 – SMALL CHINA HEAD DOLLS , 3" – 5", 6 with cloth bodies, 1 peg wooden body, 1 dressed	150
36	13 – SM. 2 ½" – 3 ½" GERMAN BISQUE figures in various poses	250
37	7 – NANCY ANN STORYBOOK DOLLS , Judy Ann, Rock-A-Bye-Baby, To Market, Roses Are Red, Mary Lamb, Christening Baby, Baby, most 5" tall	250
38	LOT OF 5 – PORCELAIN FIGURINES IN VARIOUS SETTINGS , 5"–8" tall	200
39	LOT OF 4 – GERMAN PORCELAIN EDWARDIAN LADIES in various poses, 5 ½" – 9" tall	200
40	12 – NANCY ANN STORYBOOK DOLLS 4" – 5"	350
41	LOT OF 15 ASST. PORCELAIN FIGURES , 2" – 5 ½" tall, mostly German	300
42	LOT OF 8 KEWPIES , 10" standing, 8 ½" shoulder plate Hula Dancer on compo body, 5" Squatting, 3 ½" seated with basket, & 4 – small 1 ½" Kewpies	200
43	4 – 5" BISQUE PIN CUSHION DOLLS , painted features, bent arms	150
44	DOLL HOUSE ROOM DISPLAY CASE 11 ½" x 9" x 8", dining room setting, 4 chairs, table, sideboard, 8 bisque shoulder head dolls, & accessories	300
45	LOT OF 10 SMALL ALL BISQUE DOLLS 2" – 3", painted features, 3 dressed, 2 thumb suckers	200
46	LOT OF 20+ SM. BISQUE FIGURES 1½"–4", various poses/scenes	250
47	LOT OF 6 PORCELAIN FIGURES 5" – 8" TALL, 1 w/ blonde mohair wig	250
48	3 – 9" PORCELAIN BUSTS PROBABLY HEUBACHS	150



033



034



035



036



037



038



039



040



041



042



043



044



045



046



047



048

Absentee Auction - July 8 - 16, 2020
 Withington Auction, Inc. { 9 } 17 Atwood Rd. Hillsboro, NH



049



050



051



052



053



054



055



056



057



058



059



060



061



062



063



064

Absentee Auction - July 8 - 16, 2020
Withington Auction, Inc. {10} 17 Atwood Rd. Hillsboro, NH

49	9 – SMALL BLACK HAIR CHINA DOLLS, 3” – 8”, 6 undressed, 3 – dressed, 1 missing 1 arm, & small suitcase	250
50	13 – SMALL ALL BISQUE DOLLS 2” – 6”, including 4 ½” Baby Bo Kaye, in various poses	300
51	LOT OF 29 ASSORTED GERMAN SNOW BABIES, Snow Santa’s, etc., (damage to Elk horn)	300-
52	LOT OF 7 SMALL ALL BISQUE BYE-LO-BABIES, 3” – 5”, 2- wicker cradles, crib, double seat, 1 with label	250-
53	3 – 11” BISQUE FIGURES, lady with butterfly, man with beetle, & lady with fruit baskets	150
54	3 – GERMAN DOLLS, 2 – 10 ½” MAN & WOMEN wood dolls on wood bases, all carved features & dress, painted, & 9” mamma doll, paper mache head with painted features	200
55	8” ALL BISQUE “ALICE IN WONDERLAND”, sculpted blonde hair with ribbon, painted features, copper luster boots, painted socks	200-
56	LOT 7 – 6 SM. ALL BISQUE 4” – 5 ½”, molded hair/wigs, 2 – glass eyes, 4 painted features & 6” w/ molded bonnet, taufling body, painted features	300-
57	LOT OF 6 SMALL BISQUE HEAD & ALL BISQUE BLACK DOLLS, 4” – 7” various attire, 5 clothed	250-
58	LOT OF 2 - 6” ALL BISQUE 602, brown glass sleep eyes (right eye fleck), blonde mohair wig, OM w/ teeth, painted shoes & socks, knit dress, & 10 ½” dome head. Blue glass eyes, OM w/ teeth, blonde mohair wig, cloth body, white dress	400
59	LOT OF 2 13” CHASE BOYS, painted features, early clothing, (wear)	200
60	11” BISQUE AM 323 GOOGLY, blue glass eyes, CM, brown mohair wig, original clothes, (hairline in forehead)	400
61	2 - 13” BABYLAND RAG DOLLS, cloth faces, painted features, early clothes	200
62	13” BISQUE DOME SHOULDER HEAD GERMAN FASHION, CM, blue glass eyes, PE (nick), beautiful red dress & bonnet, blonde mohair wig, kid body, bisque arms, (broken thumb right hand), (left eye corner fleck)	250
63	13 ½” BISQUE BELTON-TYPE, marked 183, large opening on top of head, blonde mohair wig, (hairline & chip), brown glass eyes, O/C Mouth, PE, BJCB, early brown dress	300
64	LOT OF DOLL CLOTHES, FRENCH TYPE SILK DRESS & BONNET for an approximately 17” doll, & early cotton dresses	250

65	18" STEINER GIGOTEUR, OPEN MOUTH , 2 rows of teeth, blue glass eyes, works sporadically, blonde mohair wig, beige/red outfit	800
66	15" EARLY PAPER MACHE DOLL , black pupiless eyes, very early clothes, hat and shoes, wood body, cloth arms, braided red mohair wig, (facial rubs)	300
67	9 ½" AM 323 GOOGLY , blue side glancing glass sleep eyes, CM, appears all original, (right hand finger repair), (right ear tiny line)	400
68	LOT OF 2 BEARS, 20" ANTIQUE MOHAIR BEAR , 13" Steiff mohair bear with button & tag (wear 1 replaced right paw pad)	200
69	LOT OF 2 MOHAIR COWS , 13" long with pull string (missing udder) and 15" long with bell	200
70	3 ½" EARLY ROUND PANTRY BOX , carved flower in lid, initials JF on base, great patina	100
71	LOT- 3 WOOD ITEMS , 6" oval paint-decorated Shaker box, early 15" x 5" hanging wall spool holder with pin cushion, & 4" wood hour glass timer	100
72	21" EARLY CLOTH DOLL WITH OIL PAINTED FACE and beautiful costume & hat	300
73	27" EARLY MOLDED FACE CLOTH DOLL , oil painted features, applied ears, separate fingers. blue dress, (facial & neck wear)	200
74	BOX LOT OF 8 EARLY DRESSES and one bonnet	300
75	LOT OF 3 – 23" PAPER MACHE/GREINER DOLLS , painted features, sculpted hair, cloth bodies, early clothes, 2 have labels	300
76	BOX LOT DOLL CLOTHES & 8 PAIR OF GERMAN doll shoes	300
77	BOX LOT OF ASSORTED EARLY DOLL clothes	300
78	19" CHASE BOY WITH GLASSES, PAINTED FEATURES , oil cloth body, brown cape	250
79	BOX LOT MINIATURES, FURNITURE, BASKETS, etc., & Box lot of small size antique doll clothes	200
80	TRUNK FULL OF 12+ DRESSES & ACCESSORIES for a approx. 9" doll	200



065



066



067



068



069



070



071



072



073



074



075



076



077



078



079



080

Absentee Auction - July 8 - 16, 2020
Withington Auction, Inc. {13} 17 Atwood Rd. Hillsboro, NH



081



082



083



084



085



086



087



088



089



090



091



092



093



094



095



096

Absentee Auction - July 8 - 16, 2020
Withington Auction, Inc. {14} 17 Atwood Rd. Hillsboro, NH

81	BOX LOT OF EARLY DRESSES, hats, purses	200
82	BOX LOT, MONKEY, EARLY SUEDE BOOTIES, whites, golliwog, carved bone pin, tiny wooden, etc.	100
83	BOX LOT OF 14 EARLY DOLL HATS	200
84	2 – CLOTH DOLLS, 14” BABYLAND RAG DOLL, painted features, cloth body, pink/white dress, & 14” Whimpy Comic character “Callage Indian” 1920’s, all cloth, original clothes (nose tear)	200
85	BOX LOT OF 10+ HATS AND 1 STRAW PURSE	150
86	FRENCH FASHION ACCESSORY LOT, gloves, bonnets, satchel, purses, socks, & Large lot of doll house miniatures, glassware, baskets, paintings etc.	300
87	LOT OF SEVEN EARLY CHILD’S DRESSES	200
88	5 – EARLY CLOTH DOLL BOTTLE BABIES approx. 13” tall & 1 – black hair china door stop 10” tall	150
89	32” LONG PAINTED ANGLED ROOM BOX WITH UPPER SHELVES, 9 pieces of assorted furniture, 3 small black haired china dolls, etc.	250
90	LOT OF EARLY ASSORTED CHRISTMAS ornaments	100
91	LOT OF EARLY ASSORTED CHRISTMAS ornaments	100
92	LOT OF ASSORTED ROOM BOX miniatures, 35+ items	150
93	TWIN EARLY WAX DOLLS 19”, GLASS INSET EYES, leather and cloth bodies, (facial & shoulder plate cracks), early clothing	150
94	LOT OF 7+ DOLL DRESSES, French and German	100
95	26” LONG GERMAN KITCHEN ROOM BOX with assorted furnishings	250
96	13” BISQUE SHOULDER HEAD DOLL with 3 additional outfits, pierced ears brown sleep eyes, mohair wig, kid body (as is), & accessories	150

- 97 20" BISQUE 168 SONNEBERG GERMAN DOLL**, CM, blue paper weight eyes, brown mohair wig, BJCB, blue check dress, from Dolores Smith collection **300**
- 98 12" BISQUE BELTON TYPE 117**, blue glass paperweight eyes, blonde mohair wig, BJCB, white dress **400**
- 99 LARGE LOT OF KITCHEN ROOM BOX MINIATURES**, 45+ items **250**
- 100 9.5" S&H DEP 1079, BROWN SLEEP EYES**, OM, blonde mohair wig, straight wrist compo body, French shoes, white dress, (excess eye & mouth plaster from eye reset) **250**
- 101 19" RED STAMP TETE JUMEAU**, OM with teeth, French bjcb, blue paper weight eyes, blonde mohair wig, PE, green outfit, (hairline center forehead) **500**
- 102 11" BRU FASHION 0, BLUE GLASS EYES**, PE, CM, swivel neck, blonde braided mohair wig, kid body, w/small suitcase (Dolores Smith collection) **1500**
- 103 15" GERMAN DOLL MARKED 189**, CM, blue paperweight eyes, blonde mohair wig, straight wrist compo body, wonderful antique dress and shoes from the Dolores Smith collection **500**
- 104 11" FRENCH BEBE INCISED PARIS**, blue paperweight eyes, CM, PE, BJCB, (hairline above left ear, pock mark by left ear, right ear lobe makers defect) wonderfully dressed from the Dolores Smith collection **400**
- 105 13" BISQUE PREMIER JUMEAU**, blue paperweight eye, blonde mohair wig, CM, PE, early Jumeau bjcb, possible original dress/bonnet, (long hairline forehead & dimple) **400**
- 106 13" FLANGE NECK BISQUE HEAD KEWPIE** on mohair jointed body, head restoration **100**
- 107 18" BISQUE CUP AND SAUCER FRENCH FASHION**, CM, (repair back of neck), blue glass eyes, kid body, green dress **500**
- 108 15" BISQUE SOLID DOME SHOULDER HEAD**, GK, blue paperweight eyes, cloth body, bisque lower arms, blonde mohair wig, blue dress, no shoes **300**
- 109 20" BISQUE FRENCH FASHION**, swivel neck, blue paperweight eyes, PE, blonde mohair wig, kid body, (replaced lower arms), nicely dressed in white **600**
- 110 13" FRENCH FASHION**, chip & hairline back of head, split lower legs, swivel head, blue paperweight eyes, CM, blonde mohair wig, kid body (as is) **400**
- 111 15" JOANNE JENKINS ARTIST BRU**, brown glass eyes, BJCB, CM, PE, nicely dressed in red **150**
- 112 LARGE LOT OF LOVELY ANTIQUE doll clothes** **200**



097



098



099



100



101



102



103



104



105



106



107



108



109



110



111



112

Absentee Auction - July 8 - 16, 2020
Withington Auction, Inc. { 17 } 17 Atwood Rd. Hillsboro, NH



113



114



115



116



117



118



119



120



121



122



123



124



125



126



127



128

Absentee Auction - July 8 - 16, 2020
Withington Auction, Inc. {18} 17 Atwood Rd. Hillsboro, NH

113	LARGE LOT OF LOVELY ANTIQUE doll clothes	200
114	LOT OF ANTIQUE doll hats	200
115	LARGE LOT OF BONNETS, APRONS, FABRICS 19th century prints	200
116	18" PARIAN SHOULDER HEAD , painted features, Café au lait hair with braid & rose in center top of head, PE, CM, ruffled collar with ribbon candy trim, cloth body, parian arms & legs, silver luster boots, blue two piece dress	400
117	25" PARIAN S/H painted features, PE, CM, blonde sculpted hair, cloth body with leather arms, early purple/rose outfit, (hairline to shoulder plate)	300
118	23" PARIAN SHOULDER HEAD , painted features, PE, CM, sculpted blonde hair, cloth body, leather arms (replaced), early white flower dress, leather boots, (mold imperfection under right eye)	400
119	15" PARIAN SHOULDER HEAD , painted features, CM, sculpted blond hair, cloth body with bisque arms, off white dress (melting)	300
120	19 ½" PARIAN S/H painted features, CM, PE, café au lait hair with magenta bow & ribbons, blue ribbon shoulder trim (faint firing lines in ribbon folds), cloth body with parian arms & blue luster boots, probably Dornheim, Koch, & Fischer	400
121	18 ½" PARIAN SHOULDER HEAD , painted features, CM, PE, sculpted blonde hair, cloth body with bisque arms & legs, painted black boots (faint hairline left bottom shoulder plate)	250
122	21" BLACK HAIR CHINA SHOULDER HEAD , painted features, CM, PE, black curls & bun hairdo, cloth body (replaced) with china hands & feet, blue luster boots, black dress, (numerous tiny pock marks in china)	200
123	24" PARIAN SHOULDER HEAD "EMPRESS EUGENIA" , blonde molded snood, painted features, cloth body (original there but recovered), bisque hands & feet, early black flower dress, (2 tiny pock marks on face)	300
124	7" BISQUE GOOGLY PM 255 , side glancing blue sleep eyes, CM, brown mohair wig, bent limb compo body (split), white dress	300
125	21" PARIAN S/H painted features, CM, PE, blonde sculpted & braided hair, molded yoke, cloth body (replaced leather arms), black dress, leather boots	250
126	21" BISQUE HEAD NOVELTY DOLL , metal body & legs, compo arms, French Limoge head (hairline back of head), blue cape, definitely one of a kind	100
127	28" BLACK HAIR CHINA WITH GOLD BAND & SNOOD , painted features, CM, cloth body, replaced leather arms, red dress	200
128	9 ½" MECHANICAL CHINA SHOULDER HEAD WIND UP walking doll on wheels, black hair china, painted features, metal arms, made in Germany	150

129 14" BLOND HAIR PARIAN SHOULDER HEAD , painted features, black ribbon in hair, cloth body with bisque limbs (right hand thumb broken), early white dress, yellow leather boots	200
130 19" BLACK HAIR CHINA S/H, w/ GOLD SNOOD , painted features, cloth body, china limbs (as-is fingers right hand), painted black shoes, early dress	200
131 18" PARIAN SHOULDER HEAD, BLONDE SCULPTED HAIR with black & gold snood (chip), painted features, cloth body with kid arms, molded blouse with blue ribbon (chip), early beige dress	200
132 18" BLACK SPILL CURL CHINA SHOULDER HEAD , painted features, cloth body, china arms, green dress	200
133 18" PARIAN SHOULDER HEAD, LIGHT BROWN SCULPTED HAIR with low bun & blue ribbon drape with flowers (chip), cloth body, parian hands & feet blue shoes, painted features, peach dress	400
134 19 ½" BLACK HAIR CHINA WITH 9 SAUSAGE CURLS , painted features, cloth body, china arms & legs (tow right hands), green painted boots, early outfit	150
135 15 ½" BLACK HAIR PARIAN SHOULDER HEAD , sculpted curls with gold headband, painted features, PE, bisque arms & legs, painted black boots, early red dress, (half of shoulder plate replaced)	100
136 17" BLOND HAIR PARIAN SHOULDER HEAD , blue glass eyes, CM, PE, sculpted hair with black ribbon, bisque limbs (left arm repair, left foot missing), molded blouse, early white dress	250
137 19" PARIAN BOY SHOULDER HEAD , sculpted blonde hair with side part, painted features, molded yoke with shirt, kid body, bisque arms, black wool suit	200
138 23" PARIAN SHOULDER HEAD , sculpted elaborate honey hair, painted features, molded blouse, cloth body, kid arms (replaced), marked French shoes, early outfit, (tiny nick on nose)	200
139 21" MORNING GLORY CHINA, DARK BROWN HAIR with molded flowers, painted features, cloth body with bisque limbs, painted black shoes, (professional restoration to neck/shoulder plate), white dress	1000
140 LOT OF ACCESSORIES, FUR MUFF & CAPE , hats, & 2 outfits	100
141 LARGE LOT 31 SMALL ASSORTED ALL BISQUE DOLLS 1 ½" – 3 ½" tall, dressed & undressed	200
142 LOT OF 9 DOLL HOUSE DOLLS 4 ½" – 6 ½" tall, various costumes	250
143 24" PARIAN S/H, "PRINCESS AUGUSTA VICTORIA" , sculpted blonde hair with black bead molded headband, painted features, PE, cloth body, leather arms (replaced), early white dress with black trim, leather boots, molded blouse	300
144 20" BLACK HAIR HIGH BROW CHINA SHOULDER HEAD , center part, painted features, cloth body, leather arms (replaced), white dress with black trim, (cracked shoulder plate)	200



129



130



131



132



133



134



135



136



137



138



139 - NO PIC



140



141



142



143



144



145



146



147



148



149



150



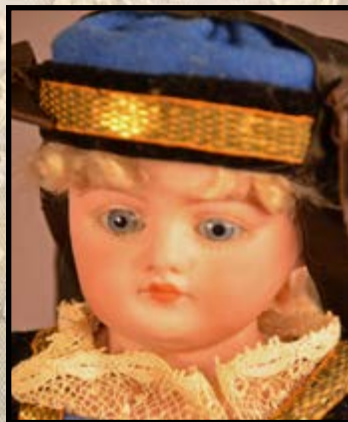
151



152



153



154



155



156



157



158



159



160

Absentee Auction - July 8 - 16, 2020
Withington Auction, Inc. {22} 17 Atwood Rd. Hillsboro, NH

145	LOT OF 7 DOLL HOUSE DOLLS 6" – 7 ½" TALL , various costumes	200
146	18" PARIAN S/H, MOLDED BLONDE HAIR & BODICE with blue ribbon, cloth body with bisque limbs, P.E., pink painted lace boots, red dress	200
147	LOT OF 4 SMALL ALL BISQUE DOLLS, 3 ½" – 5 ½" , Glass eyes, CM, painted shoes, assorted outfits	300
148	23" PARIAN S/H, BLONDE SCULPTED HAIR , painted features, PE, molded collar with blue bow, cloth body with leather arms, early blue silk dress	200
149	LOT OF 6 DOLL HOUSE DOLLS 6 ½" – 7" TALL , various costumes	250
150	LOT OF 6 CHINA DOLLS: 4 BLACK HAIR SHOULDER HEADS only 3" – 8" tall, & 2 china half dolls	150
151	19" PARIAN SHOULDER HEAD, PAINTED FEATURES , blonde sculpted hair with flowers & leaves, gold beaded necklace, cloth body with leather arms, sewn on leather boots, blue velvet dress	250
152	LOT OF 5 DOLL HOUSE DOLLS, 5 ½" – 8" tall , various outfits, 4 parian head, 1 bisque head	200
153	24" E12J DEPOSE JUMEAU , brown glass eyes, CM, PE (left ear in making line) Jumeau blue stamp straight wrist compo body, (facial rubs, finger wear), brown mohair wig, yellow dress	1800
154	11 ½" BISQUE SHOULDER HEAD 950 , blue glass eyes, CM, PE, blonde braided mohair wig, cloth body with bisque arms, regional outfit	250
155	13" BISQUE KESTNER 7 SWIVEL NECK , brown glass sleep eyes, O/CM, kid body, bisque arms (1 broken finger right hand), blonde mohair wig,	600
156	12" BISQUE KESTNER 143, BROWN GLASS SLEEP EYES , OM with teeth, blonde mohair wig, BJCB, yellow stripe dress	250
157	10 ½" BISQUE S&H 1079 DEP , blue glass sleep eyes, OM w/teeth, blonde mohair wig, PE, BJCB (right forearm missing a piece, regional outfit	250
158	18" BISQUE FASHION 10, SWIVEL NECK , brown glass sleep eyes, O/CM with teeth, blonde mohair wig, (tiny fleck left eye), kid body (arm patches), maroon outfit, high leather boots	800
159	21" BISQUE KESTNER 143 , brown glass sleep eyes, OM w/teeth, brown mohair wig, BJCB, yellow dress, (left chin rub)	250
160	23" BISQUE 192, BLUE GLASS EYES (MADE FIXED) , CM, PE, red mohair wig, (forehead hairline), straight wrist compo body, yellow dress	300

161	14" BISQUE KESTNER 167, OM WITH TEETH , brown glass sleep eyes, blonde mohair wig, BJCB, red dot dress,	250
162	12 ½" BISQUE BELTON, BLUE GLASS EYES , CM, PE, blonde mohair wig, straight wrist compo body, blue dot dress	350
163	13 ½" BISQUE SFBJ PARIS 4 , blue glass sleep eyes, OM with teeth, PE, BJCB, brown mohair wig, beige floral dress, (right eye chip)	250
164	29" BISQUE KESTNER 171 , brown glass sleep eyes, OM with teeth, blonde HH wig, BJCB (needs stringing), white dress	250
165	25" BISQUE WALKURE 15 , Brown glass sleep eyes, OM with teeth, PE, red mohair wig, BJCB, off white dress, (eyes need to be re-set)	300
166	20" BISQUE DEPOSE TETE JUMEAU 9 (red Mk.), blue glass eyes, CM, PE, blonde mohair wig, blue stamp Jumeau compo body, green dress (melting)	1200
167	16" BISQUE KESTNER, BLUE GLASS SLEEP EYES , OM with teeth, blonde mohair wig, BJCB, white dress, (right eye fleck)	250
168	15" BISQUE GERMANY 0 1/2 , blue glass eyes, OM with teeth, PE, blonde mohair wig (glued down), BJCB, off white dress	300
169	19" BISQUE JDK 214 , brown glass eyes, open mouth with teeth, brown mohair wig, BJCB, USN blue sailor suit	400
170	16" BISQUE KESTNER 167 , brown glass sleep eyes, OM with teeth, blonde mohair wig, BJCB, yellow dress	250
171	19 ½" BISQUE SIMON HALBIG , Handwerck, brown glass sleep eyes, OM with teeth, PE, brown mohair wig, BJCB, off with dress	200
172	ELABORATE WICKER CARRIAGE 36" LONG , 28" tall, tufted interior, wood wheels with metal rims, (2 detached pieces)	150
173	16" BISQUE KESTNER 128 , brown glass sleep eyes, CM, blonde mohair wig, BJCB, white dress	300
174	18" BISQUE SIMON & HALBIG 1039 , blue glass eyes, OM with teeth, PE, blonde mohair wig, compo walking body, (major repair to forehead), white dress	100
175	17" BISQUE EDEN BEBE , blue glass eyes, CM, PE, blonde mohair wig, straight wrist compo body, maroon dress, (tiny dark spot on lip, tiny facial rubs)	750
176	9" HALF DOLL PINCUSHION , open arms holding purple flower, sculpted hair with bun	100



161



162



163



164



165



166



167



168



169



170



171



172



173



174



175



176

Absentee Auction - July 8 - 16, 2020
Withington Auction, Inc. { 25 } 17 Atwood Rd. Hillsboro, NH



177



178



179



180



181



182



183



184



185



186



187



188



189



190



191



192

Absentee Auction - July 8 - 16, 2020
Withington Auction, Inc. {26} 17 Atwood Rd. Hillsboro, NH

- 177 15 ½" BISQUE DEPOSE TETE JUMEAU (RED MK.),** blue glass eyes, CM, PE, blonde mohair wig, (hairline over rt. eye), blue stamp Jumeau compo body **500**
- 178 26" BISQUE MASCOTTE BY MAYS FRERES & CIE,** blue glass eyes, CM, PE, blonde mohair wig, wood jointed body, blue dress, (excess wig rim glue) **1000**
- 179 18 ½" BISQUE 300/9 BAHR & PROSCHILD,** brown glass eyes, OM with teeth, PE, BJCB, green cape **250**
- 180 18 ½" BISQUE SFBJ PARIS,** blue glass sleep eyes, OM with teeth, brown mohair wig, BJCB, off white coat, (right eye corner fleck) **250**
- 181 17 ½" K*R SIMON HALBIG 117 N,** brown glass flirty eyes, OM w/ teeth, mohair wig, BCJB, off white dress, (tiny dark fleck by left corner of mouth) **400**
- 182 21" BISQUE S&H 1079 DEP,** blue glass sleep eyes, OM with teeth, PE, blonde mohair wig, BJCB, white dress **200**
- 183 20" BISQUE SIMON & HALBIG 540,** brown glass sleep eyes, OM with teeth, blonde mohair wig, BJCB, white dress **150**
- 184 19" BISQUE JDK 214,** brown glass sleep eyes, OM with teeth, blonde mohair wig, BJCB, pink dress **200**
- 185 25" BISQUE S&H 1079 DEP,** blue glass sleep eyes, OM with teeth, PE, brown mohair wig, BJCB, blue stripe dress **200**
- 186 21" BISQUE 282 KLEY & HAHN,** brown glass sleep eyes, OM with teeth, Blonde mohair wig, BJCB, off white dress **150**
- 187 20" BISQUE KESTNER 168,** brown glass sleep eyes, OM with teeth, blonde mohair wig, BJCB (right forearm split), pink dress **200**
- 188 25" BISQUE SIMON & HALBIG DEP 1079,** blue glass sleep eyes, OM with teeth, brown mohair wig, BJCB, white dress **200**
- 189 17" FRENCH FASHION SIMONNE TYPE,** blue glass eyes, CM, blonde mohair wig, kid body, brown stripe walking suit, (in manufacturing 3/8" line right side rim & discoloration mark lower left eye) **1500**
- 190 12 ½" BEBE BRU TETEUR,** blue glass eyes, nursing mouth mechanism , PE, blonde mohair wig, kid body with bisque hands, blue dress, (black dot ridge of nose), with original box & labels **1500**
- 191 13" BRU FRENCH FASHION,** blue glass eyes, CM, PE, blonde mohair wig, kid body with wood arms, faded pink dress, (in manufacture 3/8" line at rim above left ear) **1500**
- 192 16" FRENCH FASHION INCISED J(SYMBOL)M (MOTHREAU),** blue glass eyes, CM. PE (right nick), straight wrist French compo body, skin wig (not removed), dark brown suit **3000**

370	LOT OF 9 ASSORTED SMALL PETIPOINT, needlepoint, & bead, purses	100
371	13 GOLD & GOLD PLATE ASSORTED THIMBLES & 1 thimble case	150
372	LOT OF ASSORTED SEWING ITEMS, PIN CUSHIONS, ivory tape measure, shell thimble holder, enamel boxes, & 20+ thimbles	150
373	LOT OF ASSORTED SEWING ITEMS, LEATHER COVERED BOX with tools, 2 - small wood lift top boxes, silver egg with tools (dent in side), seated bench spool holder with modern doll & baby	100
374	FRANKLIN MINT "ROSE – TITANIC" portrait doll & 12 outfits MIB	200
375	LOT OF ASSORTED DOLL HATS & HAT STANDS by Sylvia Macneil	200
376	FRANKLIN MINT "DIANA" WARDROBE, DOLL, & 5 MIB accessories	200
377	12" FRENCH FASHION SWIVEL NECK, blue glass eyes, CM, PE, blonde mohair wig, kid body, green stripe dress, with dome lift top trunk & accessories	1000
378	18" "GENVIEVE" BRU FASHION C SWIVEL NECK, blue glass eyes, CM, PE, red mohair wig, kid body, bisque arms (3 broken fingers on each hand), (left eye corner roughness), burgundy dress	1000
379	18" PORTRAIT JUMEAU "GABRIELLA" SWIVEL NECK, blue glass eyes, CM, PE, blonde mohair wig, kid body (patches), white dress	1000
380	16 ½" FRENCH FASHION 4 SWIVEL NECK, blue glass eyes, CM, PE, red mohair wig, kid body with bisque arms, white/yellow dress, with parasol, (hairline over left eye to rim)	500
381	20" FRENCH FASHION SWIVEL NECK 5 (FG), blue glass eyes, CM, PE, blonde mohair wig, kid body (replaced kid arms), black dress, (tiny rough spot left side of nose), black dress	600
382	18" FRENCH FASHION SWIVEL NECK "JULIETTE", blue glass eyes, CM, PE, blonde mohair wig, kid over WOOD BODY, bisque arms, early green dress (melting) (major cracks repaired to back of head), with additional 4 outfits	500
383	18" FRENCH FASHION SWIVEL NECK "LISETTE", blue glass eyes, CM, PE, blonde mohair wig, WOOD BODY with bisque arms, bittersweet silk walking suit, (2 black specs left side above lips, 2 small in making pock marks above left eye) with 2 additional outfits/hats, & trunk with assorted outfits	1200
384	2 – BOXES OF ASSORTED CLOTHING FOR FRENCH FASHION dolls	400
385	LOT OF DOLL EARRINGS, JEWELRY, STANHOPE, PINS, cameos, & fashion accessories	300



370



371



372



373



374



375



376



377



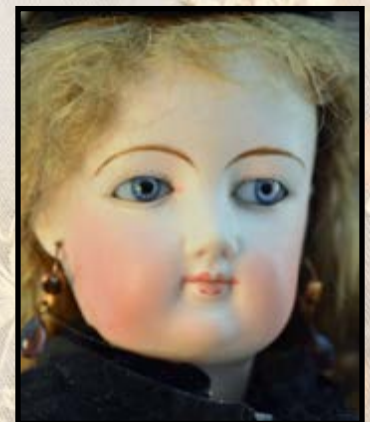
378



379



380



381



382



383



384



385

Absentee Auction - July 8 - 16, 2020
Withington Auction, Inc. {29} 17 Atwood Rd. Hillsboro, NH



386



387



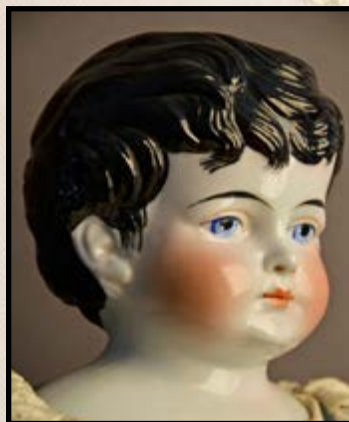
388



389



390



391



392



393



394



395



396



397



398



399



400



401

Absentee Auction - July 8 - 16, 2020
Withington Auction, Inc. { 30 } 17 Atwood Rd. Hillsboro, NH

386 LOT OF DOLL FASHION ACCESSORIES , muffs (1 Huret? Muff in green box), parasols, gloves, & perfumes	300
387 LOT OF FASHION ACCESSORIES , fans, mirrors, enamel pins, pins, buttons	250
388 13" FRENCH FASHION 1 SWIVEL NECK , blue glass eyes, CM, PE, red mohair wig, kid body, white dress (left PE nick)	600
389 LOT OF SEWING SPOOLS , doll accessories, & small all bisque doll	250
390 10" DOME TOP TRUNK with fashion accessories	250
391 21" BLACK HAIR CHINA BOY , sculpted black hair with brush strokes painted features, cloth body with leather arms, blue outfit	150
392 21" BLACK HAIR CURLY/SPILL TOP CHINA , black sculpted curls to points with brush strokes, painted features, cloth body with china arms, blue dress, (tiny chip on 1 curl)	200
393 19 ½" BLACK HAIR CHINA, MARY TODD LINCOLN-STYLE , snood with gold highlights, center part, cloth body (replaced), china arms & legs, black painted boots, (left leg repair, small area of paint loss right side snood), pink floral dress	200
394 23 ½" BLONDE HAIR CHINA "MABEL" , painted features, cloth body, leather arms, red cloth boots, olive/orange dress	100
395 22" BLACK HAIR CHINA , sculpted hair, blue molded necklace, painted features, cloth body with leather arms, leather boots, pink/white dress	200
396 21" BLONDE HAIR CHINA , painted features, sculpted blonde hair, cloth body, china arms & legs, brown painted boots, brown dress	150
397 21" DOLLY MADISON-TYPE CHINA , black, sculpted hair, painted features, cloth body, leather arms (replaced), (tiny black spec nose), brown dress	150
398 14" BLACK HAIR CHINA, SCULPTED HAIR WITH BUN , painted features, kid body, PE, early white dress with black lace trim, blue bead necklace	200
399 2 – BLACK HAIR CHINA DOLLS , 13" center part, painted features, cloth body, china arms & legs, green dress, & 15" spill curls, painted features, cloth body, china arms & legs, green dress	200
400 19" PARIAN SHOULDER HEAD , sculpted blonde hair with ringlets, blue glass eyes, CM, PE, cloth body with leather arms, sewn on black leather boots, white floral dress, (left ear inside firing line)	250
401 3 – PCS. DOLL FURNITURE , 16" tall mirrored door, single drawer cabinet, 10" tall 4 drawer swell front bureau, & 12" tall writing desk with side drawers	250

402	LOT OF 2 – VICTORIAN BLACK VELVET BUTTON HIGH BOOTS, & maroon French Fashion walking suit	200
403	LOT OF VINTAGE DOLL CLOTHING & outfits	250
404	BOX LOT OF EARLY FABRIC and partial dresses	150
405	BOX LOT OF EARLY FABRIC and partial dresses	150
406	LOT OF 6 ASSORTED 1800’S LADIES bodices/blouses	250
407	LOT OF 6 ASSORTED 1800’S LADIES BODICES/blouses	250
408	LOT OF 6 ASSORTED 1800’S LADIES BODICES/blouses	250
409	LOT OF 9 ASSORTED 1800’S LADIES BODICES/blouses	200
410	LOT OF 5 ASSORTED 1800’S ladies dresses	200
411	LOT OF ASSORTED DOLL FASHION SMALLS, clothing, etc.	250
412	5” ALL BISQUE, BLUE GLASS EYES, CM, blonde braided mohair wig, black painted 4 strap boots, in wood box	200
413	LOT OF 2 PARIANS, 16” BLONDE SCULPTED HAIR, painted features, CM, cloth body, bisque arms & legs, floral painted shoes (face rubs), & blonde hair parian kit, shoulder head, arms, legs, (no body) (shoulder plate repair)	150
414	2 – 20” x 24” GOLD LEAF FRAMED LITHOS OF LADIES, 1 signed Sydney E Wilson, 1 signed ??	100
415	17 ½” TALL SCHOENHUT WHITE KITCHEN CABINET Hosier style	300
416	LOT OF ASSORTED ROOM BOX miniatures 30+ pieces	150
417	LARGE LOT OF ASSORTED SMALLS/MINIATURES in showcase	200



402



403



404



405



406



407



408



409



410



411



412



413



414



415



416



417

Absentee Auction - July 8 - 16, 2020
Withington Auction, Inc. {33} 17 Atwood Rd. Hillsboro, NH



418



419



420



421



422



423



424



425



426



427



428



429



430



431



432



433

Absentee Auction - July 8 - 16, 2020
Withington Auction, Inc. { 34 } 17 Atwood Rd. Hillsboro, NH

418	LOT OF ASSORTED EARLY SMALLS , lighting devices, china, etc.	150
419	LOT OF MINIATURE EARLY AMERICAN METAL LIGHTING reproductions, etc.	150
420	LOT OF 24 BLUE TRANSFER WARE MINIATURE CHINA PLATES , saucers, tureens, gravy, platters, etc., back stamped Mackwood, 2 $\frac{3}{4}$ " – 5", (two platter with cracks)	100
421	LARGE LOT OF PAPER DOLLS, POSTCARDS , advertising, etc.	100
422	LOT OF 4 – FRAMED SAMPLERS, 5" x 7" ALICE REGNIER , 7 $\frac{1}{2}$ " x 9 $\frac{1}{2}$ " Family Register, 9 $\frac{1}{2}$ " x 12 $\frac{1}{4}$ " ABC, & 15 $\frac{1}{2}$ " x 18" Sarah White (not completed)	200
423	BOX LOT OF ASSORTED EARLY SMALLS/miniatures	200
424	BOX LOT OF ASSORTED EARLY SMALLS/miniatures , etc.	200
425	BOX LOT OF ASSORTED SMALLS/MINIATURES , etc.	200
426	3 – MOHAIR TEDDY BEARS , 15" gold, heavy wear to mohair, button eyes, wear to nose stitching, 7" gold humpback, heavy wear, & 13" gold, heavy wear	200
427	LOT OF CHRISTMAS ITEMS , 12" German bisque head candy container in white fur, 2 small feather trees, 7 small Santas/Elfs, & assorted ornaments	200
428	19" PAPER MACHE SOLDIER IN ORIGINAL OUTFIT , painted features, (wear to fingers)	150
429	18" WAX SHOULDER HEAD , blue glass eyes, PE, CM, blonde mohair wig, cloth body, painted boots, satin white dress	150
430	LOT OF MINIATURE COOK STOVE , corner cupboard, table, etc.	100
431	LOT OF ASSORTED CHINA MINIATURES , etc., some blue onion pattern	100
432	33" LONG ROOM BOX WITH MISC. furniture & smalls	200
433	LOT OF 5 PIECES OF ANTIQUE MINIATURE FURNITURE , slant front desk, low boy, Chippendale chair, table, & sofa	150

- 434 LOT OF GLASSWARE**, 2 - 7 ¾" Vaseline glass candlesticks, Vaseline glass fluid lamp 9 ½" no burner, pr 7" dark amethyst scent bottles, red glass grapes, & 2 small Staffordshire dogs **150**
- 435 25" WAX OVER COMPO S/H**, blue glass eyes, CM, blonde mohair wig, cloth body, compo limbs, (some lines in facial wax & shoulder plate) **150**
- 436 16 ½" BISQUE INCISED BTE SGD**, blue glass eyes, CM, PE, blonde mohair wig, compo body, olive dress (2 bad head hairlines & body repairs) **500**
- 437 15" BISQUE DEPOSE JUMEAU**, brown glass eyes, CM, PE, blonde mohair wig, compo body (5 broken fingers) (bad crack in forehead), blue dress **300**
- 438 26" BLACK HAIR PINK TINT CHINA SHOULDER HEAD**, painted features, brown eyes, cloth body, gold floral dress, (bad crack to shoulder plate) **200**
- 439 31" BLONDE HAIR CHINA SHOULDER HEAD**, painted features, sculpted blonde hair with gold ribbon, cloth body with leather arms, faded pink dress **150**
- 440 19" BLACK HAIR CHINA SHOULDER HEAD**, brown painted eyes, spit curl, exposed ears, CM, cloth body with china limbs, green/purple dress **200**
- 441 17" MOLDED FELT, LENCI-TYPE, PAINTED FEATURES**, felt body lavender dress **100**
- 442 PAIR OF 13" CENTER PART BLACK HAIR CHINA SHOULDER HEAD DOLLS**, painted features, cloth bodies, dressed alike **200**
- 443 24" PAPER MACHE M&S SUPERIOR 2015**, black sculpted hair, painted features, cloth body, white dress **150**
- 444 22" FRENCH FASHION, BLUE GLASS EYES**, CM, PE, blonde mohair wig, new kid body, white dress, (large repaired area to forehead) **400**
- 445 22" BISQUE 9 JUMEAU, BROWN GLASS EYES**. OM w/ teeth, P.E., red mohair wig, (poor repair to forehead crack), Jumeau compo body, (needs stringing, finger wear) **300**
- 446 11" FRENCH FASHION, BLUE GLASS EYES**, CM, PE, blonde mohair wig, kid body, white silk dress (melting) **600**
- 447 14" GLAZED CHINA, PAINTED FEATURES**, kid body, china arms, black stripe dress, (crazing cracks in china), (shoulder plate repair) **400**
- 448 18 ½" BISQUE BREVETE JUMEAU**, blue glass eyes, CM, PE, brown mohair wig, Jumeau marked compo body, (large hairlines in forehead, crack in back of head), blue/white dress **300**
- 449 16" BISQUE 5 LATE JUMEAU**, brown glass eyes, O/CM w/ teeth, PE, blonde mohair wig, BJCB (finger repairs), (right eye glass has a crack) **400**



434



435



436



437



438



439



440



441



442



443



444



445



446



447



448



449

Absentee Auction - July 8 - 16, 2020
Withington Auction, Inc. {37} 17 Atwood Rd. Hillsboro, NH



450



451



452



453



454



455



456



457



458



459



460



461



462



463



464



465

Absentee Auction - July 8 - 16, 2020
Withington Auction, Inc. { 38 } 17 Atwood Rd. Hillsboro, NH

450 16 ½" BISQUE F6G SWIVEL NECK SHOULDER HEAD , blue glass eyes, CM, PE, blond skin wig, kid body with bisque arms, shoulder plate marked FG, (right eye glass has a crack), (long crack above left ear)	400
451 LOT OF 2 – BLACK HAIR CHINA DOLLS , 22" center part hair, painted features, cloth body, china limbs, blue painted boots, brown dress, & 23" low brow, painted features, cloth body, china limbs, blue/gold dress	200
452 LOT OF 2 – BLACK HAIR CHINA DOLLS , 21 ½" pink luster, center part, painted features, cloth body, china arms, blue dress (as is), & 16 ½" center part, cloth body, china limbs, brown dress	250
453 LOT OF 2 – BLONDE HAIR PARIANS , 11 ½" sculpted curly hair w ith blue ribbon, painted features, PE, cloth body, china limbs, brown painted boots, floral dress, & 12 ½" sculpted curly hair with blue ribbon, painted features, PE, bisque limbs, lavender painted boots, cloth body	250
454 LOT OF 3 – BLONDE HAIR PARIANS , 12 ½" sculpted hair black ribbon, painted features, cloth body, bisque limbs, pink painted boots, blue dress, 10" painted features, molded blouse, cloth body, kid arms, black/ white dress, & 8 ½" painted features, cloth body, bisque limbs, white dress	250
455 LOT OF SIX DOLL HOUSE DOLLS & 1 – half doll , 6" – 8", china, bisque, parian, in various outfits	250
456 22 ½" BLACK HAIR CHINA , brown glass eyes, CM, center part curly hair, cloth body with china limbs, purple dress, (right lower eye chip)	300
457 17" BLACK HAIR PINK-TINT CHINA , painted features, cloth body, china limbs, red dress	200
458 24" BLACK HAIR CHINA , painted features, cloth body, china arms, black floral dress	150
459 2 – BLACK HAIR CHINAS , 10", ptd. features, cloth body, leather arms, & 15", painted features, cloth body, china limbs, brown dresses	200
460 15 ½" FRENCH FASHION 1, (PROBABLY 1960'S REPRO) blue glass eyes, CM, PE, red mohair wig, kid body (replaced), copper dress	100
461 11" OVAL HANNAH DAVIS BAND BOX , Jaffrey NH, circa 1830's, wallpaper covered & newspaper lined, (as found condition), great label "Warranted Nailed Band Box Made by Hannah Davis Jaffrey"	300
462 LOT OF 3 – 5" BISQUE HEAD DOLL CANDY CONTAINER , 6 ½" German paper mache shoe with bisque baby doll, & 6" tall pin cushion with bisque black baby sucking on bottle	200
463 20" PORTRAIT JUMEAU, BLUE GLASS EYES , CM, PE, blonde mohair wig, kid body, black dress (melting), (tiny fleck left corner eye), (tiny black fleck on check), (reset eyes)	1200
464 17" STEIFF FELT DOLL (LATE ISSUE) , in original box	100
465 18" SLIT HEAD WAX, BROWN GLASS EYES , CM, brown mohair wig, cloth body, kid arms, white dress, (facial cracks)	100

466	EARLY LADY'S PAISLEY DRESS/CAPE with large collar	100
467	20" LONG JOEL ELLIS 3 WHEEL CARRIAGE with fringe hood, red paint & stencil, (missing handle)	100
468	14" FIREPLACE ROOM BOX , brass fire screen, andirons, trivet holder, iron fireplace utensils	100
469	2 SMALL DISPLAY CASES WITH ASSORTED SMALL EARLY clothing & accessories	150
470	SMALL DISPLAY CASE WITH ASSORTED SMALLS , Frozen Charlottes, shoes, etc.	150
471	LARGE LOT OF ASSORTED MINIATURES & tin ware	150
472	38" RAGGEDY ANN & ANDY , Volland studio size, (wear & stains to face & clothing), single eyelash, red stripe socks with black shoes	500
473	LOT OF 8 SMALL FROZEN CHARLOTTE s 1" – 4" in early outfits	200
474	LOT- 5 MOHAIR/CLOTH ANIMALS & pull toys 4 ½" – 9" long, (wear to the dog)	100
475	15" LONG WOODEN PEDDLERS WAGON WITH ASSORTED WARES , horse pull toy, 2 small dolls	150
476	MINIATURE STORE DISPLAY WITH MUTI-DRAWERS for spices and assorted smalls, white paint	150
477	LOT OF ASSORTED EARLY SMALLS & miniatures, etc.	150
478	LARGE LOT OF POSTCARDS , advertising cards, etc.	100
479	LARGE LOT OF ASSORTED MINIATURES , smalls, etc.	150
480	LARGE LOT OF ASSORTED ALL METAL TOOTSIE Toys	150
481	EARLY CHRISTMAS ORNAMENTS , & 9 boxes of Christmas lights, icicles, & snow	100



466



467



468



469



470



471



472



473



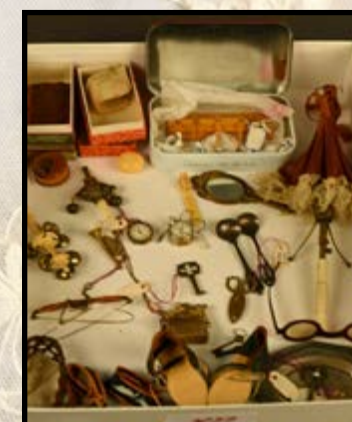
474



475



476



477



478



479



480



481

Absentee Auction - July 8 - 16, 2020
 Withington Auction, Inc. {41} 17 Atwood Rd. Hillsboro, NH



482



483



484



485



486



487



488



489



490



491



492



493



494



495



496



497

Absentee Auction - July 8 - 16, 2020
Withington Auction, Inc. {42} 17 Atwood Rd. Hillsboro, NH

482	LARGE LOT OF EARLY COUNTRY STORE CONTAINERS - Advertising Art & items for advertising displays	150
483	15" WAX SHOULDER HEAD , blue glass eyes, CM, partial hair, cloth body with leather arms, early dress (as is), (lines in face)	100
484	3 – HORSE PULL TOYS , 1 with wagon, & 1 skin covered horse, 8 ½" – 17" long, (horses as is)	200
485	LOT OF 6 CHILDREN'S BOOKS , <u>Chicken Little 1921</u> , <u>Flapsy Flopper of the Farm Yard 1925</u> , <u>Bunnies go A'Traveling</u> , <u>Kiddies Fairy Tales</u> , <u>Old Mother Hubbard</u> , & Mother Goose, with 19" wood advertising box from Dwinell Hayward & Co, Pure English Mustard, & Just Right Fine Chewing Tobacco wood handle bucket, (both as is)	150
486	LARGE LOT OF VINTAGE doll clothing	200
487	LOT OF 8 EARLY DOLL DRESSES	200
488	LOT 7 – EARLY CLOTH DOLLS , 4 with printed faces, 11" – 14" tall	200
489	3 – PCS. DEDHAM POTTERY in blue rabbit decoration, 8" diameter bowl, 4" diameter creamer, & 4" diameter bowl, bottom Dedham Pottery stamp	150
490	LOT OF MINIATURE DOLL ACCESSORIES , shoes, & children's shoes	150
491	TIN WARE LOT , 16" tin 3 burner cook stove, tin miniature coffee grinder, cookie cutters (1 early eagle), etc.	100
493	LOT OF 7 ASSORTED MOHAIR TEDDY BEARS in as found condition, 8" – 12" tall	200
494	LOT OF 4 18" RAGGEDY ANN'S & ANDY'S , 2 – pair	150
495	STACK OF 3 – ROUND PANTRY BOXES IN OLD GREEN PAINT - 8 ¼" D, 7 3/8" D, & 7 ½" D	100
496	LOT OF TIN EARLY LIGHTING & CANDLE MOLDS , 3 – 12 candle molds, 1 – 6, 1 – 2, 1-1, 2 – tin candle wall sconces, tin Betty Lamp (part missing)	150
497	LOT OF 2 - 10 ½" - PAPIER-MÂCHÉ SHOULDER HEAD DOLL , painted black eyes, closed mouth, painted black wig, carved wooden limbs, later brown printed cotton dress with blue and red cape, ht. 10 in., (crack at shoulder, missing one thumb), & 7 ½" black hair china under dome, painted features	200

- 498 LOT OF 4 – WOOD BUTTER MOLDS/STAMPS**, 3 with cow carvings, 2 7/8", 3 1/2", 4" diameter, 1 – 6 3/4" half round sheaf of wheat,, (some checks) **150**
- 499 2 – STEREOPTICON VIEWERS** and assorted view cards **100**
- 500 14 – ASSORTED HOG SCRAPE CANDLE HOLDERS** pushup/non pushup, some with brass rings, & 3 candle snuffers **200**
- 501 6 – EARLY LIGHTING DEVICES, 4 – BETTY LAMPS**, 1 – double cruise lamp, 1 – grease pan lamp, 3 – wrought iron beam lamp hooks **200**
- 502 5 – EARLY LIGHTING DEVICES**, 1 – 9" tin & iron fluid lamp, 7" pewter fluid lamp, 10" small tin lantern (1 glass cracked), 1 – 7 1/2" clear fluid lamp w/ double burne, Sandwich Glass; lacey glass base, & 3" clear fluid lamp **150**
- 503 3 – EARLY ITEMS, 2 – PIERCED TIN FOOT WARMERS** with heart decorations, & 1 – 11 1/2" rush light/candle holder on wood base **100**
- 504 LOT OF 4 MID SIZE PAINT DECORATED PANTRY BOXES**, 11 7/8" mustard, 10" green, 8 3/4" yellow, & 7 3/4" red **200**
- 505 38" L. RED HANDLED CARRIAGE** pulled by 2 gray paint horses, horses move up & down as front wheels turn (right rear leg of right horse piece missing) **100**
- 506 LOT OF 2 – CHILD'S THUMB BACK PLANK SEAT WINDSOR ARM CHAIR** in red paint (originally salmon orange) with branded makers mark OSB on plank seat bottom (Oliver Swan?), & early 16" green paint pine & maple footstool (as is) **100**
- 507 15 - PCS. OF ASSORTED SPATTERWARE**, 2 – sets peafowl cups & saucers, castle cup & saucer, rainbow waste bowl, blue sugar & tureen, etc., (all have either chips or cracks except the rainbow waste bowl) **200**
- 508 5 – PCS. YELLOW MOCHWARE WITH SEAWEED DECORATION**, 6" D bowl, 2 – 3 1/2" handled mugs, salt shaker, covered mustard, & 1 - brown stripe open salt (all have small chips, hairlines, salt has repair) **200**
- 509 11" X 17" FRAMED EARLY THEOREM (OF PANSIES?)**, (edge loss & staining) **100**
- 510 20" X 32 1/2" FRAMED WATERCOLOR OF 6 MAST SCHOONER** at full sail, (staining, small holes, tears) **150**
- 511 4 – LARGE ROUND WOOD PANTRY BOXES** in original paint, 1 - 18 1/4" in red paint, 1 – 17" blue with initials J.U. in sides & makers brand in center top (can't make it out), 1 – 14 1/2" in gray/blue, & 1 – 13" in dark green, normal wear for age **300**
- 512 2 – PCS. TREENWARE FROM ROGER BACON COLLECTION** at Skinners in 1983 lot 396 – 7 1/2" raised edge plate & lot 137 4 1/2" green & white paint bowl **150**
- 513 4 – REDWARE PLATES W/ SLIP DECORATIONS**, 12 3/4" plate w/ yellow & green slip (heavy wear), 10" plate w/ yellow deco. (split in half & repaired, 7 3/4" yellow deco. (cracks & repairs, & 9" plate (split in half & repaired) **200**



498



499



500



501



502



503



504



505



506



507



508



509



510



511



512



513

Absentee Auction - July 8 - 16, 2020
Withington Auction, Inc. { 45 } 17 Atwood Rd. Hillsboro, NH



514



515



516



517



518



519



519



520



520



521



522



523



524



525



526

Absentee Auction - July 8 - 16, 2020
 Withington Auction, Inc. {46} 17 Atwood Rd. Hillsboro, NH

514 HUMPHREY'S SPECIFICS APOTHECARY MEDICINE CABINET, 27 ½" T x 21" W - Oak case w/ inset litho tin display for Humphrey's apothecary supplies, listing the products stored in the interior drawers. On the reverse 30 small & 4 larger drawers (missing glass back door & replaced top)	200
515 3 – EXAMPLES OF IRON & WOOD EARLY LIGHTING DEVICES , floor models, wood ratchet Betty lamp holder, double adjustable candle stand, & another Betty lamp holder (not period)	200
516 LOT OF ASSORTED EARLY WOOD ITEMS , 2 – mortar & pestles, 3 – bobbins, carved spoon, 14" D bowl, 10 ½" D cutting board, 4 ¾" round pantry box (as is)	150
517 LOT OF 3 DOLL HOUSE HOOKED RUGS , sampler, early doll dress, mittens, etc.	150
518 LOT OF 5 NESTED MINIATURES WASHBOARDS 6" – 14"	100
519 4 – EARLY SAMPLERS , 1 – 11 ½" x 16" alphabet/scene Margaret Ann Havens aged 13 (not complete & holes), 1 – 7 ½" x 13" alphabet, not dated, 1 – 10" x 10" alphabet Pamela Lee aged 12 1817, 1 – 7" x 16" partial alphabet, all are framed	150
520 FRIENDSHIP QUILT SIGNED R. JANE MERRILL , Haverhill Mass & others, (some wear & staining) for 4 post bed	100
521 EARLY PATCHWORK QUILT , good overall condition	100
522 JACQUARD COVERLET , blue, brown red, & white, corner signed M. Byjohn Kachel, & John Kaufman 1861, few tiny holes	150
523 BASKET OF FLOWERS APPLIQUÉ quilt	100
524 21" BISQUE KESTNER 129 , blue glass sleep eyes, OM with teeth, blonde mohair wig, BJCB, white dress	150
525 10" BISQUE S&H 908 , blue glass eyes, OM with teeth, PE, straight wrist compo body (replaced), white dress	300
526 11" BISQUE 152?, BLUE GLASS EYES , CM, PE, blonde synthetic wig, straight wrist compo body (replaced), peach dress	150

*****The End of the Auction*****

Thank you for prticipating. If you are the successful bidder on any lots, arrangements can be made to pick up the items at the Dollhouse at 17 Atwood Road, Hillsboro, NH, or we will have the items shipped to you according to your specifications, at your expense.

Call: 603-478-3232 and we can set up an appointment.

The FINAL DOLL AUCTION OF 2020 season will be a LIVE EVENT at the Holiday Inn, in Nashuua, NH, providing that all the Covid 19 restrictions have been liftedf by then.

The anticipated date: October 14-15-16, 2020.

There is still room for some quality dolls in the October auction, call to reserve your space.

NOTES



