

WITHINGTON AUCTION, Inc.

Dolls at Auction



November 7 & 8, 2019



WITHINGTON AUCTION, Inc.

Dolls at Auction - November 6-7-8, 2019

Playing with dolls Since 1959

AUCTION SALE 2577 & 2578

PREVIEWS

DOLL SHOW & SALE

HOTEL INFO

WEB-SITE ABSENTEE BIDDING

TERMS

STAFF

CONSIGNING Your Collection

CONTACT 603-478-3232 FAX-478-3233

Thursday & Friday - November 7 & 8, 2019

Holiday Inn Nashua, NH - 603-888-1551 (for reservations)

AUCTION STARTS - 10:00 AM

November 6 - Wed. Evening: 7 - 9

November 7 - Thurs. Morning: 8 - 10 & Evening: 7 - 9pm

November 8 - Fri. Morning: 8 - 10

Nov. 6 - 1 - 6 pm *Afternoon Delight Doll Show....OPEN TO THE PUBLIC!*

3rd Floor Hotel Rooms - *Space is Limited* - Room-Selling: **BUY * SELL * TRADE**

Call at the Holiday Inn 603-888-1551 for Reservations

Buyer's & Seller's Meet 'n Greet - Night preview at 7:00pm

Holiday Inn, 9 Northeastern Blvd. Nashua, NH

Exit 4 off Everett Turnpike / Route 3 - On the west side of highway

Turn right at the light onto Northeastern Blvd.

(PETS ARE WELCOME - ASK FOR THE DOLL RATE)

Full Color Catalogue - \$15. (View Cat on-line & More photos)

ABSENTEE BIDDING & TELEPHONE BIDDING ACCEPTED -

BIDDER FORMS ARE AVAILABLE ON OUR WEB-SITE

www.withingtonauction.com For Info: Tel: (603)- 478-3232

RETURNS: All items **MUST** be inspected and returned within **10 minutes** of purchase - if not as described in catalogue. and be of \$ 100.00 valuation or more to qualify for a refund - Due to the sufficient time allowed for inspecting the dolls, The following items are sold **AS-IS**: All bodies are sold AS-IS; . All Paper Dolls; Artist Dolls; Madame Alexander dolls, non picture dolls, extras, and all Box lots (as-is). Speckling and wear are normal conditions for Bisque and China dolls, therefore it will be up to the buyer to inspect for these conditions. Items designated AS-IS are **FINAL SALES**.

15% Buyer's Premium - Discounted to 12% for Cash or Check
Visa & Mastercard accepted - No NH Sales Tax

Larry Leizure - Pres., Appraiser, Doll Specialist, Restoration Carpenter, plumber, etc. etc...

Marcia Leizure - NH Auctioneer's Lic. # 4028, Trucker, Events, Writer, Graphic Design. etc...

Bob Bouchard - Buildings & Grounds / Asst. Doll Specialist, Warehouse manager...

Barbara Scully - Asst. Auctioneer, Doll Specialist & Consultant, Social Media, events...

Mary Dominick - Photography, Chief clerk, Events team,

Linnea Steeves - Administrative Asst. Events, Archives, Organizational Specialist

Dolores Smith - June 1940 - Oct. 2018, "The Doll world will never be the same without you!"

Dick Withington 1918 - 2008 NH Lic. #1 "The Nation's Leading Doll Auctioneer"

Thinking about Selling your dolls? But don't know how to begin....

Withington's can answer your questions about the Auction process.

E-Mail photos or inventory for a free appraisal. 2020 Auctions - May 7 & Oct.??

WITHINGTON AUCTION, INC.

17 Atwood Road Hillsborough, NH 03244

E-mail: withington@conknet.com - WEB: www.withingtonauction.com

*****GREETINGS*****November 2019 FROM THE DOLLHOUSE

WITHINGTON AUCTION, Inc.

Hillsborough, NH



Yep.... *There's color in them hills.* Larry and I are crossing Vermont on scenic Route 9... over Hogback Mt. (elevation - 2,390 ft.), through Historic Wilmington... feeling like tourists' leaf-peeping, as if we didn't have enough colorful foliage in New Hampshire! A phone call from an old doll friend of Kathy Zimmerman, heard of her passing ... and of Withingtons forthcoming auction of Kathy's doll collection, asked, "Would it be possible to put some of my dolls in this auction?" *"Absolutely NOT! It's too late - the catalog is complete, and ready for the printer."* But a Circle Dot Bru and a Jumeau Portrait are hard to turn away! Coincidentally, the Shaker Doll Club Fall Show was on Saturday, in Albany NY... we could meet there... and have a working holiday. This has always been a good regional show at which Kathy always set up, and we'll have a chance to see some old friends and promote the Kathy's auction ... *and pick up some fine dolls, too!*

The doll season has been so hectic, beginning with the May auction of the legendary dolls of Dolores Smith, who had been Withington's doll specialist for the past 20 years. And now, as the 2019 season is coming to a close, we are immersed in the exceptional doll collection of Kathy Zimmerman. And if my memory serves me right, last summer we were finalizing plans to retire at the end of the 2018! I guess that's not happening any time soon. Together, the Withington auction family made the decision to simplify our lives and cut back the summer schedule of four pre-planned auction events, and instead have one or two good auctions a year. But it is said, *"Life is what happens when you're making other plans"*, and in August, Dolores' back problem was not a pinched nerve as the doctors diagnosed, but the cancer of the liver which had metastasized. The October auction was the first one that Dolores ever missed... she was too weak to attend. And she was gone by the end of October. It's been a year since her passing, and it still feels like a bad dream that we will surely wake up from. Why just yesterday Larry, Bob, Lynn and I shared one of Dolores' specialties - *Spaghetti Pie*, we fondly reminisced about how she would bring lunch to share every Monday... her spirit is still with us. We made a dozen trips to Candia, worked for months both moving her collection and cataloged and processed the dolls for many weeks. The core of Dolores' collection was comprised of a thousand lots of fine dolls... sold over two full days. I wish both Dolores and Kathy could have seen the collection in the ballroom... and experienced the auction in person, they would have been amazed! Our dear friend, Kathy passed away in May of this year, joining doll friends, Ursula and Dolores at the doll club meeting in the sky. The family said that Kathy kept the May catalog of the Dolores Smith collection on her bedside stand and requested that Withington Auction sell her collection.



They say that good things come in small packages.... and so was the case with the diminutive Kathy Zimmerman. This humorous, mischievous, enthusiastic... 5-foot tall ball-of-fire, spent the past forty years amassing a collection of dolls that could compete with many of the best collections around. I recall at a past UFDC convention, Kathy submitted many of her favorite dolls for judging in the competitive exhibits - nearly all won ribbons... and many blues among them! With her educated eye, she had the uncanny ability to find a French Fashion in a box lot of Barbies! Along the walls were many antique glass cases, from 3-sectioned Victorian cabinets to barrister's bookcases, (so wonderful for small dolls.) Upon closer look, carefully displayed within them were dozens of tiny porcelain characters: Bathing beauties, half-dolls, Chinas and Parians of the smallest size, doll house dolls, Kewpies and tiny Carl Horns in crocheted clothes, French all bisque, Frozen Charlottes in molded bonnets and more! Atop the cases, tables and sideboard were glass domes of every size and shape; holding choice, all-bisque Wrestlers, Kestners with original clothes and mohair wigs.

Selected examples included a Ballet dancer and half dolls of Dressel and Kister, Milliners Models, Papier Mache, Tuck combs and wax... Regardless of the sensory overload, it was evident that there was order to the chaos. Within the confines of the "Domes" there was a family of kindred spirits: Closed mouth characters 8 inches and under; a dozen Googlies - including Max and Moritz; the smallest China heads, Mignonettes with bare feet, Fashions and Gibson girls, too.

Kathy attended Withington Auction regularly and helped show the dolls at the auction previews. She was a hairdresser by trade but searched for other interests to engage her keen intellect, lively spirit and make some money at the same time. She discovered a few old dolls in a box lot, at a house sale, had an awakening - discovering what to do with the rest of her life. The handful of cast-off dolls became the starter seed of the outstanding collection that Withington is privileged to sell in the November auction. Kathy's doll world was broader-reaching than most...with dolls of all genres and with her artistic talents, she made mohair doll wigs, she perfected her skills of doing bisque repair, stringing and cleaning, too. The Kathy Zimmerman doll collection has evolved over the years.... as is the case with so many collectors. Sell a few lesser dolls and buy one or two good ones... of the smaller stature. Finding the tiny treasures that fit comfortably in a "cabinet" is strangely appealing as we consider "downsizing" or moving from ten rooms into a two-bedroom condo.

A two-day auction takes over three months to gather, catalog, photograph, promote and publish. However, we actually started working on this auction in April, with a collection in Maine. There was only room in August, for half the dolls, so the large and lovely Kestners were saved for November. Our Summer travels have brought us to Brooklyn, NY, a now familiar stopping place when we're in the area... "I have some really nice dolls for the auction", not enough to warrant a special trip, but could we piggyback with another pick-up. A-Hah! How about that Izannah Walker in Virginia? About half-way for both of us, the date was set. The Izannah was purchased back in the 1980's, from a well know dealer, Jennette Fink of Pennsylvania. At that time, the interest this American cloth doll was starting to skyrocket, with the excitement fueled by some recent sales for some serious money. It seems that Jennette was never going to sell her Izannah, but the allure of a 5-figure price tag, was too much to resist! Like so many times before, Withington's was chosen to present this latest undiscovered Izannah to the doll world. She comes with her trunk and wardrobe, and lots of other accoutrements, including a charming little date book dated 1877. A notation appears on the November page, "Nov 9, Mary Cordelia Talbot's birthday 15 years 1877." So, working out of the back of the van, looking like some kind of drug dealer, (dolls are addictive substances to many), we completed the transaction and secured the merchandise. Though not perfect, all original and unrestored... she is a fine example of this highly desirable doll.



Most of our doll travels have been around New England, so whenever possible I visit my beautiful mother, soon to be 98 years old and still living alone! In the mid-summer I traveled to Westfield, Mass., to pick up a few dozen dolls from a long-time collector. Her very loving and supportive husband had passed away this summer and she just wanted to get things in order. He had bought her many dolls over the years, among them an outstanding Gypsy Fashion from a renown doll dealer. She had all the receipts, *the when, where and how much for of ever one*. Her house, in a lovely older neighborhood, at 40 years old was pristine. Life and everything in it were *Just So...* and I was so in awe of her ability. I decided, then and there... that if I cut out two meals a day, cut my sleep time to three hours a night and work seven days...maybe.... Nope! There still won't be enough time in the day. Hum-m-m perhaps I should consider cloning!

In closing, we hope you enjoy this final auction of 2019. No, we are not retiring any time soon... we have already started the May 2020 auction. There are lots of Kathy Zimmerman's dolls yet to sell and I believe there are still a few boxes of Dolores dolls still in the barn. May all your doll dreams come true!

Have a Happy and Safe Winter and we'll see you in about 25 weeks!
Thank You all for your support and dedication to our auctions through out the years.
Sincerely, Marcia & Larry Leizure

November 7 & 8, 2019

Holiday Inn, 9 Northeastern Blvd. Nashua, NH - for reservations call: 603-888-1551 ask for Laurie.

Visit our Website: www.withingtonauction.com or call The Dollhouse: 603-478-3232

WITHINGTON AUCTION, Inc.
Hillsborough, NH

Marcia Leizure - NH Lic. # 4028
withington@conknet.com

* 603-478-3232 *

Larry Leizure, President
www.withingtonauction.com

November 7, 2019 - Day 1 - Picture Dolls

- 001 19" BISQUE RED LABEL DEPOSE TETE JUMEAU BTE S.G.D.G 9** (scrub mark), blue glass eyes, CM, PE, mohair wig, jointed compo body, antique pink outfit
- 002 14 ½" FRENCH FASHION INCISED E**, blue glass eyes, CM, PE, mohair wig, kid body, early outfit & shoes
- 003 18 ½" BISQUE FASHION DOME SHOULDER HEAD S&H 950**, blue glass eyes, CM, PE, mohair wig, kid body with bisque arms, purple walking suit
- 004 LOT OF NINE HALF DOLLS & pincushion dolls**
- 005 15" BISQUE SWIVEL NECK SHOULDER PLATE**, blue glass eyes, CM, PE, kid body with bisque arms, mohair wig (glued down), lavender dress
- 006 22" BLONDE HAIR PARIAN, BLUE PAINTED EYES**, sculpted hair, cloth body with leather arms (replaced), early outfit & shoes
- 007 23" BISQUE SFBJ 301 PARIS**, mechanical walker with crier, blue glass eyes (right lower eye chip, eyes need to be reset), OM with teeth, PE, mohair wig, compo body, early pink dress (melting)
- 008 WHITE COTTON DOLL DRESS WITH ROSE SILK RIBBONS & straw bonnet to fit a 26" – 28" doll**, Theriault's provenance
- 009 LOT OF 2 KESTNER BISQUE HEAD 143's**, 16" 143, blue glass sleep eyes, OM with teeth, mohair wig, BJCB, brown check dress, & 7" 143. brown glass sleep eyes, OM with teeth, mohair wig, BJCB, (wigs glued down)
- 010 11" BISQUE INCISED 222, "OUR FAIRY"**, brown glass eyes, all bisque
- 011 11" BISQUE BELTON TYPE 137**, brown glass eyes, CM, PE, BJCB, early outfit
- 012 7" BISQUE AM 253 NOBBIE KID**, blue glass sleep eyes (left eye corner fleck), water-melon mouth, painted shoes & socks, blue check outfit
- 013 17" BISQUE KESTNER X**, brown glass sleep eyes, CM, mohair wig, plaster dome, BJCB, (finger wear), brown corduroy outfit, (needs stringing)
- 014 17" WIDE HIP KATHE KRUSE**, painted features, original string tag, striped dress, purchased from Nancy Smith 1990
- 015 17" SCHOENHUT, BLUE PAINTED EYES**, jointed wood body, original shoes, white dress, (nose & upper lip rubs) Nancy Smith 1990
- 016 LOT OF 2 EARLY CLOTH DOLLS**, 16" handmade topsy-turvy in early clothing, cloth body & 17" hand made black doll, stitched features, cloth body, early clothing



001



002



003



004



005



006



007



008



009



010



011



012



013



014



015



016

Withington Auction, Inc. - Dolls at Auction - November 7th & 8th, 2019
No Inspections of Dolls { 7 } Lots after the auction begins



017



018



019



020



021



022



023



024



025



026



027



028



029



030



031



032

Withington Auction, Inc. - Dolls at Auction - November 7th & 8th, 2019
No Inspections of Dolls { 8 } Lots after the auction begins

- 017 16" BLONDE CHASE GIRL**, painted features, swirled blonde hair (wear), early blue check dress
- 018 16" BISQUE S&H 949 BELTON TYPE**, brown glass eyes (tiny right eye fleck), CM, PE, mohair wig, BJCB, early brown outfit
- 019 19" KAMKINS BOY**, painted features (wear to nose & upper lip), cloth body, mohair wig, original clothes
- 020 14 ½" BABY RAGLAND BLACK CLOTH RAG DOLL**, painted features, original outfit & bonnet
- 021 22" PAPER MACHE GREINER**, painted features, sculpted hair, cloth body with leather arms, original Greiner label 1858, early dress
- 022 16" LENCI IN RED DRESS**, painted features, felt body, original Lenci tag good condition
- 023 14 ½" DEPOSE TETE JUMEAU BTE S.G.D.G. 6 RED STAMP**, brown glass eyes, CM, PE, Jumeau marked compo body, mohair wig, nice outfit
- 024 15 ½" BIEDERMEIER CHINA**, painted features, cloth body with china hands & legs, original wig, early outfit
- 025 21" BISQUE SFBJ PARIS**, brown glass sleep eyes, OM with teeth, PE, mohair wig, BJCB (some finger damage), melting clothes
- 026 14" JUMEAU FRENCH FASHION RED MARKS XII**, brown glass eyes, CM, PE, Jumeau marked kid body, mohair wig, Gypsy outfit & dome
- 027 20" BISQUE S&H 739 DEP**, blue glass eyes, OM with teeth, mohair wig, BJCB, (slight finger damage right hand), (excess wig glue)
- 028 14" L DOME TOP STRAP TRUNK** with early doll clothes, shoes, & accessories
- 029 21" COMPO SHIRLEY TEMPLE IN ORIGINAL COWGIRL OUTFIT**, pin, & gun, great outfit
- 030 15 ½" FG FRENCH FASHION**, blue glass eyes, CM, PE, kid body, marked FG shoulder plate. Early dress & shoes
- 031 14" BISQUE MADE IN GERMANY 237 JDK BABY**, blue glass sleep eyes, OM with teeth, mohair wig, baby compo body
- 032 16" JUMEAU FRENCH FASHION 2**, blue glass eyes, CM, PE, kid body, red dress with parasol, early shoes

- 033 11" LITTLE PIG BY MADAME ALEXANDER** one of the 3 dolls, circa 1940's, (slight face rub)
- 034 30" BLONDE HAIR CHASE BOY**, molded & painted features, Chase hospital doll label under right arm, blue velvet antique suit, new shoes, (paint loss to head)
- 035 17" BISQUE TODDLER SFBJ 236 PARIS 8**, laughing smiling Jumeau face, brown glass sleep eyes, OCM with teeth, mohair wig, toddler compo body, red polka dot dress, (needs head stringing)
- 036 18 ½" BISQUE SHOULDER HEAD KESTNER**, blue glass eyes, CM, PE, mohair wig, plaster pate, kid body with leather arms, (left eyelash paint smear)
- 037 LOT OF 10 PIECES OF 19TH C COUNTRY DOLL DRESSES & cloth bonnets**
- 038 LOT OF 10 PIECES OF 19THC doll dresses**
- 039 23" CLOTH PUNCH & JUDY DOLL**, painted features, early outfit & boots, Punch & Judy book 1926, & 2 early cloth dolls with painted & stitched features in early clothing
- 040 21" FRAMED OVAL VIGNETTE BY DOLORES SMITH** of small all bisque dolls with Teddy Bear & dolls clothes
- 041 18" x 26" FRAMED OIL ON CANVAS "SEE MY LITTLE DAUGHTER"** 1888, young girl holding a doll & kitten, signed lower left S. A. Winn, craquelures crazing
- 042 8" x 10" PRESENTATION BOX** with 5 ½" all bisque mignonette doll, two outfits & accessories
- 043 11 ½" x 19 ½" FRAMED SHADOW BOX BY DOLORES SMITH** of various style doll shoes & socks
- 044 13 ¾" T x 8" W FRENCH MINIATURE BOW FRONT VITRINE**, burl with ormolu trim & legs, curved sides with glass panels, mirrored back, two glass shelves, (front door glass missing), ex Magic Closet Iris Brown Collection
- 045 11" CLOTH COVERED DOME TOP TRUNK**, with early doll clothes, hats, & accessories
- 046 22" FRAMED OVAL VIGNETTE BY DOLORES SMITH**, small Bye-lo doll & clothes
- 047 LOT OF 6 SMALL DOLL CARRIAGES**, & 8 small all bisque dolls
- 048 23" LONG SHAKER ROOM BOX WITH MINIATURE** Shaker furniture, chairs, cupboard, tables, etc.



033



034



035



036



037



038



039



040



041



042



043



044



045



046



047



048

*Withington Auction, Inc. - Dolls at Auction - November 7th & 8th, 2019
No Inspections of Dolls { 11 } Lots after the auction begins*



049



050



051



052



053



054



055



056



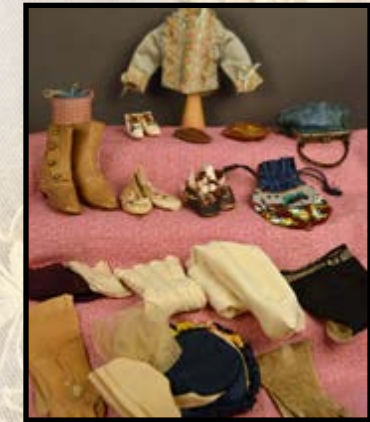
057



058



059



060



061



062



063



064

Withington Auction, Inc. - Dolls at Auction - November 7th & 8th, 2019
No Inspections of Dolls {12} Lots after the auction begins

049 3 PIECES OF CUSTOM DOLL FURNITURE, 13 ½" T 2 drawer tiger maple tapered leg stand, 18" T Chippendale flat top cabriole leg bird's eye maple/pine high boy, & 20 ½" T cherry step back cupboard

050 14" BISQUE, DEPOSE E5J, bright blue paperweight eyes, c/m, PE, Jumeau stamped body, French shoes, dressed in blue silk, (½" hairline right back of head), (finger chips left hand)

051 2 – PIECES OF EARLY MINIATURE FURNITURE, 9 ¾" L marble top 3 drawer bamboo trim bureau (replaced back board), & 14" L 3 drawer bureau, probably French, split column side decoration on short tapered legs

052 20 ½" ROOM BOX TAILORS' SHOP with 4 all bisque dolls, & a complete set up for a Victorian tailors dress shop

053 2 – VICTORIAN OVAL SHADOW BOXES, 21" Deep walnut frame with wax floral design, & 23" Deep mahogany frame with wool floral design

054 LARGE LOT OF GREAT EARLY doll clothes

055 40" T ARTIST MADE PEDDLER WOMAN/BAG LADY "GERTRUDE", carrying shopping bags with goodies, many lapel pins

056 12" T PAPER MACHE LADIES HAT MOLD WITH ORIGINAL LABEL NYRNCO HATS, with large blue hat

057 FRAMED 19 ½" X 24" OIL ON CANVAS OF LILACS & VASE, signed A. Maxam lower right corner

058 12" X 16" FRAMED VICTORIAN HAND COLORED LITHO OF MOTHER, daughter, dogs & cat, seated

059 11" X 15" FRAMED OIL ON BOARD OF GIRL WITH DOLL & CAT, probably English, 19th century, (some scuffs to surface)

060 LOT OF EARLY ASSORTED DOLL SMALLS, SHOES (1 pr Jumeau), gloves, socks, muff, hat, etc.

061 23 ½" STEIFF LION PULL TOY ON IRON WHEELS with pull roar sound

062 22" GERMAN SWIMMER FIGURINE OF GERTRUDE EDERLE in blue swimsuit standing on the rocks, (no shipping)

063 12 ½" BISQUE BOY 2048 "TOMMY TUCKER", blonde painted hair, blue glass sleep eyes, OM with teeth, BJCB, tan outfit

064 13" BISQUE SHOULDER HEAD BOY, brown glass eyes, CM, cloth body, painted shoes & socks in antique outfit

- 065 16" FRAMED OVAL NEEDLEWORK RURAL SCENE OF HOUSE**, landscape, people, ocean & ship by Eliza Bourne of Cohasset 1805 when she was 12 years old.
- 066 LOT OF BLUETTE ACCESSORIES, SCOTTY DOGS**, smalls, all bisque doll (artist doll) in antique clothing, etc. from Dolores's Bluettes display
- 067 17" SCHOENHUT CHARACTER GIRL**, original mohair wig (wear), painted features, blue eyes, CM, marked head & body labels, early outfit
- 068 14" SCHOENHUT CHARACTER BOY**, original mohair wig, painted features, blue eyes incised mark, early outfit
- 069 2 – SCHOENHUT DOLLS**, 14" character girl, orig. mohair wig, painted features, brown eyes, CM, body label, (wear to face), blue stripe dress, 11" toddler, orig. mohair wig, CM, marked head & body labels, painted features, blue eyes
- 070 13 SCHOENHUT CIRCUS ITEMS**, 2 clowns, lady rider, horse, pig, duck, 7 props
- 071 18" R. JOHN WRIGHT CHRISTOPHER ROBIN IN ORIGINAL BOX**, painted features, dressed in raincoat with umbrella, teddy bear
- 072 19" L FRENCH MECHANICAL TOY GIRL PULLING CART BY ROULLET ET DE-CAMPS**, 13" BISQUE HEAD JUMEAU INC. 2, BLUE GLASS EYES, OM TEETH, PE (PROFESSIONAL REPAIR TO RIGHT LOWER EAR LOBE), MOHAIR WIG (PATE GLUED DOWN), COMPO LEGS, HOLDING PULL CART ARMS, KEY WIND WALKING MECHANISM, WORKING, EARLY OUTFIT & SHOES, (REPLACED KEY)
- 073 12" JUST ME CHARACTER, BISQUE** socket head incised Just Me Registered Germany A 310/3/0M, blue glass sleep eyes side glancing, mohair wig, CM, compo body, (right cheek tiny rub, tiny white mark above right ear, appropriate outfit)
- 074 12" BISQUE REVALO DEP COQUETTE**, bisque head with molded hair, painted features, O/CM, compo body, (firing line right neck area)
- 075 13" BRU FACE BELTON INCISED 7**, blue glass eyes, (right eye fleck touchup), CM, PE, mohair wig, compo body, early blue dress
- 076 20" STEINER A13 LE PARISIEN BW S.G.D.G. A13**, brown glass lever eyes, OM two rows of teeth, PE (right nick), mohair wig (glue spots), French Steiner compo body, black dress, early shoes
- 077 17" IZANNAH WALKER CENTRAL FALLS, RI**, STOCKINET PRESSED HEAD, PAINTED FEATURES, BLACK/BROWN SPILL CURLS, APPLIED EARS, PAINTED BLACK LACED BOOTS W/ RED TRIM, MUSLIN BODY (POSSIBLY RECOVERED), (NOSE RUBS, WEAR SPOT TO BACK OF HEAD, LEFT HAND REPAIR, WEAR TO FACIAL FEATURES, NECK TOUCHUPS), ANTIQUE BLUE POLKA DOT DRESS, WITH EARLY TURNED LEG DOLL CHAIR WITH WORN RUSH SEAT, DOME TOP STRAP TRUNK WITH ANTIQUE CLOTHING & ACCESSORIES, PROVENANCE PURCHASED FROM JEANNETTE FINK 1984, ORIGINALLY A GIFT TO MARY CORNELIA TALBOT 1865, BORN NOV. 7 1862 IN PROVIDENCE RI. (AS NOTED IN SMALL CALENDAR & NOTES) ALSO SMALL WOOD BUCKET MADE FOR MARY TALBOT AT 1876 PHILADELPHIA CENTENNIAL
- 078 17" BISQUE TETE JUMEAU RED LABEL**, brown glass eyes, OM with teeth (1 chipped), PE, synthetic wig, white dress with bonnet, BJCB (scratches both forearms)
- 079 27" KESTNER 164**, brown glass eyes, OM with teeth, HH wig, white dress, BJCB
- 080 15" T PULL TOY AUTOMATON**, 12" bisque GK in sunburst, blue glass eyes, OM with teeth, with doll cradle on 3-wheel cart, pull cart right hand goes up & down & head turns, small china head doll in cradle



065



066



067



068



069



070



071



072



073



074



075



076



077



078



079



080

Withington Auction, Inc. - Dolls at Auction - November 7th & 8th, 2019
No Inspections of Dolls {15} Lots after the auction begins



081



082



083



084



085



086



087



088



089



090



091



092



093



094



095



096

*Withington Auction, Inc. - Dolls at Auction - November 7th & 8th, 2019
No Inspections of Dolls {16} Lots after the auction begins*

- 081 10 ½" BISQUE GOOGLY AM323**, blue glass Googly eyes, CM, compo body, white dress
- 082 8" BISQUE HEAD DOLL CANDY CONTAINER SITTING ON A SNOWBALL**, blue glass eyes, OM with teeth, bisque arms, red winter outfit
- 083 7" BISQUE 253 GOOGLY, BROWN GLASS EYES** (right eye corner chip), watermelon mouth, (hairline right top mold seam), pink coat, compo body
- 084 17" BISQUE 247 HILDA JDK**, brown glass eyes, OM with teeth, mohair wig, compo body, holding rabbit
- 085 19" SCHOENHUT GIRL, PAINTED FEATURES**, blonde mohair wig, pink dress, jointed wood body
- 086 16 ½" BISQUE 167**, brown glass sleep eyes, OM with teeth, HH wig, BJCB, white & pink dress, (rough left hand)
- 087 18" BISQUE HEUBACH 8420 CHARACTER**, blue glass sleep eyes, O/CM, mohair wig, pink dress, (3/8" hairline top left head)
- 088 LOT OF 2 GOOGLIES** – 9" Bisque AM 323, brown glass eyes, CM, dressed as white rabbit, compo body, (firing line back of head), & 7" AM 323, brown glass eyes, CM, compo body with painted shoes & socks, mohair wig, white dress mounted to a Valentine card
- 089 LOT OF 2 GOOGLIES** – 6" All bisque 217, blue glass eyes, watermelon mouth, mohair wig, painted shoes & socks, pink dress, & 9" Bisque Germany, brown glass eyes, mohair wig, compo body, pink flower dress
- 090 LOT OF 3** – Valentine presentation box with 4" all bisque doll & fur sheep in Valentine box, 6" Bisque doll dressed as a rabbit in an Easter box, & 7" wax over doll wrapped in lace in wooden lap box
- 091 19" BISQUE K*R SIMON HALBIG 117N**, blue glass eyes, OM with teeth, mohair wig, pink dress, BJCB
- 092 12" BISQUE KESTNER 6**, blue glass sleep eyes, CM, mohair wig, BJCB (right leg ball repair), white dress, 1st & 3rd place ribbons, (rough spot left side of nose)
- 093 15" BISQUE KESTNER 10**, brown glass sleep eyes, OM with teeth, mohair wig, BJCB, white dress, (right eye corner fleck)
- 094 13 ½" BISQUE 238**, blue glass sleep eyes, CM, mohair wig compo body, early brown dress, bonnet, & shoes, 1st place ribbon, (wig remains at rim)
- 095 LOT OF 4 ALL BISQUE KESTNER DOLLS 4" – 5"**, glass eyes, mohair wigs, all bisque bodies, painted shoes & socks
- 096 12" BISQUE KESTNER 7**, blue glass sleep OM with teeth, HH wig, BJCB, white dress with UFDC 3rd place ribbon

097 34" SIMON & HALBIG K*R 85, blue glass sleep eyes, OM with teeth, PE, BJCB (rough fingers), dressed in lederhosen

098 9 ½" ALL PORCELAIN BALLERINA DOLL BY DRESSEL & KISTER, jointed arms, grey/brown sculpted hair, painted features, pink painted slippers, silk & metal lace costume on pedestal stand with dome

099 12" BISQUE KESTNER 6, BLUE GLASS EYES, CM, mohair wig, BJCB, white dress with antique shoes

100 LOT OF 5 - 7 ½" EARLY MADAME ALEXANDER "ALEXANDER-KINS" in original outfits

101 19" BISQUE KESTNER, BLUE GLASS EYES, CM, mohair wig, BJCB, white dress, antique shoes

102 PAIR OF 7" BISQUE KESTNER 155 "TWINS", blue glass sleep eyes, OM with teeth, HH wig, jointed compo body (1 leg repair), in wicker chairs, no clothes, pegged shoulders

103 5" ALL BISQUE MOLDED BLONDE HAIR, painted features, jointed & pegged bisque arms & legs, with glass dome

104 LOT OF 5 - 7 ½" EARLY MADAME ALEXANDER "ALEXANDER-KINS" in original outfits

105 13 ½" STEIFF BOY, BLUE GLASS EYES, face center seam felt, original clothing (moth holes), red ribbon

106 14" WIDE HIP KATHE KRUSE, molded muslin head, painted features, (small face rubs), purple outfit

107 14" KATHE KRUSE BOY, MOLDED MUSLIN HEAD, painted features, dressed as a fisherman, 1st place ribbon, (ear rubs)

108 17" BISQUE SHOULDER HEAD, blue glass sleep eyes, O/CM, PE, mohair wig, kid body with bisque arms (1 finger repaired), antique dress & shoes

109 12" BISQUE SHOULDER HEAD, blue glass sleep eyes, CM, PE, kid body, antique white dress (melting)

110 17" BISQUE DOME SHOULDER HEAD, blue glass eyes, CM, PE, kid body with bisque arms, white dress with red dots

111 LOT OF ASSORTED ANTIQUE PURSES, & miniature trunks

112 LOT OF ASSORTED ANTIQUE clothing



097



098



099



100



101



102



103



104



105



106



107



108



109



110



111



112

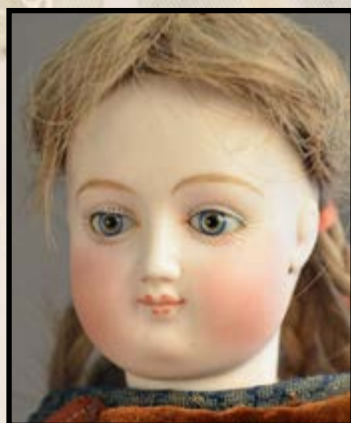
*Withington Auction, Inc. - Dolls at Auction - November 7th & 8th, 2019
No Inspections of Dolls { 19 } Lots after the auction begins*



113



114



115



116



117



118



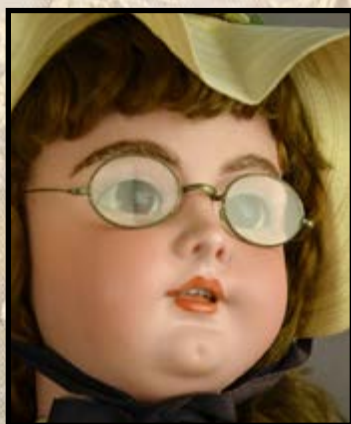
119



120



121



122



123



124



125



126



127



128

Withington Auction, Inc. - Dolls at Auction - November 7th & 8th, 2019
No Inspections of Dolls {20} Lots after the auction begins

- 113 14" BISQUE 1009 S&H**, blue glass sleep eyes, OM with teeth, PE, mohair wig, BJCB, brown dress with apron
- 114 17" BISQUE SWIVEL NECK DOME SHOULDER HEAD**, brown glass eyes, CM, PE, mohair wig, kid body with bisque arms, early maroon outfit & shoes
- 115 15 ½" FRENCH FASHION INCISED F**, blue/brown two-tone glass eyes, CM, PE, blonde wig with braids, kid body with wood jointed arms, early blue/brown outfit, no shoes
- 116 17" WAX, BLUE GLASS EYES**, CM, blonde mohair wig, cloth body, wax hands, early brown outfit, no shoes, (shoulder repair)
- 117 2 – R. JOHN WRIGHT DOLLS**, 7" "Sunshine Scootles", in original box, & 7" Flower Kewpie "Poppy " in original box
- 118 6 ASSORTED KEWPIE'S**, 2 – 8", 2 – 6", 1 – 5", 1 – 3 ½" pair, all bisque, standing, blue wings, painted features
- 119 10" BISQUE BELTON TYPE 117**, brown glass eyes, CM, PE, blonde mohair wig, compo body, rose dress with parasol
- 120 8 ½" BISQUE DOME HEAD K**, blue glass eyes, CM (tiny black spec left mouth corner), blonde mohair wig, compo body, white dress
- 121 2 – BLACK BISQUE DOLLS**, 7 ½" brown glass sleep eyes, OM with teeth, jointed compo body, (nose repair) 2nd place ribbon & 8 ½" 949, brown glass eyes, CM, PE, jointed compo body, 3rd place ribbon
- 122 35" BISQUE 79 HANDWERCK**, brown glass sleep eyes, OM with teeth, PE, mohair wig, BJCB, white dress with eyeglasses
- 123 16 ½" BISQUE DOME SHOULDER HEAD**, blue glass eyes, CM, PE, mohair wig, kid body with bisque arms, dark blue dress
- 124 18" FRENCH FASHION SWIVEL NECK**, blue glass eyes, CM, PE, blonde mohair wig with braids, kid body, blue/black check walking suit (melting)
- 125 LARGE LOT OF ANTIQUE & MODERN DOLL SHOES & parts**, pairs & singles, Jumeau soles
- 126 10 ½" BISQUE DOME SHOULDER HEAD 3812 K**, brown glass eyes, CM, mohair wig, kid body with bisque arms, white dress
- 127 13" BISQUE KESTNER 8**, brown glass sleep eyes, CM, mohair wig, BJCB, white dress
- 128 12" BISQUE KLEY & HAHN 546 CHARACTER**, blue glass sleep eyes, CM, PE, blonde braided mohair wig, BJCB white/blue dress

129 9 ½" BISQUE AM 200 GOOGLY, blue glass eyes, CM, mohair wig, compo body, pink/white dress

130 MAX & MORITZ, 4 ½" MAX, painted features, all bisque with UFDC 1st place ribbon, & 6 ½" Moritz bisque head, painted features, compo body with painted socks & shoes (body rough) UFDC 3rd place ribbon

131 2 – ALL BISQUE GOOGLIES, 5 ¾" 217, brown glass Googly eyes, CM, painted shoes & socks ½" hairline back of head, & 4 ½" blue glass eyes, CM, painted shoes & socks

132 14 ½" FRENCH FASHION SWIVEL NECK, blue glass eyes, CM, PE, mohair wig, kid over wood body, bisque arms (possibly replaced), white dress

133 17 ½" BISQUE DOME SHOULDER HEAD, brown glass eyes, CM, PE, mohair wig, kid body with bisque arms, peach dress with apron

134 15" BISQUE TWO FACE, blue glass eyes, smiling & crying mouth, mohair wig, BJCB, 2nd place ribbon, lever on top of head

135 12" BISQUE SHOULDER HEAD KESTNER 4, brown glass sleep eyes, CM, mohair wig, cloth body with bisque arms, peach dress

136 8 ½" BISQUE DEMALCOL GOOGLIE, mohair wig, CM, compo body, red dress holding small doll

137 16" FRENCH FASHION, BLUE GLASS EYES, CM, PE, mohair wig, kid body, peach walking dress

138 LOT OF 10 BISQUE FIGS. 4" – 8", inkwell with children, dancing partners, etc.

139 6 ½" ALL BISQUE SW & Co 405 GOOGLIE, blue glass eyes, watermelon mouth, partial wig, purple dress

140 9 ½" ALICE, WAX OVER COMPO, dark brown pupiless glass eyes, blue floral dress, in clock case

141 5" ALL BISQUE JEANNE ORSINI WITH ORIGINAL VIVI LABEL, blue glass eyes, painted stockings & shoes, white/blue dress

142 5" ALL BISQUE JEANNE ORSINI WITH ORIGINAL VIVI LABEL, blue painted eyes, painted stockings & shoes, blue floral dress

143 5" ALL BISQUE JEANNE ORSINI with original Vivi label, brown glass eyes, painted stockings & shoes, light brown outfit

144 5" ALL BISQUE JEANNE ORSINI 1920, brown glass eyes, painted stockings & shoes, no clothes



129



130



131



132



133



134



135



136



137



138



139



140



141



142



143



144

*Withington Auction, Inc. - Dolls at Auction - November 7th & 8th, 2019
No Inspections of Dolls {23} Lots after the auction begins*



145



146



147



148



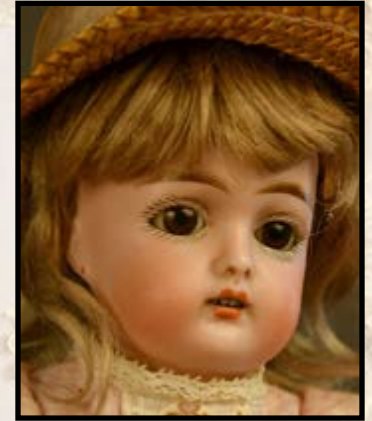
149



150



151



152



153



154



155



156



157



158



159



160

Withington Auction, Inc. - Dolls at Auction - November 7th & 8th, 2019
No Inspections of Dolls {24} Lots after the auction begins

- 145 8" BISQUE GEBRUDER HEUBACH 8678 GOOGLY**, blue glass sleep Googly eyes, watermelon mouth, compo body, tan/pink dress
- 146 LOT OF 7 KEWPIES 3 ½" – 6"**, all bisque, side glancing eyes
- 147 6 ¾" ALL BISQUE 222 "FAIRY"** partial label, side glancing brown glass sleep eyes, mohair wig
- 148 12 ½" BISQUE POUTY KESTNER**, brown glass sleep eyes, CM, blonde mohair wig, BJCB, white/black outfit
- 149 15" SCHOENHUT, BLONDE SHAPED HAIR** with blue bow, painted features, OM with teeth, jointed wood body, blue gingham dress
- 150 2 – BLACK BISQUE KUHNLENZ 34 DOLLS**, 7" brown glass eyes, OM with teeth, no wig, jointed compo body, green dress, & 9" brown glass eyes, OM with teeth, mohair wig, jointed compo body, beige dress
- 151 10 ½" BISQUE 164 ORIENTAL**, brown glass sleep eyes, OM with teeth, mohair wig, BJCB, Oriental outfit
- 152 10 ½" BISQUE 192**, brown glass sleep eyes, OM with teeth, mohair wig, BJCB, pink gingham dress
- 153 18 ½" SCHOENHUT GIRL**, painted features, mohair wig , OM with teeth, jointed wood body, pink dress (face crazing, rubs)
- 154 14 ½" SCHOENHUT GIRL**, wood sculpted hair with blue ribbon, painted features, jointed wood body, Schoenhut pin
- 155 16 ½" BLONDE HAIR PINK TINT FROZEN CHARLIE**, painted features, small face rub
- 156 21" BISQUE K*R SIMON HALBIG 117 N**, brown glass flirty eyes, OM with teeth, mohair wig, BJCB, floral dress with blue coat
- 157 20" BISQUE KESTNER 14**, blue glass eyes, CM, blonde mohair wig, BJCB, white dress
- 158 18" BISQUE KESTNER XLL**, blue glass sleep eyes, CM, mohair wig, BJCB, white dress, early shoes
- 159 19" BISQUE K*R SIMON HALBIG 117A**, blue glass sleep eyes, CM, blonde mohair wig, BJCB, pink dress
- 160 20" BISQUE KESTNER 128**, brown glass sleep eyes, CM, mohair wig, BJCB, white dress

- 161 5" ALL BISQUE BAREFOOT MIGNONETTE**, blue glass eyes, CM, mohair wig, red dress (tiny dark spot under right ear)
- 162 4 ½" ALL BISQUE MIGNONETTE**, blue glass eyes, jointed elbows, painted socks & shoes, red mohair wig
- 163 18" BISQUE KESTNER XLL**, blue glass sleep eyes, CM, mohair wig, BJCB, white dress, red shoes
- 164 9" BISQUE KESTNER, BLUE GLASS SLEEP EYES**, CM, mohair wig, BJCB, white dress, fur trimmed coat, antique blue shoes
- 165 7" BISQUE AM 200 GOOGLY**, blue glass eyes, watermelon mouth, comp body, pink dress
- 166 13" BISQUE KESTNER 7**, blue glass sleep eyes (tiny chip right corner), CM, mohair wig, BJCB, white dress, (in making firing line right ear)
- 167 24" BISQUE K*R SIMON HALBIG 117**, brown glass sleep eyes, CM, mohair wig, BJCB, blue dress (flaw in bisque left upper check/forehead)
- 168 12" BISQUE S&H 949**, blue glass eyes, CM, PE, mohair wig, straight wrist compo body, white dress
- 169 12" BISQUE KESTNER 5**, brown glass sleep eyes, CM, mohair wig, BJCB, white dress
- 170 17" FRENCH FASHION 4**, blue glass eyes, CM, PE, blonde mohair wig, kid body, early black dress & button shoes, (tiny bisque flaw above right chin)
- 171 18" BISQUE 189, BLUE GLASS SLEEP EYES**, OM with teeth, PE, straight wrist compo body, mohair wig, plaid skirt
- 172 15" BISQUE KESTNER 189**, blue glass eyes, CM, PE, skin wig, straight wrist compo body, off white dress, (rim chip above left ear)
- 173 16" BISQUE 116A K*R S&H**, blue glass sleep eyes, OM with teeth, mohair wig, BJCB, knit outfit
- 174 10" BLACK DOLL S&H 1009**, brown glass eyes, OM with teeth, PE, straight wrist compo body, mohair wig, floral dress
- 175 8" BISQUE KESTNER 155**, brown glass sleep eyes, OM with teeth, mohair wig, straight wrist compo body, pink knit suit
- 176 5 ½" FRENCH ALL BISQUE BAREFOOT**, blue glass eyes, CM, blonde mohair wig with braids, maroon dress, UFDC blue ribbon



161



162



163



164



165



166



167



168



169



170



171



172



173



174



175



176

*Withington Auction, Inc. - Dolls at Auction - November 7th & 8th, 2019
No Inspections of Dolls {27} Lots after the auction begins*



177



178



179



180



181



182



183



184



185



186



187



188



189



190



191



192

Withington Auction, Inc. - Dolls at Auction - November 7th & 8th, 2019
No Inspections of Dolls {28} Lots after the auction begins

- 177 18" BLONDE HAIR PARIAN SHOULDER HEAD**, painted features, CM, PE, up-swept hairdo, cloth body with bisque arms, early red check outfit
- 178 22" LENCI PIERROT, FELT FACE** with painted features, black felt outfit, wood mandolin, cloth body, 1st & 2nd place ribbons
- 179 7 PAIR OF ANTIQUE DOLL SHOES** & many pairs of assorted socks
- 180 12" TRUNK WITH MANY SINGLE** antique shoes & socks
- 181 18 ½" BISQUE KESTNER 149**, brown glass sleep eyes, open mouth with teeth, mohair wig, BJCB, pink dress (1 shoe)
- 182 11" BISQUE K*R 101**, painted features, CM, mohair wig, BJCB, red dress
- 183 20" BISQUE KESTNER 164**, blue glass sleep eyes, OM with teeth, mohair wig, BJCB (replaced hands?), white dress
- 184 LOT OF 5 SMALL BISQUE HEAD DOLLS 5" – 6 ½"**, glass sleep eyes, 4 – CM, 1-OM, compo bodies, mohair wigs
- 185 19" BISQUE JDK 247**, brown glass sleep eyes, OM with teeth, mohair wig, compo toddler body, white dress, (dirt in mold seam above right ear)
- 186 LOT OF ASSORTED EARLY FUR** covered dogs, skin horse
- 187 14" BISQUE K*R 121**, blue glass sleep eyes, OM with teeth, mohair wig, BJCB (repair to little finger on right hand), plaid dress
- 188 26" BISQUE JDK 237**, blue glass sleep eyes, OM with teeth, mohair wig, BJCB, white dress
- 189 22" BISQUE S&H 719 DEP**, blue glass sleep eyes, OM with teeth, PE, mohair wig, BJCB, white dress
- 190 24" BISQUE DOME TOP SHOULDER HEAD, BLUE GLASS EYES**, mohair wig, CM, PE, cloth body with leather arms, check dress
- 191 21 ½" JUMEAU FRENCH FASHION**, Blue glass eyes, CM, PE, mohair wig, kid body, antique peach outfit, antique shoes
- 192 24" BISQUE JDK 214**, blue glass sleep eyes, OM with teeth, mohair wig, BJCB, (left finger repair), white dress

- 192.01** LOT OF 6 DRESSEL & KISTER HALF DOLLS in various poses
- 192.02** LOT OF EARLY PAINT DECORATED DOLL TIN WARE, green/white, wash basin & stand, bucket with teddy bear
- 192.03** 10 – SMALL ALL BISQUE DOLLS 3 ½” – 4”, 1 – glass sleep eyes, 9 – painted features, most have painted socks & shoes, incised marks, 140, 357, 156, 170, 96, 2 – clothed, 8 – no clothes, (1 has small nick back of head)
- 192.04** 24” BLACK WALNUT CLOCK CASE SET UP AS 2 ROOM SHADOW BOXES with 6 small china dolls & accessories
- 192.05** 13” BISQUE HEUBACH 5689 smiling girl, blue glass sleep eyes, OM with teeth, red mohair wig with braids, straight wrist compo body, white/green stripe dress
- 192.06** 2 – BISQUE HEUBACH’S, 9” GIRL, painted features, CM, blonde sculpted hair with blue ribbon, compo body, painted shoes & socks, knit dress, & 10” boy, painted features, CM, blonde sculpted hair, compo body, painted shoes, brown suit
- 192.07** 2 – BLACK HAIR CHINA DOLLS, 1 - 20” painted features, cloth body, check dress, & 17” painted features, cloth body with china arms & legs, maroon
- 192.08** 2 – BISQUE HEAD DOLLS, 1 – 9 ½” K&H 525, painted features, OM, compo body, blue outfit, & 1 – 12” Heubach shoulder head, painted features, cloth body with bisque arms, green check suit
- 192.09** 29” BISQUE K*R SIMON HALBIG 127, brown glass sleep eyes, wispy molded blonde hair, OM teeth/tongue, BJCB, blue shorts
- 192.10** 2 – BISQUE HEAD INC. 192, A 9 ½” blue glass sleep eyes (left eye fleck), PE, OM w/ teeth, straight wrist compo, blue dress, blonde mohair wig, & A 8” blue sleep eyes, OM teeth, straight wrist compo, brown mohair wig, white knit outfit, 1 shoe
- 192.11** 2 – ALL BISQUE, 1 – 6” 141, blue glass sleep eyes, O/CM, painted white low socks with brown shoes, blonde mohair wig, yellow knit dress, & 1 – 7” brown glass, CM, high painted white socks w/black shoes, black mohair wig, yellow dress
- 192.12** 14” SHADOW BOX WITH 7 SMALL ALL BISQUE DOLLS 3” – 6”, painted features, 6 w/white painted socks & brown shoes
- 192.13** 10” BISQUE KESTNER 143, blue glass sleep eyes, OM with teeth, blonde mohair wig, BJCB, blue dress, (black spec by left eye)
- 192.14** 10 ½” BISQUE KESTNER 2, BLUE GLASS EYES, OM with teeth, PE, straight wrist compo body (fingers repair), blonde mohair wig, blue sailor suit
- 192.15** 2 – SMALL BISQUE DOLLS, 1 – 5” all bisque, brown glass sleep eyes, OM with teeth, blonde mohair wig, painted high black socks w/brown shoes, white dress, 1 – 5” Heubach, brown glass sleep eyes, CM, blonde mohair wig, compo body, painted socks & shoes, pink dress
- 192.16** 2 – SM. BISQUE DOLLS, 1 – 7” 80 4/0 brown glass sleep eyes, OM teeth, blonde mohair wig, straight wrist compo, painted socks & shoes, beige dress, (right ear nick), & 1- 8” all bisque 150, brown glass sleep eyes, OM with teeth, painted pink socks w/black shoes, green dress, (rim rough spot)



192.01



192.02



192.03



192.04



192.05



192.06



192.07



192.08



192.09



192.10



192.11



192.12



192.13



192.14



192.15



192.16

*Withington Auction, Inc. - Dolls at Auction - November 7th & 8th, 2019
No Inspections of Dolls {31} Lots after the auction begins*



192.17



192.18



192.19



192.20



192.21



192.22



192.23



192.24



192.25



192.26



192.27



192.28



192.29



192.30



192.31



192.32

*Withington Auction, Inc. - Dolls at Auction - November 7th & 8th, 2019
No Inspections of Dolls {32} Lots after the auction begins*

192.17 5 – 4 ½” **ALL BISQUE KESTNER DOLLS**, 3 – with glass eyes, 2 – painted features, 4 – blonde mohair wigs, 1 – brown sculpted hair, painted socks w/black/brown shoes, 4 – knitted outfits, 1- no clothes

192.18 3 – **SMALL BISQUE DOLLS**, 1 – 6” 301 Unis Frances, blue glass eyes, OM with teeth, red mohair wig with braids, compo body, national outfit, 6 ½” 1078, blue glass sleep eyes, OM with teeth, red mohair wig with braids, BJCB, white dress, & 6 ½” 1078, blue glass sleep eyes, OM with teeth, BJCB, black mohair wig, red coat

192.19 20” **BISQUE SIMON & HALBIG 1249 SANTA**, blue glass sleep eyes, OM with teeth, PE, blonde mohair wig, BJCB, white dress

192.20 **LOT OF 3 – 9” LONG HORSE PULL TOY** on stenciled wood base, (missing 1 iron wheel), 8” bisque boy candy container, blue glass eyes, dressed as a Dutch boy, & 4” lift top trunk with 8 miniature all bisque figures

192.21 3–9 ½” **ANTQ. HAT STANDS W/PAPER MACHE** doll heads, painted features

192.22 34” **BISQUE SIMON & HALBIG HEINRICH Handwerck W**, brown glass sleep eyes, OM with teeth, PE, blonde mohair wig, BJCB (left hand repair), white dress, (excess wig glue)

192.23 6 – 2 ½” – 3” **ALL BISQUE DOLLS**, painted features, all original clothes, in 3 small boxes

192.24 2 – **BISQUE KUHNLENZ 34**, 1 – 6” Mother & baby, dark glass eyes, mohair wig, jointed body, orange painted socks W/black shoes, original outfit, & 6” dark glass eyes, OM with teeth, mohair wig, jointed body, painted red socks w/ black shoes, original outfit

192.25 4 – 4 ½” – 5 ½” **BISQUE HEAD DOLLS**, glass eyes, OM with teeth, mohair wigs, compo bodies, painted shoes & socks

192.26 **LOT OF 6 HALF DOLLS**, 2 – Dresden style fancy busts, painted features, 4 – china half dolls in various dress & poses

192.27 8” **ALL BISQUE S&H 939**, blue glass eyes, OM with teeth, blonde skin wig, blue paint high socks w/black shoes, white dress (repro?)

192.28 16” **BISQUE S&H 739**, brown glass eyes, OM with teeth, brown mohair wig, BJCB, white dress (repro?)

192.29 25” **BISQUE S&H 949**, blue glass eyes, CM, PE, blonde mohair wig, BJCB, pink gingham dress, (repro?)

192.30 **LOT OF 6 – SMALL 3” – 5” all bisque dolls**, 5 – painted features, sculpted hair, painted socks & shoes, 1 – blue glass eyes, painted socks & shoes, all have no clothes

192.31 5 – **SMALL BISQUE HEAD DOLLS 5” – 6 ½”**, glass eyes, OM, mohair wigs, compo bodies, 2 – boy soldiers

192.32 6 – **SMALL ALL BISQUE DOLLS 3 ½” – 4 ½”**, 4 – glass eyes, 2 – painted features, mohair wigs, 5 – painted socks & shoes, clothed

192.33 24" BISQUE EDEN BEBE PARIS 9, blue paperweight glass eyes, OM with 6 teeth, PE, lt. brown mohair wig, BJCB (some minor repairs), (dark firing spec over left eye), (faint hairline from rim above left eye, to the temple) "Depose w/ figure Mk. Shoes

192.34 20" BISQUE SCHOENAU & HOFFMEISTER 1909, blue glass sleep eyes, OM with teeth, blonde mohair wig, BJCB, white dress

192.35 27" BISQUE F 11 G BLOCK LETTERS, brown bulging glass eyes, Closed Mouth, PE, cork pate, brown human hair wig, composition body (finger cracks)

192.36 14 ½" BISQUE SCHMITT, INCISED SCH IN A SHIELD, blue glass eyes, open/closed mouth, PE (tiny nicks), blonde mohair wig (pate glued down, excess glue around head), compo body w/ flat bottom, (no shield mark on bottom)

192.37 11" BISQUE DOME HEAD (speckling on face), blonde mohair skin wig, partially glued down, key-wind, metal walking body, bisque arms, blue glass eyes, CM, PE, blue silk w/ ecru lace dress (replaced)

192.38 11" BISQUE CIRCLE DOT BRU, blue glass eyes, CM, PE, orig. blonde mohair wig & extra blonde mohair wig, kid body w/ bisque arms, early outfit & shoes (replaced heels, tiny fleck right corner eye, tiny left cheek rub, in firing spec above right lip)

192.39 15" BISQUE DEPOSE E 6 J JUMEAU, blue glass eyes, CM, PE, blonde mohair wig, blue stamp Jumeau compo body with straight wrists, early dress & carrying bag, (tiny firing flaw left eye corner), Jumeau shoes

192.40 10" BISQUE TETE JUMEAU, BLUE GLASS EYES, CM, PE (tiny nick), blonde mohair wig, blue stamp Jumeau compo body, peach stripe dress, French shoes

192.41 16" BISQUE F 6 G BLOCK LETTERS, blue glass eyes, CM, PE, blonde mohair wig, chin dimple, compo body, pink outfit

192.42 16" BISQUE PORTRAIT JUMEAU 8, brown glass eyes, CM, PE, skin wig & pate, blue stamp straight wrist Jumeau body, green dress, original shoes, (tiny line by left applied ear)

192.43 40" LONG VICTORIAN WICKER WOOD WHEELED CARRIAGE, with interior cushions/bedding & parasol, along with a large turquoise/pink parasol

The Cameo Clollection of Dolores Smith - We found a jewelry box while packing up Dolores' dolls for auction. She never wore much jewelry, maybe some earrings or an occasional ring... but she always loved antique Cameos - Hand-carved from shells or bone, set in jewelers-made settings... each piece is a one-of-a-kind Work of Art!

C01 2 - 2" OVAL BROWN CAMEO BROOCHES with flower designs in gold mounts

C02 2 - 2" OVAL CAMEO BROOCHES, lady playing harp & women's profile in gold mounts

C03 2 - 2 ¼" OVAL CAMEO BROOCHES with rural village scenes

C04 2 - 2 3/8" OVAL CAMEO BROOCHES, seated lady with dog, & lady with doves, in gold mounts

C05 2 - 2" OVAL CAMEO BROOCHES, profile of woman in 14K gold setting & profile of woman in silver setting with tiny diamonds



192.33



192.34



192.35



192.36



192.37



192.38



192.39



192.40



192.41



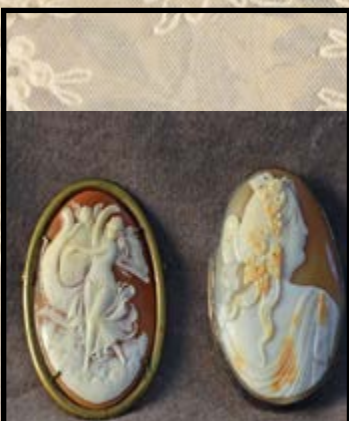
192.42



192.43



C 01



C02



C 03



C04



C05

*Withington Auction, Inc. - Dolls at Auction - November 7th & 8th, 2019
No Inspections of Dolls {35} Lots after the auction begins*



C 06



C 07



C 08



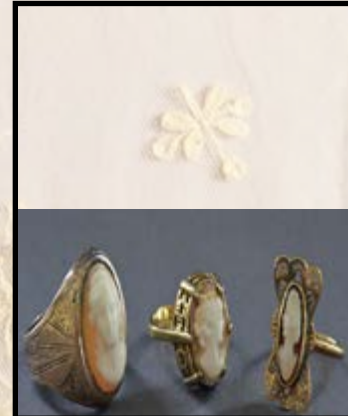
C 09



C 010



C 011



C 012



C 013



C 014



C 015



C 016



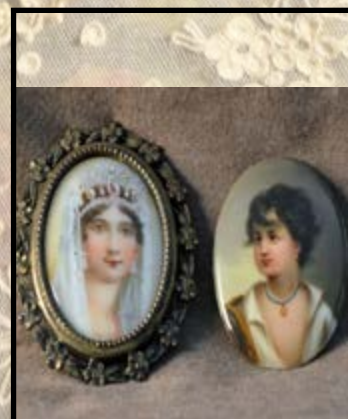
C 017



C018



C 019



C020



C021

Withington Auction, Inc. - Dolls at Auction - November 7th & 8th, 2019
 No Inspections of Dolls {36} Lots after the auction begins

- C06 2 – 2” OVAL CAMEO BROOCHES/NECKLACES**, woman playing harp, & woman with child, gold settings
- C07 2 – 2” PINK & WHITE CAMEO BROOCHES/NECKLACE**, woman with flowers in hair, & flowers, 1 gold, 1 silver setting
- C08 2 – 2” OVAL CAMEO BROOCHES/NECKLACES**, woman & angel playing flute, & man & woman, 1 – silver, 1 gold setting
- C09 2 – CAMEO BROOCHES/NECKLACES**, 1 ¾” x 1 ½” birds & flowers in gold mount, & 2 ½” x ½” 4 angels in gold setting
- C010 3 – SMALL CAMEO NECKLACES WITH WOMEN’S PROFILE**, 2 in silver settings, 1 in gold with pearl
- C011 2 – SMALL CAMEO BROOCHES/NECKLACE**, 1 ¼” & 1 ½” women’s profile, each with a necklace & tiny diamond? in silver settings
- C012 4 – CAMEO RINGS WITH LADIES**, 3 – gold settings, 1 silver setting
- C013 2 – OVAL CAMEO BROOCHES/NECKLACES**, 2 ¼” & 2”, 2” is 2 color with two men’s profiles, larger has 3 women, in gold settings
- C014 3 – CAMEO NECKLACES**, 1 ¾” WOMAN WITH PEARL, square in silver setting, 2 - 1½” oval flowers & woman, silver & gold setting
- C015 3 – OVAL CAMEO BROOCHES/NECKLACES**, 1 ½”, 1 ¾”, & 2”, floral designs, in gold settings
- C016 LOT OF 5 CAMEO ITEMS**, silver earrings, small silver ring, small necklace, tear drop brooch
- C017 3 – SMALL CAMEO BROOCHES/NECKLACES**, woman, 2 in gold settings, 1 silver setting
- C018 2 – OVAL CAMEO BROOCHES**, 1 ¾”, woman, & 2-woman one play harp, gold settings
- C019 2 – CAMEOS**, 1 ½” ROUND WITH PROFILE OF WOMAN, 1 ½” oval of angel, 1 gold, 1 silver mount
- C020 2 – OVAL 1 ¾” PAINTINGS ON PORCELAIN**, silver mounted brooch, & 1 no frame
- C021 OPPORTUNITY BOX LOT, 5 10K GOLD BANDS**, 1879 & 1879o silver dollars, 3 misc. brooches, 1 – SS pearl ring

The End of Day 1 - Picture Dolls ... time for the Non-Picture dolls.

**Don’t forget the Evening Preview for the November 8th Doll Auction
will be in the Ballroom tonight from 7:00 - 9:00**

*Withington Auction, Inc. - November 7 & 8, 2019
There will be no Inspections of dolls / Lots after the auction begins.*

*** NOTES ***

*** Day 1 Non-Picture Dolls ***

- 193 LOT OF 3 BISQUE HEAD DOLLS, 12" bisque S/H, blue glass sleep eyes, OM with teeth, cloth body with bisque arms, 12" Bisque S&H 1909, brown glass sleep eyes, OM with teeth, BJCB, & 14" bisque incised 62, blue glass eyes, OM with teeth, BJCB**
- 194 14" BISQUE INCISED DEP 1900, brown glass eyes, OM with teeth, BJCB, (head rim discoloration)**
- 195 27" BISQUE INC. HEUBACH KOPPELSDORF 342 12, Germany, blue glass flirty eyes, OM, straight leg compo body, synthetic, (finger repair, needs stringing, wig pulls)**
- 196 27" BISQUE HANDWERCK 119-13 GERMANY, brown glass eyes, mohair wig, OM, PE, BJCB, white dress**
- 197 20" BISQUE CHARACTER BABY INCISED JDK 257, brown glass sleep eyes, mohair wig, OM with teeth, baby compo body (arm touchups)**
- 198 34" BISQUE INCISED HANDWERCK HALBIG, brown glass sleep eyes, OM, PE, mohair wig, (large rough spot over right eye), BJCB, white dress**
- 199 27" BISQUE INCISED DEP 154, brown glass sleep eyes, OM, mohair wig, cloth body with bisque arms, white dress**
- 200 25" BISQUE INCISED 152 14, blue glass sleep eyes, OM with teeth & tongue, mohair wig, baby compo body, (needs stringing)**
- 201 2 – MOHAIR TEDDY BEARS, 12" STEIFF 1920 Classic repro, & 14" gold mohair Teddy**
- 202 21" BISQUE INCISED 1039, blue glass eyes, OM, PE, mohair wig, BJCB, yellow dress, (wig pulls)**
- 203 24" BISQUE INCISED 154, blue glass sleep eyes, OM with teeth, mohair wig, cloth body with bisque arms, white dress, (right leg damage)**
- 204 24" BISQUE INCISED GERMANY GB, brown glass sleep eyes, OM, mohair wig, BJCB**
- 205 21" BISQUE G&S GERMANY, Brown glass sleep eyes, OM, mohair wig, BJCB, white dress, (wig pulls, one shoe)**
- 206 21" BISQUE INCISED G&S GERMANY, brown glass sleep eyes, OM, mohair wig, BJCB, white dress**
- 207 LOT OF 2 - 17 ½" BISQUE INCISED 101 G My Sweetheart BJ & Co., brown glass sleep eyes, OM, mohair wig, BJCB, & 14" Bisque AT artist doll, blue glass eyes, CM, PE, blonde wig with braids, BJCB**
- 208 LOT OF 2 - 20" BISQUE INCISED 99 DEP GERMANY, blue glass sleep eyes. OM with teeth, PE, mohair wig, BJCB, (large hairline to right forehead), & 14" Bisque AT artist doll, blue glass eyes, CM, PE, blonde wig with braids, BJCB**
- 209 LOT OF 2 - 16" BISQUE DOME HEAD, blue glass eyes, CM, PE, mohair wig, cloth body with bisque arms, white dress, & 16 ½" black haired Parian artist doll in antique dress**
- 210 LOT OF 2 - 30" BLACK HAIR CHINA, blue painted eyes, cloth body, blue outfit (shoulder plate crack), & 24" black hair china, blue painted eyes, blue outfit, (new body)**
- 211 27" BISQUE INCISED WALKURE GERMANY, brown glass sleep eyes, OM with teeth, PE, BJCB**
- 212 LOT OF 2 – 14 1/2'" BISQUE SHOULDER HEAD INCISED 370, brown glass sleep eyes, OM, mohair wig, kid body, & 19" Bisque shoulder head incised 189, blue glass eyes, OM, mohair wig, kid body**

- 213 28" BISQUE DEP 109-15**, blue glass sleep eyes, OM teeth, mohair wig, BJCB
- 214 LOT OF 2 BLACK HAIR CHINAS**, 16" blue painted eyes, Germany, cloth body, china limbs, & 25" blue painted eyes, new kid body, paisley dress
- 215 19" BISQUE INCISED S&H 1079 DEP**, brown glass eyes, OM with teeth, PE, mohair wig, BJCB
- 216 LOT OF 2 – 22" BISQUE 540 GERMANY** Simon Halbig, blue glass eyes, OM with teeth, mohair wig (new body), & 18" Bisque 109 Germany Handwerck, blue glass eyes, OM with teeth, PE, mohair wig, BJCB
- 217 18" BISQUE JDK BABY**, blue glass sleep eyes, OM, compo body, (finger repairs)
- 218 17" WAX OVER COMPO**, brown glass eyes, CM, mohair wig, kid body with bisque arms, (hairline corner of right eye)
- 219 LOT OF 2 – 24" BISQUE AM 390**, brown glass sleep eyes, OM with teeth, mohair wig, BJCB, & 19" bisque artist doll
- 220 21" BLACK HAIR CHINA**, blue painted eyes, cloth body, antq. clothing (melting)
- 221 LOT OF 2 CHARACTER BABY DOLLS**, 17" Bisque 98/10 Germany, brown glass sleep eyes, OM, mohair wig, baby compo body, & 21" bisque FS & Co. Germany 60, brown glass sleep eyes, OM, mohair wig, baby compo body
- 222 2 – 14 ½" LENCI TYPE BOY & GIRL**, painted features, molded felt
- 223 23" BISQUE INCISED MADE IN GERMANY 168**, brown glass eyes, OM with teeth, HH wig, BJCB, pink dress
- 224 LOT OF 3 BLACK HAIR CHINAS**, 30" painted blue eyes, cloth body china arms & legs, (crack in shoulder plate, 15 ½" painted blue eyes, cloth body, china arms, & 15 ½" painted blue eyes, cloth body, china arms & legs
- 225 25" BISQUE INCISED CM BERGMAN SIMON HALBIG**, brown glass eyes, OM with teeth, PE, synthetic wig, BJCD, blue dress
- 226 LOT OF 2 BISQUE BABY DOLL**, 16" incised K*R Simon Halbig 121, blue glass sleep eyes, OM with teeth, mohair wig, baby compo body, 22" incise ABG 1361 55 Made in Germany, blue glass sleep eyes, OM wobbly tongue, mohair wig, baby compo body
- 227 LOT OF 2 – 18" BISQUE** incised Made in Germany, blue glass sleep eyes, OM with teeth, mohair wig, BLCB, & 20" incised S&H 402 K*R, blue glass eyes. OM with teeth, PE, mohair wig, BJCB
- 228 LOT OF 2 ARTIST DOLLS**, 16" bisque head Uncle Sam in patriotic outfit, & 17" bisque head Gibson Girl
- 229 23" BISQUE INCISED S&H 1079 DEP** Germany 11, brown glass eyes, OM with teeth, PE, mohair wig BJCB, peach dress
- 230 31" BISQUE INCISED AM 390 GERMANY**, blue glass sleep eyes, OM with teeth, mohair wig, BJCB, (needs stringing), white dress
- 231 31" BISQUE INCISED MADE IN GERMANY JDK 260**, blue glass eyes, OM with teeth, mohair wig, BJCB, white dress
- 232 29" COMPOSITION SHOULDER HEAD**, brown glass eyes, OM with teeth, cloth body, painted shoes & socks, brown dress, (right eye line in corner)

- 233 LOT OF 2 – 26” BISQUE QUEEN LOUISE**, blue glass eyes, OM with teeth, synthetic wig, BJCB, no clothes, & 19” bisque incised Made in Germany 168, brown glass sleep eyes, OM with teeth, mohair wig, BJCB, white dress
- 234 LOT OF 6 SMALL MOHAIR ANIMALS**, 4 – Steiff – sheep, 3 – Teddy bears, & 2 Boyd’s Bears
- 235 LOT OF 8 SMALL ASSORTED BISQUE** head project dolls
- 236 LOT OF 3 PROJECT DOLLS**, black hair china, blonde hair parian, bisque shoulder head 1901
- 237 LOT OF 3 ARTIST** Googly dolls
- 238 LOT OF 2 SMALL BISQUE CHARACTER BABY DOLLS**, 11” K*R Simon Halbig 126, brown glass sleep eyes, OM with teeth, mohair wig, baby compo body (needs stringing), & 11” 251 AM, brown glass sleep eyes, OM, synthetic wig, baby compo body
- 239 LOT OF 4 SMALL BISQUE** head artist dolls
- 240 LOT OF 7 SMALL BISQUE** head artist dolls
- 241 LOT OF 4 BONNET HEAD** artist dolls (1 with foot damage)
- 242 LOT OF 2 COMPOSITION** dolls & trunk, 20” & 16”
- 243 12” DOME TOP TRUNK** with small bisque doll & accessories
- 244 LOT OF 6** parasols
- 245 BOX LOT OF** assorted hats
- 246 BOX LOT OF ASSORTED SMALL**, early doll shoes, etc.
- 247 BOX LOT OF ASSORTED SMALL**, great small violin & case
- 248 BOX LOT OF ASSORTED** clothes
- 249 BOX LOT OF ASSORTED** clothes & smalls
- 250 GERMAN IMPROVED SEWING MACHINE**, 8”L black paint with hand paint decoration, with original instruction sheet
- 251 LOT OF 2 – 22” BLONDE HAIR PARIAN**, blue glass eyes, CM, kid body, bisque arms, white dress & 20” bisque incised Germany, kid body, brown glass sleep eyes, OM with teeth, turquoise dress
- 252 LOT OF 2 BISQUE DOLLS**, 17” incised S&H 1079 DEP, blue glass sleep eyes, OM with teeth, PE, HH wig, BJCB red gingham dress, & 18” incised 2X, blue glass eyes, OM with teeth, PE, mohair wig with extensions, compo walking body, white dress

- 253 LOT OF SIX ASSORTED SMALL DOLLS**, AM 390, celluloid, all bisque
- 254 LOT OF 2 DOLLS, 13" BISQUE SHOULDER HEAD**, blue glass eyes, OM teeth, mohair wig, Kid body with bisque arms, & 15" celluloid boy, blue glass eyes, blonde sculpted hair
- 255 LOT OF 3 BISQUE BABY DOLLS**, 13" Koppelsdorf 300, brown glass sleep eyes, OM with teeth, mohair wig, baby compo body (head staining), 10" K*R 100, painted blue eyes, OM, baby compo body, & 8" K*R all bisque, painted eyes,
- 256 LOT OF 4 SMALL BONNET HEAD DOLLS** on new & old bodies
- 257 32" BISQUE HANDWERCK**, brown glass eyes, OM with teeth, PE, BJCB, early outfit & shoes
- 258 LOT OF 4 SMALL BISQUE dolls**, 5" – 8"
- 259 LOT OF 4 DOLLS, 2 – blonde hair bisque & parian**, 1 - all bisque (eye problems), 1 – bisque on new body
- 260 LOT OF 3 BISQUE HEAD DOLLS**, 15" S&H DEP, blue glass eyes. OM with teeth, PE, mohair wig, cloth body, 16" painted blonde hair boy artist doll, & 16" molded blonde hair boy incised 3, blue painted eyes, kid body
- 261 BOX LOT OF WHITES**, doll clothing accessories, etc.
- 262 BOX LOT OF SMALL FABRIC PIECES**, doll socks, shoes, gloves, ribbon, etc.
- 263 BOX LOT OF DOLL HATS**, doll dress, child's gold necklace
- 264 LOT OF 2 STEIFF BEARS**, 10" soft gold in box & 12" soft gold Dickey in box
- 265 LOT OF 4 ITEMS, 22" COMPO Horseman**, 12" compo baby, 23" Kestner compo body, doll wall pocket Occupied Japan
- 266 LOT OF 2 BISQUE HEAD DOLLS**, 7" incised 3, brown glass sleep eyes, OM with teeth, mohair wig, straight leg compo body, white snow suit, & 9" S&H 1279, blue glass eyes, OM with teeth, BJCB
- 267 LOT OF 3 BISQUE HEAD DOLLS**, 11 ½" 1894, brown glass sleep eyes, OM with teeth, mohair wig, BJCB, (clothes melting), 11 ½" 4/0, brown glass eyes, OM with teeth, mohair wig, BJCB, early outfit, & 20" Nippon, brown glass eyes, OM with teeth, mohair wig, kid body with small 48 star American flag
- 268 17 ½" BISQUE S&H 1079 DEP**, blue glass eyes, OM with teeth, PE, BJCB, white outfit
- 269 23" BISQUE 167 KESTNER**, brown glass sleep eyes. OM, teeth, mohair wig, plaster pate, BJCB (needs stringing)
- 270 21" BISQUE A S 71/2 GERMANY**, blue glass eyes, OM with teeth, HH wig, BJCB
- 271 LOT OF 2 BISQUE BABY DOLLS**, 14" Grace Story Putnam By-lo, cloth body, celluloid hands, & 16" Revalo 22-7 Germany, brown glass sleep eyes, OM with teeth, bent leg baby compo body
- 272 16 ½" BLONDE HAIR PARIAN**, painted blue eyes, CM, sculpted hair, cloth body with bisque arms, melting outfit

- 273 LOT OF 2 PAINTED BISQUE** souvenir dolls, 15" brown glass eyes, OM with teeth, dark skin, BJCB, original outfit, & 15 ½" brown glass sleep eyes, OM with teeth, dark skin, BJCB original outfit
- 274 17" T CHIPPENDALE CAST IRON DOLL** arm chair with cushion seat
- 275 28" JOEL ELLIS DOLL CARRIAGE**, blue paint, stencil decoration, top with fringe
- 276 LOT OF 2 BISQUE CHARACTER BABY DOLLS**, 10" Germany 3082, blue glass sleep eyes, OM, mohair wig, baby compo body, white dress, & 15" K*R 126, blue glass sleep eyes, OM with teeth, baby compo body
- 277 2 – 9" LENCI GIRL & BOY Mascotte**, painted features on felt, girl has original tags, boy has moth holes in clothes
- 278 LOT OF 2 BISQUE DOLLS**, 12" bisque shoulder head AM, brown glass eyes (need to be reset), OM with teeth, mohair wig, cloth body, & 8" Kestner 143, brown glass sleep eyes, OM with teeth, mohair wig, BJCB
- 279 LOT OF 2 BISQUE DOLLS**, 14" Heubach 8306 character boy, blue painted eyes, OM, kid body, bisque arms, & 9" AM 360, blue glass eyes, OM, straight leg compo body
- 280 LOT OF 4 MODERN DOLLS**, 7 ½" bent knee Ginny, 7 ½" bent knee Vogue (arms not attached, & 2 small travel dolls
- 281 LOT OF 2 ARTIST DOLLS**, 17" shoulder head parian with bun & flowers in black hair, painted features, cloth body with bisque arms & legs, & 16" blonde hair parian, painted features, cloth body with bisque arms & legs, E Clear
- 282 LOT OF 2 BISQUE DOLLS**, 15" S&H 1260, blue glass eyes, OM with teeth, PE, kid body with bisque arms, mohair wig, (finger damage), & 16 ½" bisque shoulder head Lilly, blue glass eyes, mohair wig, OM with teeth, kid body with bisque arms
- 283 LOT OF 2 BISQUE DOLLS**, 19" AM 370 shoulder head, blue glass sleep eyes, OM with teeth, cloth body with bisque arms, mohair wig, 22" German, brown glass sleep eyes, OM with teeth, mohair wig, BJCB
- 284 LOT OF 2 ARTIST BONNET TOP DOLLS**, 16" E Clear, blue glass eyes, CM, blue scarf, cloth body with bisque arms & legs, & 15" painted features, sculpted blonde hair with blue hat (shoulder plate crack), cloth body with kid arms
- 285 LOT OF 2 EMMA CLEAR ARTIST DOLLS**, 18" "Grape Lady", blonde hair china, painted features, cloth body with china hands & feet, & 19" blond hair parian, painted features, cloth body with leather arms,
- 286 LOT OF 2 BISQUE DOLLS**, 13" bottle doll "Ruth" blue glass eyes, OM with teeth, dressed as a seamstress, & 13" shoulder head boy Germany 76/0. blue glass sleep eyes, OM with teeth, kid body
- 287 LOT OF 3 ARTIST DOLLS**, 14" 1994 UFDC Queen Victoria #763, 11 ½" blonde parian with 4 leaf clovers in hair, painted features, cloth body with bisque arms & legs, & 11 ½" Bonnet head, painted features, cloth body with kid arms
- 288 LOT OF 3 BISQUE DOLLS**, 13 ½" AM 9/0, blue glass eyes, OM with teeth, mohair wig, kid body with bisque arms, 11" 3/0, blue glass eyes, OM teeth, mohair wig, BJCB, & 8" 1079, blue glass sleep eyes, OM teeth, mohair wig, straight leg compo body
- 289 22" EMMA CLEAR BLACK HAIR CHINA**, painted features, CM, cloth body with china arms & legs
- 290 LOT OF 2 – 16" PAPER MACHE** shoulder head, blue glass sleep eyes, CM, cloth body with paper mache arms & legs, & 13" Bru fashion artist doll, blue glass eyes, CM, PE, new kid body bisque arms, no clothes
- 291 LOT OF 2 – 12" METAL HEAD**, painted features, CM, cloth body, bisque arms, & 10" Paper mache shoulder head, blue glass eyes. CM, mohair wig, cloth body
- 292 LOT OF 2 BISQUE DOLLS**, 15" shoulder head, blue glass eyes, OM with teeth, mohair wig, cloth body with bisque arms, & 15" AM 370 blue glass eyes, OCM, mohair wig, kid body

- 293 LOT OF 3 BISQUE DOLLS, 14" AM SHOULDER HEAD**, brown glass eyes, OM with teeth, mohair wig, cloth body with bisque arms, 16" AM 370, blue glass sleep eyes, OM with teeth, mohair wig, cloth body with leather arms, & 14" AM 370, blue glass sleep eyes, OM with teeth, mohair wig, kid body with bisque arms
- 294 LOT OF 2 DOLLS, 15" EMMA CLEAR PARIAN** shoulder head, painted features, cloth body, CM, red dress, & 16" dome shoulder head with mohair wig, painted features cloth body with new bisque arms & legs, blue/green dress
- 295 LOT OF 2 SMALL CHINA DOLLS**, 10" blonde hair china, painted features, cloth body with leather arms, & 8 ½" black hair china, painted features, cloth body with china arms
- 296 LOT OF 2 BISQUE DOLLS**, 16" bisque shoulder head Germany, blue glass sleep eyes, OM with teeth, synthetic wig, kid body with compo arms & legs, & 13" bisque shoulder head boy, brown glass eyes, CM, mohair wig, kid body with bisque arms
- 297 15" BISQUE 160-3, BLUE GLASS EYES, OCM**, mohair wig, cloth body with kid arms, purple dress
- 298 BOX LOT OF ASSORTED** early doll clothing
- 299 BOX LOT OF ASSORTED** early doll clothing
- 300 LOT OF EARLY DOLL CLOTHING & clothing accessories**
- 301 LOT OF 6 EARLY CLOTH DOLLS 8" – 14"** painted & sewn features
- 302 LOT OF BECASSINE DOLLS**, small dolls, & Becassine book
- 303 LOT OF EARLY SMALLS**, small leather trunk & contents, tin penny toy sewing machine in original box, toy bank, & 2 peg wooden dolls
- 304 LOT OF ASSORTED DOLL SMALLS**, shoes, handbags, & accessories
- 305 BOX LOT OF ASSORTED DOLL SMALLS**, clothes, & accessories
- 306 2 LOTS OF ASSORTED WHITES**, trims, etc, & lot of whites, quilt, & small linens
- 307 BOX LOT OF ASSORTED DOLL** smalls & accessories
- 308 LOT OF ASSORTED DOLL** clothes & accessories
- 309 LOT OF ASSORTED MINIATURE** doll furniture & accessories
- 310 LOT OF DOLL SHOES**, socks, & accessories
- 311 LOT OF ASSORTED DOLL** accessories
- 312 LOT OF MINIATURE DOLL HOUSE RUGS**, small brass doll bed, etc.

- 313 WHITE PAINTED SWINGING DOLL CRADLE** on wheels, & doll step back cupboard
- 314 BOX LOT OF ASSORTED DOLL SMALLS**, toys, & Christmas ornaments
- 315 LOT OF ASSORTED SMALLS** & figurines
- 316 LOT OF ASSORTED** doll smalls
- 317 LOT OF MINIATURE SHEEP** & cloth sheep
- 318 LOT OF CHILDREN'S CUPS**, miniature china, & 2 figurines
- 319 LARGE LOT OF PAPER** dolls
- 320 3 – EARLY SMALL DOLL** dresses & hat box
- 321 LOT OF ORIENTAL ITEMS**, Samurai outfit for a doll in black lacquer box, 24 ½” Ichimatsu girl doll in original costume, & lot of assorted Oriental items, doll, etc.
- 322 LOT OF 3 FRAMED 18” x 22 ½”** Russian prints, 1 – with Punch from Punch & Judy, early 1900's copies
- 323 LOT OF MINIATURE FURNITURE**, 4 pieces of paint & stencil decorated furniture, table, rocker, & 2 side chairs, & lot of upholstered furniture, couch, 2 wing chairs, etc.
- 324 LARGE PAPER LOT OF EARLY** Valentines & postcards
- 325 LOT OF ASSORTED** smalls
- 326 LOT OF ASSORTED** smalls
- 327 LARGE LOT OF EARLY** doll clothes
- 328 LARGE LOT DOLL HEADS** and parts Dolores used for Christmas ornaments
- 329 LARGE LOT OF EASTER** decorations, ornaments, etc.
- 330 PICNIC BASKET WITH 4** mohair Teddy Bears
- 331 LOT OF SMALL EARLY** quilts & rugs
- 332 BOX LOT OF ASSORTED SMALLS** & miniature furniture

- 333 LOT OF 6 PIECES OF** doll furniture
- 334 THORENS SWITZERLAND MINIATURE MUSIC BOX** disc player with 15 discs & wood case
- 335 37" TALL EMBROIDERED FIREPLACE SCREEN** in carved tri-foot stand, flower & scroll carvings in wood frame
- 336 3 INSTANT RELATIVE PICTURES,** 15 ½' x 20" oil on canvas unframed portrait of young women, (tear), framed 9" x 12 1/2" watercolor portrait of a lady, & 13 ½" x 20" framed print of young man
- 337 LOT OF COSTUME JEWELRY &** doll smalls
- 338 ASSORTED LOT OF DOLL** smalls
- 339 LOT OF 2 SMALL FRAMED EARLY SAMPLERS,** stereopticon viewer & cards & 2 – daguerreotypes, (1 just a case)
- 340 ASSORTED STUFFED** animal lot
- 341 21" X 26" FRAMED OIL ON CANVAS** of young man in black suit
- 342 LOT OF 3 FRAMED PRINTS,** girl w/doll, girl with dog, & girl with doll & carriage
- 343 LOT OF CHILDREN'S BOOKS,** postcards, & storage containers
- 344 HEN SETTING ON NEST** under a dome
- 345 HALLOWEEN SCENE &** lemonade scene under domes
- 346 SITTING ROOM SCENE &** rural scene under domes
- 347 23" ROOM BOX WITH MINIATURE** colonial furniture
- 348 LOT OF 2 – 12" OVAL WALNUT FRAME SHADOW** box with flowers in a basket, & dome with floral decorations
- 349 19" T X 19 ¾" L THREE DOOR ARMOIRE** with mirror in center door, carvings
- 350 LOT OF 3 – 2 – CHERRY SHAKER CHILD'S ROCKING** chairs with tape seats, & Baby doll
- 351 LOT OF 3 BISQUE HEAD DOLLS** undressed, (as is)
- 352 LOT OF 2 TRAYS OF DOLL SMALLS,** accessories, Halloween items

- 353 2 – MODERN ROOM BOXES/STORE front with contents
- 354 LOT OF ASSORTED PAPER ITEMS, animals, sewing, frames, etc.
- 355 2 – COPIES OF AMERICAN SCHOOL oil paintings of children
- 356 LOT OF 2 FRAMED PRINTS & 1 framed oil on canvas
- 357 LOT OF ASSORTED CLOTHES, cradle, & misc. items
- 358 LOT OF SINGER SEWING MACHINE attachments, etc.
- 359 LOT OF 8 GLASS DOMES of various sizes
- 360 3 – VICTORIAN FRAMED PRINTS of young girls
- 361 GARDEN GAZEBO SCENE under a glass dome
- 362 3 – OVAL FRAMED THEOREM PAINTINGS in gold leaf frames
- 363 LOT OF SMALL ALL BISQUE NAKED BATHERS & naughty dolls

The End of Day 1 - Non-Picture Dolls

Stretch your legs... turn your chairs around

Time for the Extras!!

**Don't forget the Evening Preview for the Nov. 8th Doll Auction
will be in the Ballroom tonight from 7:00 - 9:00 &**

*A Celebration of Kathy Zimmerman's Life with the Dolls!
All are Welcome!*

*Withington Auction, Inc. - November 7 & 8, 2019
There will be no Inspections of dolls / Lots after the auction begins.*

***** EXTRAS Nov. 7, 2019 *****

- E001 Lot of 2 pianos, Schoenhut doll & child's
- E002 Lot of 4 clothe & knit dolls
- E003 Lot of 2 Artist dolls
- E004 Lot of 3 Artist dolls
- E005 Lot of 3 artist dolls including an AT
- E006 Lot of 3 dolls, 2 artist, 1 German on new body
- E007 Lot of 4 dolls, compo Kewpie, celluloid, Grace Story Putnam, & cloth (as is)
- E008 Lot of 3 dolls, Japanese bisque, bonnet head artist doll, & 23" bisque shoulder head (as is)
- E009 Lot of doll china & glassware
- E010 Box lot of doll novelties
- E011 Lot of 8 assorted dolls, 11 ½" comp Kewpie, 10" plastic Cameo Kewpie, 5" all bisque, 2 small porcelain dolls, 1 small celluloid doll, 1 plaster Kewpie, 15" Bisque ABG 1352 (as is)
- E012 Lot of 7 items, 5 small stuffed animals/toys, celluloid head boy, & metal head doll
- E013 23" Bisque "Viola" Made in Germany (as is)
- E014 Lot of small doll furniture
- E015 Lot of 3 artist dolls, 1890's autograph book, etc.
- E016 2 – medium size strap trunks
- E017 Box lot of doll patterns, books, magazines
- E018 Lot of 5 – 2 – travel dolls, nut head doll, Hummel doll, bisque head cushion doll
- E019 Box lot of reference books and catalogs
- E020 Lot of 4 – 2 – cloth dolls, pink rabbit, pink musical lamb
- E021 Box lot of reference books & doll patterns
- E022 Box lot of reference books & doll Patterns
- E023 Box lot of assorted smalls
- E024 Box lot of assorted smalls

- E025 Box lot of small baskets, etc
- E026 Lot of 4 small assorted wood boxes, dresser, etc.
- E027 Box lot of assorted small stuffed animals
- E028 Box lot of assorted smalls
- E029 Box lot of assorted smalls
- E030 Box lot of assorted small, children's books, etc.
- E031 Box lot of doll patterns
- E032 Box lot of doll patterns
- E033 Box reference books & catalogs
- E034 16" Long doll trunk with assorted ribbons
- E035 Box lot of ephemera with interesting Civil War prisoner release
- E036 Box lot of ephemera with Henry Clay memento
- E037 3- Baby Bud porcelain dolls, Googly side glancing painted eyes
- E038 Large Madame Alexander "Agatha" in original box
- E039 5 - Pieces of doll furniture
- E040 Box lot of assorted Christmas items
- E041 Small schoolhouse desk with 6 children
- E042 Box lot of assorted small dolls & china
- E043 Box lot of assorted smalls
- E044 Box lot of assorted smalls
- E045 Box lot of assorted smalls
- E046 Box lot of assorted miniature furniture
- E047 Lot of 3 mohair stuffed animals
- E048 Box lot of assorted doll clothes
- E049 3 – Mohair dogs as is condition

****** The End of Day 1 - Auction ******

Don't forget the Evening Preview for the Nov. 8th Doll Auction

will be in the Ballroom tonight from 7:00 - 9:00 &

A Celebration of Kathy Zimmerman's Life with the Dolls!

All are Welcome!

Auction Tomorrow Preview 8-10am Starts @ 10am

*Withington Auction, Inc. - November 7 & 8, 2019
There will be no Inspections of dolls / Lots after the auction begins.*

November 8, 2019 - Day 2 - Picture Dolls

- 364 LOT OF 8 SHOULDER HEADS**, 3 – 6” Blonde hair chinas, painted features, 1 – 6” Blonde hair parian, painted features, 3 – Black hair chinas 5” – 9”, painted features, 1 – 5 ½” Bisque shoulder head, Germany
- 365 24” S&H 1159 LADY**, BLUE GLASS SLEEP EYES, OM with teeth, PE, mohair wig, BJCB, peach skirt
- 366 13 ½” SIMON & HALBIG 1469 LADY**, blue glass sleep eyes, CM, PE, mohair wig, compo body, white dress, 1st & 3rd place ribbons
- 367 18 ½” BISQUE DEP**, blue glass sleep eyes, OM with teeth, PE, BJCB, mohair wig, maroon pleated skirt, antique shoes
- 368 LOT OF 2 BISQUE KESTNER 143**, 13”, blue glass sleep eyes, open mouth with teeth, mohair wig, BJCB, blue knit outfit, & 11 ½” brown glass sleep eyes, open mouth with teeth, mohair wig, BJCB, white dress
- 369 19” SANTOS TYPE CARVED WOOD**, painted features, CM, PE, on blue/gold painted base, original outfit, 1st place ribbon
- 370 14” BISQUE KESTNER 179**, brown glass sleep eyes, O/CM, mohair wig, BJCB, plaid outfit
- 371 23” BISQUE DEP BEBE JUMEAU**, blue glass sleep eyes, OM with teeth, PE, mohair wig, compo body, white/green floral dress
- 372 14 ½” BISQUE S&H 1279**, blue glass sleep eyes, OM with teeth, blonde mohair wig, PE, BJCB (leg socket repair), white dress
- 373 24” BISQUE KESTNER**, blue glass sleep eyes, CM, blonde mohair wig, BJCB, red dress
- 374 22” BISQUE 1349 JUTTA**, brown glass sleep eyes, OM with teeth, PE, red mohair wig, BJCB, white dress, (wig glued down)
- 375 18” BISQUE 252**, blue glass sleep eyes, OM with teeth, blonde mohair wig, PE, BJCB (left finger repair), white dress
- 376 18” BISQUE 273 DEP**, brown glass sleep eyes, OM with teeth, PE, mohair wig, straight wrist compo body, white dress
- 377 LOT OF 14 ANTIQUE COVERED PORCELAIN BOXES OF VARIOUS FIGURES**, hand painted, 3” – 4 ½” tall, some by Conta & Boehme
- 378 LOT OF 10 ANTIQUE COVERED PORCELAIN BOXES** figures/inkwell, hand painted, 2” to 4 1/2” tall, some by Conta & Boehme
- 379 LOT OF 2 – 6 ½” BISQUE JDK 260**, brown glass sleep eyes, OM with teeth, toddler compo body, mohair wig, red knit outfit, & 8” Bisque 172, brown glass sleep eyes, CM, mohair wig, jointed compo body, white dress



364



365



366



367



368



369



370



371



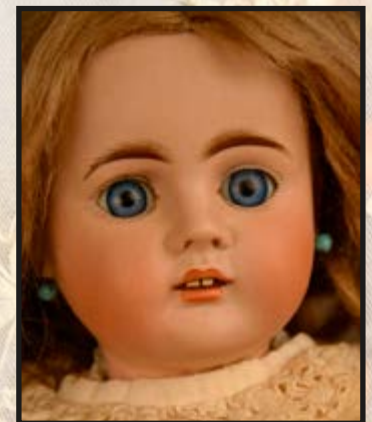
372



373



374



375



376



377



378



379

*Withington Auction, Inc. - Dolls at Auction - November 7th & 8th, 2019
No Inspections of Dolls {51} Lots after the auction begins*



380



381



382



383



384



385



386



387



388



389



390



391



392



393



394



395

*Withington Auction, Inc. - Dolls at Auction - November 7th & 8th, 2019
No Inspections of Dolls {52} Lots after the auction begins*

- 380 LOT OF 2 – 7” BISQUE KESTNER 143**, brown glass sleep eyes, OM with teeth, blonde mohair wig, compo body, original white dress, & 8” Kestner, blue glass sleep eyes, CM, blonde mohair wig, compo body, early white outfit
- 381 LOT OF 2 ALL BISQUE DOLLS** in mirror showcase, 6 ½” blonde hair parian with molded hat, painted features, copper luster shoes & socks, & 4” mohair wig, painted features, copper luster shoes & socks, & 7” brass & glass mirror back case with glass door
- 382 LOT OF 2 BISQUE HEAD DOLLS**, 8 ½” Kestner 143, brown glass sleep eyes, OM with teeth, blonde mohair wig, BJCB (repairs), faint line back of head, no clothes, & 10” S&H
- 1079, BROWN GLASS SLEEP EYES**, OM with teeth, mohair wig, straight leg compo flapper body, painted shoes, white dress, (small hairline front of rim)
- 383 LOT OF 2 BISQUE SOLID DOME HEAD**, 6 ½” blue glass eyes, CM, blonde mohair wig, compo body, & 8 ½” brown glass eyes, CM, PE, jointed compo body, blonde mohair wig, no clothes
- 384 LOT OF 13 ANTIQUE COVERED PORCELAIN BOXES**, 2 1/2” – 4” tall, hand painted, assorted figures, some by Conta & Boehme
- 385 13” FRENCH FASHION, BLUE GLASS EYES**, CM, PE, mohair wig, wood body with bisque arms, antique green walking suit (melting), (damage to left foot, mismatched shoes)
- 386 12 ½” BISQUE 6, BLUE GLASS EYES**, CM, PE, blonde mohair wig, Sonneberg body, no clothes
- 387 15” BISQUE HEUBACH 8420 POUTY FACE**, brown glass sleep eyes, CM, brown mohair wig, BJCB, peach/green dress, (rub marks left side around ear)
- 388 14” BISQUE HEUBACH 10532 CHARACTER**, blue glass sleep eyes, OM with teeth, brown mohair wig, off white outfit
- 389 14” BISQUE BELTON TYPE 9 131?**, blue glass eyes, CM, PE, blonde mohair wig, straight wrist compo body, off white dress
- 390 10” BISQUE 2 FG**, blue glass eyes, CM, PE, straight wrist compo body, blonde mohair wig, white dress, 1st place ribbon
- 391 12 ½” BELTON TYPE 137**, CM, PE, brown glass eyes, BJCB, blonde mohair wig, off white dress, Jumeau shoes
- 392 12 ½” E4J JUMEAU**, blue glass eyes, CM, PE, blonde mohair wig, straight wrist compo body blue stamp Jumeau, white dress
- 393 17” BISQUE KESTNER 8**, blue glass sleep eyes, CM, brown mohair wig, straight wrist compo body, white dress
- 394 15” BISQUE KESTNER 7**, brown glass sleep eyes, CM, blonde mohair wig, straight wrist compo body, white dress, (right eye corner fleck)
- 395 11” FRENCH FASHION 0 7/0**, blue glass eyes, CM, PE, blonde braided mohair wig, kid body, original blue walking dress (wear), (left ear lobe tiny repair)

- 396 14" BISQUE/PARIAN SHOULDER HEAD BOY**, blonde molded hair, blue glass eyes, CM, kid body with bisque arms, white shirt black pants, 2nd place ribbon
- 397 10" BELTON TYPE 1**, blue glass eyes, CM, PE, straight wrist compo body (shoulder damage) blonde mohair wig, antique green dress (melting), (missing tip of right thumb)
- 398 12" BISQUE HEUBACH 7246**, blue glass sleep eyes, CM, brown mohair wig, BJCB red check dress, (peeling above left ear)
- 399 19" BISQUE KESTNER 12**, brown glass sleep eyes, OM with teeth, blonde mohair wig, straight wrist compo body, pink gingham dress
- 400 14" BISQUE BELTON TYPE**, blue glass eyes. CM, blonde mohair wig, Straight wrist compo body, white dress
- 401 6 ¾" ALL BISQUE 2 ½**, blue glass eyes, OM with teeth, red mohair wig, painted high black stockings & brown shoes, red floral dress
- 402 13 ½" BISQUE BELTON TYPE**, blue glass eyes, CM, PE, straight wrist compo body (left hand finger repair), early white dress (soiled), French shoes
- 403 15" BISQUE 903/6**, brown glass eyes, CM, blonde mohair wig, straight wrist compo body, white dress
- 404 17" BISQUE SOLID DOME SHOULDER HEAD**, blue glass eyes, CM, PE, kid body with bisque arms, brown mohair wig, pink dress
- 405 17 ½" BISQUE DOME SWIVEL NECK SHOULDER HEAD 51/8**, blue glass eyes, CM, PE, kid body with bisque arms, blonde mohair wig
- 406 17" BISQUE/BLONDE MOLDED HAIR PARIAN**, blue glass sleep eyes, CM, kid body with bisque arms, pink stripe dress
- 407 15" BISQUE DOME HEAD 51/8**, brown glass eyes, CM, PE, blonde mohair wig straight wrist compo body, corset, early shoes
- 408 12 ½" BISQUE SOLID DOME** shoulder head, blue glass eyes, CM, blonde skin wig, kid body with bisque arms, green dress
- 409 7 ½" BISQUE AM 310 JUST ME**, blue glass sleep eyes to side, CM, mohair wig, compo body, pink dress, UFDC 3rd place ribbon, (rim glue)
- 410 15" BISQUE HEUBACH CHARACTER**, blue glass sleep eyes, OM with bottom 2 teeth, straight wrist compo body, rainbow outfit
- 411 9" BISQUE BELTON TYPE 0**, blue glass eyes, CM, blonde mohair wig, straight wrist compo body, white dress



396



397



398



399



400



401



402



403



404



405



406



407



408



409



410



411

*Withington Auction, Inc. - Dolls at Auction - November 7th & 8th, 2019
No Inspections of Dolls {55} Lots after the auction begins*



412



413



414



415



416



417



418



419



420



421



422



423



424



425



426



427

*Withington Auction, Inc. - Dolls at Auction - November 7th & 8th, 2019
No Inspections of Dolls {56} Lots after the auction begins*

- 412 9 ½" BISQUE BELTON TYPE 1**, blue glass eyes, CM , blonde mohair wig, straight wrist compo body, white dress
- 413 10" BISQUE HEUBACH 7247 POUTY**, blue glass sleep eyes, CM, brown mohair wig, straight wrist compo body, brown velvet pants
- 414 9 ½" BISQUE HEUBACH 6969 CHARACTER GIRL**, blue glass sleep eyes, CM, blonde mohair wig, jointed compo body, white dress
- 415 8 ½" BISQUE HEUBACH 8469** character boy, brown glass sleep eyes, OM with bottom teeth, jointed compo body, black/tan wool outfit
- 416 9" BISQUE HEUBACH 6969 CHARACTER GIRL**, blue glass sleep eyes, CM, blonde mohair wig w/ braids, jointed compo body, German outfit, (minute fleck left eye)
- 417 9" BISQUE AM 310 JUST ME**, blue glass sleep eyes to side, CM, mohair wig, compo body, blue outfit
- 418 8 ½" BISQUE HEUBACH 8420 CHARACTER BOY**, blue glass sleep eyes, CM, blonde mohair wig, jointed compo body, plaid uniform
- 419 13 ½" SHADOW BOX W/6 KEWPIES** & assorted small animals, dolls, & cupboard
- 420 17" BISQUE BELTON TYPE 137**, blue glass eyes, CM, PE, straight wrist compo body, blonde mohair wig, white floral dress, (tiny black spot on left ear)
- 421 17" BISQUE DEP**, blue glass sleep eyes, OM with teeth, brown mohair wig, BJCB, yellow dress
- 422 8 ½" ALL BISQUE**, blonde molded hair with red ribbon, blue glass eyes, CM, yellow painted boots, pink knit outfit, 2 1st place ribbons
- 423 10" BISQUE BELTON TYPE**, blue glass eyes, CM, PE, blonde skin wig, straight wrist compo body, antique blue dress & shoes
- 424 14" BISQUE 117 DOME HEAD**, blue glass eyes, CM, PE, blonde mohair wig, straight wrist compo body, no clothes, antique shoes (nick in dome head)
- 425 2 – ALL BISQUE DOLLS, 6" 118**, blue glass eyes, OM with teeth, PE, blonde mohair wig, white dress, painted shoes & socks, & 6" 153?, brown glass sleep eyes, OM with teeth, blonde mohair wig, blue dress, painted shoes & socks
- 426 13" BISQUE R 4/0 D** (Raybery & Delphieu), brown glass eyes, CM, PE, blonde mohair wig, straight wrist compo body, white dress, 2nd place ribbon, (touchup left ear)
- 427 13" BISQUE 905 SWIVEL NECK**, blue glass eyes, CM, PE, blonde mohair wig, kid body with bisque arms, pink corset

- 428 16 ½" BISQUE BELTON TYPE 137**, brown glass eyes, CM, PE, brown mohair wig, straight wrist compo body, antique maroon dress & shoes
- 429 17" BISQUE WSK 2** (Wiesenthal, Schindel & Kallenberg) boy, blue glass sleep eyes, OM with teeth, brown mohair wig, BJCB, blue coat, 1st place ribbon
- 430 2 – DRESSEL & KISTER CHINA HEAD DOLLS**, 12" woman, blonde molded hair with flowers, painted features, kid body with china arms, white outfit, & 13" man, gray molded hair, ptd.features, cloth body china arms & legs, brown shirt, 1st place ribbons
- 431 13" PINK TINT BLACK HAIR CHINA**, painted features, cloth body with wood arms & legs, blue ptd. shoes, pink dress, (firing line on left shoulder & firing flaw neck front)
- 432 24" BISQUE S&H 719**, blue glass eyes, OM with teeth, PE (left nick), blonde mohair wig, straight wrist compo body (arm repair), peach dress
- 433 2 – PAPER MACHE DOLLS**, 11 ½" black hair with bun & side curls, painted features, kid body with wood arms & legs (missing right foot, left foot repair), brown long outfit, & 12" black hair, painted features, kid body with wood arms & legs (upper body rough at arms), no clothes, wear to both
- 434 7" ALL BISQUE ORIENTAL**, dark glass eyes, CM, black mohair, painted shoes & socks, Oriental dress
- 435 7" ALL BISQUE KESTNER 102**, brown glass eyes, OM teeth, PE, yellow painted boots, blonde mohair wig, knit outfit, white covered fur dog, (scratch on right cheek)
- 436 7" ALL BISQ. KESTNER 0**, blue glass sleep eyes, CM, blonde mohair wig, knit dress
- 437 10 ½" ALL BISQUE KESTNER 140 12**, brown glass eyes, O/CM, brown mohair wig, painted brown shoes, red dress, white socks, 1st & 2nd place ribbons
- 438 9 ½" ALL BISQUE KESTNER 4**, blue glass sleep eyes, OM with teeth, blonde mohair wig, blue dress
- 439 9 ½" BISQUE 241 0 GOOGLY**, blue glass sleep eyes side glancing, watermelon mouth, blonde mohair wig braids, blue floral dress, compo body, (pock mark right nostril)
- 440 2 – ALL BISQUE KEWPIE DOLLS**, 12" right side glancing eyes, jointed arms, blue wings, & 10 ½" left side glancing eyes, jointed arms, blue wings, (back head rub), both feet signed O'Neill
- 441 8 ½" ALL BISQUE S&H 886**, blue glass sleep eyes, OM with teeth, blonde mohair wig, black painted shoes, blue painted socks with 5 straps, (left eye tiny fleck, tiny dark spot right upper cheek), white dress
- 442 12" TALL VELVET COVERED SEDAN CHAIR** with seat & glass sides with front opening glass door, 2 side handles (damaged) & 6 ½" tall bisque head Jester on music box base with turned handle, music box works, but needs work to secure the handle
- 443 8 ½" ALL BISQUE GK SOLID DOME**, blue glass eyes, CM, painted boots & socks, blonde mohair wig, early purple dress with parasol



428



429



430



431



432



433



434



435



436



437



438



439



440



441



442



443

*Withington Auction, Inc. - Dolls at Auction - November 7th & 8th, 2019
No Inspections of Dolls {59} Lots after the auction begins*



444



445



446



447



448



449



450



451



452



453



454



455



456



457



458



459

*Withington Auction, Inc. - Dolls at Auction - November 7th & 8th, 2019
No Inspections of Dolls { 60 } Lots after the auction begins*

- 444 27" BISQUE KESTNER 16**, blue glass sleep eyes, CM, brown mohair wig, jointed compo body, brown/white outfit
- 445 21" BISQUE KESTNER 14**, blue glass sleep eyes, CM, brown mohair wig, straight wrist compo body, white dress
- 446 25" BISQUE S&H 979**, blue glass sleep eyes, OM with teeth, PE, brown mohair wig, straight wrist compo body, white dress
- 447 10 ½" BISQUE S&H 1009**, blue glass eyes, OM with teeth, PE, blonde mohair wig, straight wrist compo body, red dress
- 448 10" BISQUE SHOULDER HEAD**, brown glass eyes, CM, PE, kid body with bisque arms, blonde mohair wig, white outfit, no shoes
- 449 13" BISQUE W.D 6 (Wilhelm Dehler) Jumeau look**, Blue glass eyes, CM, PE, blonde mohair wig, straight wrist compo body (some repaint), blue/white stripe dress
- 450 13" BISQUE 7 SONNENBERG TYPE**, blue glass eyes, O/CM, PE, blonde mohair wig, straight wrist compo body, blue silk outfit
- 451 14" BISQUE 6 PORTRAIT JUMEAU**, blue glass eyes, CM, PE, blonde mohair wig, straight wrist blue label Jumeau body, red dress
- 452 12 – MINIATURE CARL HORN bisque head dolls** in various knitted outfits about 1 ½" tall & small basket
- 453 13 - MINIATURE CARL HORN BISQUE HEAD DOLLS** in various knitted outfits about 1 ½" tall, in small early basket with legs
- 454 8 ½" ALL BISQUE KESTNER 102**, blue glass eyes, OM with teeth, PE, blonde mohair wig, white dress with small teddy bear, black painted boots
- 455 7 ½" ALL BISQUE KESTNER 2**, blue glass sleep eyes, CM, blonde mohair wig, black paint high stockings, light brown shoes, white/pink dress
- 456 3 – 4" DRESSEL & KISTER "NAUGHTY NUDIES"** ptd. china in various poses
- 457 12" BISQUE SHOULDER HEAD BOY**, brown glass eyes, OM, blonde sculpted hair, kid body with bisque arms white/burgundy outfit
- 458 9" BISQUE BELTON TYPE 1**, blue glass eyes, CM, PE, brown mohair wig, straight wrist compo body, blue dress
- 459 5 ½" ALL BISQUE KESTNER 208**, blue glass eyes, CM, blonde mohair wig, yellow painted boots, beige dress

460 2 – 5” ALL BISQUE WITH YELLOW PAINTED BOOTS, 1 – 184, brown glass sleep eyes, CM, blonde mohair wig, pink dress, & 1 – 203, blue glass eyes, CM, blonde mohair wig, knit outfit

461 2 – ALL BISQUE WITH YELLOW PAINTED BOOTS, 1 – 3 ½” Kestner 205, brown glass eyes, CM, blonde mohair wig, white knit dress, & 6 ½” Kling 36, brown glass eyes, CM, blonde mohair wig, red dress

462 3 – ALL BISQUE WITH YELLOW PAINTED BOOTS, 1 – 4” 40, brown glass eyes, CM, blonde mohair wig, knit dress, 1 – 4” 208, painted features, blonde mohair wig, pink knit dress, & 1 – 3” 208, painted features, blonde mohair wig, no clothes

463 5 ½” ALL BISQUE DOME HEAD, painted features, CM, blonde mohair wig, yellow boots, white dress, UFDC 3rd place ribbon

464 LOT OF 3 MINIATURE METAL CARRIAGES 2 ½” – 3 ¼” long with assorted small all bisque & Carl Horn dolls

465 9” BISQ. S&H 1079, blue glass sleep eyes, OM w/ teeth, PE, blonde mohair wig, jointed all bisque body w/ painted black stockings & brown strap shoes, no clothes

466 14 ½” BISQUE “JOAN OF ARC” FASHION HEAD in metal armor outfit, blue glass eyes, CM, jointed medieval soldier outfit with Paris label

467 3 – 7” WAX VARGAS DOLLS IN VARIOUS SETTINGS depicting black men & women on wood bases

468 7” BISQUE AM GOOGLY, brown glass side glancing eyes, watermelon mouth, painted shoes & socks, mohair wig (glued down), original clothes, compo body

469 13” BLACK HAIR WOODEN TUCK COMB, painted features (some touch up), peg wooden body, UFDC 2nd place ribbon

470 6 – 4 ½” – 6” ALL BISQUE GERMAN DOLLS, 792, 150, 5 – painted features, CM. blonde sculpted hair, 1 – blue glass eyes with molded cap, all have painted shoes & socks, 4 have clothes

471 13” BISQUE HEAD 170, mechanical clown with bellows base, painted features, when bellows are pumped clown moves his head & right arm like he was blowing into the pan (pan reglued to hand), original outfit

472 3 – PAPER MACHE BLACK HAIR DOLLS, 6 ½”- 8”, 8” Apollo hairdo, painted features, kid body with wood arms & legs, (head loose from body), 7 ½” painted features, peg wooden body, & 6 ½” painted features, cloth body with wood arms & legs

473 7 ½” ALL BISQUE KESTNER 0 “WRESTLER”, blue glass sleep eyes, CM, blonde mohair wig, painted 4 strap black boots. no clothes, right eyebrow rub

474 LOT OF 2 – 7” BISQUE BELTON TYPE, blue glass eyes, CM, blonde mohair wig, straight wrist jointed compo body, knit dress, & 6” All bisque, blue glass eyes, CM, blonde mohair wig, painted shoes & socks, knit dress

475 12” BISQUE BELTON TYPE 6, BLUE GLASS EYES, CM, PE, blonde mohair wig, straight wrist compo body, white dress



460



461



462



463



464



465



466



467



468



469



470



471



472



473



474



475

Withington Auction, Inc. - Dolls at Auction - November 7th & 8th, 2019
No Inspections of Dolls {63} Lots after the auction begins



476



477



478



479



480



481



482



483



484



485



486



487



488



489



490



491

*Withington Auction, Inc. - Dolls at Auction - November 7th & 8th, 2019
No Inspections of Dolls {64} Lots after the auction begins*

- 476 13 ½" PARIAN, BLUE GLASS EYES, CM**, blonde sculpted hair, kid body with bisque arms, early dark blue outfit, green ribbon
- 477 11" ALL BISQUE "WRESTLER"**, blue glass eyes, CM, brown mohair wig with braids, cream/black painted boots, blue dress, with white fur rabbit, 2- UFDC 2nd place ribbons
- 478 15" BISQUE HEUBACH "DOLLY DIMPLE"**, blue glass sleep eyes, OM with teeth, brown mohair wig, BJCB, blue dot/white dress, (tiny ear rub)
- 479 9" ALL BISQUE "WRESTLER" 102**, blue glass eyes, OM with teeth, PE, blonde mohair wig, painted 5 strap black boots, plaid dress
- 480 8 ½" BISQUE DOME HEAD FASHION TYPE**, blue glass eyes, CM, cloth body with bisque arms & legs, blonde mohair wig, white dress
- 481 5 – SMALL ALL BISQUE DOLLS 2" – 3 ½"**, 2 – larger dolls have glass eyes, 3- smaller dolls have painted features, early outfits, painted shoes/socks, in small glass case
- 482 8 ½" BISQUE HEUBACH 8420 POUTY**, brown glass eyes, CM, bent elbow compo body, brown mohair wig, blue outfit
- 483 11 ½" BISQUE HEUBACH 7245? POUTY CHILD**, brown glass sleep eyes, CM, blonde mohair wig, BJCB, blue dress
- 484 LOT OF 3 SMALL ALL BISQUE DOLLS, 3 ½" – 4 ½"**, 2- blue glass eyes, CM, blonde mohair wigs, painted shoes & socks, early clothes, 1 – painted features, blonde mohair wig, no clothes
- 485 LOT OF 6 DRESSEL & KISTER HALF DOLLS 3" – 4"**, painted features, 3 – holding flowers
- 486 10 ½" BISQUE HEUBACH 8420**, blue glass sleep eyes, CM, BJCB, blonde mohair wig, pink dress
- 487 6" ALL BISQUE DOME HEAD, BLUE GLASS EYES, CM**, blonde mohair wig, painted shoes & socks, early outfit
- 488 6" ALL BISQUE KESTNER 1**, brown glass sleep eyes, CM, blonde skin wig, blue painted boots, early outfit
- 489 11" BISQUE HEUBACH 7246 CHARACTER**, blue glass sleep eyes, CM, blonde mohair wig, BJCB, white sailor outfit
- 490 6" ALL BISQUE, BLUE GLASS EYES, CM**, blonde mohair wig, brown painted shoes, blue dress
- 491 10" HEUBACH 6970**, blue glass sleep eyes, CM, brown mohair wig, BJCB, red skirt w/small doll

- 492 4 – “ARMS AWAY HALF DOLLS, 3” – 5”**, painted features, various arm poses
- 493 5 – “ARMS AWAY” HALF DOLLS, 2 ½” – 4”** painted features, various arm poses, one with UFDC 3rd place ribbon
- 494 13” BISQUE/PARIAN SHOULDER HEAD**, Blue glass eyes, blonde sculpted hair with blue ribbon, CM, kid body with bisque arms, blue dress, UFDC 2nd place ribbon
- 495 LOT OF 2 – 10 ½” BISQUE /Parian shoulder head**, brown glass eyes, CM, blonde sculpted hair, kid body with bisque arms, red/white polka dot dress, & 9” Bisque 1, brown glass eyes, CM, blonde sculpted hair, straight wrist compo body, black sweater
- 496 8” ALL BISQUE LLL “WRESTLER”**, blue glass sleep eyes, CM, blonde mohair wig, painted black 5 strap boots, no clothes, (rim rough spot)
- 497 2 – 6” ALL BISQUE KESTNER 0**, brown glass eyes, OM with teeth, blond mohair wig, painted boots, gray & black, no clothes
- 498 LOT OF ASSORTED SMALL DOLLS**, heads, etc.
- 499 13” BISQUE FRENCH LADY**, painted features, blonde mohair wig, cloth body with bisque arms, bisque black high stocking legs, UFDC 2nd place ribbon
- 500 13” BISQUE MOLDED SHOULDER HEAD**, brown glass eyes, CM, blond molded hair, cloth body with leather arms, white dress, early boots & stockings
- 501 12” PARIAN, SCULPTED HAIR** with gold/black snood, collar with red painted ribbon, painted features, early outfit & shoes, no hands, in black walnut case
- 502 26” BISQUE S&H 769**, blue glass sleep eyes, CM, PE (tiny chip left ear), brown mohair wig, BJCB, white dress
- 503 LOT OF ALL BISQUE SMALL DOLLS & figures** under 3”, some potty dolls
- 504 2 – 16” PORCELAIN FIGURES OF MAN & WOMAN** with blue anchor mark, painted features, elaborate dress & decorations
- 505 22” BISQUE KESTNER 168**, brown glass sleep eyes, OM with teeth, black mohair wig, BJCB, blue/white outfit
- 506 LOT OF 8 ALL BISQUE DOLLS, 3 ½” – 5 ½”**, flapper style, painted features, 3 no clothes
- 507 2 – ALL BISQUE, 7”**, blue glass eyes, OM with teeth, blonde mohair wig, painted shoes & socks, & 5 ½” 2/0, blue glass eyes, CM, blonde mohair wig, painted shoes & socks



492



493



494



495



496



497



498



499



500



501



502



503



504



505



506



507

Withington Auction, Inc. - Dolls at Auction - November 7th & 8th, 2019
No Inspections of Dolls {67} Lots after the auction begins



508



509



510



511



512



513



514



515



516



517



518



519



520



521



522



523

Withington Auction, Inc. - Dolls at Auction - November 7th & 8th, 2019
No Inspections of Dolls {68} Lots after the auction begins

- 508 2 – ALL BISQUE**, 7 ½” blue glass eyes, blonde mohair wig, white dress, painted shoes & socks, & 2 ¾” painted features, blonde mohair wig, knit dress, painted shoes & socks
- 509 12 – 6 ½” – 7” MADAM ALEXANDER** dolls in assorted outfits
- 510 2 – ALL BISQUE “WRESTLERS”**, 6 ½” 203, blue glass eyes, CM, blonde mohair wig, yellow painted boots, no clothes, & 5 ½” painted features, blonde mohair wig, yellow painted boots, no clothes, (hairline back of head)
- 511 14” BISQUE 51/7**, brown glass sleep eyes, OM with teeth, PE, blonde mohair wig, straight wrist compo body, pink dress
- 512 2 ALL BISQUE DOLLS, 6 ½” KESTNER 2**, blue glass sleep eyes, CM, blonde mohair wig, red dress, & 4 ½” blue glass eyes, CM, blonde mohair wig, white dress
- 513 15” BISQUE 3 ½ STEINER?**, blue glass eyes, CM, PE, straight wrist compo body, blonde mohair wig, knit dress
- 514 11 ½” BISQUE CHARACTER BOY (1407?)**, brown glass sleep eyes, CM, blonde mohair wig, BJCB, knit sweater
- 515 12” BISQUE HEUBACH 7660**, blue glass sleep eyes, OM with tongue, blonde mohair wig, BJCB, red outfit, (rim glue)
- 516 19” BLONDE HAIR PARIAN**, painted features, sculpted hair, PE, cloth body with leather arms (replaced), white outfit
- 517 17” BISQUE KESTNER 171**, blue glass sleep eyes, OM with teeth, brown mohair wig, BJCB, white dress, (rim glue)
- 518 8” ALL BISQUE KESTNER 111 “WRESTLER”**, brown glass sleep eyes, CM, blonde mohair wig, high painted gray boots, no clothes, in the making flaw on chest
- 519 6 – SMALL ALL BISQUE DOLLS, 2 ½” – 3 ½”**, painted features, painted socks & shoes, 3 dressed, 3 no clothes
- 520 2 – 3” WHEELED WIRE CARRIAGES**, with assorted small all bisque dolls (11)
- 521 8” SILK COVERED BOX WITH 5 PARTIAL SMALL ALL BISQUE DOLLS**, including a S&H 1160 shoulder head
- 522 2 – ALL BISQUE DOLLS, 7”** blue glass eyes, CM, brown mohair wig, blue painted socks w/ black shoes, knit outfit, & 6” stiff neck, blue eyes, CM, blonde mohair wig, Pink painted socks W/black shoes
- 523 13” DRESSEL & KISTER PORCELAIN HALF DOLL** dressed in a large antique outfit, painted features, blue ribbon in hair, UFDC blue ribbon

524 9" BISQUE GOEBEL GOOGLY, right side glancing eyes, painted features, compo body, UFDC blue ribbon

525 2 - ALL BISQUE DOLLS, 9" KESTNER 150, blue glass sleep eyes, OM with teeth, blonde mohair wig, painted blue socks w/black shoes, white dress, & 7" Kestner 172, blue glass sleep eyes, CM, blonde mohair wig, white painted shocks w/black shoes

526 4 - SMALL ALL BISQUE DOLLS, 4" Kestner's, 2 - 620, 3 - swivel neck, glass eyes, blonde mohair wigs, painted socks & shoes, 3 - dressed

527 8" BISQUE GOOGLY AM 323, blue left side glancing eyes, watermelon mouth, brown mohair wig, compo body, costume dress

528 7 ½" ALL BISQUE KESTNER 2 ½, blue glass sleep eyes, CM, blonde mohair wig with braids, knit dress

529 6 - SMALL ALL BISQUE 2 ½" - 4 ½", painted features, painted socks & shoes, all dressed

530 3 - ALL BISQUE DOLLS, 2 - KESTNER 310, 1- 301 stiff neck, glass eyes, CM, blonde mohair wigs, 1 - knit dress, 2- no clothes, yellow painted socks w/black shoes

531 8" ALL BISQUE BLACK DOLL 61, dark glass eyes, closed mouth, black mohair wig, (excessive wig glue & pulls back of head)

532 8 ½" ALL BISQUE BLACK DOLL 3, dark glass eyes, CM, black mohair wig, no clothes

533 2 - ALL BISQUE DOLLS, 8" KESTNER 257, brown glass sleep eyes, OM with teeth, blonde mohair wig, painted white socks w/ black shoes, white dress, & 8" Kestner 150, blue glass sleep eyes, OM with teeth, blonde mohair wig, blue painted socks w/black shoes, white dress

534 9 ½" ALL BISQUE KESTNER 14 "WRESTLER", brown glass eyes, OM with teeth, blonde mohair wig, painted white socks w/black shoes, hat, no clothes

535 2 - BISQUE HEAD SCULPTED HAIR DOLLS, 12" Revalo, painted features, OM with teeth, BJCB, blue dress, & 13 ½" Revalo, painted features, OM with teeth, BJCB, blue dress

536 2" GOLD POCKET WATCH CASE WITH 2 - 7/8" peg wooden dolls with bisque heads under glass case

537 LOT OF 10 ALL BISQUE DOLLS. Painted features, 2" - 3 ¾", in various positions

538 12" BISQUE WITH BLONDE SCULPTED HAIR, blue glass eyes, CM, cloth body with bisque arms & legs, orange painted boots

539 2 - ALL BISQUE DOLLS, 8" - blue glass eyes, OM with teeth, blonde mohair wig, painted blue socks w/black shoes (large forehead repair), & 8 ½" 949, blue glass eyes, OM with teeth, PE, blonde mohair wig, blue painted socks w/black shoes



524



525



526



527



528



529



530



531



532



533



534



535



536



537



538



539

*Withington Auction, Inc. - Dolls at Auction - November 7th & 8th, 2019
No Inspections of Dolls {71} Lots after the auction begins*



540



541



542



543



544



545



546



547



548



549



550



551



552



554



555



556

*Withington Auction, Inc. - Dolls at Auction - November 7th & 8th, 2019
No Inspections of Dolls {72} Lots after the auction begins*

- 540 8 ½" ALL BISQUE S&H 886**, blue glass sleep eyes, OM with teeth, blonde mohair wig, painted high black socks w/brown strap shoes
- 541 3 – SMALL BISQUE DOLLS**, 1 – 7" S&H WSK, brown glass sleep eyes, OM with teeth, blonde mohair wig, compo body, no clothes, 1 – 7" Bisque, blue glass sleep eyes, OM with teeth, brown mohair wig, compo body, green dress, & 7" 449, brown glass sleep eyes, OM with teeth, brown mohair wig, compo body, no clothes
- 542 4 – SMALL BISQUE DOLLS**, 1 – 6" Black bisque, dark glass sleep eyes, OM with teeth, compo body, stripe dress, ptd.shoes & socks, 1 – 5 ½", blue glass sleep eyes, OM teeth, blonde mohair wig, compo body, no clothes, ptd.shoes & socks, 1 – 4 ½" brown glass sleep eyes, OM teeth, blonde mohair wig, knit dress, ptd.shoes & socks, & 1 – 5" brown glass eyes, OM blonde mohair wig, compo body, ptd.shoes- socks, pink dress
- 543 14" BISQUE BAHR & PROSCHILD 224**, blue glass eyes, blonde mohair wig, OM with teeth (2 tiny chips), PE, straight wrist compo body, white dress
- 544 16" BISQUE S&H 1039**, blue glass flirty eyes, OM with teeth, PE, blonde mohair wig, BJCB, green dress (melting), (excess wig glue)
- 545 18" BISQ. K*R SIMON HALBIG 121**, brown glass sleep eyes, OM teeth/tongue, blonde mohair wig, toddler compo body, white shorts, (left ear in making rough spot)
- 546 18" BISQUE HEUBACH 5777 "DOLLY DIMPLE"**, blue glass sleep eyes, OM with teeth, brown mohair wig, BJCB, blue dress
- 547 19" BISQUE K*R SIMON HALBIG**, blue glass sleep eyes, OM with teeth, brown mohair wig, flapper compo body, gray felt dress (Giny)
- 548 19" BISQUE S&H 1349**, brown glass sleep eyes, OM with wig, PE, blonde mohair wig, jointed compo body, white dress (flake above right ear)
- 549 19" BISQUE HANDWERCK 109**, brown glass eyes, OM with teeth, PE (left PE chip), brown mohair wig, BJCB
- 550 18" Bisque Circle Dot Bru 6 Bte S C D C** on forehead, bulging brown glass eyes, O/CM painted teeth, PE, blonde mohair wig, blue stamp Jumeau compo body, white underwear, (possible repair above right eye)
- 551 2 – 16" BISQUE FIGURINES OF BOY & GIRL HOLDING A DOLL**, painted features, blue outfits on raised floral base, probably German
- 552 5 – SMALL ALL BISQUE DOLLS** 1 ½" – 4 ½" in blue paint decorated 6" metal bed, dolls have painted features, 2 – clothed, 3 – undressed
- 553 2 – BLACK HAIR COVERED WAGON CHINA'S**, 1 – 13" brown painted eyes, slight pink tint, cloth body with china arms, red dress & shoes, & 1 – 13" blue painted eyes, cloth body with china arms & legs, brown dress (NO Picture)
- 554 6 – DRESSEL & KISTER BATHING BEAUTIES**, 4" – 5 ½", mohair wigs, painted features, various poses, 3 – clothed, 3 – dressed in bathing suits
- 555 12" BISQUE DOME SHOULDER HEAD**, blue glass eyes, CM, kid body with bisque arms (loose arms), blonde mohair wig, original outfit
- 556 13" BISQUE DOME SHOULDER HEAD**, brown glass eyes, CM, PE, blonde mohair wig, cloth body with bisque arms, original outfit

The End of Day 2 Picture Dolls - Time Non Pictured Dolls

*Withington Auction, Inc. - November 7 & 8, 2019
There will be no Inspections of dolls / Lots after the auction begins.*

Day 2 - November 8, 2019 - Non-Picture Dolls

557 3 – BISQUE HEAD DOLLS, 18" AM 390, blue glass eyes, OM with teeth, mohair wig, straight leg compo body, white dress, 14" 1894, blue glass eyes, OM with teeth, synthetic wig, straight leg compo body, & 13" AM 390, blue glass eyes, OM with teeth, mohair wig, straight leg compo body

558 18 ½" SCHOENHUT, PAINTED FEATURES (face & head touch up), mohair wig, wood body, Schoenhut pin

559 3 – BISQUE DOLLS, 14" FLORADORA, blue glass sleep eyes, OM with teeth, mohair wig, straight leg compo body, 12" bisque shoulder head 1901, brown glass eyes, OM with teeth, mohair wig, cloth body, & 15" bisque shoulder head Germany, brown glass sleep eyes, OM with teeth, mohair wig, cloth body

560 3 – BISQUE DOLLS, 12" BISQUE SHOULDER HEAD, blue glass eyes, OM with teeth, mohair wig, kid body, 15" "Alice" bisque shoulder head, brown glass eyes, OM with teeth, mohair wig, cloth body, & 18" bisque shoulder head 3500, brown glass sleep eyes, OM with teeth, HH wig, cloth body

561 25" BISQUE GERMANY HEINRICH HANDWERCK Simon Halbig, blue glass eyes, PE, OM with teeth, mohair wig, BJCB, white dress

562 2 – BISQUE DOLLS, 18" FLORADORA, blue glass eyes, OM with teeth, mohair wig, BJCB, & 19" bisque shoulder head Germany, blue glass eyes, OM with teeth, mohair wig, cloth body

563 15 ½" BISQUE SHOULDER HEAD DEP 154, brown glass sleep eyes, OM with teeth, mohair wig, kid body, white dress

564 3 SMALL BISQUE DOLLS, 8" 24 GERMANY, blue glass sleep eyes, OM with teeth, mohair wig, original outfit, 5" all bisque, brown glass eyes, CM, painted shoes & socks, 7 ½" S&H 1909 dark bisque, brown glass eyes, OM with teeth, mohair wig, straight leg compo body

565 30" L x 31" T JOEL ELLIS STYLE CARRIAGE, wood wheels, red stencil design, fringe top, small quilt

566 LOT OF 7 MODERN CARVED wooden dolls

567 5 – VARGAS DOLLS & accessories (as is)

568 LOT OF 9 PAPER MACHE heads (as is)

569 LOT OF 4 CRECHE figures (as is)

570 18" MODERN TUCK COMB DOLL, 2 – Mason/Taylor doll bodies, etc.

571 LOT OF 12 MODERN elderly dolls including 2 Mary Whittier

572 LOT OF 6 artist dolls

573 LOT OF ARTIST DOLLS including 2 – Bings

574 4 – EARLY PAPER MACHE dolls, wood limbs, (as is)

575 LOT OF MODERN COLLECTIBLE dolls & wax dolls

576 LOT OF ARTIST COLLECTIBLE wood dolls

- 577 5 – PAPER MACHE DOLLS**, 1 with brown pupiless eyes (as is)
- 578 3 – SMALL WAX/ WAX OVER COMPO** head dolls, 1 Motchman (as is)
- 579 14” SCHOENHUT BABY BOY**, 14” tin head, (as is)
- 580 LOT OF 5 MEDIUM SIZE WAX/WAX-over** compo head dolls, early clothing (as is)
- 581 3 – LARGE WAX/WAX over** compo head dolls in early clothing, (as is)
- 582 3 – LARGE WAX/WAX over** compo head dolls in early clothing, (as is)
- 583 3 – COMPOSITION** dolls (as is)
- 584 WAX DOLL UNDER GLASS DOME & tele** cover doll by Anton Lang 1930, (as is)
- 585 LOT OF 4 DOLLS – 15” Ideal Toni** , 15” Annie Oakley by American Character, 15” Effanbee Tintair doll, & 14” Sweet Sue by American character, all have original tags/labels
- 586 LOT OF 4 DOLLS**, 16” Ideal hard plastic, 15” R&B Sonja Hen??? Skater, 13 ½” Ideal Toni, & 15” Snow White by Walt Disney
- 587 LOT OF 2 – 24” BISQUE K*R SIMON & HALBIG 126 BABY**, blue glass eyes, OM with teeth, mohair wig, baby compo body, & 17” bisque AM 390, blue glass sleep eyes, OM with teeth, blonde mohair wig, BJCB
- 588 LOT OF 2 – 30” BISQUE QUEEN LOUISE GERMANY 13**, blue glass eyes, OM with teeth, mohair wig, white dress, BJCB, & 19” bisque Lilly, blue glass sleep eyes, OM with teeth, mohair wig, green stripe dress, kid body
- 589 LOT OF 2 - 25” BISQUE GERMANY G 327 B AM** character, brown glass sleep eyes, OM with teeth, mohair wig, white dress, BJCB, & 10 ½” wood Santa, painted features, red felt/fur outfit
- 590 LOT OF 2 – MARSHAL FIELDS & Co.** antique button lace shoes, brown leather & 13 ½” cloth doll, painted features, early outfit
- 591 LOT OF 2 – WICKER DOLL CARRIAGE & doll** canopy bed
- 592 LOT OF 2 – 15” BISQUE K*R SIMON HALBIG 126**, blue glass sleep eyes, OM with teeth, mohair wig, antique peach dress, BJCB, 18” felt Lenci, painted features, red/blue felt dress (faded)
- 593 42” L JOEL ELLIS TYPE 2 WHEEL PULL CART**, red paint with yellow trim, stenciled wheels, surrey top with fringe, long wood handle
- 594 22” BISQUE HEUBACH – Koppelsdorf** baby, blue glass eyes, OM with teeth, mohair wig, baby compo body, blue outfit
- 595 19” BISQUE JUTTA 1914**, blue glass sleep eyes, OM wobbly tongue, mohair wig, BJCB, (hairline back of head), dressed in rabbit outfit
- 596 LOT OF 5 3 ½’ BISQUE HEAD/ALL BISQUE DOLLS** dressed in Sweden, Norway, & Italy costumes

- 597 LOT OF 5 ITEMS, CELLULOID DOG**, celluloid baby in basket, Christmas stocking with child, china baby in tub, bisque head flower
- 598 LOT OF 6 – 11” PINK FUR PIG WITH GLASS EYES**, 9” white musical lamb, paper doll lot, 6” Lenci zipper pocketbook, 2 bisque babies in bed, & pull cart with 2 4” all bisque dolls dressed as rabbits
- 599 LOT OF 2 – 10 ½” BISQUE SFBJ 236**, blue glass sleep eyes, O/CM with teeth, mohair wig, white dress, BJCB, & 10” bisque K*R Simon Halbig 126, blue glass eyes, OM with teeth, mohair wig, pink knit outfit, compo body
- 600 22” BISQUE KESTNER 146**, brown glass sleep eyes, OM with teeth, synthetic wig, BJCB, pink dress, (forehead repair)
- 601 LOT OF 2 – 13” BISQUE 248 DEP**, brown glass sleep eyes, OM with teeth, PE, mohair wig, BJCB, & 13” Bisque ABG 1367, brown glass eyes, OM with teeth, mohair wig, BJCB, red dress
- 602 LOT OF 2 – 13 ½” BISQUE K*R 126**, blue glass eyes, OM with teeth, mohair wig, compo body, & 20” Bisque K*R, blue glass eyes (eyes need to be reset), OM with teeth, mohair wig, compo body with crier
- 603 LOT OF 2 – 20” BISQUE BSW IN HEART**, blue glass eyes, OM with teeth, mohair wig, compo body, white dress, & 19” Bisque Germany C, brown glass sleep eyes, OM with teeth, mohair wig, BJCB, pink dress
- 604 LOT OF 2 – 16” BISQUE MADE IN GERMANY**, blue glass sleep eyes, OM with teeth, mohair wig, BJCB, pink & white dress, & 15 ½” Bisque K*R 121, blue glass sleep eyes, OM with teeth, mohair wig, BJCB, white dress
- 605 LOT OF 3 – 19” EFFANBEE COMPO**, green sleep eyes, CM, red mohair wig, pink dress, 19” Madame Alexander, sleep eyes, OM, blonde mohair wig, pink dress, & 14” Late model K*R brown eyes, OM, cloth body, pink dress
- 606 LOT OF 4 ASSORTED MUSIC BOXES 4 ½” TO 6”**, wood cases with 3 - decorated lids, 1 - a Thorens
- 607 LOT OF 2 – 9 ½” BISQUE CHRISTMAS ANGEL S&H 1909**, blue glass eyes, OM with teeth, straight leg compo body, & 12” Bisque GB, blue glass sleep eyes, OM with teeth, mohair wig, straight leg compo body, dressed as an Angel
- 608 LOT OF 2 – 18” BISQUE K&H 160-9**, blue glass sleep eyes, OM with teeth, mohair wig, white dress, & 17 ½” Bisque Unis France 251, blue glass sleep eyes, OM with teeth, mohair wig, BJCB, pink dress
- 609 LOT OF 2 – 9 ½” BISQUE CANDY CONTAINER AM 390**, blue glass eyes, OM with teeth, painted arms & legs, compo body on candy container, 8 ½” Bisque 1053, blue glass sleep eyes, OM with teeth, mohair wig, compo body, pink & white dress
- 610 9” WHITE STEIFF LAMB**, 7” German white fur cat with pull string squeaker, 4 – early small doll purses
- 611 OPPORTUNITY BOX LOT**, clothes, wig, baskets, & salt & pepper shaker
- 612 BOX OF MISTRESS MARY HANDKERCHIEFS BY GERALDINE CLYNE**, Box of Old King Cole handkerchiefs by Geraldine Clyne, & wind up toy xylophone
- 613 LOT OF 2 – COMPO 2 FACED BOY 15”**, & 14” German two faced character, brown glass eyes, cloth body, white dress
- 614 LOT OF 2 – 13” BISQUE JDJ 257** character baby, blue glass sleep eyes, OM with teeth, mohair wig, compo body, pink dress, & 12” Bisque 6789 Gaine & Seyfonth, brown glass sleep eyes, OM with teeth, no wig or clothes, compo body (as is)
- 615 LOT OF 2 – 12” BLACK BISQUE AM 1894**, brown glass sleep eyes, OM with teeth, black wig, BJCB, blue/red outfit, & 8” Black bisque SFBJ, brown glass eyes, CM, straight leg compo body, native dress
- 616 21” BISQUE HANDWERCK 109-11**, blue glass sleep eyes, OM with teeth, PE, mohair wig, BJCB (missing 1 finger right hand)

- 617 LOT OF 2 – 24” BISQUE WALTERSHAUSEN 1916**, brown glass sleep eyes, OM with teeth, auburn wig, BJCB (missing finger left hand), & 26” AM 390, blue glass eyes, OM with teeth, blonde mohair wig, BJCB
- 618 LOT OF 2 – 14” BISQUE HERMAN STEINER 7**, blue glass eyes, OM with teeth, red HH wig, compo body, (fingers damaged), & 19” Bisque Kestner 154 DEP, blue glass sleep eyes, OM with teeth, mohair wig, bisque arms, cloth body, early dress
- 619 LOT OF 2 – 22” BISQUE SHOULDER HEAD GERMAN** (no mark), blue glass eyes, OM with teeth, mohair wig, kid/cloth body, white dress, (shoulder repair) & 23” Bisque Karl Hartman, brown glass sleep eyes, OM teeth, BJCB, pink dress (melting)
- 620 LOT OF 2 – 22” BISQUE HEINRICK HANDWERCK** Simon Halbig, brown glass sleep eyes, OM with teeth, PE, mohair wig, BJCB, & 22” Bisque Germany B4, blue glass sleep eyes, OM with teeth, mohair wig, BJCB, pink dress
- 621 LOT OF 2 – 22” BISQUE 79**, blue glass sleep eyes, OM with teeth, PE, mohair wig, BJCB, blue dress, & 21” Bisque shoulder head K&K 39, brown glass sleep eyes, OM with teeth, bisque arms, kid body, white dress
- 622 LOT OF 3 – 17” SCHOENHUT BOY**, painted features, jointed wood body (as is condition), 11 ½” Bisque LW C 152, blue glass sleep eyes, OM with teeth/tongue, mohair wig, compo body, & 15” Bisque shoulder head Ruth, brown glass sleep eyes, OM with teeth, mohair wig, cloth body (finger damage)
- 623 30” BISQUE CM BERGMAN SIMON HALBIG 13 ½**, blue glass sleep eyes, OM with teeth, PE, synthetic wig, BJCB, blue dress
- 624 28” BISQUE SIMON & HALBIG K*R 68**, brown glass sleep eyes, OM with teeth, PE, mohair wig, BJCB, white dress
- 625 30” BISQUE GERMANY HEINRICK HANDWRECK 6 ½**, blue glass sleep eyes, OM with teeth, PE, mohair wig, BJCB, white dress
- 626 36” BISQUE K*R SIMON HALBIG 90**, blue glass sleep eyes, OM with teeth, PE, mohair wig, BJCB, white dress
- 627 30” BISQUE DEP, BROWN GLASS SLEEP** eyes, OM with teeth, PE, mohair wig, BJCB, early crotch outfit
- 628 30” BISQUE 1248 SANTA**, brown glass sleep eyes, OM with teeth, PE, mohair wig, BJCB, white dress, (hairline on forehead)
- 629 22” BLONDE HAIR PARIAN**, blue glass eyes, CM, PE, sculpted hair, married to cloth body with leather arms, blue dress
- 630 20” BISQUE S&H 1009 DEP**, blue glass eyes, OM with teeth, PE, mohair wig, BJCB, red gingham dress
- 631 LOT OF 2 LENCI TYPE DOLLS**, 17” Boy, felt face, painted features, blonde hair, & 15” Girl, felt face, painted features, blonde hair
- 632 14” DOME TOP TRUNK** with assorted doll clothes
- 633 BOX LOT OF ASSORTED** doll clothes
- 634 LOT OF 5 7 1/2” MADAME** Alexanders
- 635 LOT OF 8 SHOULDER HEAD DOLL HEADS** in various sizes & styles
- 636 16 ½” STRAP TRUNK** with assorted doll clothes

- 637 2 - 1998 UFDC CONVENTION DOLL** "Lisette" sets
- 638 16" JDK 211 CHARACTER BABY**, blue glass eyes, OM, mohair wig, baby compo body, yellow knit outfit
- 639 4 ½" BISQUE GOOGLY 292.10**, blue glass Googly eyes, watermelon mouth, all bisque, (Is it real or is it Memorex)
- 640 28" BISQUE HEINWRICK HANDWERCK HALBIG**, brown glass eyes, OM with teeth, mohair wig, BJCB, white dress
- 641 27" BISQUE 121 K*R SIMON HALBIG**, brown glass sleep eyes, OM with teeth, mohair wig, BJCB, gold dress
- 642 2 – 16" BISQUE S&H 1249**, blue glass eyes, OM with teeth, mohair wig, BJCB no clothes, 18" Bisque S&H 1039, blue glass sleep eyes, OM with teeth, mohair wig, BJCB, red knit outfit
- 643 15" SCHOENHUT GIRL, PAINTED FEATURES**, mohair wig, jointed wood body, white dress, small Teddy Bear (paint touchups)
- 644 22" BISQUE K*R SIMON HALBIG 122 BABY**, brown glass eyes, OM, mohair wig, baby compo body (repaint), white gown
- 645 23" BISQUE 1248 SIMON HALBIG**, blue glass sleep eyes, OM with teeth, mohair wig, pink/tan dress
- 646 2- BISQUE CHARACTER BABY DOLLS**, 15" JDK, blue glass sleep eyes, OM, compo baby body, painted blonde hair, & 13" 151, blue glass sleep eyes, OM, compo baby body, painted blonde hair
- 647 19" BISQUE 192, BLUE GLASS SLEEP EYES**, OM with teeth, mohair wig, BJCB, white & purple outfit
- 648 LOT OF 2 - 19" BISQUE SHOULDER HEAD SIMON & HALBIG 1080**, brown glass sleep eyes, OM with teeth, mohair wig, kid body with bisque arms, & 15" Bisque K*R 39, brown glass sleep eyes, OM with teeth, mohair wig, BJCB, blue outfit
- 649 LOT OF 2 CHARACTER BABIES**, 13" JDK, blue glass sleep eyes, OM, blonde painted hair, baby compo body (left leg repair), & 12" K*R 126, brown glass sleep eyes, mohair wig, baby compo body
- 650 LOT OF 2 BABY DOLLS**, 10" Bisque Heubach, painted features, baby compo body, sculpted hair, & 16" Bisque Georgina Averil, brown glass sleep eyes, OM, cloth body
- 651 18" BISQUE HANDWERCK 109**, brown glass sleep eyes, OM with teeth, PE, BJCB, white dress
- 652 LOT OF 2 – 16" BISQUE S/H HEAD BOY**, ptd. features, cloth body, & 15" Bisque dome S&H 941, blue glass eyes, CM, mohair wig, cloth body, bisque arms, (as is)
- 653 12" BISQUE KESTNER 167**, blue glass sleep eyes, OM with teeth, synthetic wig, BJCB, pink outfit
- 654 12" BISQUE KESTNER 171**, blue glass sleep eyes, OM with teeth, mohair wig, BJCB, blue dress
- 655 LOT OF 2 – 10" BISQUE BABY 166** Germany, painted features, CM, baby compo body red suit, & 15" shoulder head parian boy, painted features, cloth body with kid arms, check outfit
- 656 LOT OF 2 – 14" BISQUE CHARACTER BABY K*R 100**, painted features, compo body, white dress, & 11" All bisque 211, blue glass sleep eyes, OM, mohair wig

- 657 LOT OF 2 – 10” BISQUE 1078**, brown glass sleep eyes, OM with teeth, mohair wig, BJCB, & 13” Bisque Artist head on kid/bisque crier body, early outfit
- 658 LOT OF 2 – 11” BISQUE 1249**, blue glass sleep eyes, OM with teeth, straight leg compo body, blue dress, & 14” Bisque SH 1079, blue glass sleep eyes, OM with teeth, PE, mohair wig, BJCB, no clothes
- 659 LOT OF 2 - HEUBACH S/H DOLLS W/ MOLDED HAIR**, 14 ½” painted features, kid/compo body, green dress, & 12” painted features, kid body with bisque arms, pink gingham dress
- 660 LOT OF 2 HEUBACH’S, - 8” 8733**, painted features, side glancing, compo body, & 8” painted features, side glancing, compo body
- 661 11” BISQUE 2 FACED SAD, HAPPY**, blue glass eyes, CM. straight wrist compo body, (repairs to body)
- 662 LOT OF 2 – 10” BISQUE KESTNER O**, brown glass sleep eyes, OM with teeth, mohair wig, straight wrist compo body, pink dress, & 8 ½” Bisque 119, OM with teeth, blonde mohair wig with braids, straight wrist compo body with painted shoes & socks
- 663 LOT OF 2 – 5 ½” ALL BISQUE GOOGLY**, painted features, mohair wig, painted shoes & socks, & 8 ½” Bisque AM 210, painted features, bob hair, compo body
- 664 LOT OF 2 – 8 ½” BISQUE AM 500 BOY**, painted features, CM, compo body, painted shoes & socks, dressed in lederhosen, & 8 ½” Bisque AM 590 boy, CM, painted features, compo body sailor outfit
- 665 LOT OF 2 – 11” HEUBACH 7620 BOY**, pted. features, OM w/ teeth, molded hair, BJCB, red vest, & 11” bisq. S/H flocked hair, CM, straight wrist compo body, sailor outfit
- 666 18” BISQUE K*R 122**, brown glass sleep eyes, OM with teeth, mohair wig, BJCB (major repairs to body)
- 667 LOT OF 2 PARIAN SHOULDER HEAD DOLLS**, 17” Blonde sculpted hair, painted features, cloth body, white dress, & 23” brown sculpted hair, painted features, cloth body with leather hands, blue dress
- 668 21” BISQUE 1009 S&H**, blue glass sleep eyes, OM with teeth, PE, mohair wig, white dress, BJCB (replaced arms)
- 669 SUITCASE FULL OF ASSORTED** modern clothes
- 670 LOT OF ASSORTED CLOTHES**, accessories, hats, etc.
- 671 LOT OF ASSORTED FABRIC**, lace, etc.
- 672 2 – MOHAIR STEIFF TEDDY BEARS**, 12” gold & 15 ½” gold with bugle
- 673 20” BISQUE K*R, BROWN GLASS EYES**, OM with teeth, PE, mohair wig, BJCB, blue/brown plaid dress
- 674 18” BISQUE KESTNER 164**, blue glass sleep eyes, OM with teeth, mohair wig, BJCB, blue gingham dress
- 675 10” BISQUE JDK 260 TODDLER**, blue glass sleep eyes, OM with teeth, mohair wig, toddler compo body, blue stripe outfit, (hairline back of head)
- 676 LOT OF 2 – 16 ½” S&H 1279**, brown glass sleep eyes, OM with teeth, PE, BJCB, white sailor outfit, & 19” B P 320, brown glass sleep eyes, OM with teeth, PE, mohair wig, BJCB, white dress

- 677 LOT OF 2 – 14” GERMAN BISQUE HEAD BOY**, painted features, CM, blonde sculpted hair, BJCB, white outfit, & 13” Heubach 7844 boy, painted features, open mouth, blonde sculpted hair, kid body with bisque arms, green outfit
- 678 10” BISQUE ORIENTAL, BROWN GLASS EYES**, OM with teeth, mohair wig, original clothing, BJCB, hairline back of head
- 679 14” BLACK BISQUE K*R 100 BABY**, painted features, OM, brown painted hair, baby compo body
- 680 LOT OF 2 BLACK HAIR CHINA DOLLS**, 23” painted features, CM, sculpted black hair, cloth body with china arms, white dress, & 20” painted features, sculpted black hair, cloth body with china arms & legs red check dress
- 681 LOT OF 5 STUFFED ANIMALS**, 2 – Steiff, 2 – painted cloth , 1 – Teddy Bear
- 682 BOX LOT OF ASSORTED EARLY CHRISTMAS** toys, ornaments, etc.
- 683 LARGE BOX LOT OF ASSORTED DOLL** clothes from vintage to modern
- 684 20” BLACK HAIR CHINA**, painted features, CM, cloth body with leather hands (as is), early green dress & shoes
- 685 24” BISQUE KESTNER 146**, brown glass eyes, OM with teeth, mohair wig, BJCB, blue/white outfit
- 686 LOT OF 2 BLACK HAIR CHINAS**, 19” painted features, CM, replaced body, white skirt, & 16” painted features, cloth body with leather arms, white/pink polka dot dress
- 687 LOT OF 2 BISQUE CHARACTER BABY DOLLS**, 10” FB, painted features, OM, painted blonde hair, baby compo body, & 15” 132, blue glass sleep eyes, OM with teeth, baby compo body, mohair wig
- 688 LOT OF 2 BISQUE HEAD DOLLS, 21” 97 DEP HANDWERCK**, blue glass sleep eyes, OM with teeth, mohair wig, BJCB stamped Handwerck body, & 20” Kestner, brown glass sleep eyes, OM with teeth, mohair wig, BJCB, white dress
- 689 LOT OF 2 BISQUE HEAD DOLLS**, 18 ½” 289 DEP, brown glass sleep eyes, OM with teeth, PE, BJCB (repairs), white dress, & 22” German brown glass sleep eyes, OM with teeth, (no wig), BJCB, tan dress
- 690 25” BISQUE S&H 1009 DEP**, blue glass sleep eyes, OM with teeth, PE, mohair wig, BJCB, white dress

691 25" BISQUE S&H 1079 DEP, blue glass sleep eyes, OM with teeth, PE, mohair wig, BJCB, pink dress

692 33" BLACK HAIR PINK TINT CHINA, painted features, CM, new cloth body & arms (detached arms)

693 12" CHASE BOY, PAINTED FEATURES, blonde stroke hair, painted stockinet body, white outfit, (areas of repaint)

694 LOT OF 2 BISQUE DOLLS, 16 ½" 1250, brown glass sleep eyes, OM with teeth, PE, mohair wig, kid body with bisque arms, orange dress, & 14" S&H 1160 Lady doll, brown glass eyes, CM, PE, mohair wig, kid body with bisque arms, green dress

695 17" Creche type, carved & PAINTED WOOD, CLOTH BODY, ORIGINAL OUTFIT, BLONDE hair, blue ribbon (hand repair work)

696 25: BISQUE K*R 405, blue glass sleep eyes, OM with teeth, PE, mohair wig, BJCB, white dress

697 18" MODERN KATHE KRUSE, painted features, mohair wig, cloth body with extra outfits

698 15" BISQUE S&H WSK, brown glass sleep eyes, OM with teeth, PE, red mohair wig, BJCB, green polka dot dress

699 23" BLACK HAIR CHINA, painted features, CM, cloth body with leather arms (replaced), red check dress, early shoes

700 24" BISQUE SIMON HALBIG K*R 62, blue glass sleep eyes, OM with teeth, PE, red mohair wig, BJCB, white dress

***** The End of the Auction & the End of the 2019 Auction Season*****

All of us at Withingtons would like to express our sincere appreciation for all of your support & dedication, throughout the years... we are here because of you... and will continue to present auctions of quality doll collections into the future.

We love you all!!

Have a Happy and Healthy Holiday Season

See you next year

Sincerely, Marcia & Larry Leisure,

*Withington Auction, Inc. - November 7 & 8, 2019
There will be no Inspections of dolls / Lots after the auction begins.*

*** NOTES ***



