

# WITHINGTON AUCTION, INC

## *Dolls at Auction*



June 16, 2022



# WITHINGTON AUCTION, Inc.

Dolls at Auction ~ June 16, 2022

*Playing with Dolls Since 1959*

**AUCTION  
SALE # 2585\_**

**PREVIEWS**

**DOLL SHOW  
& SALE**

**HOTEL INFO**

**WEB-Site**

**ABSENTEE  
Bidding**

**TERMS**

**STAFF**

**CONSIGNING  
Your Collection**

**CONTACT  
603-478-3232  
FAX: 478-3233**

**Thurs. June 16, 2022 - A very FULL Day 500 lots of Dolls & Dollhouses!  
AUCTION STARTS - 10:00 AM**

Double Tree by Hilton - 3 Somerset Parkway, Nashua, NH

**June 15 - Evening: 7 - 9pm  
June 16 - Morning: 8 - 10am**

**June 15** 1 - 6 pm *or by Chance....* OPEN TO THE PUBLIC!  
7th Floor Hotel Rooms - Doll Show & Sale Room Selling - *Space is limited*  
Call for Reservations - Doubletree 603-886-1200  
*BUY \* SELL \* TRADE - Social Networking - Dolls Meet 'N Greet*

**New Location! Double Tree by Hilton**, 2 Somerset Parkway, Nashua, NH  
Exit 8 off Rt. 3 (*ASK FOR THE DOLL RATE*) 603.595.4102  
(*Note: Holiday Inn is Gone! RIP old gal.... Thanks for the memories*)

**Full Color Catalogue - \$15.**  
(View Cat on-line & 1,500++ PHOTOS) - [www.withingtonauction.com](http://www.withingtonauction.com)

**ABSENTEE & TELEPHONE BIDDING ACCEPTED - NO INTERNET !  
BIDDING FORMS AVAILABLE ON OUR WEB-SITE**  
[www.withingtonauction.com](http://www.withingtonauction.com)  
**You must Pre-register by Tuesday June 14, in order to telephone Bid**

**RETURNS:** All items **MUST** be inspected and returned within **10 minutes** of purchase - **if not as described in catalogue**, and be of \$ 100.00 valuation or more to qualify for a refund - Due to the sufficient time allowed for inspecting the dolls, The following items are sold **AS-IS**: All bodies are sold AS-IS; . All Paper Dolls, Artist Dolls, Madame Alexander Dolls and Box lots. Speckling and wear are normal conditions for Bisque and China dolls, therefore it will be up to the buyer to inspect for these conditions. Items designated AS-IS are FINAL SALES.

**17% Buyer's Premium - Discounted to 14% for Cash or Check  
Visa & Mastercard accepted - No NH Sales Tax**

**Larry Leizure** President, Photographer, Appraiser, Consultant - NHPA Member  
**Marcia Leizure** NH Auctioneer's Lic. #4028, Events, Trucker, Writer....  
**Barbara Scully** Auctioneer II, Councilor: DAA (Doll Addicts Anonymous)  
**Mary Dominick** - Photography, Clerking,  
**Dick Withington (RIP) 3/31/1918 - April 29, 2008 - NH Auctioneer's License #1**  
**Dolores Smith (RIP)** Doll Specialist, Master Chef, we lost our angel...  
**Bob Bouchard (RIP)** Grounds, Dolls, & about everything else! Miss you everyday.

*Thinking about Selling your Doll Collection? Withington's can help..  
Call or E-Mail photos and / or inventory for a free verbal appraisal.*

**WITHINGTON AUCTION, INC.**

*Selling Dolls at Auction since 1959*  
17 Atwood Road Hillsborough, NH 03244

E-mail: [withington@conknet.com](mailto:withington@conknet.com) - WEB: [www.withingtonauction.com](http://www.withingtonauction.com)  
For Info: 603-478-3232 / FAX 603-478-3233

# \*\*\*GREETINGS\*\*\*\*\* June 2021

## FROM THE DOLLHOUSE... WITHINGTON AUCTION, Inc. - Hillsborough, NH

Back in late 1990's, Dan Hingston, Auction Manager of Withington Auction for the past 36 years, decided to retire from the business .... and he encouraged Dick to do the same - *"Quit while you're ahead."* eighty-yr-old Dick, had no intention of quitting the business ever...but now was faced with the fact that most of his auction crew had decided to join Dan in retirement. For Richard W. Withington, quitting the auction business was like giving up breathing air... it was his life and what would he do without it? When Dick was in his final stages of brain cancer, his frequent dizziness made him lose his balance and occasionally fall ...bouncing back up. He often joked, "I may fall down a lot... but I always get up!" With the grim prospect of closing the business he had grown for 50 years... *could he Rise Up from this disappointment?*

Over the years my husband, Larry and Dick had become good friends and mischief-makers, spending the summer weekends boogie-cruising or going to country auctions. (Yes, there was beer involved). With the closure of the business looming, Dick asked Larry to run the company, temporarily, until he found a permanent auction manager. A similar scenario was the story of how Dolores Smith, a 40 year doll dealer and dedicated Withington Auction customer, became Withington's doll specialist, "temporarily for 20 years" (Barbara Berger abandoned Dick as well.) For Dolores, this was her dream job, and likewise, she was the perfect doll specialist for nearly 20 years. There were many new additions to our auction family, most notably was Bobby Bouchard, who did everything from maintaining buildings and grounds, to assisting Dolores in doing the doll catalog. Bob never had a job description ... he just did everything that needed to be done!

The "second generation" has thrived for years, despite the many obstacles presented by the changing climate of the collecting world. Through innovation and exploring new ideas and technologies, the current WAI has been one of constant change and experimenting throughout our tenure. We are still a small family run firm, that has continued to compete with the larger corporate doll auction houses. We have, through tenacity and hard work, continued to maintain a flawless reputation that continues to operate by the RWW standards - Honesty - Integrity - Knowledge, for 70+ years. Together, Larry and I have nurtured the stalwart, old company through some very tough times. The business has had to evolve along with the changing tastes, aging collectors, and a predominance of our Minimalist Millennials who collect Nothing... (save maybe an I-Phone 18 or a 72" TV!)

Today, as the legendary collectors downsize, sending their dolls to the auction block, it's only natural to try to fit the contents of a 12- room house into a 4-room condo! The dolls come to us often times in installments: First comes the quantity of lesser dolls they are willing to part with; and the best, most treasured, cream of the collection are saved for Last time. The truckload is reduced to a dozen file boxes of dolls under 12 inches - Dolores used to say, "The older the collection, the smaller the dolls." Those #0 #1's & 2's certainly get a seasoned doll collector's heart thumping. The featured dolls in the June auction is the collection of Cheryl Barkhouse. Barbara Scully, Co-Auctioneer and long-time doll friend, became acquainted with Cheryl at the Dedham, Mass Doll shows. Of the long-running doll events, the Dedham shows are still well attended by, not only the Region 15 Doll club members, but also dealers and collectors from afar. Barb and Cheryl became fast friends with a lot in common, antique dolls, members of the Doll Study Club of Boston, and they both, coincidentally, worked in the field of Medical Billing in Boston. Cheryl had worked at Boston Children's Hospital for years, but Barb convinced her to join Mass Eye and Ear, where she was head of the department. Barbara was the catalyst among many local collectors and brought other "Newbies" into the fold by holding "Dolly Days" at her home, giving a time and place to get together and enjoy all things Dolls! Cheryl was one of our the doll family, active and hardworking serving as Treasurer and President for several years of the DSCB. After a long battle with cancer, Cheryl had made plans to have Barbara take care of her already-refined collection - the remaining 100 small, cabinet-sized examples of many fine dolls. Barbara had developed so many lasting relationships with doll friends far and wide and she will surely use that passion to develop the Third Generation of Withingtons, hopefully, in the near future. There will be a gathering in the Somerset Ballroom from 7:00 - 9:00pm, to celebrate Cheryl Barkhouse and her life with the dolls on Wednesday night from 7:00 - 9:00, to celebrate *"Cheryl Barkhouse & her life with the dolls."* Everyone is welcome to view her collection as well as the rest of the June 16th auction.



Cheryl Barkhouse

We started to put together the June auction before the Christmas holidays, traveling to Northern NY to the shores of Lake Ontario. The dolls, textiles and childhood treasures were the remaining collections of an "over-achiever", with sewing antiques, all-bisque and dollhouse miniatures... what remained after filling 6 dumpsters with *"other collections!"* You can't help but wonder what was cast off in the process..... Oh well, can't worry about that now. There are still so many interesting things to see...

Our travels South, brought us together with a favorite collector, who has remained connected with Withington Dolls long-range: through the phone or internet... caring for her hubby keeps her close to home. A small but note-worthy assembly of dolls for auction, include a mint Maggie Bessie, with Shirley Temple provenance, a few Jumeau, and only the second Martha Welling ton we have had in 20 years! She is truly a seasoned collector with an exceptional eye - only the best will do!

Traveling North, we found a lovely home in the stately neighborhood of Forrest Hills, NY, a classic Tudor-style home from the early 20th C. The 2-family house, was full of the tools of the trade... a skilled dress designer of couture clothes for high end children's boutiques. The doll collecting fit together with her skills as a seamstress, dressing dolls when time allowed. A treasure trove on 4 floors!

In the late winter we found multi-tasking was the best way to handle several small collections in close proximity. In Westport, CT, the house was nearly empty, the legion of realtors waited impatiently in their cars, to be the first to view the Mid-Century modern ranch, a new listing in this volatile market. I must confess, I was relieved that the 5,000sq.ft. house contained only the remains of the collections of Dolls & dollhouses, and that we didn't have the entire house to empty. The quality of the miniature were first rate and we worked quickly to be on our way.

The following day our destination was Beacon, NY, a familiar area close to the homes of Kathy Zimmerman and Mimi Mc-Tammany.... Wonderful doll collections of favorite doll friends from years gone by. The home, a Victorian, multi-level network of halls and passage ways, winding cellar stairs and floor -to-ceiling shelves, organized by color or theme, surrounding German Stores and Kitchens, loaded with a thousand tiny treasures, used to make comfortable, the tiny doll house families that live in them. Additionally, there were "bigger dolls"... under 12": Jumeau, Kissing Bru and others, besides the Doll house families - ya never know what you're going to find.

Close to home, in Rye, NH, near the Wentworth by the Sea, (home of the annual DCA meeting). A delightful elderly couple proudly showed us their lifetime collections of White Mt. paintings, textiles, folk art, toys bears.... *and Dolls*. Personally, the house was the most remarkable antique...*the Old Parsonage*, saved from the wrecking ball. Over the decades, restored and rebuilt from the foundation to the roof, and from the wainscoting to the 12 over 12 window sash. Recreated by skilled hands and a scholarly understanding of colonial architecture, this was a labor of love. We came away with some early dolls - cloth, peg woodens and a Queen Anne among them. It appears they are still trying to fit the twelve rooms of furniture into the 2 bedroom condo... on the other side of town!

In closing I would like to pay homage to our dear friend, a most wonderful human being and invaluable member of the Withington Auction Family, Bobby Bouchard. At 88 years old, he has been our right hand man, tireless worker and dedicated friend to us all. Most of you will remember Bobby running around the ballroom at the auctions, doing set-ups, showing dolls at the previews, and running lots during the sale. How many piles of boxes & dolls did Bobby help load into too-small vehicles, magically making them fit!? Born in Hillsboro, instilled with an old-school work ethic, humble, tireless and practically smart with an old-fashioned Yankee Wisdom. Sadly, Bobby passes away in January .... he had a bit of a back ache and shortness of breath. After a couple nights in the hospital for tests, he returned home to football with his son Billy, lasagne and a good nights sleep. He came down in the morning, put on the coffee and passed out in the bathroom. They were unable to revive him and he was gone. That was Bobby, find the quickest and best way to complete a job... We miss him everyday and appreciate him more than he'll ever know.

*Sincerely, Marcia & Larry Leizure*

June 16, 2021

WITHINGTON AUCTION, Inc.

17 Atwood Road - Hillsborough, NH 03244

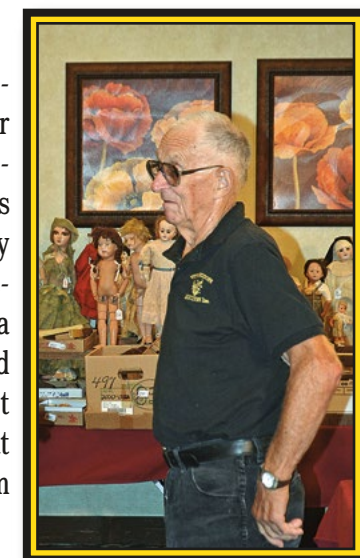
Marcia Leizure - NH Lic. # 4028

[withington@conknet.com](mailto:withington@conknet.com)

\* 603-478-3232 \*

Larry Leizure, President

[www.withingtonauction.com](http://www.withingtonauction.com)



Robert (Bobby) Bouchard  
1934 - 2022  
We'll miss you Bobby

## June 16, 2022 - Picture Dolls

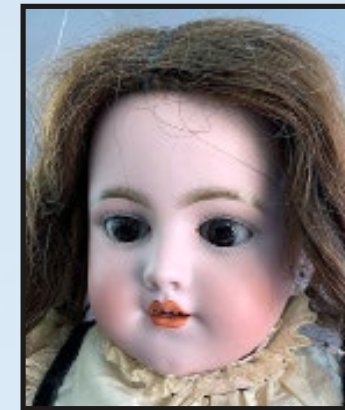
- 01 23" BISQUE SCROLL F G 9**, blue glass eyes, O/CM, PE, brown mohair wig (no pate), paper label Steiner compo body, white dress with green ribbon
- 02 23" BISQUE S&H HALBIG 9 ½**, blue glass sleep eyes, OM with teeth, PE, Blonde HH wig, BJCB, blue velvet dress
- 03 22 ½" BISQUE SHOULDER HEAD S&H 1260 DEP** Germany 7 Imperial, brown glass sleep eyes, OM with teeth, PE (right ear nick), pink cloth body with bisque arms, pink/black dress (melting)
- 04 12 ½" BISQUE S&H 949** shoulder head, blue glass eyes, CM, PE, blonde mohair braided wig, cloth body with bisque arms, black/red outfit (melting, clothes sewn own)
- 05 K\*R 114 4 BISQUE HEAD ONLY**, painted blue eyes, CM, (excessive wig glue)
- 06 9" KESTNER 143**, blue glass sleep eyes, OM with teeth, blonde mohair wig, straight wrist compo body, white dress
- 07 7" JUST ME REGISTERED GERMANY A310/11M**, blue glass sleep eyes, CM, red mohair wig, compo body (left foot repair, right thumb repair), white lace dress
- 08 2 – 4 ½" ALL BISQUE MIGNONETTE'S**, 1- brown glass eyes, OM with teeth, blonde mohair wig, painted socks & shoes (socket roughness) beige dress, 1 – blue glass eyes, CM, blonde mohair wig, painted shoes & socks, red outfit
- 09 2 – ALL BISQUE DOLLS UNDRESSED**, 6 ½" Kestner 150, blue glass eyes, CM, blonde mohair wig, painted shoes & socks, (hip joints roughness), & 6" 61-7, blue glass eyes, CM, blonde mohair wig, painted shoes & socks, peg joints, (left eye corner residue)
- 10 2 – ALL BISQUE MIGNONETTE'S**, 5 ½" blue glass sleep eyes, CM, swivel neck, blonde mohair wig, painted shoes & boots, vintage outfit, & 6" blue glass eyes, CM, blonde mohair wig, swivel neck. Peg joints, painted socks & 2 strap black shoes
- 11 4 ½" ALL BISQUE 189 SWIVEL NECK**, brown glass eyes, side glancing Googly, CM, painted shoes & socks, (no clothes or wig) (slight upper left leg roughness)
- 12 3 – SMALL ALL BISQUE PAINTED FEATURE GOOGLIES**, side glancing eyes, 2 – 5" 1 with painted shoes & socks, 1 – 4 ½"
- 13 2 – ALL BISQUE DOLLS UNDRESSED**, 7" KESTNER 150, brown glass sleep eyes, OM with teeth, painted socks & shoes, & 6" blue glass eyes, peg joints, painted socks & shoes
- 14 2 – 6 ½" ALL BISQUE WRESTLER TYPE**, 1 – swivel neck, brown glass sleep eyes, OM with teeth, peg joints, painted socks & tassel boots, 1 – blue glass sleep eyes, blonde mohair wig, peg joints, painted socks & 3 strap boots
- 15 11" BISQUE BELTON TYPE, BROWN GLASS EYES**, CM, blonde mohair wig, PE, straight wrist compo body, (right hand repair)
- 16 2 – ALL BISQUE KESTNER 150'S**, 1 – 11" BROWN GLASS SLEEP EYES, OM with teeth, brown mohair wig, painted socks & shoes (some tiny bisque rubs), & 10" brown glass sleep eyes, OM with teeth, blonde mohair wig, painted socks & shoes



001



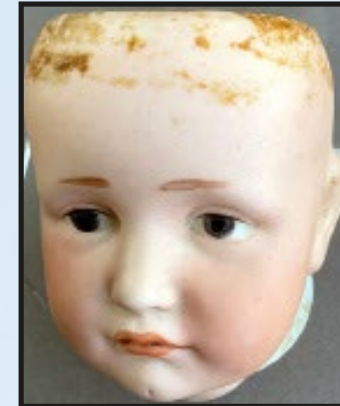
002



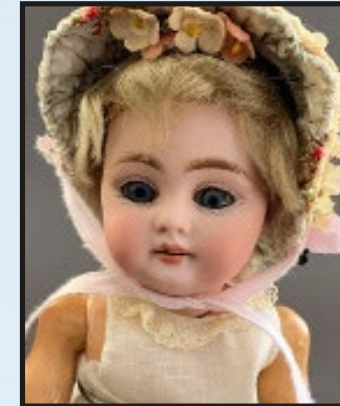
003



004



005



006



007



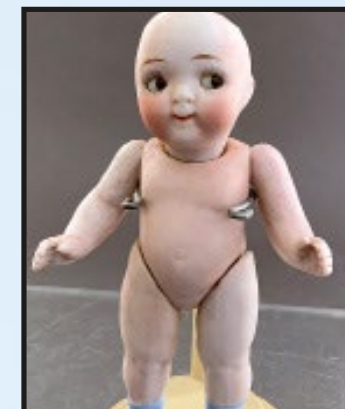
008



009



010



011



012



013



014



015



016

There will be no inspections of Dolls/Lots after the auction begins

Withington Auction, Inc.

5

Dolls at Auction - June 16, 2022



017



018



019



020



021



022



023



024



025



026



027



028



029



030



031



032

**17 18" BISQUE SHOULDER HEAD 8**, bald head, brown glass eyes, CM, blonde mohair wig, kid body with bisque arms, white dress

**18 2 - ALL BISQUE WRESTLER TYPES**, 9" blue glass sleep eyes, OM with teeth, blonde mohair wig, peg joints, swivel neck, painted socks & shoes, - 8" brown glass eyes, CM, painted socks & shoes, no clothes

**19 18" BISQUE DOME/BALD SHOULDER HEAD**, blue glass eyes, CM, brown mohair wig, kid body with bisque arms, white dress, (small check rubs)

**20 13" BISQUE SOCKET HEAD/SHOULDER PLATE FASHION**, blue glass eyes, CM, PE, blonde mohair wig, kid body with bisque arms, antique red outfit with lace trim (1" hairline right forehead)

**21 2 - ALL BISQUE DOLLS**, 1 - 7 1/2" Wrestler type, blue glass eyes, CM, blonde mohair wig, painted shoes & boots, peg joints, & 1 - 5" 620 3 1/2, brown glass sleep eyes, OM with teeth, blonde mohair wig, painted quilted socks & shoes, no clothes

**22 14" BELTON TYPE 6, BLUE GLASS EYES**, O/CM, PE, brown mohair wig, straight wrist compo body, peach dress, (tiny pock mark right chin, tiny fleck by left PE)

**23 2 - 4" ALL BISQUE DOLLS**, 1 - brown glass sleep eyes, CM, blonde mohair wig, painted socks & shoes, red dress (Theraults tag), 1 - 307, brown glass eyes, CM, black painted socks yellow shoes, knit/crewel dress

**24 11 1/2" BISQUE K\*R 101**, ptd. features, c/m, BJCB, blonde mohair wig, no clothes

**25 16" PORTRAIT JUMEAU 7**, blue glass eyes, CM, PE, strawberry blond mohair wig, Straight wrist blue stamp Jumeau body (touchups & wear), burgundy dress

**26 14 1/2" HEUBACH 6970 4 CHARACTER CHILD**, painted intaglio eyes, CM, brown mohair wig, BJCB (wear, needs leg stringing), floral dress

**27 16" FRENCH FASHION FG 2**, swivel neck, blue glass eyes, CM, PE, kid body, black dress, (2 long cracks in forehead professional repaired)

**28 15 1/2" BISQUE KESTNER 5 SHOULDER HEAD**, blue glass eyes, CM, blond HH wig, kid body with bisque arms, white/pink outfit

**29 21 1/2" KESTNER 11 SHOULDER HEAD**, brown glass eyes, CM, Blonde HH wig, cloth body with bisque arms, no dress

**30 LOT OF 2 HALF DOLL PIN CUSHIONS**, 1 - 6"T English hallmark sterling silver figural lady with needlework dress, & 1 - 7 1/2"T china with painted features, holding flowers, elaborate hat, needlework & floral dress

**31 LOT OF 4 MIGNONETTES**, 1 - 4" blue glass sleep eyes, CM, brown mohair wig, painted socks & shoes, pink dress, 1 - 5" brown glass eyes, CM, blonde mohair wig, painted socks & shoes, red stripe dress, 1 - 4" blue glass eyes, CM, brown mohair wig, painted socks & shoes, red outfit, 3 1/2" blue glass eyes, CM, blonde mohair wig, painted socks & shoes blue outfit

**32 LOT OF 4 MIGNONETTES**, 1 - 4" brown glass eyes, CM, blonde mohair wig, painted socks & shoes, yellow/black outfit, 1 - 5" brown glass sleep eyes, CM, blonde mohair wig, blue dress, 1 - 4 1/2" blue glass eyes, CM, blonde mohair wig, painted socks & shoes, red stripe dress, 4" 191, brown glass eyes, CM, blonde mohair wig, painted socks & shoes green felt outfit

There will be no Inspections of dolls / lots after the auction begins

*Withington Auction, Inc. - June 16, 2022*

There will be no inspections of Dolls/Lots after the auction begins

*Withington Auction, Inc.*

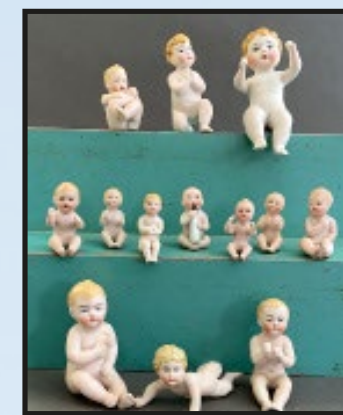
6

*Dolls at Auction - June 16, 2022*

- 33 LOT OF 13 SMALL ALL BISQUE DOLLS 1 ½” – 4”**, painted features, various poses, 1 has tiny hand flake
- 34 15” BISQUE F G 3 FRENCH FASHION WALKING/WALTZING LADY DOLL**, blue glass eyes, CM, PE, brown mohair wig, kid body with bisque arms, key wind walking mechanism on wheels, when doll walks arms raise & lower (over wound), white walking outfit, (hairline from rim over right ear)
- 35 15” BISQUE KESTNER 7, SHOULDER HEAD**, brown glass eyes, CM, brown mohair wig, kid body with bisque arms, white dress
- 36 7”T X 6” DIAMETER, PAINT DECORATED AND GLAZED** porcelain figural group of 5 girls dancing around a raised well type container, blue anchor stamp on base
- 37 18 ½” BISQUE BALD SHOULDER HEAD**, blue glass eyes, CM, PE ( right ear chip & nick), kid body with bisque arms, red mohair wig, black outfit
- 38 6 – SMALL ALL BISQUE DOLLS 3 ½” – 5”**, painted features, 5 with mohair wigs, painted socks & shoes, 3 – undressed
- 39 4 – SMALL ALL BISQUE DOLLS 150, 720, 3 ½” – 5”**. painted features, mohair wigs, painted socks & shoes, 2 undressed, (2 need stringing)
- 40 17 ½” BISQUE STEINER FRE A 11**, Blue glass eyes (left eye set off from factory), CM, PE, blonde mohair wig, straight wrist marked Steiner compo body (body may have been re-glazed), white dress
- 41 LOT OF 6 DOLL HOUSE DOLLS 4” – 7”T**, bisque heads, painted features, various antique outfits (some melting, holes), doll in red is a S&H 1160 “Little Women” series
- 42 LOT OF 14 DOLL HOUSE DOLLS 3” – 7”T**, 5 – china heads, 9 – porcelain heads, painted features, 9 – dressed, 5 – no clothes
- 43 17 – SM. CHILDREN BISQUE/PORCELAIN FIGURINES 2” – 4”**, painted features, various poses
- 44 LOT OF 9 SMALL ALL BISQUE DOLLS, 1 ¾” – 3”** painted features, 4 – no clothes, 2 – maids, most have pegged joints, 1 in red damaged
- 45 LOT OF 15 BISQUE & PORCELAIN HALF DOLLS 1 ¾” – 4”**, painted features, 1-5845 Germany (Galuba Hofmann?), & 1 – Victorian “Naughty”
- 46 LOT OF 8 ALL BISQUE SMALL DOLLS 3 ½” – 5 ½”**, painted features, molded outfits, jointed arms
- 47 LOT OF 10 SMALL ALL BISQUE BABIES 2” – 5”**, painted features, only 1 with clothes, some need re-stringing
- 48 2 – BISQUE SHOULDER HEAD DOLLS, 1 – 13 ½” 376 dep 2/0**, painted features molded blonde hair, cloth body, 4 strap black painted shoes, (in making bisque mark by left neck) orange dress, & 1 – 13 ½” molded hair & bonnet, painted features, cloth body with china limbs, white dress

There will be no Inspections of dolls / lots after the auction begins

*Withington Auction, Inc. - June 16, 2022*



033



034



035



036



037



038



039



040



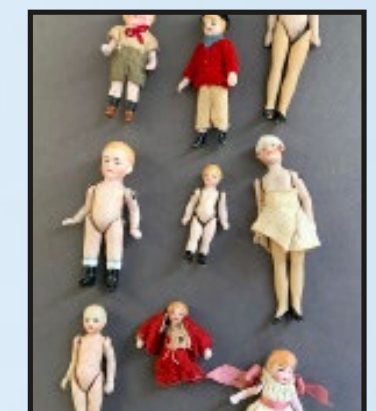
041



042



043



044



045



046



047



048

There will be no inspections of Dolls/Lots after the auction begins

*Withington Auction, Inc.*

*Dolls at Auction - June 16, 2022*



049



050



051



052



053



054



055



056



057



058



059



060



061



062



063



064

There will be no inspections of Dolls/Lots after the auction begins

Withington Auction, Inc.

10

Dolls at Auction - June 16, 2022

**49 2 – BISQUE DOLLS, 1 – 17” SHOULDER HEAD BELTON TYPE**, brown glass eyes, CM, brown HH wig, kid body (repairs) with bisque arms, blue gingham dress (wear), & 11” bald shoulder head, blue glass eyes, CM, blonde mohair wig, kid body with bisque arms, white needle work dress

**50 LOT OF 5 SMALL ALL BISQUE DOLLS 3” – 4 ½”** painted features, mohair wigs, 4 undressed, painted shoes & socks

**51 LOT OF 7 BLUE PTD. OUTFIT SMALL ALL BISQUE DOLLS 3 ½” – 5 ½”**, painted features, 6 are Googly eye, all are “chubby”, 6 have moveable arms, 3 are “Peterkin type”

**52 2 – ALL BISQUE DOLLS, 1 – 6 ½” “BABY BUD”** Germany Googly, brown glass sleep Googly eyes, OM w/ tongue, black mohair wig, ptd. & molded blue outfit, moveable arms, & 1 – 10414 Germany Kewpie-type Googly, blue bows above ears, jointed

**53 LOT OF 5 MIGNONETTES 3 ¼”T**, GLASS EYES, CM, mohair wigs, painted socks & shoe (red outfit boy has right foot toe chip), antique clothing, some have pegged joints

**54 LOT OF 6 – ALL BISQUE DOLLS 2 ¾” – 5”**, glass eyes, CM, 2 with mohair wigs, painted socks & shoes, 3 with peg joints, 2 need re-stringing

**55 LOT OF 11 SMALL ALL BISQUE DOLLS, 2 ¼” – 3”**, painted features, 2 have mohair wigs remaining have molded hair, most have peg joints, 5 have clothes

**56 LOT OF 5 SMALL ALL BISQUE DOLLS, 3 ½” – 5”**, painted features, CM, 2 – with mohair wigs, 1 – in white dress, moveable jointed arms

**57 LOT OF 8 SMALL ALL BISQUE FIGURES 1 ¼” – 4 ¼”**, painted features, molded clothes & bonnets, girl with shell from Richard Wright

**58 LOT OF 6 SMALL ALL BISQUE DOLLS 3 ½” – 4 ¼”**, painted features, CM, mohair wigs, painted socks (1 yellow) & shoes, regional outfits

**59 LOT OF 3 ANTIQUE DOLL CORSETS**, 2 – parasols 8” & 12 ¾”, & 1 – doll fur muff

**60 LOT OF 6 – SMALL ALL BISQUE DOLLS 3” – 5 ½”**, painted features, 2 – seated pacifier dolls, 2 – bent knee moveable arm dolls ( 1 in knitted dress), 1 – 129 Germany, painted pink socks, blond mohair wig, moveable arms, (repaired thumb), 1 – moveable arms, painted socks & shoes, antique white outfit

**61 LOT OF 7 SMALL ALL BISQUE DOLLS 3 ¾” – 6”** 208, 2 – 103N, painted features, 4 – mohair wigs, 5 – painted socks & shoes, 1 – wrestler type

**62 2 BISQUE HEAD DOLLS, 1- 6 ¼”** shoulder head, dome head, painted features, blond mohair wig, bisque arms & legs, burgundy dress, & 7 ¾” shoulder head, dome head, painted features, brown mohair wig, bisque arms & legs, yellow paper dress

**63 4 – SMALL ALL BISQUE DOLLS 5 ½” – 7”T**, glass eyes, mohair wigs, no clothes, 1 – Kestner 150 ptd. shoes & socks, 1 – bent leg character baby, no clothes, 1 – 30 s blue painted socks beige shoes, white dress & 1 – pink socks black shoes, (needs stringing, tiny chip back of head at rim)

**64 LOT OF 11 SMALL ALL BISQUE DOLLS**, painted features, 2 ¾” – 5”T, 1 – boy marked “Geyer”, 1 – 350 “Coquette” molded hair, 2 – seated dolls w/ sm. wood chairs, 5 – dolls 3 marked 505, jointed limbs (need stringing), 2 – non moveable figures, no clothes

There will be no Inspections of dolls / lots after the auction begins

Withington Auction, Inc. - June 16, 2022

**65 LOT OF 4 – ALL BISQUE DOLLS 5 ½” – 6”T**, 1 – dome head 31, brown glass eyes, CM, brown mohair wig, painted shoes & socks (left arm off), 1 – S&H 3, blue glass eyes, CM, no wig, black painted socks brown shoes, 1 – 4960?, brown glass sleep eyes, OM with teeth, auburn mohair wig, painted socks & shoes, pink dress, & 1 – Kestner 150, brown glass sleep eyes, OM with teeth, pink painted socks black shoes, blonde mohair wig, white needle work dress (excessive wig glue)

**66 LOT OF 3 ALL BISQUE DOLLS 7 ½” – 8”T**, 1 – Kestner 150 3, blue glass sleep eyes, OM with teeth, red mohair wig, blue painted socks black shoes. Blue dress, 1 – blue glass sleep eyes, OM with teeth, blonde mohair wig, painted white quilted socks & brown 2 strap shoes, white dress, & 1 – Kestner 208 “Baby Rose”, brown glass eyes, OM with teeth, brown mohair wig, white quilted socks with black shoes, no clothes

**67 LOT OF 9 – SMALL ALL BISQUE DOLLS 3” – 5 ¾”**, 2 – 833 bent knee, blue glass sleep eyes, OM with teeth, 1 with mohair wig, no clothes, 1 – removable bisque hat, painted features, blue ribbon, 1 – AK 635 Bavaria crawling baby painted features Googly eyes, 1 – bathing beauty, painted features, moveable arms, beige swimsuit, 1 – all bisque clown, moveable joints, 1 – molded blue bonnet parian type, moveable joints, 1 – Gerbruder Heubach, painted features, moveable arms, & 1 – small “Flapper” type molded hat, painted features

**68 3 – CHARACTER BABY DOLLS, 1 – 5” ALL BISQUE 583**, blue glass sleep eyes, CM, blonde mohair wig, white dress (2 chipped finger left hand), 1 – 8” all bisque, painted features, O/CM, bent limb body, & 1 – 3 – 2/0, blue glass sleep eyes, OM, baby compo body, white dress

**69 LOT OF 9 – 1 – 8” BISQUE SHOULDER HEAD**, painted features, cloth body, blonde molded hair, bisque arms & legs, 1 – 7” bisque molded half doll, painted features, black pants, yellow shoes, 1 – 9 ½” bisque molded bust of woman 1694, painted features on round pedestal, 1 – bisque painted figure “tough guy” (left toe rub). 5 – assorted painted bisque items

**70 3 – BISQUE DOLLS, 1 – 12” BISQUE 2 1/2/0 SHOULDER HEAD** Belton type, brown glass eyes, CM, brown mohair wig, kid body, bisque arms, white dress (missing 1 shoe), 12” bisque Kestner 152, blue glass sleep eyes (loose in head), OM with teeth, blonde mohair wig, BJCB, white undergarment, & 1 – 9” bisque shoulder head 1044 2/0 Belton type, blue glass eyes, CM, brown mohair wig, cloth body with bisque arms, beige needle work dress

**71 LOT OF 8 SMALL ALL BISQUE DOLLS 3” – 5 ½”T**, painted features, CM, 6 with pinned joints, mold marks 2 – 520, 516, 620, 341, 6248, 1 dressed, 3 mohair wigs, 1 – molded hair

**72 LOT OF 7 – SMALL BISQUE HEAD DOLLS, 1 – 7” KESTNER 260**, blue glass sleep eyes, OM with teeth, blonde mohair wig, straight wrist toddler body, yellow knit outfit, 1 – 6 ½” 409-18 Heubach Koppelsdorf, blue glass sleep eyes, OM with teeth, brown mohair wig, straight wrist compo body, yellow slip, painted shoes & socks, 1 – 6” 35- 12/0 Googly, painted features, no wig, very rough compo body (needs stringing), 1 – 8” S&H 950 shoulder head, brown painted sleep eyes, CM, brown braided mohair wig, cloth body, regional outfit, 1 – 8” Kling 123 shoulder head, blue glass eyes, CM, red mohair wig, cloth body with bisque arms, pink skirt, 1 – 8” blue glass eyes, CM, blonde mohair wig, regional out fit, & 5 ½” A140M, brown glass sleep eyes, OM with teeth, brown mohair wig, comp toddler body, green dress with lace, (needs stringing),

**73 LOT OF 4 – 1 – 5 ½” ALL BISQUE 208 3**, brown glass eyes, CM, brown mohair wig, painted socks & shoes, regional outfit, 1 – 5” barefoot wrestler, blue glass sleep eyes, CM, blonde mohair wig, peg joints, (right heel chip, left hip chip) no clothes, 1 – 8” low brow china, painted features, cloth body, china limbs, orange/black dress (wear), & 1 – 5 ½” bisque half doll, blue glass eyes, OM with teeth, no wig, long paper dress

**74 2 – 4 ½” ALL BISQUE 292 GOOGLIES**, brown side glancing glass eyes, CM, mohair wigs, jointed limbs), ptd. blue socks & black shoes, original outfits (1 has tiny chip at top of neck joint)

**75 15 ½” HEUBACH 7602 CHARACTER BOY**, intaglio eyes, closed pouty mouth, brushed blonde hair, 5 piece toddler compo body, blue check sailor suit, (few light facial rubs, faint firing line right ear)

**76 12” SCHOENHUT BABY, PAINTED FEATURES**, CM, blonde mohair wig, long white dress, Schoenhut label on head & body

**77 13” BISQUE SWIVEL NECK 7, O/CM**, blue glass eyes, blonde mohair wig, kid body (left knee repair), bisque arms, beige dress

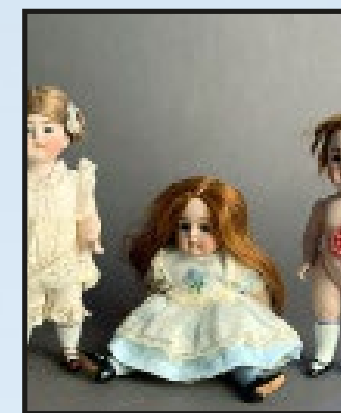
**78 24” LENCI SWIVEL NECK BOUDOIR DOLL**, painted features, blonde hair, felt cloth body, embossed organdy dress (stains), Sotheby’s tag

**79 12” BISQUE BELTON TYPE 46/2**, blue glass eyes, CM, blonde mohair wig, straight wrist compo body, antique blue dress, (neck should be re-strung, repaired)

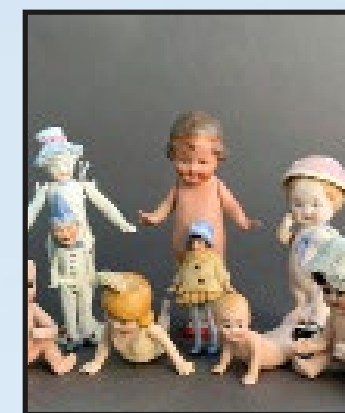
**80 21” SCHOENHUT GIRL, PAINTED FEATURES**, blonde mohair wig, Schoenhut marked body, white/red dress



065



066



067



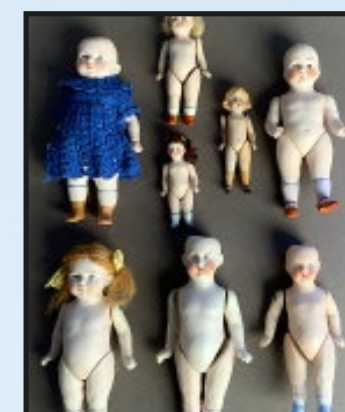
068



069



070



071



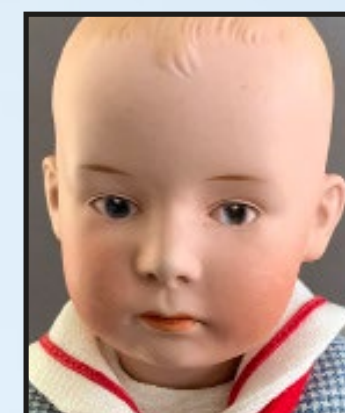
072



073



074



075



076



077



078



079



080



081



082



083



084



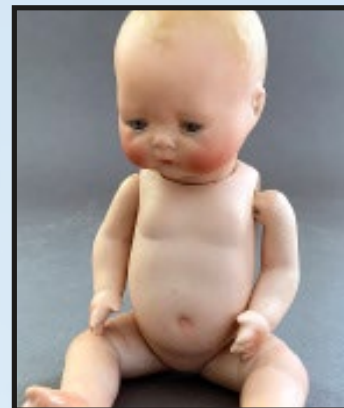
085



086



087



088



089



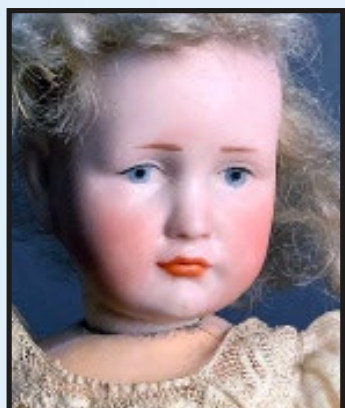
090



091



092



093



094



095



096

**81 10" K\*R 126 TODDLER, BROWN GLASS SLEEP EYES**, OM with teeth, blonde mohair wig, compo toddler body (right arm repair, crack to right leg), red pattern dress (faded)

**82 11 1/2" PAPER MACHE, PAINTED FEATURES**, black sculpted hair, cloth body with wood limbs (repaint), antique clothing (melting), (some crazing to face)

**83 16 1/2" FRENCH FASHION SWIVEL NECK 4**, blue glass eyes, CM, PE, brown HH wig, kid body, peach/white walking suit, (pate glued down)

**84 2 - 4 1/2" KESTNER 292 SWIVEL HEAD GOOGLY DOLLS**, blue right side glancing glass eyes, watermelon mouth, blonde mohair wigs, blue painted socks with black shoes, original outfit

**85 16 1/2" KATHE KRUSE BOY, MOLDED MUSLIN HEAD**, painted features, wide hips, CM, jointed body, white/blue outfit, (nose & head rubs)

**86 9 1/2" AM 250 CHARACTER CHILD**, painted features, OM with teeth, jointed compo toddler body (replaced hands, right leg damage), white dress

**87 14 1/2" SCHOENHUT, PAINTED FEATURES, CM**, red mohair wig, jointed body, brown dress, (nose rub)

**88 8" ALL BISQUE 1924 HORSEMAN TYNIE BABY**, blue glass sleep eyes, molded hair, no clothes

**89 3 - SMALL ALL BISQUE DOLLS**, 1 - 4 1/2" blue glass sleep eyes, blonde mohair wig, OM with teeth, painted shoes & socks (leg at hip tiny chips), 1 - 5" brown glass eyes, blonde mohair wig, CM, bent arm, painted shoes & socks, & 1 - 5" pin cushion doll, painted features, blonde mohair wig, painted shoes & socks

**90 9 1/2" K\*R 101 "MARIE"**, PAINTED FEATURES, blond braided mohair, wig, compo body, early outfit, 2nd place ribbon

**91 22" FELT LENCI, PAINTED FEATURES**, side glancing eyes, blonde mohair wig, pink outfit, button leggings with pink shoes, Lenci tag, (soiling)

**92 14" BISQUE 116A CHARACTER BABY**, blue glass sleep eyes, OC/M with teeth, blonde mohair wig, baby compo body, long white outfit, (could use re-stringing)

**93 7 1/2" K\*R 114, PAINTED FEATURES, CM**, blonde mohair wig, compo body (rough spots), white dress, (needs re-stringing)

**94 14" BISQUE (KESTNER?) UNMARKED**, blue glass sleep eyes, OM with 2 square teeth, blonde mohair wig (glued down), straight wrist compo body (arm wear) with pull strings & mama/papa crier (works sometimes), white dress (faded)

**95 14" SCHOENHUT BOY, PAINTED FEATURES**, blonde mohair wig, blue outfit (wear), 1 shoe

**96 8" KESTNER 143, BROWN GLASS EYES**, OM with teeth, blonde mohair wig, straight wrist compo body, white dress (wear, body needs re-stringing)

There will be no inspections of Dolls/Lots after the auction begins

Withington Auction, Inc. (14) Dolls at Auction - June 16, 2022

There will be no Inspections of dolls / lots after the auction begins

Withington Auction, Inc. - June 16, 2022

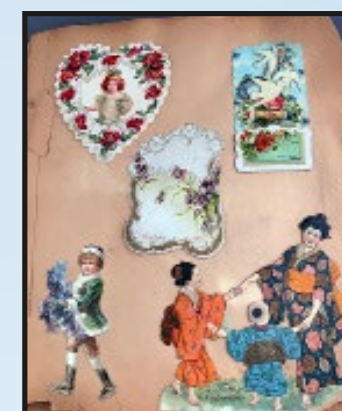
- 97 23" SFBJ 301 PARIS**, blue glass sleep eyes, PE (nick), OM with teeth, brown HH wig, SFBJ label compo body, beige/blue shear outfit
- 98 24" SFBJ 236 PARIS BABY**, brown glass sleep eyes, OM with teeth, red mohair wig, compo body (dirty hands), white dress (melting), (excessive wig glue)
- 99 LARGE SCRAP BOOK WITH EARLY 1900'S VALENTINE** cards some home-made, along with a few early Christmas & Easter cards
- 100 15 ½" BISQUE K\*R 101 "MARIE"**, painted features, CM, HH wig, BJCB, original outfit, (wig pulls, body crazing, left hand finger damage)
- 101 11" BISQUE HEUBACH 7550?**, blue glass sleep eyes, OC/M with molded tongue, blonde mohair wig, BJCB, pink/blue outfit (wear), white shoes, (some wig glue residue)
- 102 10 ½" BISQUE HEUBACH 8774 "WHISTLER"**, painted features, molded blonde hair, whistling mouth, cloth body with bisque arms, blue gingham outfit (wear), holding a mohair monkey
- 103 11" BISQUE KESTNER 178 CHARACTER**, painted features, CM, blonde mohair wig, BJCB, white/black sailor outfit
- 104 16" BISQUE S&H 905 SWIVEL HEAD** shoulder plate, blue glass eyes, CM, PE (tiny left ear nick), brown mohair wig, kid body with bisque arms, purple antique walk-ing suit
- 105 13 ½" BISQUE K\*R 100 BLACK CHARACTER BABY**, painted features, OM, painted black wispy hair, black compo body, blue/white stripe suit
- 106 9" ALL BISQUE BRUNO SCHMIDT 425** character baby, painted features, blond wispy hair, CM, white knit outfit (in manufacture rough spot back of head)
- 107 17 ½" STOCKING & NEEDLE SCULPTED FLAPPER** style lady, cloth body, red hair, antique outfit (wear)
- 108 15 ½" BURGARELLA ITALY DOLL**, painted features, composition socket head & body, side glancing eyes, brown mohair wig, blue/white outfit, UFDC 1st place ribbon Chicago 2010, (very faint nose rub)
- 109 9" PAPER MACHE MILLINERS MODEL**, painted features, sculpted black hair, cloth body with wood limbs, antique blur dress (melting) (cracks to shoulder plate & ear to face)
- 110 17" BISQUE S.F.B.J. 237 PARIS BOY**, brown glass eyes, OM with teeth, slightly molded hair, BJCB, white outfit, brown shoes
- 111 17" CARTON MOULE FRENCH PAPER MACHE SHOULDER HEAD**, painted features, black painted hair with brown mohair wig, kid body, antique regional blue/brown outfit (1 seam coming apart) (some facial hairlines)
- 112 15" BISQUE AM 400 CHARACTER**, BLUE GLASS SLEEP EYES, CM, BJCB (touchups), mohair blonde wig, green/red/white outfit, (some rim excessive glue)



097



098



099



100



101



102



103



104



105



106



107



108



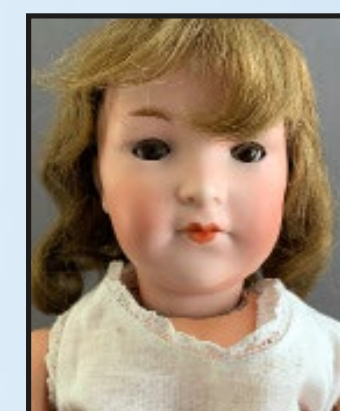
109



110



111



112



113



114



115



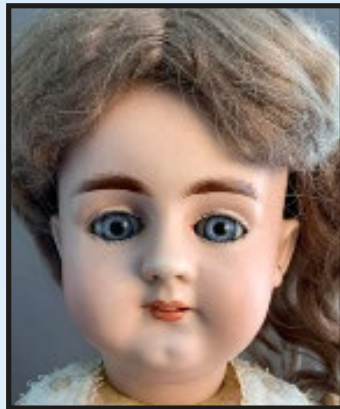
116



117



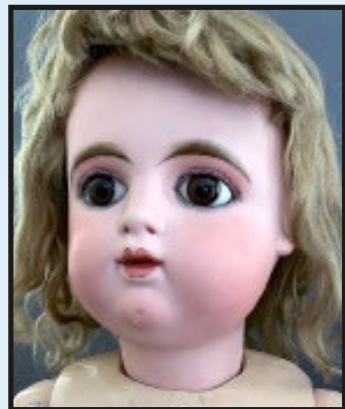
118



119



120



121



122



123



124



125



126



127



128

**113 22" BISQUE S.F.B.J. 250 PARIS**, blue glass sleep eyes, OM with teeth, PE ( left nick), brown mohair wig, BJCB set up for mama/papa crier, white/blue outfit

**114 17 ½" BISQUE HEUBACH "SANTA"**, brown glass sleep eyes, OM with teeth, blonde mohair wig, BJCB, blue dress, ( dark line in mold above right ear to rim appears to be from firing)

**115 19 ½" S&H 1159 DEP LADY DOLL**. Blue glass sleep eyes, OM with teeth, PE, lady compo body with Jumeau stamp, brown mohair wig, green floral dress

**116 18" CLOTH MAGGIE-BESSIE FROM SALEM NC**, painted oil cloth features, muslin cloth body with oil painted limbs, early white cotton outfit (some holes), This fine example was in the collection of Shirley Temple, sold by Theriaults

**117 23" MARTHA WELLINGTON CLOTH DOLL FROM BROOKLINE** Massachusetts, circa 1880's, oil cloth painted features, stuffed stockinette cloth body, antique clothing & white christening gown, (some facial rubs)

**118 20" BISQUE JULES STEINER MOTSCHMANN**, swivel head shoulder plate, blue glass eyes, CM, blonde mohair wig, taufling body with bisque limbs, (tiny firing line by left eye corner), white outfits

**119 21" BISQUE 979 S&H**, blue glass sleep eyes (right eye corner flake), OM with teeth, brown mohair wig, PE, BJCB, blue/white dress

**120 25" RED STAMP DEPOSE TETE JUMEAU 12**, blue glass eyes, CM, PE (tiny chips), blonde mohair wig, compo stamped Jumeau body (some repaint), 2 – white/red outfits, brown leather shoes

**121 30" F G SCROLL MARK 13**, brown glass eyes, CM, PE, blonde mohair wig, compo body (flaking & repaint areas), purple/blue/red dress

**122 18 ½" BISQUE S.F.B.J. 235 PARIS CHARACTER**, blue glass eyes, smiling mouth, molded hair, compo body (damage & 1 replaced leg, black/red outfit, (cheek rubs)

**123 24" BLACK HAIR CHINA**, painted features, sculpted hair, cloth body with leather arms, antique purple/black/white outfit

**124 OIL ON CANVAS AMERICAN OR ENGLISH SCHOOL**, canvas size 28 ½" x 36", mother & daughter seated, heavy OG frame, circa 1840, some area touchups, 1 tiny are of paint loss above head

**125 27" FRENCH BISQUE INCISED "12." JOANNY ATTRIBUTATION**, blue glass paperweight inset eyes, CM, PE (right nick), dark blonde HH wig, French compo body, pale white silk dress (melting), professional restoration to forehead & neck base

**126 13" ALL PORCELAIN PINK TINT FROZEN CHARLOTTE**, painted features, blonde wispy hair, knit outfit

**127 14" WAX OVER COMPO, BLUE GLASS SLEEP EYES**, CM, blonde mohair wig, cloth body, antique pink dress, (head crazing & cracks)

**128 15" S&H 949, BLUE GLASS PAPERWEIGHT EYES**, OM with teeth, PE, blonde mohair wig, new compo body, white outfit

There will be no Inspections of dolls / lots after the auction begins

*Withington Auction, Inc. - June 16, 2022*

There will be no inspections of Dolls/Lots after the auction begins

*Withington Auction, Inc.*

18

*Dolls at Auction - June 16, 2022*

**129 12" CHASE CLOTH DOLL**, painted features, blue gingham outfit, (wear to hair paint some facial rubs)

**130 25" PINK TINT CENTER PART BLACK HAIR CHINA**, painted features, cloth body with kid arms, white floral dress, red leather shoes

**131 20" QUEEN ANNE WOOD DOLL**, black pupiless eyes, brown HH wig, dotted eye-lashes, jointed wood body & limbs, silk mauve dress (1 slipper), (head & shoulder repaint)

**132 2 – TOPSY TURVEY DOLLS**, 1 - 18" Black/White Topsy Turvey cloth doll, painted features, early red wool dress (melting), an early example, 1 – 12" Black/White, stitched features, cloth body, antique red check dress (melting)

**133 2 – BISQUE CHARACTER BABY DOLLS**, 1 – K\*R 100, painted features, compo baby body, white dress, & 1 – incised 152, blue glass sleep eyes, OM, brown mohair wig, baby compo body, white dress, (hairline on forehead)

**134 10 – MAMMOTH STORY BLOCKS**, wood litho covered 10 nesting blocks by J. A. Crandall's, Marriage of Jenny Wren and death of Cock Robin, patent June 28th 1881, play wear

**135 LOT OF ASSORTED ANTIQUE DOLL CLOTHES & doll shoes**

**136 LOT OF ASSORTED ANTIQUE/VINTAGE DOLL clothes & accessories in red trunk**

**137 2 – BLACK HAIR CENTER PART LOW BROW CHINAS**, 1 – 11", painted features, kid body with bisque arms, antique dress, & 1 – 18", painted features, cloth body china limbs, antique blue silk dress

**138 5 – RAGGEDY ANN & ANDY CLOTH DOLLS 17" – 19" TALL**, stitched features, button eyes, as found

**139 2 – 20" ANTIQUE CLOTH STITCHED AND ELABORATE EMBROIDERED** soldier dolls with extra hats

**140 3 – FRAMED ITEMS**, 1 – 9" x 11" paper fashion lady dresses, 1 – 14 1/2" antique square quilted fabric sample, 1 – 12 1/2" x 16 1/2" white doll nurses outfit

**141 13 – PIECES OF RED/WHITE POLKA DOT ENAMEL CHILD'S TEA SET**, 6" tall red tea pot, 6 polka dot cups & saucers

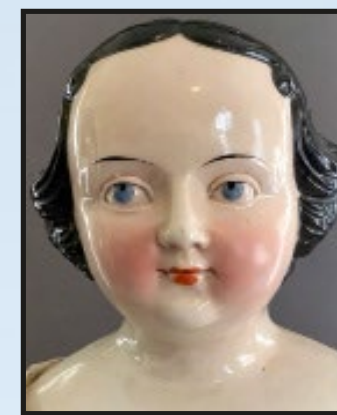
**142 16" CHASE CLOTH DOLL**, painted features, blonde wispy hair, white floral dress (hair rubs)

**143 3 – CLOTH DOLLS, 1 – 35" BLACK CLOTH DOLL**, stitched features, cloth embroidered hair, antique blue dress (faded), 13" & 14" feature less dolls, antique blue outfits

**144 2 – STEIFF ANIMALS**, 1 – 9" early blonde mohair cat (very worn), & 9" mohair monkey



129



130



131



132



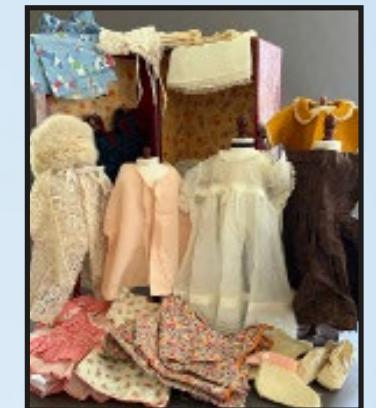
133



134



135



136



137



138



139



140



141



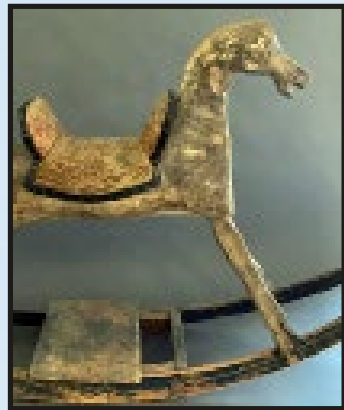
142



143



144



145



146



147



148



149



150



151



152



153



154



155



156



157



158



159



160

**145 45" LONG ANTIQUE WOOD PAINT DECORATED ROCKING HORSE** with original upholstered saddle, flax tail (restorations & breaks)

**146 PAINT DECORATED JOEL ELLIS-STYLE WHEELED DOLL'S CARRIAGE**, with fringed hood

**147 25" TALL EARLY CHILD'S LADDER BACK ROCKING CHAIR** in red wash, upholstered seat, age wear, has been used as a child's walker

**148 GERMAN COUNTRY STORE ROOM BOX 35" LONG X 16" DEEP**, angle sides, with store shelves & drawers, some repairs needed

**149 2 – PEG WOODEN DOLLS**, 1 – 12 1/2" carved & painted features, jointed carved body antique dress, & 11 1/2" carved & painted features, jointed wood body, antique dress

**150 LOT OF 3 – 1 – 8 1/2" EARLY CARVED WOOD HEAD DOLL WITH CHILD**, woman has cloth body, child has wood body & limbs, antique clothes & 17 1/2" reproduction cage doll with painted features

**151 24" SIMON & HALBIG 1294 BABY**, blue glass sleep eyes, OM, blonde mohair wig, compo baby body, blue/white outfit (wig pulls, repaired little finger right hand, check rub)

**152 35" S&H 1079 DEP**, blue glass eyes, OM with teeth, PE, BJCB, red HH wig, antique dress, (eye areas have places of repaint?)

**153 BLISS TYPE PAPER LITHOGRAPH FIREHOUSE/MILL/WELL TOWER?**, 2 story, 16 1/2" tall x 4" wide, blue painted roof with chain lift from 1st to 2nd floor, (wear)

**154 11" BRU JNE 2 "KISSING BRU"**, swivel neck, brown paperweight eyes, CM, PE, blonde mohair wig, straight wrist compo body with pull string to hinged right arm, (tiny nose pock)

**155 11" DEPOSE TETE JUMEAU S.G.D.G. 3**, brown paperweight eyes, CM, PE, blonde mohair wig (glued down), marked Jumeau compo body (nose pocks, 2 finger cracks right hand), knit dress, with small knit doll

**156 10" DEPOSE TETE JUMEAU, S.G.D.G. 1**, brown paperweight eyes, CM, PE, blonde braided mohair wig, straight wrist compo body, pate glued down, white dress

**157 10 1/2" STEINER PARIS F – A – 3**, BLUE GLASS PAPERWEIGHT EYES, CM, PE (left ear nick), straight wrist compo body, white floral dress, (wig glue)

**158 7 1/2" K\*R 101 MARIE**, blue glass sleep eyes, CM, blonde mohair wig, BJCB, blue dress, (lose leg)

**159 8 1/2" JDK 260**, BLUE GLASS SLEEP EYES, OM with teeth, blonde mohair wig, straight wrist compo body, white dress

**160 CHASE BABY, 17" TALL, ANTIQUE DRESS**, excellent paint, brown eyes,

There will be no Inspections of dolls / lots after the auction begins

*Withington Auction, Inc. - June 16, 2022*

There will be no inspections of Dolls/Lots after the auction begins

*Withington Auction, Inc.*

22

*Dolls at Auction - June 16, 2022*

- 161 CHASE BABY, 13" TALL, original paper label, antique dress, blue eyes
- 162 CHASE BABY, 12" TALL, antique clothes, brown eyes, paint rubs
- 163 CHASE BABY, 13" TALL, vintage overalls, blue eyes
- 164 CHASE BABY, 12" TALL, antique clothes, brown eyes, nose rub
- 165 CHASE BABY, 12" TALL, vintage clothes, blue eyes
- 166 CHASE BABY, 14" TALL, antique clothes, blue eyes, some flaking
- 167 CHASE BABY, 13" TALL, antique clothes, blue eyes
- 168 CHASE BABY, 16" TALL, antique clothes, blue eyes
- 169 PAINTED EYE GOOGLY, 6 ½" TALL, compo, 5 piece body, red headband, Goebel mark, antique clothes red stripe, painted red shoes
- 170 AM 323 GOOGLY, SLEEP BLUE EYES, 6" tall, 5 piece body, painted shoes & socks, red mohair wig
- 171 AM 323 GOOGLY, SLEEP BROWN EYES, 7" tall, 5 piece compo body, painted shoes & socks, blonde mohair wig, red check outfit, (rough main body)
- 172 ALL BISQUE, SIMON HALBIG, BLUE EYES, 7" tall, CM, Black painted boots, nicely dressed, red braided mohair wig
- 173 121 BRU FACED BELTON, MARKED 121, antique clothing and shoes, 9" tall, small eye chip, set brown eyes, BJCB, brown braided mohair wig
- 174 SIMON HALBIG 1279, BLUE EYES, BJCB, 10" tall, wig glued down, brown mohair wig, white dress, former collection of Dolores Smith
- 175 ALL BISQUE, 5" TALL, PAINTED FEATURES, yellow boots, marked 208, blonde mohair wig, white dress
- 176 KESTNER SIZE 1, PLASTER PATE, OM, brown sleep eyes, 8 ½" tall, BJCB, blonde mohair wig, blue gingham dress



There will be no Inspections of dolls / lots after the auction begins

*Withington Auction, Inc. - June 16, 2022*



177



178



179



180



181



182



183



184



185



186



187



188



189



190



191



192

**177 KESTNER 128, OM, 10" TALL**, blue sleep eyes, BJCB, original plaster pate, antique white clothes, blonde mohair wig

**178 KESTNER, OM, 9 ½" TALL**, brown sleep eyes, BJCB, plaster pate, antique floral clothes and hat, blonde mohair wig, wig pull

**179 UNMARKED BISQUE HEAD, CM**, blue set eyes, 10" tall, BJCB, hairline forehead, antique blue floral outfit, blonde mohair wig

**180 MOON FACED KESTNER, CM, 12" TALL**, brown set eyes, BJCB, repaired eye chip, antique clothes and hat

**181 KESTNER 143, OM, 11" TALL**, blue sleep eyes, BJCB, blue dress, blonde mohair wig, (tiny right eye chip, wig glue)

**182 UNMARKED SHOULDER HEAD, KID BODY**, antique clothes, grey set eyes, 12" tall

**183 131 BISQUE HEAD, 6 ½" tall**, BJCB, brown set eyes, CM, blonde braided mohair wig, antique clothes

**184 TR BELTON TYPE, BLUE SET EYES, CM, PE, 12" tall**, BJCB, blonde mohair wig, green dress

**185 11" BISQUE HEAD MARKED 300, BJCB, OM**, set blue eyes, antique clothes and shoes, blonde mohair wig

**186 KESTNER 154, KID BODY, 12" tall**, sleep blue eyes, antique clothes

**187 AM 3500, 11 ½" TALL, BJCB**, brown sleep eyes, OM with teeth, antique white clothes, brown mohair wig

**188 AM 323 GOOGLY**, possible reproduction head, 12" tall, BJCB, blue set eyes, brown mohair wig

**189 11 ½" KESTNER, MARKED D**, shoulder head, brown set eyes, cloth body with bisque arms, antique white clothes, plaster pate

**190 BELTON TYPE MARKED 1, 12" tall**, blue set eyes, CM, PE, BJCB, brown mohair wig, red dress

**191 SFBJ MARKED 3**, blue sleep eyes, BJCB, 12 ½" tall, PE, OM with teeth, blonde mohair wig, blue/white dress

**192 BELTON TYPE MARKED 203**, blue set PW eyes, O/CM, PE, blonde mohair wig, 11" tall, BJCB, yellow dress

There will be no inspections of Dolls/Lots after the auction begins

Withington Auction, Inc. (26) Dolls at Auction - June 16, 2022

There will be no Inspections of dolls / lots after the auction begins

Withington Auction, Inc. - June 16, 2022

- 193 KESTNER 156, 12" TALL, BJCB, brown sleep eyes, OM with teeth, wig pulls, blonde mohair wig, white dress**
- 194 GK 13/22 BELTON TYPE, wig pulls, 11 ½" tall, BJCB, blue set eyes, O/CM, red mohair wig, green dress**
- 195 1079 SIMON HALBIG, 11 ½" tall, BJCB, blue sleep eyes, PE, OM with teeth, brown mohair wig (wig pulls), red floral dress**
- 196 BELTON TYPE MARKED 2, some nose pitting, brown set eyes, compo 5 piece body, PE, O/CM, 11" tall, blonde mohair wig, knit dress**
- 197 BELTON TYPE SHOULDER HEAD, MARKED 1022 GK, blue set PW eyes, CM, antique clothes and shoes, kid body with bisque arms, 11" tall, blonde mohair wig**
- 198 KESTNER MARKED B, BROWN SLEEP EYES, plaster pate, BJCB, 12" tall, dressed as a boy**
- 199 KESTNER 167, BROWN SLEEP EYES, PLASTER PATE, BJCB, 12" tall, OM with teeth, blonde mohair wig, floral dress**
- 200 BELTON TYPE SIZE 0, BLUE SET EYES, CM, right eye chip repair, odd compo body, 9" tall, white dress**
- 201 GERMAN BELTON TYPE SHOULDER HEAD, blue set eyes, blonde mohair wig, kid body with bisque arms, 14" tall, floral dress**
- 202 BELTON TYPE, MARKED 197, CM, PE, some pitting (forehead, cheek), ear flake, blue set eyes, blonde mohair wig, BJCB, 11 ½" tall, blue check antique dress**
- 203 BELTON TYPE, BP 204, BROWN EYES, BJCB, 14" tall, CM, PE, blonde mohair wig, white antique clothes**
- 204 KESTNER MARKED 8, BJCB, 13" TALL, sleep brown eyes, left eye flake, red mohair wig, white antique clothes**
- 205 BELTON TYPE, MARKED 0, BLUE PW SET EYES, PE, BJCB, 13 ½", blonde mohair wig, white antique clothes**
- 206 MOON FACED KESTNER, BLUE SET EYES, BJCB, 11" tall, hairline forehead, blonde mohair wig, white antique clothes**
- 207 KESTNER, MARKED 169, CM, BJCB 14", blue sleep eyes, hairline forehead, antique clothes, CM**
- 208 GERMAN MARKED 604, BLUE SET EYES, BJCB, 14" tall, OM with teeth, pimples in bisque forehead, blonde mohair wig, white/red/black outfit**



193



194



195



196



197



198



199



200



201



202



203



204



205



206



207



208



209



210



211



212



213



214



215



216



217



218



219



220



221



222



223



224

- 209 2 FACE CELLULOID AND CLOTH DOLL**, original clothes, 13" tall, with German tag
- 210 TETE JUMEAU SIZE 5**, brown set eyes, original Jumeau chemise, CM, PE (right nick), Jumeau mark compo body (wear to left hand), 14" tall, HH wig, cork pate, antique dress
- 211 TETE JUMEAU MARKED 5**, OM, Blue PW eyes, BJCB, 14" tall, PE fleck on ear, blonde mohair wig, purple antique dress
- 212 2 FACE BISQUE HEAD, SMILING AND POUTY**, 12", BJCB, possibly Simon Halbig, closed mouth, blue set eyes, blue antique dress
- 213 6" ALL BISQUE 217, GOOGLY**, sleep brown eyes, cheek rub, blonde mohair wig, possibly replaced legs
- 214 ALL BISQUE 189, GOOGLY, 5" TALL**, brown sleep eyes, swivel head, brown mohair wig, painted shoes & socks
- 215 ALL BISQUE 217, GOOGLY, 5 1/2" TALL**, blue eyes, hairline forehead, brown mohair wig, painted shoes & socks
- 216 ALL BISQUE 217, GOOGLY, 6" TALL**, blue sleep eyes, brown mohair wig, painted socks & shoes
- 217 ALL BISQUE 189, GOOGLY, 5" TALL, BROWN SLEEP EYES**, swivel head, brown mohair wig, painted shoes & socks, regional costume
- 218 LOT - MARKLIN CARRIAGE WHITE PAINT**, former collection of Dolores Smith with 3 all bisque babies, front scroll break
- 219 6 1/2" ALL BISQUE, WRESTLER TYPE**, brown sleep eyes, CM, rim chip, yellow fancy boots, knit outfit
- 220 MAGGIE IACONO JOSPHINE, LITTLE WOMEN 12"**, felt doll, painted features
- 221 SIMON HALBIG 749, BJCB, 19" TALL**, repaired forehead, CM, blue set eyes, brown mohair wig
- 222 R. JOHN WRIGHT LITTLE MISS STARSTRUCK 8" TALL FELT DOLL**, UFDC 70th convention
- 223 LOT OF TWO ALL BISQUE DOLLS BOY AND GIRL**. 3 1/2' tall, boy has glass eyes, girl has painted eyes, both swivel heads
- 224 LOT OF TWO ALL BISQUE DOLLS**, one antique marked 203, stiff neck, yellow boots, 5 1/2" tall. Second is an artist doll by Pat Boldt 2017, beautifully dressed 6" tall, glass eyes

There will be no inspections of Dolls/Lots after the auction begins

Withington Auction, Inc.

30

Dolls at Auction - June 16, 2022

There will be no Inspections of dolls / lots after the auction begins

Withington Auction, Inc. - June 16, 2022

- 225 LOT OF 2 ALL BISQUE BABIES**, one bylo, glass sleep eyes, 4” tall, second is bisque baby, sleep blue eyes, marked 14 P and is 5” tall
- 226 BELTON TYPE, MARKED 50**, cloth body, compo arms and legs, painted shoes, blue glass eyes, CM, PE, brown mohair wig, 10 ½” tall
- 227 BELTON TYPE, 13 ½” TALL, CM**, BJCB (broken right thumb), marked 603 with a triangle and moon, pitting, rough bisque, brown set eyes, repaired neck, brown mohair wig, dressed as a boy
- 228 18” KESTNER MARKED 12**, OM square teeth, (left eye chip), blue glass eyes, BJCB, red mohair wig, brown dress
- 229 STEIFF BEAR ON WHEELS**, former Dolores Smith collection, 10” long, no button, age wear, tail wear
- 230 FRENCH FG, SCROLL MARK, WIG PULLS**, PE, OM with teeth, blue eyes, 16 ½” tall, BJCB, brown mohair wig, blue/white dress
- 231 BELTON TYPE, CM, BJCB, MARKED 2/0**, blue set eyes, 10” tall, blonde mohair wig, peach dress, (left eye tiny corner chip)
- 232 BELTON TYPE, CM, PE, BJCB**, blue set eyes, 13” tall, red mohair wig, blue/white outfit
- 233 BELTON TYPE, CM, BLUE SET EYES**, (right lower eye flakes), BJCB, 15” tall, blonde mohair wig, white/blue floral dress
- 234 MOON FACED KESTNER 6**, BJCB, 14” tall, brown sleep eyes, CM, blonde mohair wig, white dress with trim, (pock mark right cheek)
- 235 BELTON TYPE, BLUE SET EYES, CM**, skin wig, antique clothes, marked 2, unusual composition body, pegged neck attachment 10” tall
- 236 BELTON TYPE MARKED 3, BLUE SET EYES**, CM, BJCB, red mohair wig, pegged neck attachment, 10” tall
- 237 SIMON HALBIG 1009, FORMER DOLORES SMITH collection**, blue sleep eyes, OM with teeth, PE, BJCB (broken 2nd finger left hand), tiny ear flake, 10 ½” tall, white dress
- 238 BELTON TYPE MARKED 5, BLUE SET EYES**, CM, PE, brown mohair braided wig, BJCB (repairs to lower leg), beautiful antique clothes, 12” tall
- 239 15” MOON FACED KESTNER**, swivel head, CM, blue set eyes, original pate, kid body with bisque arms, brown mohair wig, white dress, marked 7.
- 240 BLISS NOAH’S ARK 13” LONG**, litho over wood, hinged roof, no animals



225



226



227



228



229



230



231



232



233



234



235



236



237



238



239



240



241



242



243



244



245



246



247



248



249



250



251



252



253



254



255



256

- 241 S.G.D.G. TETE JUMEAU SIZE 9**, OM with teeth, PE, blue PW eyes, brown mohair wig, 24" tall, BJCB crier body, white dress
- 242 BELTON TYPE, MARKED 183**, brown set eyes, CM, PE (left eye nick), 13" tall, BJCB, blonde mohair wig, blue check dress
- 243 BELTON TYPE, BLUE SET EYES**, CM, PE, 12" tall, blonde mohair wig, BJCB, in underwear and white shoes
- 244 DEP, CM, PE, HAIRLINE FOREHEAD**, 14" tall, BJCB, blue PW eyes, white dress
- 245 LOT OF 16 – ASSORTED BOYD’S BEARS**, 4" – 13" various colors
- 246 LOT OF 6 ASSORTED STUFFED ANIMALS**, bears, duck, dog 3" – 16"
- 247 LOT OF 8 VINTAGE PULL/WINDUP/ROCKING TOYS** mostly horse themes, tin litho, & wood, as is condition
- 248 LOT OF 31 ASSORTED VINTAGE & MODERN doll carriages** 2" – 10", tin, plastic, cloth, etc, of all shapes & sizes
- 249 BOX LOT OF 28 ASSORTED SMALL DOLLS**, all bisque, compo, celluloid, plastic etc.
- 250 LOT OF 6 – SMALL STEIFF ANIMALS**, 8 ½" Cocker Spaniel, 8" rabbit pull toy, 8" seated rabbit, 5" mohair bear, 4" seated dog, & 4" dog
- 251 LOT OF 3 – 11" ARTIST CLOTH DOLLS**, painted features
- 252 LOT OF 4 – 2 – 7" IZANNAH WALKER ARTIST DOLLS**, 9" long lift top cedar trunk, & small patchwork quilt
- 253 LOT OF ASSORTED DOLL SHOES, SOCKS**, vintage clothes, etc.
- 254 16" IZANNAH WALKER ARTIST DOLL**, painted features in flat top trunk with 2 extra outfits
- 255 LOT OF 11 MODERN STEIFF MOHAIR BEARS** 3 ½" – 11", 10 have button/tags
- 256 LOT OF 4 SMALL DOLLS, 10 ½" BISQUE HEAD** **255 DEP**, blue glass eyes, cloth body with bisque limbs, CM, PE, 9" red hair artist doll, 8" Betsy McCall in plaid outfit, & Convention Souvenir dolls in small trunk UFDC 2017 "Little Woman Beth Loves Dolls" by Donell Denery

There will be no inspections of Dolls/Lots after the auction begins

Withington Auction, Inc. (34) Dolls at Auction - June 16, 2022

There will be no Inspections of dolls / lots after the auction begins

Withington Auction, Inc. - June 16, 2022

- 257 OPPORTUNITY BOX LOTS** of misc. doll smalls, toys, etc.
- 258 2 – STEIFF PULL TOYS**, 1 - Leo the Circus Lion in yellow/red paint wagon 9 ½” long, & 1 – 12” brown mohair bear on red wood wheels with red paint platform
- 259 10 ½” WAX HEAD PEDDLER, PEG WOOD BODY**, antique clothes, carrying tray of wares
- 260 11 ½” BISQUE 3 – FACE DOLL, HAPPY, SAD, & sleep faces**, compo body, pink dress, turn mechanism on top of head, (lose head)
- 261 11” MAN & WOMAN DOOR OF HOPE DOLLS**, carved wood heads, painted features, cloth bodies, ethnic clothing
- 262 14 – ASSORTED SMALL STEIFF animals**, 3” – 7” tall
- 263 27 ½” T x 13 ½”L x 10 ½”D ENGLISH 3 STORY APARTMENT BUILDING** with 3 floors of miniature furniture, “Hamley’s Noah’s Ark 86 & 87 High Holborn London W C tag on top, large front hinged door.
- 264 10” ALL BISQUE KEWPIE BY ROSIE O’NEIL**, painted features
- 265 10” JDK 172 GIBSON GIRL, BLUE GLASS SLEEP EYES, CM**, blonde mohair wig, cloth body with bisque limbs, antique outfit
- 266 12” FRENCH FASHION 0**, blue glass eyes, CM, PE, brown mohair wig, kid body, white undergarments
- 267 8 ½” ALL BISQUE SWIVEL NECK 102**, OM with teeth, PE, wrestler body, blonde mohair wig, yellow 5 strap painted boots, knit outfit, (faint firing flaw back of neck)
- 268 17” TALL GERMAN STOVE INSERT IN WOOD CASE** with assorted smalls
- 269 11 ½” TALL x 11” WIDE WOOD PAINTED BUNGALOW** style doll house with miniature furniture
- 270 17” TALL x 14 ½” WIDE PAINT & LITHO** decorated stable with assorted farm animals & farmer (crack to stable wood base)
- 271 LOT OF 30 PIECES OF VINTAGE & MODERN** Christmas ornaments
- 272 15” TALL x 11 ½” WIDE SCHOENHUT 2 STORY DOLL HOUSE** circ 1920’s with porch, & 11 pcs. of miniature furniture, & 2 original lights



257



258



259



260



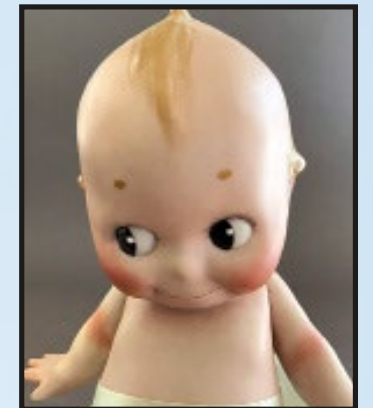
261



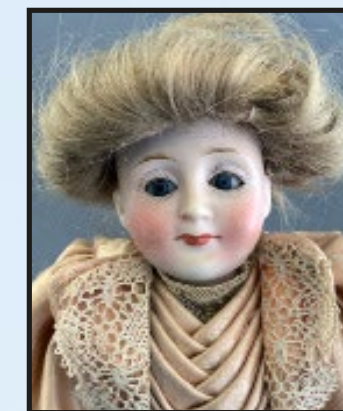
262



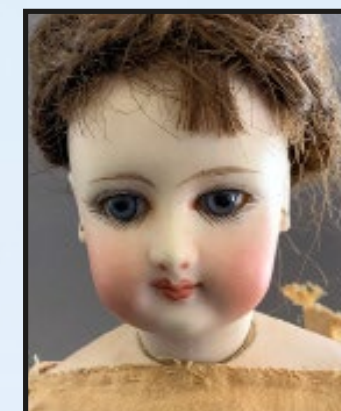
263



264



265



266



267



268



269



270



271



272



273



274



275



276



277



278



279



280



281



282



283



284



285



286



287



288

**273 6" HEUBACH BOY, INTAGLIO EYES, flocked hair, compo body, white outfit**

**274 18 1/2" LONG X 12" WIDE, German store room box (grocer) with contents & doll house doll**

**275 LOT OF 16 ASSORTED SMALL STEIFF MOHAIR ANIMALS, 5" – 9" tall, most with button & tags**

**276 13 1/2" LONG CURVED GLASS DISPLAY CASE of "Individually Baked" miniature dessert items**

**277 7" K\*R 114, PAINTED FEATURES, blonde mohair wig, compo body, white dress**

**278 4 – SMALL DOLLS 4" – 5" TALL, 1 – all bisque, painted features, blonde mohair wig, painted shoes & socks, 1 – all bisque Oriental, brown glass eyes, long braided mohair wig, ethnic dress, 1 – all bisque child with raised arms, painted features, & 1 – china, painted features, brown mohair wig, copper lustre boots, red dress**

**279 14 – SMALL ALL BISQUE BABY DOLLS, KEWPIE, snow baby, etc., 1 1/4" – 3", painted features**

**280 3 – 4" ALL BISQUE MIGNONETTES, 1 – brown glass eyes, blonde mohair wig, red knit outfit, painted high black boots, bent arms 1 – brown glass eyes, blonde mohair wig, bent arms, painted shoes & socks, stripe dress, & 1 – blue glass eyes, blonde mohair wig, painted shoes & socks. antique blue dress**

**281 3 – SMALL ALL BISQUE DOLLS 3" – 5", 1 – brown glass sleep eyes, blonde mohair wig, painted shoes & socks (no clothes), 1 – blue glass eyes, blonde mohair wig, bent limbs, barefoot, knit dress, & 1 – long eared rabbit head with blue glass eyes ?, painted shoes & socks, no outfit**

**282 LOT OF 12 ASSORTED SMALL ALL BISQUE DOLLS, 2" – 3 1/2" tall, various outfits & 1 – all bisque swimmer**

**283 LOT OF ASSORTED DAGUERREOTYPES, & early pictures frames, photos, etc.**

**284 LOT OF ASSORTED DOLL SMALLS, & accessories**

**285 19 1/2" LONG X 10" WIDE GERMAN STORE room box with contents**

**286 6 1/2" GOOGLY, BLUE GLASS EYES, brown mohair wig, compo body, knit outfit with mohair bear, under dome (dome glued on)**

**287 7" KESTNER 143 CHARACTER CHILD, brown glass sleep eyes, OM, blonde mohair wig, BJCB, blue dress**

**288 LOT OF 9 ASSORTED DOLL HOUSE DOLLS 4 1/2" – 7" tall, including an early wax doll**

There will be no inspections of Dolls/Lots after the auction begins

Withington Auction, Inc.

38

Dolls at Auction - June 16, 2022

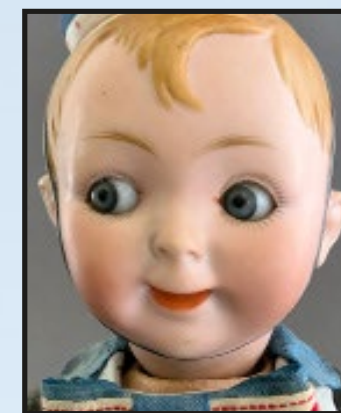
There will be no Inspections of dolls / lots after the auction begins

Withington Auction, Inc. - June 16, 2022

- 289 2 – DOLLS, 1 – 9 ½” BLACK HAIR PINK TINT CHINA**, painted features, cloth body, & 9” parian, painted features, cloth body, painted boots
- 290 12” DEP ELITE MAX HANDWERCK GOOGLY BELLHOP** with molded blue hat, bellhop uniform (dusty), compo body (head should be restrung)
- 291 10 – PIECES OF ANTIQUE WOOD FRETWORK DOLL FURNITURE**, bed, dresser, nightstand, 4 – chairs, table, bench, & wardrobe (12”tall)
- 292 13 – ASSORTED SMALL DOLLS**, bisque, china, & parian, 4” – 6” tall, various outfits
- 293 14 ½” ANGLED DISPLAY BOX WITH 2 DOLL HOUSE DOLLS**, woman in fretwork bed, man, table with basin & pitcher, & Oriental rug
- 294 10” A ELLER M ASIAN CHILD DOLL**, brown/blue glass sleep eyes. CM, compo body (toe damage), 2 – outfits
- 295 3 – DOLL HOUSE DOLLS, 2 – 7” men**, painted features, cloth bodies, bisque arms, & 1 – 6” woman all bisque 128-2, no clothes, painted yellow high stockings (left hand finger chip)
- 296 LOT OF 15 SMALL ASSORTED STEIFF animals**, 2” – 6”
- 297 LOT OF 16 SMALL ASSORTED STEIFF animals**, 2” – 13”
- 298 16” LONG WOOD STRAP LIFT TOP DOLL TRUNK** with antique doll clothes
- 299 LOT OF ASSORTED ANTIQUE doll clothes**
- 300 33” LONG X 16” WIDE GERMAN KITCHEN room box** with many accessories
- 301 LOT OF ASSORTED DOLL HOUSE & DOLL MINIATURE items**, carriages, doll house, dolls, etc.
- 302 10 ½” JDK 237 HILDA CHARACTER BABY**, blue glass sleep eyes, OM with teeth, blonde mohair wig, baby compo body (left index finger repair), white dress
- 303 5 – BABY DOLLS, 1 – 5” AM 351 BLACK DOLL**, 1- 6” Heubach, painted features, 1 – AM
- 352,, 1 – 7” G S PUTNAM**, & 1 – 4” All bisque
- 304 LOT OF 16 ASSORTED SMALL STEIFF animals**, 2” – 14”



289



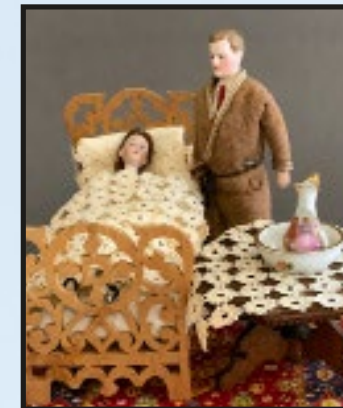
290



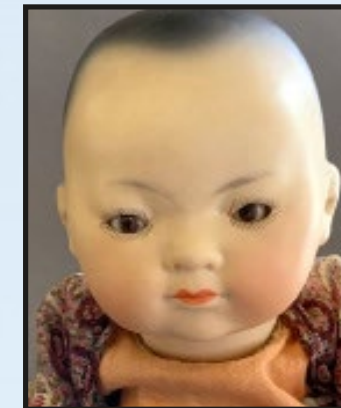
291



292



293



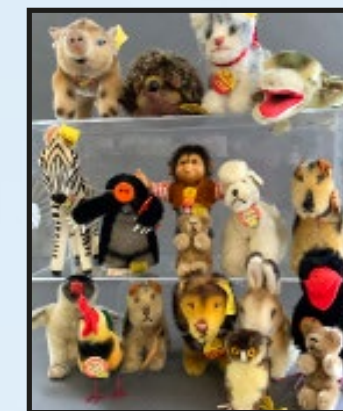
294



295



296



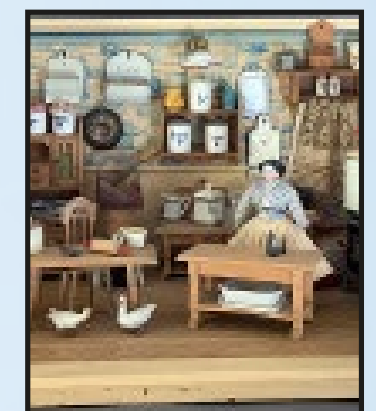
297



298



299



300



301



302



303



304



305



306



307



308



309



310



311



312.01



312



313



314



315



316



317



318



319

- 305 2 – SMALL GOEBEL DOLLS**, 1 – 7” bisque head with side flowers, painted features, compo body, painted shoes & socks, floral dress, & 1 – 6 ½” Googly with blue ribbon, compo body, yellow dress
- 306 LOT OF BLUE PAINT DECORATED DOLL HOUSE** furniture & accessories
- 307 3 – DOLLS**, 2 – 4” **KEWPIES**, **BRIDE & GROOM**. Painted features, & 1- 4” Milliners model, jointed wood body, antique outfit
- 308 LOT OF 2**, 1 – 9” **LENCI FELT GIRL DOLL**, painted features, side glancing eyes, felt dress with Lenci tag, & 1 – 8 ½” English Old Cottage doll holding a doll, felt bodies, painted features, red check dress, 1 red slipper
- 309 LOT OF 3 DOLLS**, 8” **S&H 1079 CHILD DOLL**, blue glass sleep eyes, OM, brown mohair wig, compo flapper body, beige/orange dress, 1 – 6” 192, brown glass sleep eyes, CM, blonde mohair wig, straight wrist compo body, green dress, (hairline in forehead, broken right foot), & 1 – 11” bisque Indian, brown glass eyes, OM, black mohair wig, compo body, no clothes
- 310 2 – PIECES OF BIEDERMEIER STYLE FURNITURE**, 1 – 7” fall front 4 drawer bureau with black paint decorated designs, & 7 ¾” 4 post bed
- 311 26” LONG X 14” DEEP X 14” TALL GERMAN STORE** room box, rear cabinets have open shelves wit 12 drawers with porcelain labels in German, contains furniture, fixtures, & stock, loaded with items
- 312 16 ½” CLOTH IZANNAH WALKER**, Central Falls RI mid 1800’s, stockinett pressed head with oil cloth painted features, painted hair curls, stitched hands & toes, antique floral dress, (wear & cracking to face & legs, nose rub & ear wear,
- 312.01 22” LONG LARGE H. P. HOOD** Wooden MILK WAGON with Horse on wheeled Platform, with 2 wood milk crates with 12 wood milk bottles in each crate, Hood’s Grade A Milk sign on top of wagon, horse platform missing 1 wheel
- 313 15” GERMAN FASHION DOME SHOULDER HEAD**, blue glass eyes, CM, PE, brown mohair wig, kid body, green/black dress
- 314 13” POUTY KESTNER 8**. brown glass sleep eyes, CM, brown mohair wig, straight wrist compo body, blonde mohair wig, white outfit
- 315 17” MIMI MARCHANT BRU ARTIST DOLL**, blue glass eyes, CM, PE, kid body with bisque arms, blue dress
- 316 17 ½” GERMAN FASHION DOME SHOULDER HEAD**, blue glass eyes, CM, PE, brown mohair wig, cloth body with bisque arms, brown/white dress
- 317 17” GERMAN WAX DOLL**, blue glass sleep eyes, CM, blonde mohair wig, cloth body, painted boots, antique silk green dress (melting), some facial cracks
- 318 14” MIMI MARCHANT BRU ARTIST DOLL**, blue glass eyes, CM, PE, compo body, knit outfit
- 319 16” KESTNER H TURNED SHOULDER HEAD**, brown glass eyes, CM, blonde mohair wig,

There will be no inspections of Dolls/Lots after the auction begins

Withington Auction, Inc.

42

Dolls at Auction - June 16, 2022

There will be no Inspections of dolls / lots after the auction begins

Withington Auction, Inc. - June 16, 2022

**320 20" FRENCH FASHION 6.,** blue glass paperweight eyes, CM, PE, braided blonde mohair wig, kid body, antique red silk walking suit (melting)

**321 14" HEUBACH COQUETTE GIRL,** painted features, molde blonde hair with blue ribbon, kid body with bisque arms, white knit outfit

**322 15" BISQUE HEAD MAROTTE,** blue glass eyes, OM with teeth, blonde mohair wig, antique outfit, twirl the long handle stick to make noise

**323 20" PAPER MACHE GREINER WITH LABEL,** painted features, sculpted black hair, cloth body with kid arms, blue floral dress

**324 13" SIMON HALBIG 1079,** brown glass sleep eyes, OM with teeth, blonde mohair wig, BJCB, pink outfit

**325 13" BELTON TYPE, BROWN GLASS EYES,** CM, PE, red mohair wig, straight wrist compo body, pink dress

**326 23" FRENCH E11D,** blue glass paperweight eyes, CM, PE (nick), blonde mohair wig, compo body, white dress (stain)

**327 18" KESTNER SHOULDER HEAD,** blue glass sleep eyes, OM with teeth, blonde mohair wig, kid body with bisque arms, blue stripe dress

**328 18" KESTNER 13, BROWN GLASS SLEEP EYES,** CM, brown mohair wig, BJCB, red/beige dress

**329 20" BELTON TYPE, BROWN GLASS EYES,** CM, PE (nick), red mohair wig, straight wrist compo body, brown dress

**330 32" CENTER PART BLACK HAIR CHINA,** painted features, cloth body with kid arms (splits), antique white floral dress

**331 7 1/2" BISQUE, BLUE GLASS EYES,** CM, brown mohair wig, straight wrist compo body, yellow dress, with trunk & extra clothes

**332 23" CHASE, PAINTED FEATURES,** cloth body, applied ears, blue sailor outfit

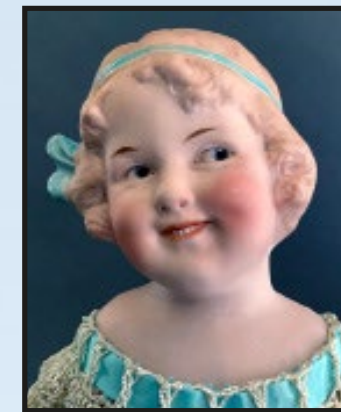
**333 25" BLACK HAIR COVERED WAGON CHINA,** painted features, cloth body with leather hands, muff, & floral dress

**334 21 1/2" ENGLISH WAX SHOULDER HEAD DOLL,** brown glass eyes, CM, brown mohair wig, cloth body with wax limbs, white dress

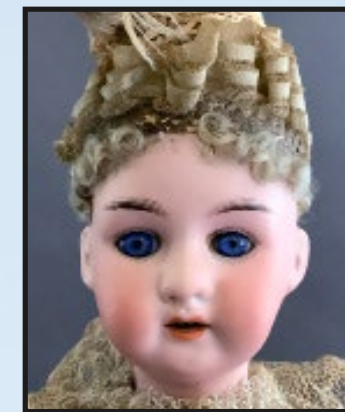
**335 20" PAPER MACHE, PAINTED FEATURES (repaint),** cloth body with leather arms, very nice antique outfit



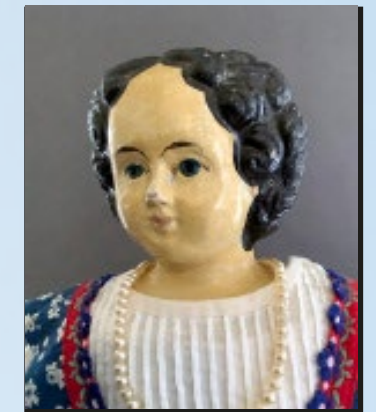
320



321



322



323



324



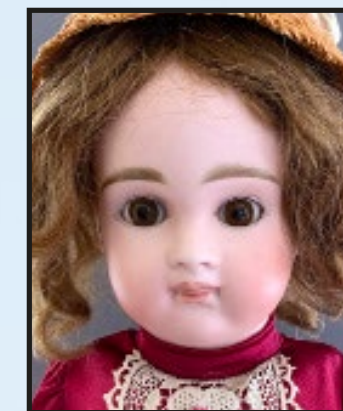
325



326



327



328



329



330



331



332



333



334



335



336



337



338



339



340



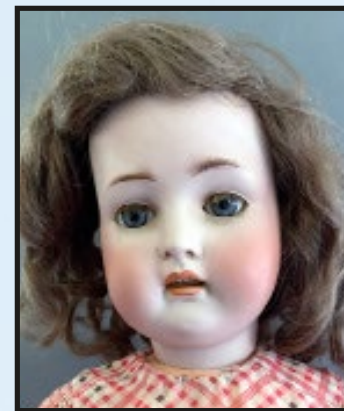
341



342



343



344



345



346



347



348



349



350



351

**336 22 ½" BISQUE SHOULDER HEAD BELTON TYPE**, blue glass eyes, CM, blonde mohair wig, kid body with bisque arms, beige dress

**337 23" BISQUE C M BERGMAN 1916**, brown glass sleep eyes, OM with teeth, blonde mohair wig, BJCB, white dress

**338 25" BISQUE S&H 1250**, Brown glass eyes, OM with teeth, PE, Blonde mohair wig, kid body with bisque arms (arms are loose), white dress

**339 29" BISQUE ABG 1362 SWEET NELL**, brown glass sleep eyes, open mouth with teeth, PE, blonde mohair wig, BJCB, turquoise/white dress

**340 27" BISQUE KLEY & HAHN 250 WALKURE**, blue glass sleep eyes, OM with teeth, blonde mohair wig, BJCB, white dress

**341 LOT OF 3 – 13 ½" LENCI BOY FELT DOLL**. Painted features, green suit, 1 – 9 ½" Lenci type, painted features, & 1 – 6" Lenci type felt doll, painted features

**342 15" BISQUE JDK 211 TODDLER**, blue glass sleep eyes, OM with teeth, blonde mohair wig, compo body (fingers repairs), brown outfit

**343 LOT -FRENCH FASHION DOLL ACCESSORIES**, gloves, handbags, corset, parasols,

**344 23" BISQUE 136, BLUE GLASS SLEEP EYES**, OM with teeth, PE, brown mohair wig, BJCB, red dress

**345 16" MIMI MARCHANT BRU ARTIST DOLL**, blue glass eyes, CM, PE, kid body with bisque arms, red dress

**346 33" BISQUE UNIS FRANCE 301**, brown glass eyes, auburn mohair wig, OM with teeth, PE (nick), BJCB, floral dress

**347 29" BISQUE S&H 1079 DEP**, brown glass eyes, OM with teeth, PE, blonde mohair wig, BJCB, white dress

**348 33" A16M, BLUE GLASS SLEEP EYES**, OM with teeth, Brown mohair wig, BJCB, whited dress

**349 2 – LENCI DOLL IN ORIGINAL BOXES**, 1 – 19" Boy felt doll, painted features, brown overcoat, & 20" Girl felt doll, painted features, green dress

**350 23" BISQUE C M BERGMAN SIMON HALBIG**, blue glass sleep eyes, OM with teeth, PE, blonde mohair wig, BJCB, white dress

**351 2 – BISQUE DOLLS, 24" AM 390**, brown glass sleep eyes, OM with teeth, blonde mohair wig, kid body, red dress, & 21" G&S 8 Germany, brown glass sleep eyes, OM with teeth, brown mohair wig, BJCB, yellow dress

There will be no Inspections of dolls / lots after the auction begins

*Withington Auction, Inc. - June 16, 2022*

There will be no inspections of Dolls/Lots after the auction begins

*Withington Auction, Inc.*

46

*Dolls at Auction - June 16, 2022*

- 352 2 - BOX LOTS OF DOLL ACCESSORIES & SMALLS**, animals, wig, hats, parasol. Etc.
- 353 LOT OF 10" LONG LIFT TOP TRUNK** with doll shoes & 5 pair of shoes etc.
- 354 LOT OF 7 BISQUE & CHINA HEAD DOLL HOUSE DOLLS** 4" – 6" tall, including 1 peg wooden doll
- 355 14" TALL BLISS TWO STORY LITHO DOLL HOUSE** with miniature furniture & accessories
- 356 LOT OF ASSORTED DOLL MINIATURES & ACCESSORIES**, china, furniture, lighting, phonograph, etc., including a Carl Horn doll
- 357 LOT OF ASSORTED DOLL MINIATURES & ACCESSORIES**, china, mirrors, lighting, sewing machine, etc.
- 358 LOT OF 15 PIECES OF MINIATURE DOLL HOUSE FURNITURE**, chairs, bed, couch, clocks, bureau, 1 – 3 ½" all bisque doll, some of the furniture is Biedermeier
- 359 BLISS VICTORIAN LITHO STYLE DOLL HOUSE, 24" TALL**, 14 ½" wide x 11" deep, 2 ½ story, whole front opens, turret & ornate carving, (1/2" hole cut in roof?)
- 360 6 – PIECES OF BLONDE BIEDERMEIER STYLE** doll house furniture, bed, bureau, 3 – chairs, commode, & accessories
- 361 LOT OF 3 SMALL BLISS TYPE DOLL HOUSES**, 1 – Litho 10" tall x 4 ½" wide, 2 room with misc. doll furniture, 1 – Litho 9" tall x 3 ½" wide, 2 room with doll furniture, & 1 – 4 ½" long paint decorated stable with cow
- 362 LOT OF 15 DOLL HOUSE MINIATURES**, lighting, birdcages, stands, etc., some Ormolu, some soft metal
- 363 LOT OF ASSORTED DOLL HOUSE SMALLS & MINIATURES**, mostly tin items, fireplaces, carriages, small iron utensils, etc.
- 364 28 – MINIATURE MOSTLY HORSE DRAWN CARRIAGES** hauling various products, 3" – 4" long many marked Germany, wood & a few metal
- 365 MINIATURE WOOD PAINT DECORATED COLONIAL VILLAGE**, church, meeting houses, homes, people, animals, etc., 1" – 3" tall
- 366 14 – ASSORTED DOLL HOUSE RUGS, BRAIDED**, Oriental, hooked, needlepoint, etc., 3 ½" – 11" long
- 367 LOT OF 3 FOLK ART ITEMS**, 1 – 6 ½" paint decorated Noah's Ark with miniature animals & people, 3" hand made toy with dog moving out of dog house, & 9" tall paint decorated privy with toilet



352



353



354



355



356



357



358



359



360



361



362



363



364



365



366



367

There will be no Inspections of dolls / lots after the auction begins

*Withington Auction, Inc. - June 16, 2022*

There will be no inspections of Dolls/Lots after the auction begins

*Withington Auction, Inc.*

*Dolls at Auction - June 16, 2022*



368



369



370



371



372



373



374



375



376



377



378



379



380



381



382



383

**368 2 – ITEMS, 1 – 12” BLISS TYPE LITHO** front two room house, blue paint with 2 chimney's, & 1 – 9” long German style room box with miniature furniture

**369 LOT OF 14 PCS. OF MINIATURE DOLL HOUSE FURNITURE**, some Biedermeier, chairs, tables, cupboards, etc.

**370 26” LONG X 28” TALL X 14” BLISS TYPE LITHO 2 STORY - 4 room doll house**, with some miniature furniture

**371 LOT OF 4 – 1 - 6 ¼” LONG PAINTED WOOD MOVIE THEATER** by C M Evans Reading PA, (left back corner roof chip), 1 – 8 ½” tall doll house litho & wood, 1 – 9” long American Grocery store & contents, & 1 – slide top wood Williams Root Beer Extract display box labeled 2 sides

**372 BOX LOT OF ASSORTED DOLL** miniatures & smalls

**373 BOX LOT OF ASSORTED DOLL MINIATURES** & smalls

**374 BOX LOT OF ASST. DOLL HOUSE FURNITURE**, chairs, table, clock, hutch, etc.

**375 2 – BOX LOTS, 1 – ASSORTED DOLL HOUSE FURNITURE**, chairs, table, couch, etc., & 1 – vintage Christmas brush trees, 2” – 9 ½” tall, approx., 15

**376 11” LONG SCHOENHUT STYLE BUNGALOW DOLL HOUSE** with front porch, & a few pcs. of furniture, (some wear to left columns

**377 14 ½” DEPOSE TETE JUMEAU BTE S.G.D.G. 6**, blue glass eyes, CM, PE, blonde moair wig, Jumeau stamp compo body (right arm wear), (long hairline left forehead), white outfit

**378 2 – BISQUE DOLLS, 1 - 10 ½” BISQUE ERNST HEUBACH DEP**, brown glass eyes, OM with teeth, brown mohair wig, white dress, & 1- 17” AM 3600, blue glass sleep eyes, OM w/ teeth, blonde mohair wig, BJCB, red/white dress, (excess wig glue)

**379 15 ½” KESTNER 143**, BLUE GLASS SLEEP EYES, OM with teeth, blonde mohair wig, BJCB, white dress

**380 2 – BISQUE DOLLS, 1 – 17” HANDWERCK 109**, blue glass sleep eyes, OM with teeth, PE, brown mohair wig, BJCB, white dress, & 1 – 22” Simon & Halbig Handwerck, blue glass sleep eyes, OM with teeth, PE, HH wig, BJCB. White dress

**381 2 – BISQUE DOLLS, 1 – 18” SIMON & HALBIG HANDWERCK**, blue glass sleep eyes, Om with teeth, PE, blonde HH wig, BJCB, white dress, & 1 – 22” AM 390, blue glass sleep eyes, OM with teeth, brown HH wig, BJCB, white dress

**382 2 – BISQUE DOLLS, 1 – 24” WALKURE**, brown glass sleep eyes, OM teeth, black synthetic wig, PE, BJCB, white/green dress, & 1 – 21” AM Floradora, blue glass sleep eyes, OM, teeth, blonde mohair wig, BJCB (missing 3 fingers), white/pink dress

**383 2 – BISQUE DOLLS, 1 – 26” SIMON HALBIG Handwerck**, blue glass eyes, OM teeth, PE, blonde mohair wig, BJCB, white dress, & 1 – 24” Simon Halbig handwerck, blue glass sleep eyes, PE, OM with teeth, blonde mohair wig, BJCB, white dress

There will be no Inspections of dolls / lots after the auction begins

*Withington Auction, Inc. - June 16, 2022*

There will be no inspections of Dolls/Lots after the auction begins

*Withington Auction, Inc.*

50

*Dolls at Auction - June 16, 2022*

- 384 2 – BISQUE DOLLS, 1 – 19” HANDWERCK 119**, brown glass sleep eyes, OM with teeth, PE, red HH wig, BJCB, white dress, & 1 – 23” Handwerck 69, blue glass sleep eyes, OM with teeth, Auburn HH wig, BJCB, white dress
- 385 2 – BISQUE DOLLS, 1 – 24” HANDWERCK 69**, brown glass sleep eyes, OM with teeth, PE, brown mohair wig, BJCB, off white dress (stains), 24” K&R Simon Halbig 62, blue glass flirty eyes, OM with teeth, PE, brown mohair wig, BJCB, white dress
- 386 2 – BISQUE DOLLS, 1- 18” K\*R SIMON HALBIG 122** baby, blue glass flirty eyes, OM with teeth, brown mohair wig, baby compo body, (hand touchups) white dress, & 1 – 14” AM 327 baby, brown glass eyes, OM with teeth, blonde mohair wig, baby compo body, white dress
- 387 35” BISQUE A17M**, brown glass sleep eyes, OM with teeth, brown mohair wig, BCJB (missing little finger left hand), white dress
- 388 LOT OF 8 – WHITE DOLL DRESSES & assorted child & doll shoes**
- 389 15” BLACK HAIR CENTER PART WIT BUN, PINK TINT**, painted features, cloth body with china limbs, antique brown dress (melting)
- 390 LOT OF 2 – 1 – 19” BLONDE HAIR PARIAN**, painted features, molded shoulder plate, cloth body with leather hands (as is), brown suit, & 1 – 16 ½” blond hair china, painted features, cloth body with leather hands (as is), red check dress (wear)
- 391 UNCUT CLOTH DOLL PATTERN “PICKANINNY”**, Arnold Print Works North Admas Mass October 4, 1892 (staining)
- 392 12” BISQUE SHOULDER HEAD**, brown glass eyes, CM, blonde mohair wig, kid body with bisque arms, white knit sweater, in cloth pouch
- 393 LOT OF 2 – 1 - 14” WAX**, brown pupiless eyes, CM, brown HH wig, cloth body, antique silk dress (melting), (facial cracking), & 1 – 13” wax over, blue glass eyes, CM, partial hair, cloth body, (1 leather arm, leg problems), early red wool dress
- 394 24” WAX OVER COMPO SHOULDER HEAD** (lines), brown pupiless eyes, sculpted blonde hair, kidoline body, wood limbs (broken foot), antique clothing
- 395 LOT OF 2 – 1 – 15” PAPER MACHE SHOULDER HEAD**, black pipe curls hair, painted features, cloth body, antique clothes, & 1 – 6” paper mache Motchman baby, brown pupiless eyes, taufling body, white gown (stains)
- 396 LOT OF 9 – SMALL DOLLS & ACCESSORIES**, 4 – Carl Horn dolls, 3 – 2” dolls, 1 – pocket watch case with 2 baby dolls, 1 – tiny pewter tool box with tools
- 397 5 – 6 ½” DOLL HOUSE DOLLS**, 1 – man & woman shoulder head no clothes, 1 – blonde hair parian, 2 – dome head bisque, & 2 small all bisque dolls
- 398 LOT OF 3 – 8 ½” BISQUE CHARACTER HEAD, “UNCLE SAM?”**, blue glass eyes, blonde mohair wig, BJCB, no clothes, 7 ½” parian, blond hair with black band, painted features, leather body, brown floral dress, & 9 ½” bisque shoulder head 411, blue glass eyes, CM, cloth body with bisque arms, painted shoes, no clothes
- 399 LOT OF 11 BISQUE/PARIAN DOLL HOUSE DOLLS**, 4” – 6 ¾” tall, 4 undressed



384



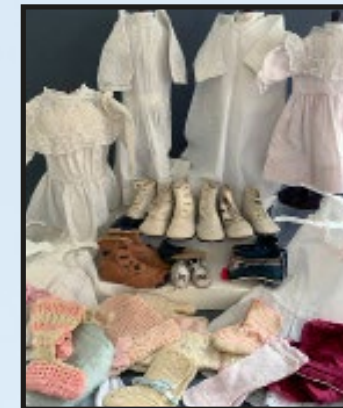
385



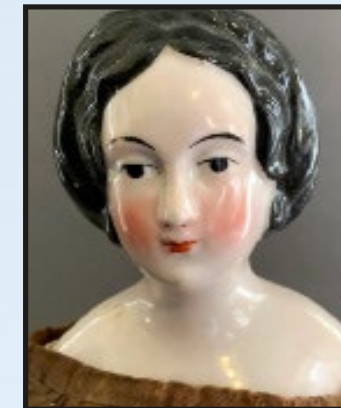
386



387



388



389



390



391



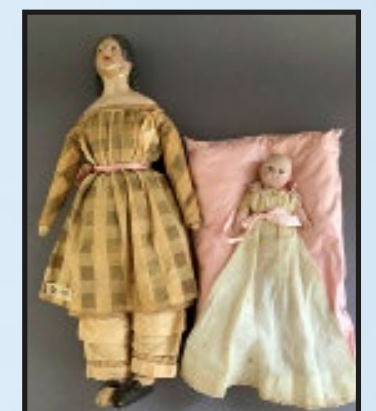
392



393



394



395



396



397



398



399



400



401



402



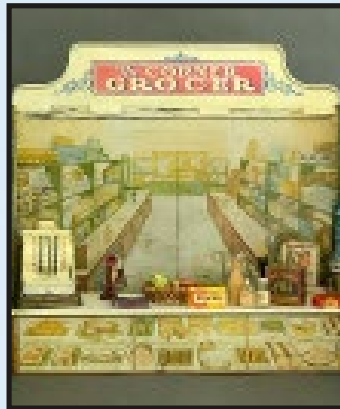
403



404



405



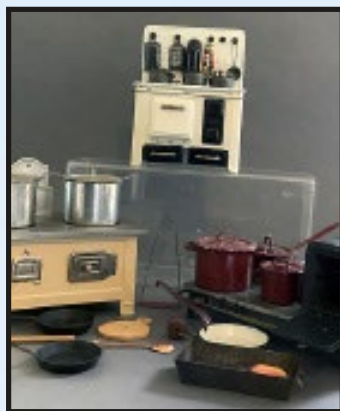
406



407



408



409



410



411



412



413



414



415

**400 21" LONG X 13 1/2" DEEP KITCHEN** room box with contents

**401 LOT- 12 PIECES OF MINIATURE DOLL HOUSE** furniture, chairs, tables, beds, etc.

**402 LOT OF MINIATURE DOLL HOUSE FURNITURE & accessories**

**403 BOX LOT OF MINIATURE DOLL HOUSE accessories**

**404 COUNTRY STORE DISPLAY CASE**, 20" long, 15 1/2" tall, x 9" deep, single drawer, glass front, walnut with ivory pulls

**405 BOX LOT OF STEIFF TEDDY BEARS & ANIMALS**, 6" – 17", 4 – bears (1 Herman), 3 – Mecki, Micki, Little Mecki, & 1 – celluloid doll dressed as a bear

**406 "THE CORNER GROCER" PAINTED TIN STORE ROOM BOX**, 19" long x 8" deep x 15 1/2" tall, with miniature store items

**407 2 – SCHUCO MINIATURE MONKEYS WITH MOVEABLE LIMBS**, felt pad limbs, 1 – 3 1/2" green compact, remove head chest opens, & 2" purple/blue monkey

**408 3 – TIN MINIATURE BATHROOM SETS WITH TUBS**, sinks, & basins, 13", 10" & 8" long

**409 3 – TIN MINIATURE STOVES** with cooking accessories, 9", 7" & 5 1/2" long

**410 WHITE PAINT GLASS SIDE STERILIZER** case with miniature bathroom fixtures 13" Long x 12 1/2" x 9 1/2", along 25 pieces of metal doll house furniture, some Tiny Toy

**411 ORIENTAL DOLL LOT OF 5**, 1 – 6" **DOCTOR'S** doll on wood stand, 3 – 4" – 5 1/2" Royal family dolls in traditional dress, & 6 1/2" Goshu Ningyo chubby baby (head crazing)

**412 BOX LOT OF 15 PIECES OF MINIATURE** doll house furniture. chairs, chests, mirrors, etc.

**413 23 1/2" LONG X 13 3/4" DEEP X 36" TALL ELABORATE FRETWORK BUILDING**, gothic style, stained wood, (missing 2 round final tops), on platform base

**414 32 1/2" LONG X 15 1/2" DEEP GERMAN ROOM BOX** kitchen with miniature contents, blue check floor, built in corner cupboards

**415 LOT OF 10 STEIFF ANIMALS**, 7" – 10" with tags & buttons

**\*\*\* The End of the Picture Dolls \*\*\***

There will be no Inspections of dolls / lots after the auction begins

*Withington Auction, Inc. - June 16, 2022*

55

There will be no inspections of Dolls/Lots after the auction begins

*Withington Auction, Inc.*

54

*Dolls at Auction - June 16, 2022*

# \*\*\*NOTES\*\*\*

## \*\*\*Non-Pictured Dolls\*\*\*

- 416 24" GERMAN BISQUE, BLUE GLASS SLEEP EYES. OM with teeth, blonde mohair wig, BJCB, white dress, (needs stringing)
- 417 23" K\*R 126 CHARACTER BABY, blue glass sleep eyes, OM with teeth, blonde mohair wig, compo baby body (hand & arm repairs), white dress
- 418 LOT OF 3 DOLLS, 1 – 11" PAPER MACHE, painted features (re-paint), cloth body leather arms, antique dress, 11" stockinet head, (wear), stitched features, cloth & leather body, wool suit, & 1 – 12 ½" paper mache head, felt body child
- 419 11" NOBBIE KID GOOGLY, COMPO HEAD, cloth body, blonde mohair wig, (paint touchups)
- 420 LOT OF 4 – BLACK BABY DOLLS, 8" – 14", 1 – AM 341 bisque, composition body, 2 – 8" compos, & 1 – 14" bisque head (as is), all dressed in white
- 421 LOT OF 3 – BABY DOLLS, 12 – 14", 1 – AM 351 bisque, compo body, 1 – compo head, 1 – Horseman bisque head, cloth body
- 422 JOEL ELLIS CARRIAGE WITH WOOD WHEELS & FRINGE canopy top, paint & stencil decorated (break & repair to 1 wood wheel)
- 423 18" LONG DOME TOP STRAP DOLL TRUNK with misc. doll clothes & shoes
- 424 28" ANNETTE HIMSTEDT ARTIST DOLL, barefoot girl in blue dress
- 425 18" MODERN KATHE KRUSE, PAINTED FEATURES, blonde wig, green dress
- 426 18" BLONDE HAIR CHINA, painted features, kid body with bisque arms, antique faded red outfit
- 427 2 – BLACK HAIR LOW BROW CHINA DOLLS, painted features, cloth bodies, 15" & 19" tall
- 428 OPPORTUNITY BOX LOT OF 11 COMPO, bisque, & plastic dolls, 5" – 7 ½" tall
- 429 LOT OF 4 CHINA HALF DOLL BRUSHES, 7" tall
- 430 LOT OF 2 – FLAT TOP DOLL TRUNKS 14" & 17" long
- 431 3 – HARD PLASTIC DOLLS 14" – 19" tall
- 432 3 – HARD PLASTIC DOLLS, 14" – 17" tall, 1 is a walker
- 433 3 – HARD PLASTIC DOLLS, 15 – 21" tall
- 434 3 – BISQUE SHOULDER HEAD DOLLS, 18" Heubach, kidoline body, 13" kidoline body, & 21" blonde hair
- 435 LOT OF 2 – HARD PLASTIC DOLLS, 14" skater, & 13" (body crazing)

- 436 LOT OF 2 – COMPOSITION DOLLS, 10” & 14” tall**
- 437 LOT OF 2 – 1 – 15” COMPOSITION DOLL, & 1 - 14” hard plastic**
- 438 LOT OF 2 – 1 – 17” COMPOSITION DOLL, & 1 – 17” hard plastic roller skater**
- 439 LOT OF 4 – 3 - NORAH WELLINGS DOLLS 8” – 12”, 1 – cloth Topsy/Turvey**
- 440 LOT OF 3 BISQUE DOLLS, 1 – 10” 971 BABY**, brown glass sleep eyes, OM with teeth, blonde mohair wig, compo body, pink outfit, 1 – 9” painted features, OM with teeth, compo body, knit outfit, & 1 – 13” AM 971, blue glass sleep eyes, OM with teeth, brown mohair wig, compo body, pink outfit
- 441 19 ½” BLACK HAIR CHINA, CENTER PART**, painted features, cloth body with China arms, brown dress
- 442 LOT OF 2 BISQUE DOLLS, 1 – 13 ½”** shoulder head, blue glass eyes, OM with teeth, blonde mohair wig, cloth body with bisque arms, black check outfit, & 1 – 20” AM 390, blue glass eyes, OM with teeth, brown mohair wig, BJCB, tan dress
- 443 2 – BISQUE DOLLS, 1 – 24” MAX HANDWERCK**, blue glass sleep eyes, OM with teeth, blonde mohair wig, BJCB, white dress, & 1 – 22” shoulder head, brown glass eyes, OM with teeth, kid body, green dress
- 444 OPPORTUNITY BOX LOT, 4 – PALMER COX CLOTH BROWNIES**, small black hair China, African doll 12’ tall, etc.
- 445 4 – CLOTH DOLLS, 13” RAVCA SANTA**, 1 – 17” Lenci, 14” Lenci type, & 1 – 14” Ravca type
- 446 LOT OF UNCUT CLOTH & paper dolls**
- 447 LOT-TOY UTENSILS, CRUETS, GRANITE WARE**, glass candlesticks, China, etc.
- 448 19 PIECES OF CHILD’S BLUE & WHITE & BLACK & WHITE** early transfer ware (as is)
- 449 2 – BISQUE DOLLS, 1 – 13”** brown glass sleep eyes, OM with teeth, brown mohair wig, BJCB, red dress, & 1 – 25” shoulder head 11Kestner, blue glass sleep eyes, OM w/ teeth, blonde mohair wig, cloth body with bisque hands, white dress
- 450 OPPORTUNITY BOX LOT, MASON & TAYLOR DOLL**, wood artist doll, mohair bear, bisque head doll, Framed litho “Our Boarding House” 12 ½” x 12 ½” Trade card,
- 451 LOT OF MINIATURE ANIMALS**, people, carts, furniture, etc., & 14 ½” tall fret-work church
- 452 LOT OF 6 PORCELAIN FIGURINES, 5” – 10”** tall, probably German
- 453 13 – PORCELAIN MINIATURE SUFFOLK COTTAGES** about 2 ¾” tall
- 454 2 – 13” SANTON TYPE WOMAN**, molded clay heads & hands on wire armature bodies, lead shoes, ethnic dress
- 455 LOT OF MINIATURE DOLL HOUSE FURNITURE**, China, & accessories

There will be no Inspections of dolls / lots after the auction begins

*Withington Auction, Inc. - June 16, 2022*

- 456 2 – LOTS OF MISC. DOLL RELATED ITEMS INCLUDING DOLLS & small houses** made of clay from Peru.
- 457 LOT OF 3 – 3” TALL CAST IRON TOY HOUSE BANK**, 23” long red paint metal wheel cart, & paint decorated folk art balancing toy
- 458 BOX LOT OF FABRIC, FUR**, lace for doll dress making
- 459 3 – BISQUE HEAD ARTIST DOLLS BY DG, AM GOOGLY 9”**, 9” Googly, & 10” Googly JDK 221
- 460 3 – BISQUE HEAD ARTIST DOLLS BY DTMG, 16” JESTER** painted face, clothed, 12” Nicole by Diane Effner, & 8” Marotte
- 461 3 – BISQUE HEAD ARTIST DOLLS BY DG, 10” EJ NO CLOTHES**, 13” Jumeau, & 10 EJ no clothes
- 462 2 – BISQUE HEAD DARK SKIN ARTIST DOLLS BY DG, 23” JUMEAU 1**, pink dress, & 27” Bru Jne 13, extra pink dress, suede body
- 463 LOT OF 3 REPRO. BISQUE HEAD DOLLS ON SEELEY BODIES** mked “DG”: 15” Dianne Effner (dressed), w/ 2-pt legs; 16” Jumeau glass eye, p/e; 11” JDK 221, “Ges. Gesch” wig
- 464 LOT OF 5 SMALLER SEELEY DOLL BODIES:** 2 - 7”, 8 ½”, 9”, 11” (no heads)
- 465 LOT OF 4 MED. SEELEY’S DOLL BODIES:** 10”, 11”, 12”, 13” (no heads)
- 466 LG. BIN OF DOLL RESTORATION SUPPLIES:** 2 lg. Seeley bodies, ribbons, hat making, feathers, doll-in-progress, antq. bisque-head baby (101), 20+ pcs of light fabrics, silks, cotton, etc., (20#) Plus tool case w/ China paints, blown glass doll eyes, etc...
- 467 BOX LOT OF VIRGIN MOHAIR WIG-MAKING MATERIALS**, skin wig, roving, etc. 10 +/- pcs., light colors
- 468 LOT OF 4 - 2 – BISQUE HEAD BABY DOLLS, 1 – 10”** Grace S Putnam, blue glass eyes, cloth body, long white christening dress,, & 1 – 7 ½” AM 341, baby compo body, white dress, 9” Steiff bear hand puppet, & 1 – 11” Bisque shoulder head, blue glass eyes, CM, kid body with bisque arms, white dress
- 469 2 – BISQUE CHARACTER BABY DOLLS, 1 – 7”** 5/0 intaglio eyes, bent limb compo body (right arm shoulder crack), white dress, & 6 ½” AM Googly, painted features, compo body, painted shoes
- 470 2 – HANDLED WICKER** doll carriages
- 471 LOT OF ASSORTED DOLL MINIATURES & accessories**
- 472 16” FLAT TOP STRAP TRUNK WITH ASSORTED** modern doll house dolls
- 473 LOT OF ASSORTED DOLL** clothes

There will be no Inspections of dolls / lots after the auction begins

*Withington Auction, Inc. - June 16, 2022*

- 474 LOT OF 5 – SMALL DOLLS**, 2 – black hair china dolls 7” & 10”, 2 – 6” cloth dolls, & 1 – 4 ½” peg wooden doll
- 475 LOT OF SMALL MOHAIR BEARS**, & other animals, mostly Boyd’s 20+
- 476 3 – ARTIST DOLLS, 1 – 7” ALL BISQUE**, CM, blue glass eyes, red/white outfit, 1 – 7” all bisque , CM, blue glass eyes, green dress, & 1 – 13” – porcelain, long blonde mohair wig, pink sweater
- 477 3 DOLLS, 1 – 16” POURED WAX SHOULDER HEAD**, blue glass eyes, synthetic wig, replaced body, antique outfit (head cracks), 1 – 9” all bisque coquette type, blue outfit, & 1 – 11” wax artist doll. Edna Daly, cloth body wax limbs, pale blue outfit
- 478 4 – DOLLS, 1 – 10” AM DREAM BABY**, 1 – 12” Scootles compo, repaint, 13” SPBH \* painted bisque head, compo body, & 1 – 7 ½” Vogue toddles, compo, head crazing
- 479 BOX LOT OF BARBIES & KENS** in original boxes
- 480 BOX LOT OF BARBIES & KENS** in original boxes
- 481 LOT OF 6 STEIFF ANIMALS**, 2 – 7” Mecki & Micki, 2 – 4” Macki & Mucki in original boxes, 13” Petsy bear tag only, 7” Vincenz man
- 482 LOT OF 2 – 1 - 15” BLONDE HAIR CHINA SHOULDER HEAD**, painted features, cloth body, china hands (replaced?), antique red/white dress, & 1 - 17 ½” Bisque shoulder head 7 with faint 118, brown glass sleep eyes, OM with teeth, brown synthetic wig, kid body with bisque arms, antique white/red trim outfit (melting)
- 483 2 LOTS - BOX LOT OF VINTAGE & ANTIQUE DOLL CLOTHES**, etc., & Box lot of vintage clothed, fabric, etc.
- 484 3 – LOTS OF WOOD DOLL HOUSE FURNITURE**, chairs, tables, stands, etc. 1 of the lots is walnut Strombecker Playthings furniture, ( all as is), & Box lot of assorted doll house furniture, beds, chairs, bureau, etc.
- 485 LARGE LOT OF PAINTED DOLL FURNITURE & FIXTURES** from a Tynie Toy Colonial Mansion Dollhouse (not Tynie Toy), a few broken pieces (green, pink & white)
- 486 LARGE LOT CHILDREN’S PLAY CHINA, 49 PCS.** of assorted children’s tea service in 3 styles, white ironstone, gold band & floral, & copper band made in Japan, along with a Jackson & Gosling tea pot, (some rough edges 1 hairline on covered gold band, 3- Partial sets of child’s play china, aprox. 48 pcs, 2 – tea sets, 1- Japan luster, creamers, sugars, cups saucers & plates, Japan hand painted set for 6 (1 damaged cup), 1 – German porcelain chocolate set for 6 (as found), & 60 +- Pieces of white china child’s tea sets, tea pots, serving pieces, cups & saucers, plates, some Christmas decorated, some gold band
- 487 ELABORATE VICTORIAN, BLACK SILK CAPE, OVER-ALL SEQUINS**, jet beads, chenille, boarder of fancy 5”lace ruffles, (collar torn, some melting & fading) & lot of 9 parasols in various sizes & condition

- 488 LOT OF 5 – “SCRIBBLES THE DOLL OF 1000 FACES”** in original box (missing 1 flap), “Gone with the wind doll 61061”Mammy” by World Doll in original box, framed 10 ½” x 16” “Butterfly McQueen” poster of “Prissy” in “Gone With the Wind” Nov 9, 1985 Dracut, MA, (frame needs work), & 16” Madame Alexander 1610 “Elise Swan Lake” doll in Blue box, & Russian wind up paint decorated chicken in original box (some damage)
- 489 BOX LOT OF CHRISTMAS ORNAMENTS**: 30+ blown glass various shapes, & an Amethyst, 6” glass Kugel (repro), etc.
- 490 LOT OF BLACK NOVELTIES, ETC.:** Hard Plastic (6)’s, Mammy & Pa, S & P, Kissing Blk boy & girl, naughty Potty smoking holder- Cigs, Matches & ashes, & misc. buckets, apples, access.
- 491 LOT OF VINTAGE CLOTHING** mostly whites, etc.
- 492 LOT OF MINIATURE DOLL HOUSE STOVES**, metal, tin, porcelain, etc.
- 493 BOX LOT ON MINIATURE METAL DOLL HOUSE** furniture & doll house smalls
- 494 11 ½” LONG SMALL KITCHEN ROOM BOX WITH** metal appliances, doll house doll, etc.
- 495 TRAY LOT OF 11 ASST. DOLLS 3” – 6” TALL**, bisque, china, plastic, (as is)
- 496 CHRISTMAS LOT WITH SANTAS, AND SMALL ASSORTED** Christmas trees
- 497 OPPORTUNITY BOX LOT OF ASSORTED DOLL MINIATURE** items & smalls
- 498 OPPORTUNITY BOX LOT OF ASSORTED DOLL MINIATURE** items & smalls
- 499 2 – TRAYS - OPPORTUNITY BOX LOTS OF ASST. DOLL** miniature items
- 500 LOT OF DAGUERREOTYPE FRAMES**, old pictures, other small frames, etc.

**\*\*\* The End of the Auction \*\*\***

All of us at Withington’s would like to express our sincere thanks to all of you for sharing in the celebration of Cheryl Barkhouse’s life with the dolls. -As past president of the Doll Study Club of Boston (UFDC Region 15) and a valued member of Withington’s Doll Auction family, her enthusiasm for the dolls and sense of humor will live on in our memories - she will be missed.

For upcoming Auction Schedule & Auction News...

follow us on facebook or visit our WEB-site: [www.withingtonauktion.com](http://www.withingtonauktion.com)

**Our year-end Block-Buster - Izannah, Steiner, Jumeau, Schmitt, Kamkins, & MORE & one of the Finest Collections of Rare Dolls, Toys & All Things Schoenhut!!**

