

# WITHINGTON AUCTION, Inc.

*Dolls at Auction - October 20, 2022*

## *The Carol Corson Doll Collection*



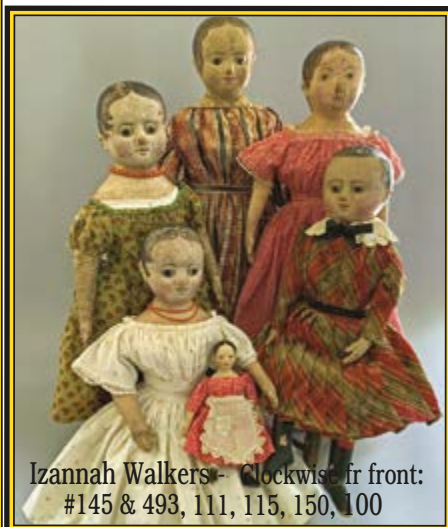




### Lot 100 - 15" Izannah Walker Boy "John Thayer"

Cloth doll, Central Falls, RI, 19th century, pressed mold stockinet head, painted features, wispy parted hair, painted black boots with red socks, brown cloth body, stitched fingers, antique wool red plaid dress with white collar & black ribbon bow, (facial crazing & cracks, nose rub, wear spots to hair, some small tears to dress), very rare as a boy, with display items from Carol's bedroom, 17" red stenciled period child's wagon seat, 2 - 2" round stenciled tin items, small cloth dog & elephant, small tin wagon, small whip, small crazy quilt, & small tin train. Notes from Carol "15" boy, named John Thayer after his last of three generations of his original family. He is in his sewn on original dress with matching trousers. his side-parted hair is brushed to the right. He has high painted

black boots with red shields at the top and gray painted soles. Walker dolls have down tilted feet and even the ones in super original condition have worn toes which may be caused by being carried by one arm with its toes dragging on the floor. John Thayer, named after the last of three generations of the same family who were the original owners, John Thayer of Chester County, PA. He was originally John's grandmother's doll. Painting is at the Abby Aldrich Rockefeller Museum at Historic Williamsburg dated 1848.



### AMERICAN CLOTH DOLLS... "Three-Dimensional Folk Art Paintings"...

It was Carol Corson who coined the phrase in an article she wrote on the iconic dolls of Izannah Walker, for Antique Doll Collector Magazine back in 2010, A modern woman for her time, Izannah Walker was an entrepreneur, artist, inventor, and innovator in the small town of Central Falls, Rhode Island. Her circumstance left her a single woman, who had to fend for herself in the male dominated world of the mid 1800's. You may know that the Izannah Walker dolls are the earliest commercially produced American cloth dolls known. They were not produced in a factory but instead by cottage industry or probably more accurately by one person or a few family members in a single house. They were, however, made to be sold rather than just for the children in that family to love and hold. Cloth dolls were hugged, dragged around by children, and often loved to death by their small owners. This accounts for their rarity, as after many home repairs, they were deemed too tattered to repair any more.

The article titled An Izannah Walker Reunion, was written by Carol to celebrate the gathering of thirty-one Izannahs, from all over the country, at the 75th annual meeting of the Doll Collectors of America. What an opportunity to see the examples of the dolls of

every size and variation and to have a dynamic dialog among the owners and members of the DCA, and to see actual examples of the earliest, the smallest, the crudest, the unpainted --- beside each other again. Carol Corson owned five of the dolls present at the gathering (see above), among them a very rare boy, named John Thayer. For American Cloth Doll fans.... The Izannah Walker is a "Rock Star", The Five Izannah Walkers, along with their paint decorated trunks and clothing will be sold at this auction.

In the 12 years since the publication of the article, these dolls have increased in popularity.... And individual collectors and museums have an Izannah Walker on the top of their wish lists. For Withington Auction, our primary auction activities, today, have centered around selling collections of antique dolls. Rarely did we have more than one or two Izannahs in a season, the estimate is that somewhere around 3000 of these dolls were produced by Ms. Walker's Company from 1840 to 1870. Several years ago, the total number of dolls as yet discovered was around 300. If you are interested in more information on these remarkable dolls, go to [www.izannahwalkerchronicles.com](http://www.izannahwalkerchronicles.com), a blog that was created and by writer and doll artist Dixie Redmond from Maine, in an effort to catalog as many of the surviving dolls as possible.

Carol Corson was a descendant of the Plymouth Meeting, Pennsylvania Quakers, who's family played an integral roll in assisting the slaves to freedom on the underground railroad. Carol lived her ancestry throughout her life, she collected the best examples of colonial decorative arts, portraits, wooden toys and recognized the significant role that children and their play-things... "played" in everyday life. Those "three-dimensional Folk Art paintings" - American Cloth Dolls, seem to breathe life into an inanimate display, to become a living portrait of life in the past.

## WITHINGTON AUCTION, Inc.

### Dolls at Auction - October 20, 2022

#### Playing with Dolls Since 1959

#### AUCTION SALE # 2586

Thurs. Oct. 20, 2022 - A very FULL Day 500+ lots of Dolls & Toys!

Auction Starts - 10:00 am

Double Tree by Hilton - Nashua, NH

#### PREVIEWS

October 19 - Evening: 7 - 9pm

October 20 - Morning: 8 - 10am

#### DOLL SHOW

Octpber 19, 1 - 6 pm *or by Chance....OPEN TO THE PUBLIC!*

7th Floor Hotel Rooms - Doll Show & Sale Room Selling - *Space is limited*

Call for Reservations - The Double Tree 603-595-4102

*BUY \* SELL \* TRADE - Social Networking - Dolls Meet 'N Greet*

#### HOTEL INFO

New Location! Double Tree by Hilton, 2 Somerset Parkway, Nashua, NH

Exit 8 off Rt. 3 (*Ask for the Doll Rate*) ask for a room on the 7th Floor

#### WEB-SITE

Full Color Catalogue - \$15.

(View Cat on-line & 3,100+ Photos) - [www.withingtonauction.com](http://www.withingtonauction.com)

#### ABSENTEE & PHONE BIDS

Absentee & Telephone Bidding accepted - **NO INTERNET !**

Bidding forms available on our web-site [www.withingtonauction.com](http://www.withingtonauction.com)

Pre-register by Tuesday, Oct. 18 in order to telephone Bid (\$500. Minimum Bid)

**RETURNS:** All items MUST be inspected and returned within 10 minutes of purchase - if not as described in catalogue. and be of \$ 100.00 valuation or more to qualify for a refund. Due to the sufficient time allowed for inspecting the dolls, the following items are sold AS-IS: All Paper Dolls, Artist Dolls, Madame Alexander Dolls, Bodies are sold AS-IS. Speckling and wear are normal conditions for Bisque and China dolls - it is up to the buyer to inspect for these conditions.

**Items designated AS-IS are FINAL SALES.**

18% Buyer's Prelmium - Discounted to 15% for Cash or Check

Visa & Mastercard accepted - No NH Sales Tax

**Larry Leizure -**  
**Marcia Leizure -**  
**Barbara Scully -**  
**Mary Dominick -**  
**Melissa Anwar -**  
**Ali Leizure -**  
**Dick Withington**  
**Dolores Smith**  
**Bob Bouchard**

*President, Appraiser, Doll Specialist - Graphics - NHPA Member*  
*NH Auctioneer's Lic. #4028, Events, Trucker, Writer, Cook - bottle washer...*  
*Auctioneer II, DAA (Doll Addicts Anonymous)- Consultant - Card Shark @ VFW -*  
*Photography, Clerking, Organizer of many things...*  
*Administrative Assistant - Acquisitions - Facilities Manager*  
*Graphics Design - Dog Trainer - Gardener*  
**(RIP) 3/31/1918 - April 29, 2008 - NH Auctioneer's License #1**  
**(RIP) Doll Specialist, Master Chef, we lost our angel...**  
**(RIP) Grounds, Dolls, & about everything else! Miss you everyday.**

### WITHINGTON AUCTION, INC.

*Selling Dolls at Auction since 1959*

17 Atwood Road Hillsborough, NH 03244

E-mail: [withington@conknet.com](mailto:withington@conknet.com)

WEB: [www.withingtonauction.com](http://www.withingtonauction.com)

For Info: 603-478-3232 / FAX 603-478-3233

*Thinking about Selling your Doll Collection? Withington's can help..*

*Call or E-Mail photos and / or inventory for a free verbal appraisal.*





# \*\*\*GREETINGS from the Doll House\*\*\*

WITHINGTON AUCTION, Inc. - Hillsborough, NH - October 20, 2022

When Dick Withington started the auction company back in 1949, the American landscape was changing rapidly. The post-war housing boom, generated by Veterans resuming their lives, starting new families, and seeking furnishings for their new homes...the economy was booming. Dick's conservative "business plan" (probably written on the back of a napkin), estimated a net profit of \$3,000 for his first year as a seasonal auctioneer. He more than exceeded that goal and the race was on! He became the "Bob Hope of the auction world" ... "The Nation's Leading Doll Auctioneer" and was featured in the national publication of "TIME" magazine. Dick's Auction Map hangs in the Doll House, having hundreds of pin markers for the auctions he held all over New England... sometimes there were three sales a week! He was a Rockstar, and everyone wanted to Buy from Withingtons and to have him Sell their estate antiques. Some of you long time customers might remember Dick interrupting a sale with the pitch: "Don't forget, write my name in the margin of the will... you don't want just anyone to sell you precious antiques." That tradition continues today, and so often our referrals come from beyond... "Have Withington sell my dolls!"

In May, we were called by the executors of an estate in Pennsylvania. The niece and nephew said their aunt had recently passed away and they were in the process of cleaning out her assisted living apartment. She had an extensive doll collection... representing 50 years of her life with dolls... she was a teacher, a lecturer and author. During our conversation about the location, the type of Dolls in the collection, I felt a tug at my heartstrings, and realized that this collector was an old friend. Carol Corson. She attended almost every Withington Doll Auction, making the long journey to New Hampshire with her fellow Pennsylvania doll friends. She always sat on the far right of the ballroom and thoroughly enjoyed her three days away in Dolly Land. Carol never bought much, but usually would ferret out a couple of special dolls that others may have over-looked. I recalled that several years ago, Carol had been doing some estate planning and approached Withingtons about selling her doll collection. Though nothing was formalized, Carol had left instructions to have Withington sell my dolls. In so many instances, the dolls travel full circle... from estate, to auction, to a collection, and the estate is once again on the auction block.

A week later, we hopped in the van and traveled to Pennsylvania, anticipating a quality collection ...but when we saw the dolls firsthand, displayed in her lovely 2-bedroom apartment - we were literally awestruck! Perhaps at that moment understood why she never bought much... because she already had most everything significant in her collection! Withington has been selling antique dolls at auction since 1959, and over the years we have sold some remarkable collections (quantity & quality?). During our tenure at Withingtons we have handled some exceptional dolls...but from the perspective of *Quantity*... Carol's was one of the larger collections we've handled and had *Quality Throughout*! When judging dolls there are four points to consider: Scarcity, Rarity, Condition and Originality - Carol knew what to look for when acquiring her dolls and most of her favorites are still a part of her personal collection. Oh my! We suspected her dolls were good and they did not disappoint. After a period of failing health, she passed away quietly, in March. Until the phone call, we had not heard of her passing, and neither had her closest friends.

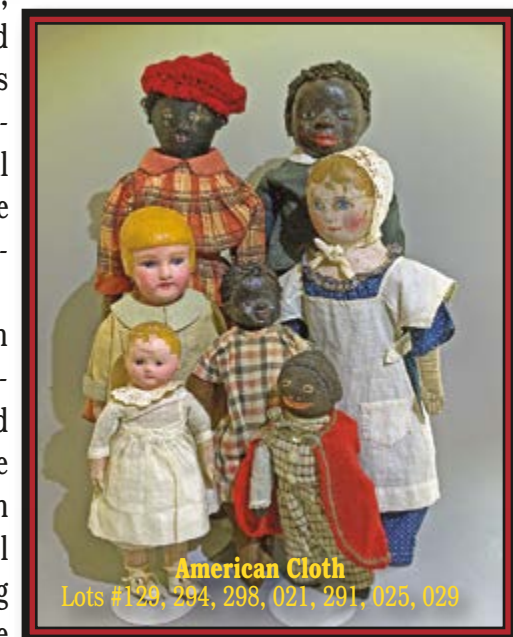


It was evident that Carol was well-known and a mentor to other kindred spirits. Withington, as new members of the Schoenhut Collectors club, received the summer issue of the quarterly club news... more than half of the publication bore testimonials of how Carol had generously shared her knowledge and expertise as a passionate collector of not only Schoenhut Dolls, but also the toys. There was a lot of information available about the Humpty-Dumpty and Darkest Africa animals, figures and other toys, however, I was told that Carol spent a decade researching and gathering information for her "bible" "Schoenhut Dolls, A Collectors' Encyclopedia" - finally, Carol published a scholarly book on the Doll division of the company, and it continues to be the guide today. Most of her best dolls were on display throughout the house, including dozens of the finest Characters of the Graziana series, but stowed away in closets and under beds were file boxes full of choice examples of the wooden toys, animals and figures produced by the company. With the limited space, many things were not displayed, so the "surprise boxes" have yielded many treasures to be included in the auction.

Carol's teaching skills served her passions well as a presenter of so many popular programs over the years at the Conventions and club meetings. Though known for her Schoenhuts, her interests included many other types of dolls, especially American Cloth Dolls. She had many Chase (including the rarest 9" example), she had Lancaster Rags (finally solving the mystery of who made the dolls), she had a dozen + Kamkins and wardrobes, a Philadelphia baby, Dewees Cochran's famous Gloria Ann, a Columbian, Greiners, Papier Mache, a cabinet full of Grodner Tal woodens of the smallest size. The corner cabinet in the living room was full of tiny all bisque; barefoot, jointed, Max & Moritz, Mignonettes, of every description. The French were well-represented, too, with shelves of Jumeau Portraits, wood-body Fashion, Bluettes, Schmitt... Motherau ... Van Rozen ... Oh My!

As we continue our journey through the history of doll collecting, in the 63 years of Withington Dolls...changes in fashion trends have reflected in the collecting tastes of the auction goers. As old collections are sold, German dolly-faced dolls are more plentiful and therefore *less desirable* - two or three today, sell for the price of one ten years ago. However, if you collected American Cloth Dolls back in the 1950's... especially the Izannah Walkers, they are the little darlings of the doll world today. The lowly Rag Dolls cheaply made for the common man, are now among the most desirable of the "CLASSIC American Dolls", Remarkably, Carol has Five Izannah's in her collection and her pride and joy is a rare Izannah Walker Boy, named John Thayer!

As with so many life-time collectors of, not only dolls but other things, the culling process had already occurred. She sold the big Victorian in Philly and moved to smaller quarters. Life would be simpler, being closer to her family and the Plymouth Meeting Quaker School that had played such a significant role in Carol's life. She attended the school (class of 1951), was a teacher for 20 years, on the board of directors, and was an active fund raiser throughout her life. Many years ago, the Corson family homestead, called Journey's End, was given to the Plymouth Meeting Quaker School, affording them more room for classrooms and expansion. In the Corson spirit, Carol, in her will, wanted the doll and toy collections be sold and the proceeds given to the school, as her final gift to help support the exceptional programs for future generations. Carol's mother always said, "It doesn't matter where you come from, it matters what you do with your life." Carol Corson has done a lot!



Sincerely, Marcia & Larry Leizure

October 20, 2022  
WITHINGTON AUCTION, Inc.  
17 Atwood Road - Hillsborough, NH 03244

Marcia Leizure - NH Lic. # 4028  
[withington@conknet.com](mailto:withington@conknet.com)

\* 603-478-3232 \*

Larry Leizure, President  
[www.withingtonauction.com](http://www.withingtonauction.com)



## Carol Corson Doll Collection - October 20, 2022

- 01 **33" PAPER MACHE S/H, PAINTED FEATURES**, black molded hair (rubs), label: Greiners Patent Heads March 30, 1858, Classic American Stamp doll, 1997, cloth body, leather arms, red wool outfit (moth holes), white blouse, black leather boots, (crazing & cracks to shoulder plate, facial rubs)
- 02 **33" PAPER MACHE "PATENT HEAD"**, painted features, black sculpted hair (rubs), cloth body w/ leather hands, antique white/black outfit, brown leather shoes, (crazing to face & shoulder plate)
- 03 **20" PAPER MACHE MOTSCHMANN-TYPE**, 2 rows of teeth, brown glass eyes, black human hair wig with long braid, cloth-jointed, Taufling, paper mache body, Oriental outfit, (crazing & crack to face), barefoot
- 04 **25" CHARACTER K\*R 114**, painted features w/ blue eyes, red mohair wig, jointed composition body (rubs), closed pouty mouth, red antique leather shoes, antique white dress w/ lace, antique gold doll bracelet with red accents, engraved with LMH. (left ear chip, wig pulls, fingers rubs & crazing)
- 05 **18 ½" PAPER MACHE SHOULDER HEAD** (cracks to back of plate), painted features, closed mouth, black glass eyes, molded painted center part black hair, brush strokes, (scratch in hair), cloth body with wood arms, antique clothing
- 06 **9" PAPER MACHE SHOULDER HEAD**, painted features, center part black hair, cloth body, leather arms, 1 shoe, antique green silk dress (melting), (nose rub, some paint loss to face)
- 07 **10 ½" PAPER MACHE ASIAN BOY**, painted features, cloth body & painted cloth arms, ethnic outfit with silk cap
- 08 **8" KESTNER CHARACTER, PTD. FEATURES**, blonde mohair wig, fully jointed compo body, red dress & shoes
- 09 **15" PAPER MACHE MOTSCHMANN-TYPE**, dark pupiless eyes, CM, remnants of painted wispy hair, wood body (wear), w/ cloth taufling joints on torso, blue/white antique outfit, (some small areas of facial paint touchups)
- 10 **2 - MOHAIR ANIMALS**, 10" Steiff blonde rabbit with button, moveable limbs, & 3 ½" blonde bear, no button
- 11 **13" KATHE KRUSE SCHLENKERCHEN**, molded cloth, pressed & painted oil features, smiling character toddler, cloth stockinet body, mitten hands, white/pink knit outfit
- 12 **2 - 4 ¾" ALL BISQUE DOLLS: PAINTED FEATURES**, 1 - Girl, CM, brown mohair wig, brown painted shoes, 1 - Boy, Parian, molded hat, blonde hair, gray painted boots, (German outfits)
- 13 **LOT OF 8: SCHOENHUT FELIX THE CAT FIGURES**, 2 - 8" tall, 6 - 4" tall, jointed limbs, black paint with white face & label, leather ears, (some rubs & loose joints)
- 14 **6 ½" ALL BISQUE "BONNIE BABE"**, blue glass sleep eyes, OM, molded blonde hair, blue painted shoes, white socks, blue/white pattern dress
- 15 **7 ½" ALL BISQUE INC. 2, BROWN GL. EYES, CM**, (old blonde mohair wig as-is), antique blue outfit (as is), high black stockings, brown/blue strap shoes, bent arms, in an 8" French presentation box with a few extra clothes, (small chip top of back)
- 16 **21" PAPER MACHE S/H, BLACK PAINTED SCULPTED**/ wispy hair, dark pupiless eyes, cloth body, leather hands, antique outfit (wear/fading), red leather shoes, (cracks to back of shoulder plate at base, nose rub)



001



002



003



004



005



006



007



008



009



010



011



012



013



014



015



016





017



018



019



020



021



022



023



024



025



026



027



028



029



030



031



032

**17 13" BLACK PAPER MACHE MOTSCHMANN-TYPE**, sculpted black hair, dark pupiless eyes, cloth Taufling & composition torso, paper mache/wood limbs, early elaborate red/white wool outfit (wear) 10 pieces, red leather booties

**18 17" WIDE HIP KATHE KRUSE**, early, painted features, molded muslin head, cloth body, (wear to hands & fingers), antique green floral dress with knit sweater, white buckle shoes

**19 13" LATER ISSUE KATHE KRUSE CHILD**, painted features, blonde hair, cloth body, green outfit with backpack, red shoes

**20 16" SCHOENHUT BOY, BROWN SLEEP EYES**, O/M with 2 teeth, blonde mohair wig, jointed wood body, black/white outfit with Schoenhut shoes, (crazing behind ears), (body torso repaint, Schoenhut label on body painted over)

**21 18 1/2" BOY LANCASTER RAG, LATE 19TH CENTURY**, COTTON STOCKINET HEAD PAINTED BLACK, PAINTED FEATURES, BLACK WOOL HAIR, 1 PIERCED NOSTRIL, EARS ARE PART OF STOCKINET MASK, BROWN CLOTH BODY "BLUE WOOL SUIT WITH GOLD BUTTON TRIM, SUIT IS COMPLETELY LINED AND HAS A HIP POCKET IN THE JACKET WHICH BUTTONS RIGHT OVER LEFT. HE DOES NOT HAVE A SHIRT, BUT A SEPARATE COLLAR PINNED WITH A GOLD BAR PIN. HIS SHOES ARE KEYSTONE MARKED 4. (SOME WEAR TO CLOTHING), PROVENANCE SEPT. 21, 2003 PURCHASED FROM CAROLINE E. EDLEMAN, SEE ANTIQUE DOLL COLLECTOR ARTICLE APRIL 2009 PICTURE #2 BY CAROL CORSON

**22 16 1/2" LATER KATHE KRUSE**, painted features, cloth body, original hang tag, stripe dress, pink leather shoes

**23 9 1/2" PAPER MACHE MOTSCHMANN-TYPE**, dark pupiless glass eyes, Taufling body, 2 antique dresses, (crazing to head, minor paint touchup)

**24 10" BLACK HAIR CHINA SHOULDER HEAD**, painted features, brown eyes, cloth body with china limbs, antique plaid dress

**25 11" LANCASTER RAG TODDLER**, LATE 19TH CENTURY, COTTON STOCKINET HEAD PAINTED BLACK, PAINTED FEATURES, BLACK WOOL HAIR (LARGE MISSING AREA BACK OF HEAD), PIERCED NOSTRILS, BROWN CLOTH BODY, "DRESSED IN A RED, BLACK, AND WHITE CHECKED ROMPER" SEE ANTIQUE DOLL COLLECTOR APRIL 2009 ARTICLE DOLL # 10, CAROL CORSON ARTICLE, (SOME REPAIRS TO BODY FABRIC)

**26 7" PAPER MACHE MOTSCHMANN-TYPE INFANT**, dark pupiless glass eyes, cloth jointed Taufling body, antique white gown & bonnet

**27 18 1/2" PAPER MACHE S/H**, brown glass pupiless eyes, painted black covered wagon type curls (wear), cloth body, great antique dress, blue leather shoes, (some face rubs)

**28 15" K\*R 115 TODDLER, BROWN GLASS SLEEP EYES**, painted blonde wispy hair, (some rough spots), compo body (thigh cracks), (right finger repair, 2 broken fingers left hand), white shirt

**29 8 1/2" BLACK STOCKINET CLOTH DOLL, EMBROIDERED FEATURES**, red cape (wear), antique black check outfit, w/ red ribbon Doll Collector's of America (DCA) 2011

**30 27" PAPER MACHE SHOULDER HEAD** (some lower cracking), dark pupiless glass eyes, painted features, black sculpted hair, cloth body (stains), antique outfit & undergarments, brown leather shoes (wear), few areas of facial touchups

**31 25" ICHIMATSU, SWIVEL HEAD OF GOFUN**, on shoulder plate, hips, lower legs and arms, Taufling, cloth joints (floating), upper arms, legs & midsection, black hair wig, dark glass eyes, (marks on face, brows worn), orig. traditional dress

**32 27" PAPER MACHE W/ GREINER LABEL**, painted features, black wispy curls & molded hair, cloth body with leather arms, antique blue jacket & skirt, red leather shoes, (nose repair & face touchups, some cracking to shoulder plate)

There will be no inspections of Dolls/Lots after the auction begins

Withington Auction, Inc.

6

Dolls at Auction - Oct 20, 2022

There will be no Inspections of dolls / lots after the auction begins

Withington Auction, Inc. - October 20, 2022



- 33 21" PAPER MACHE, DARK PUILESS GLASS EYES** (face rubs), Motschmann-type, cloth jointed, Taufling body, wood arms, hands, legs, feet (may be replaced), (back -3 initials?) black. leather shoes (wear), White dress
- 34 33" PAPER MACHE W/ GREINER LABEL**, black pupiless flirty eyes, black center part molded hair, cloth body with leather arms (wear, finger damage), antique red dress, two tone leather shoes, (some facial rubs)
- 35 25" MOTSCHMANN-TYPE BABY, WAX-OVER-PAPER MACHE**, brush strokes above ears, antique bonnet, (crazing on face, head loose), C/M, blue gl. sleep eyes, paper mache shoulder & torso, wood arms & legs, jointed ankles & wrists, Taufling body, cloth covered midsection, upper arms & legs, (floating joints), plaid dress w/ silver rattle / whistle, one red shoe missing)
- 36 24" BISQUE INC. S&H 929 CHILD DOLL**, blue glass eyes, OM with 2 teeth, PE, blonde mohair wig, straight wrist compo body, pink dress
- 37 23" PAPER MACHE W/ GREINER LABEL**, painted features, center part molded black hair, cloth body, antique blouse & skirt, black leather boots (wear), (paint touchups),
- 38 26" PAPER MACHE W/ GREINER LABEL**, dark pupiless glass eyes, black center part wispy curls hair, cloth body w/ red leather arms, black/red leather shoes, antique red dress & apron, (nose & facial rubs)
- 39 18"x10"x7 1/2" PINE GRAIN PAINT**, flat top, lift top trunk, yellow pin stripe decoration, original lock, Chippendale top handle, original hinges, (wear, & gouge in top)
- 40 12 1/2"x6"x 6 1/2" DOVETAILED LIFT TOP WALNUT TRUNK** on bun feet, with 12+ pairs of antique socks, & antique doll quilt
- 41 12"x7"x7" PAPER COVERED DOME TOP TRUNK**, removable top tray, 3 pairs of doll shoes, & 7 small antique doll outfits, etc. (loss to paper, missing handles)
- 42 18"x 9 1/2"x8" SMALL CEDAR TRUNK**, lift top, with assorted antique doll clothes
- 43 12"x7 1/2"x9" PAPER COVERED DOME TOP TRUNK WITH INTERIOR COMPARTMENTS**, (missing 1 handle, paper loss), signed on back of tray "Laura Mary Burgess 12 Sep. 1869"
- 44 BOX LOT OF SMALL DOLLS, CLOTHES & PRESENTATION TRUNK**, 20 +- antique doll clothes for 3" - 7" dolls, tiny hats, 3 - Darlene Lane artist dolls, 6 small dolls, including all bisque Oriental in original box
- 45 24"LX9 1/2"WX6 1/2"T RECTANGULAR PAINT DECORATED LIFT TOP**, dovetail box, paper-lined, orig. lockset & hinges, yellow, black, & red decoration, (rubs, long check in top)
- 46 18"x9 1/2"x10 1/2" FLAT TOP DOLL TRUNK WITH LIFT OUT TRAY** & 10+ pcs. assorted Kamkins doll clothes and shoes marked "Doris" on the bottoms
- 47 18"x11"x10" FLAT TOP DOLL TRUNK WITH 10+ PCS. KAMKINS DOLL** clothes for early jointed Kamkins
- 48 LOT OF 3 ANIMALS, 1 - 7" TALL 19TH C SEATED VELVET CAT RATTLE**, 1 - 6" brown mohair teddy bear (wear), & 1 - 14" mohair teddy bear (very worn)



033



034



035



036



037



038



039



040



041



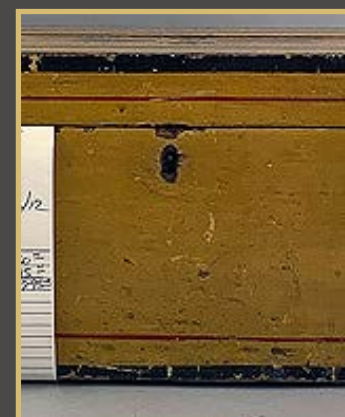
042



043



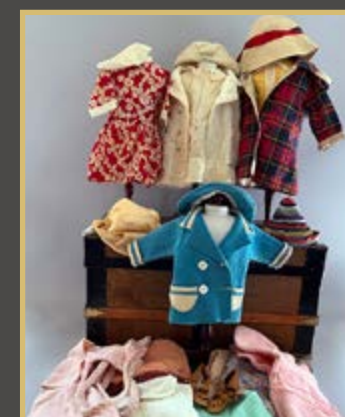
044



045



046



047



048

There will be no Inspections of dolls / lots after the auction begins

*Withington Auction, Inc. - October 20, 2022*

There will be no inspections of Dolls/Lots after the auction begins

*Withington Auction, Inc.*

*Dolls at Auction - Oct 20, 2022*





049



050



051



052



053



054



055



056



057



058



059



060



061



062



063



064

- 49 21 ½" ALABAMA BABY CLOTH DOLL**, PRESSED & OIL PAINTED FEATURES (NOSE RUB), BROWN BRUSH STROKES ON HAIR (WORN), STITCHED APPLIED EARS, CLOTH W/ BLUE PAINTED BOOTS, BLUE FLORAL DRESS W/ RED WOOL JACKET (HOLES), (RIGHT HAND REPAIRS), RING ON LEFT HAND, W/ 24" TRUNK & WARDROBE (10+PCS), DRESSES, CAPE, BONNET, NIGHTGOWN, BED JACKET, ROBE, ETC., (RED RIBBON 2013 DCA)
- 50 4 ½" TALL ANTIQUE GERMAN PAPER MACHE SQUEAK TOY DOG**, painted features on sloped bellows base, (works), (partial base label, unreadable), very good condition
- 51 4 ½" GRODNER TAL WOOD TUCK COMB**, painted features, black ringlet curls, peg wood body, antique silk red outfit (faded), blue paint shoes, (facial paint loss)
- 52 5 ½" GRODNER TAL WOOD TUCK COMB**, painted features, black ringlet curls hair, peg wood body, antique black/yellow print dress, painted brown shoes, (wear to right hand)
- 53 4 ¾" GRODNER TAL WOOD DOLL, PAINTED FEATURES**, carved black hair with bun, peg wood body, black painted slippers, antique dress & undergarments, (facial rubs & touchups)
- 54 6" GRODNER TAL WOOD DOLL**, painted features with black brush stroke hair, brown eyes, peg wood body, painted pink shoes, antique white outfit, (some facial crazing)
- 55 5" GRODNER TAL WOOD DOLL**, painted features, blonde long braided hair (breaks), blue eyes, peg wood body, antique dress, red/blue ptd. shoes
- 56 3 ½" GRODNER TAL WOOD TUCK COMB DOLL**, painted features, black curls, peg wood body, antique dress, red shoes (some facial rubs/wear)
- 57 6" GRODNER TAL WOOD LADY DOLL**, painted features, black brush stroke hair, blue eyes, rosy cheeks, peg wood body, yellow/red painted slippers, green silk antique outfit, (scuffs & facial wear)
- 58 6" GRODNER TAL WOOD TUCK COMB**, painted features, black brush stroke hair, peg wood body, red paint shoes, antique outfit & undergarments,
- 59 LOT OF 3: SMALL UNDRESSED GRODNER TAL DOLLS**, 1 - 4 ½" man, painted features, peg wood body, 1 - 4" woman, painted features, brush stroke black hair, peg wood body, & 1 - 3" flat top head, painted features, peg wood body
- 60 6" GRODNER TAL WOOD DOLL FAIRY PRINCESS**, painted features, blonde braided hair, peg wood body, red paint shoes & socks, antique outfit & undergarments
- 61 LOT OF 5: SMALL GRODNER TAL DOLLS 1" - 3 ½" TALL**, painted features, 3 in antique outfits, 2 - undressed, peg wood bodies, painted shoes, detail on 1" doll is unbelievable!
- 62 21 ½" BLACK HAIR, CENTER-PART CHINA**, painted features, brown eyes, cloth body w/ red leather hands, black leather shoes, antique wool plaid outfit, (wear)
- 63 16" COMPO CHARACTER BOY, PAINTED FEATURES**, O/CM, BJCB, blue wool overalls, leather sandals, (neck socket rub)
- 64 21" PORTRAIT JUMEAU 10, BLUE GLASS EYES**, PE (TINY NICK), CM, BLONDE MOHAIR WIG, STRAIGHT WRIST COMPO BODY, ANTIQUE WHITE/BLUE DRESS (FADED & MELTING), MARKED JUMEAU SHOES, TINY NICK RIGHT CORNER EYE, (SOME WEAR TO LEFT HAND FINGERS)

There will be no inspections of Dolls/Lots after the auction begins

Withington Auction, Inc.

10

Dolls at Auction - Oct 20, 2022

There will be no Inspections of dolls / lots after the auction begins

Withington Auction, Inc. - October 20, 2022



- 65 23" DEP S&H 749 11, BLUE GLASS EYES**, PE (nick), CM, red mohair wig, BJCB, faded blue dress, brown French leather shoes (wear), (wig pulls)
- 66 22" 9 EJ JUMEAU, BLUE GLASS EYES**, PE (left nick), CM, blonde mohair wig, straight wrist compo body, purple silk dress (melting), marked EJ shoes (wear), blue bead Jumeau jewelry
- 67 16 ½" BISQUE CHARACTER HEAD MK: "VAN ROZEN FRANCE DEPOSE"**, BROWN GLASS EYES, OPEN-WIDE, SMILING MOUTH, BLONDE MOHAIR WIG, WOOD & COMPO JOINTED BODY (TWO BROKEN FINGERS LEFT HAND), BLUE WOOL UNIFORM (RENE ON HAT), GOLD TRIM, BROWN LEATHER GERMAN SHOES
- 68 15" PAPER MACHE SOLDIER, BLUE GLASS EYES**, painted features & hair, compo/paper mache body, blue felt soldier outfit, (facial rubs), (Carol had this doll labeled as rubber?)
- 69 19" SASHA HARD PLASTIC**, painted features, brown mohair wig, red check dress, (fading to plastic)
- 70 7" PAPER MACHE SHOULDER HEAD**, painted features, black curls, cloth body with leather arms (wear), antique green floral dress with white undergarment (staining), with 4 additional antique outfits & violin shape covered paper box with label, ( 2 pinholes in head w/ crazing)
- 71 9" TALL AUTOMATON, KEY-WIND, MUSICAL RABBIT** in "cabbage basket" (faded), white rabbit goes up & down, ears move, & mouth opens & closes while music is playing, Bottom label: *Au Nain Bleu Paris*, works sporadically
- 72 22 ½" POURED WAX, BROWN GLASS EYES**, CM, blonde mohair (sparse), cloth body w/ wax limbs (broken toe left foot), antique brown dress
- 73 18" WAX-OVER-COMPO**, blue glass eyes, CM, blonde mohair skin wig, straight wrist compo body, white dress, white leather shoes, (nose repair & some touchups)
- 74 22 ½" PORTRAIT JUMEAU 10**, BLUE GLASS EYES, PE (NICK), CM, STRAIGHT WRIST BLUE STAMP JUMEAU COMPO BODY (LEFT LEG BALL REPAIR), ANTIQUE BLUE SILK SUIT, MARKED JUMEAU SHOES
- 75 26" BISQUE, INC. S 16 H 939**, blue glass sleep eyes, PE, OM with teeth, blonde mohair wig, straight wrist compo body, red wool coat (wear), brown leather French shoes (wear), (firing line by left ear)
- 76 22" M B JAPAN (MORIMURA)**, blue glass sleep eyes, OM w/ teeth, brown mohair wig, BJCB, white dress, white leather shoes
- 77 13 ½" HEUBACH 1784 "SINGING HEUBACH"**, painted features, molded blonde hair w/ pink ribbon, OM, BJCB (cracks), pink/white dress, brown leather shoes
- 78 8 ½" STEINER C, BLUE GLASS EYES**, PE (nicks repair), CM, blonde mohair wig, straight wrist compo body, green dress, brown buckle shoes, (tiny pock mark by right eye, tiny corner chip right eye corner)
- 79 10" STEINER INCISED C WITH RED STAMP**, blue glass eyes with lever, PE, CM, blonde mohair wig, compo body (finger wear left hand), blue wool outfit, marked CM shoes with tassels, (left eye corner is factory overcut), with extra antique outfit (firing line flaw by left mold seam top of head)
- 80 13" PORTRAIT JUMEAU 8, BLUE GLASS EYES, CM, PE**, BLONDE MOHAIR WIG, (RIGHT EYE CORNER FLAKE, PIERCED EARS REPAIRS), JUMEAU MARK STRAIGHT WRIST COMPO BODY (WEAR), ANTIQUE GREEN OUTFIT, LEATHER BOOTS (WEAR), (NECK BASE CHIP)

There will be no Inspections of dolls / lots after the auction begins

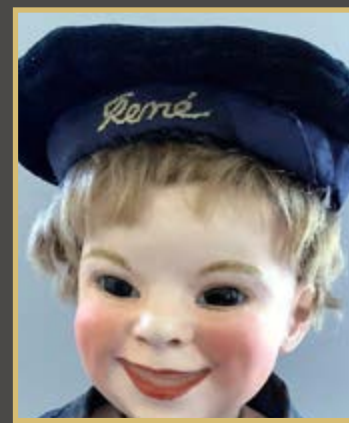
*Withington Auction, Inc. - October 20, 2022*



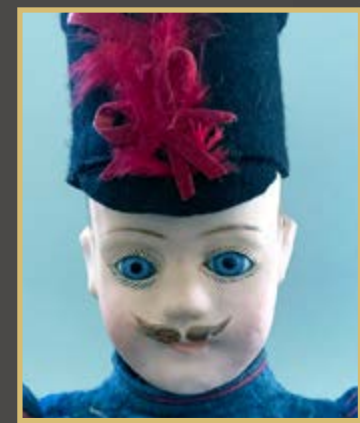
065



066



067



068



069



070



071



072



073



074



075



076



077



078



079



080

There will be no inspections of Dolls/Lots after the auction begins

*Withington Auction, Inc.*





081



082



083



084



085



086



087



088



089



090



091



092



093



094



095



096

There will be no inspections of Dolls/Lots after the auction begins

Withington Auction, Inc.

14

Dolls at Auction - Oct 20, 2022

**81 16 ½" PORTRAIT JUMEAU 1**, BROWN GLASS EYES, PE (NICKS), CM, BLOND SKIN WIG, STRAIGHT WRIST COMPO BODY, (POCK MARK TIP OF NOSE, MAY HAVE A TINY REPAIR LEFT EYE CORNER), (WIG GLUED DOWN), ANTIQUE BLUE DRESS, MARKED M G SHOES

**82 14" PORTRAIT JUMEAU 2/0**, BROWN GLASS EYES, PE (NICKS), CM, BLONDE SKIN WIG, STRAIGHT WRIST COMPO BODY, ANTIQUE BLUE/MAROON OUTFIT, BLUE MARKED JUMEAU SHOES, (SMALL RIM CHIP BACK OF HEAD, WIG/PATE GLUED DOWN)

**83 16" SCHMITT INCISED 1**, BLUE GLASS EYES, PE, CM, BLONDE SKIN WIG, STRAIGHT-WRIST COMPO BODY, ANTIQUE WHITE UNDERGARMENTS, FRENCH SHOES, (BODY TOUCHUPS)

**84 10 ½" STEINER A, BROWN GLASS EYES, PE, CM**, blonde mohair wig, straight-wrist compo body, antique white dress, new shoes, (nose rub)

**85 13" STEINER INCISED 0**, BLUE GLASS EYES, PE (NICKS), CM, BLONDE SKIN WIG (AS IS), STRAIGHT WRIST COMPO BODY (FINGER REPAIRS), DRESSED IN BLUE WOOL SAILOR OUTFIT (WEAR), WITH JACKKNIFE NECKLACE

**86 17" JUMEAU FASHION 4**, BLUE GLASS EYES, BLOND BRAIDED MOHAIR WIG, PE (LEFT EAR NICK), CM, **JOINTED WOOD BODY**, WHITE WALKING SUIT, PALE BLUE BOOTS, WITH 16"x10"x9" DOME TOP TRUNK WITH PARTIAL FRENCH LABEL ON BOTTOM WITH ORIGINAL WARDROBE & WONDERFUL ACCESSORIES, (BROKEN HANDLES ON TRUNK), SEE PHOTOS

**87 19" STEINER, BROWN GLASS EYES, CM**, blonde mohair wig, straight wrist compo body (finger cracks), red antique outfit (melting), French marked shoes

**88 10" KEY WIND SKIN COVERED SHEEP**, legs move, head goes up & down, & sheep bleats/bahs, on metal wheels with lever by tail area, (missing right ear)

**89 17 ½" STEINER A, BROWN GLASS LEVER ACTION EYES**, PE (NICK),PULL STRING VOICE BOX, OM WITH UPPER & LOWER TEETH (1 LOWER TOOTH CHIP), BROWN MOHAIR WIG, STRAIGHT WRIST COMPO BODY (TOUCHUPS), ANTIQUE WHITE DRESS, WHITE LEATHER 3 STRAP SHOES

**90 18 ½" BISQUE SCHMITT 2 SHIELD MARK**, ROUND FACE, BLUE GLASS EYES, PE, CM, BROWN MOHAIR WIG, STRAIGHT WRIST COMPO BODY, ANTIQUE IVORY DRESS, MODERN SHOES, (TINY FLECK RIGHT EYE CORNER)

**91 14" DEPOSE JUMEAU 5, BROWN GLASS EYES, PE, CM**, blonde mohair wig (wig pulls), straight-wrist compo body (some replaced parts), antique white outfit (melting), marked Jumeau shoes (wear),

**92 16 ½" STEINER C, BLUE GLASS EYES, PE, CM**, blonde mohair wig, compo body with bisque hands, red/white antique dress (melting), (tiny right eye corner fleck), red leather boots

**93 10" STEINER C, BROWN GLASS EYES, PE** (right ear tiny nick), CM, blonde skin wig (wear & loss), straight wrist compo body (arms repaint), antique red dress (wear & fading), French marked M G shoes, with 8" red wood handle parasol

**94 9 ½" STEINER A NAMED "JEROME"**, BLUE GLASS EYES, PE, CM, BLOND SKIN WIG, COMP/TAUFLING BODY, BLUE PANT SUIT, BROWN BUCKLE SHOES

**95 16" MOTHEREAU MARKED J M**, BLUE GLASS EYES, PE (NICKS), CM, BLOND MOHAIR WIG, STRAIGHT WRIST COMPO BODY, ANTIQUE SILK PURPLE OUTFIT (WEAR, FADING), BLACK FRENCH SHOES (WEAR), (TWO TINY POCK MARKS)

**96 10 5/8" BISQUE 6/0 BLEUETTE**, BLUE GLASS EYES, OM WITH TEETH, RED MOHAIR WIG, BJCB, ORANGE/TAN DRESS (STAINS), WHITE LEATHER SHOES, IMPRESSED 1 ON FEET & 2 ON BACK, HAS EXTRA EYEBROW BRUSH STROKE ON RIGHT TOP OF FOREHEAD

There will be no Inspections of dolls / lots after the auction begins

Withington Auction, Inc. - October 20, 2022



**97 13" BROWN COMPLEXION PARIS BEBE TETE JUMEAU DEPOSE** (FAINT RED LETTERS), BROWN GLASS EYES, PE, OC/M, BJCB, ANTIQUE RED DRESS, FRENCH LEATHER STRAP SHOES,  
**98 10 ½" SFBJ 301, BROWN GLASS SLEEP EYES**, PE, OM with teeth, black mohair wig, BJCB, polka dot dress, (hairline in forehead, left top eye fleck)  
**99 13" SFBJ 251 TODDLER**, blue glass sleep eyes, OM with teeth, blonde mohair wig, BJCB (some crack- ing), sailor outfit (wear)

**100 15" IZANNAH WALKER BOY "JOHN THAYER" CLOTH DOLL**, CENTRAL FALLS, RI, 19TH CENTURY, PRESSED MOLD STOCKINET HEAD, PAINTED FEATURES, WISPY PARTED HAIR, PAINTED BLACK BOOTS WITH RED SOCKS, BROWN CLOTH BODY, STITCHED FINGERS, ANTIQUE WOOL RED PLAID DRESS WITH WHITE COLLAR & BLACK RIBBON BOW, (FACIAL CRAZING & CRACKS, NOSE RUB, WEAR SPOTS TO HAIR, SOME SMALL TEARS TO DRESS), VERY RARE AS A BOY, WITH DISPLAY ITEMS FROM CAROL'S BEDROOM, 17" RED STENCILED PERIOD CHILD'S WAGON SEAT, 2 - 2" ROUND STENCILED TIN ITEMS, SMALL CLOTH DOG & ELEPHANT, SMALL TIN WAGON, SMALL WHIP, SMALL CRAZY QUILT, & SMALL TIN TRAIN.

NOTES FROM CAROL "15" BOY, NAMED JOHN THAYER AFTER HIS LAST OF THREE GENERATIONS OF HIS ORIGINAL FAMILY. HE IS IN HIS SEWN ON ORIGINAL DRESS WITH MATCHING TROUSERS. HIS SIDE-PARTED HAIR IS BRUSHED TO THE RIGHT. HE HAS HIGH PAINTED BLACK BOOTS WITH RED SHIELDS AT THE TOP AND GRAY PAINTED SOLES. WALKER DOLLS HAVE DOWN TILTED FEET AND EVEN THE ONES IN SUPER ORIGINAL CONDITION HAVE WORN TOES WHICH MAY BE CAUSED BY BEING CARRIED BY ONE ARM WITH ITS TOES DRAG- GING ON THE FLOOR. JOHN THAYER, NAMED AFTER THE LAST OF THREE GENERATIONS OF THE SAME FAMILY WHO WERE THE ORIGI- NAL OWNERS, JOHN THAYER OF CHESTER COUNTY, PA. HE WAS ORIGINALLY JOHN'S GRANDMOTHER'S DOLL. PRINT OF PAINTING OF BOY IN SAME OUTFIT IS DATED 1848.

**101 9 ½" SFBJ 301 PARIS, BLUE GLASS SLEEP EYES**, OM with teeth, blonde mohair wig, BJCB, white dress, white leather boots, (head loose)  
**102 15" SFBJ 236 CHARACTER**, blue glass sleep eyes, OM with teeth, brown mohair wig, BJCB, peach overcoat, white leather shoes, (excessive wig glue)  
**103 18 ½" JUMEAU 8 SCRUB MARK**, brown glass eyes, PE (nicks), CM, HH wig, blue stamp Jumeau compo body (left finger repairs), blue/red outfit, brown leather boots  
**104 10 5/8" BISQUE INC. 2 (PREMIERE BLEUETTE?)**, BLUE GLASS EYES, PE, OM WITH TEETH, BLONDE MOHAIR WIG, BJCB MARKED 2 (BODY HAS HAD SOME WORK), 2 ON ONE FOOT 0 ON THE OTHER, WHITE DRESS, BROWN LEATHER SHOES, (MANUFACTURING RED LINE OVER LEFT EYEBROW)  
**105 11" SFBJ 60 PARIS**, blue glass eyes, OM with teeth, red mohair wig, BJCB (nick on right wrist), white/blue jacket  
**105.01 28" DEPOSE TETE JUMEAU BTE S.G.D.G.** 13 red stamp, blue glass eyes, CM, blonde mohair wig, PE, blue stamp Jumeau compo body, brown leather shoes, pink silk dress, (uneven head rim sanded)  
**106 14" SFBJ 227 CHARACTER**, blue glass eyes, blonde painted hair, OM with teeth, straight wrist compo body, blue sailor suit, white leather shoes  
**107 13" SFBJ 247 PARIS**, blue glass sleep eyes, OM with teeth, blonde mohair wig, BJCB (wear), (no clothes)  
**108 13" SFBJ 252 TODDLER**, blue glass sleep eyes, CM, blonde mohair wig, BJCB (finger wear), white dress, white leather shoes  
**109 11" UNIS FRANCE 251**, blue glass sleep eyes, OM with teeth, brown mohair wig, BJCB, green/purple dress (Bleuette ?)  
**110 10 ½" UNIS FRANCE 60**, blue glass sleep eyes, OM with teeth, brown mohair wig, BJCB, gray outfit (Bleuette ?)  
**111 17 ½" IZANNAH WALKER GIRL CLOTH DOLL**, CENTRAL FALLS, RI, 19TH CENTURY, PRESSED MOLD STOCKINET HEAD, PAINTED FEATURES, CENTER PART BROWN HAIR, WITH 3 CURLS ON EACH SIDE OF FOREHEAD, PAINTED BLACK BOOTS WITH RED LACES, TAN CLOTH BODY, STITCHED FINGERS, GREEN DRESS MARKED ORIGINAL (FADING & TEAR AT BACK), WITH PERIOD LADDER- BACK DOLL CHAIR, (FACIAL/NOSE & HAIR RUBS, RIGHT ARM JOINT WEAR, FOOT STICH), & EXTRA BLUE & WHITE DRESS, PROVE- NANCE: NANCY SMITH COLLECTION



097



098



099



100



101



102



103



104



105



105.01



106



107



108



109



110



111





112



113



114



115



115.01



116



117



118



119



120



121



122



123



124



125



126

**112 7" BISQUE , BROWN GLASS EYES**, CM, blonde mohair wig with long double braids, cloth body with bisque limbs, regional, antique dress & hat, with sewing kit

**113 12" BISQUE 3, BLUE GLASS EYES**, blonde mohair wig, CM, straight wrist compo body, antique red dress & Hat, brown strap shoes (right heel missing) & 10 ½" red parasol

**114 11" K\*R 116, BROWN GLASS SLEEP EYES**, OC/M with teeth, blonde mohair wig, BJCB, white check outfit

**115 19 ½" IZANNAH WALKER GIRL "CAROLINE" CLOTH DOLL**, CENTRAL FALLS, RI, 19TH CENTURY, PRESSED MOLD STOCKINET HEAD, PAINTED FEATURES, CENTER PARTED BROWN HAIR WITH 2 CHEEK CURLS EACH SIDE OF FACE & 6 BACK OF NECK CURLS, RED LEATHER SHOES (AS IS), PERIOD RED & BLUE PRINT DRESS (AGE TEARS), & GREEN DRESS, ALONG WITH 12" DOLL'S YELLOW PAINTED BARREL- BACK CHAIR (ELLIS?), (FACIAL TOUCHUPS, WEAR, CRACKING)

**115.01 18"L X 9"W X 7"T PINE GRAIN PAINTED LIFT TOP TRUNK**, ORIGINAL HARDWARE, (SMALL AREAS OF WEAR), HELD THE EXTRA CLOTHES & ACCESSORIES FROM LOT 115, (SOME DRESSED LABELED "CAROLINE"), 10+ DRESSES, SHOES, & ACCESSORIES

**116 8 ½" BROWN BISQUE S&H 1303 BOY**, painted features, brown straight wrist compo body, black, Wig (skin?), black felt outfit (wear), (finger damage left hand)

**117 6 ½" BISQUE 0, BROWN GLASS SLEEP EYES**, CM, blonde mohair wig, lederhosen style outfit, brown leather shoes

**118 11 ½" INCISED K 4/0 GERMANY CHARACTER BOY**, painted features, CM, blonde mohair wig, BJCB, blue/black stripe suit, brown leather shoes

**119 14 ½" K\*R 101 BROWN BISQUE CHILD**, PAINTED FEATURES, CM, BLACK CURLY HAIR (SKIN?), BJCB, DENIM TYPE TROUSERS, BROWN LEATHER BUTTON BOOTS

**120 15" KESTNER 183 CHARACTER CHILD**, blue glass eyes, PE, CM, blond mohair wig, straight wrist compo body, antique green dress with red under skirt, brown leather button boots (wear)

**121 12" KESTNER 185 CHARACTER CHILD**, painted features, blonde mohair braided wig, BJCB, peach dress

**122 15" BRU FACE (132?), BLUE GLASS EYES**, PE, OC/M, blonde mohair wig, straight wrist compo body, antique peach dress, brown leather shoes (wear)

**123 18" K\*R 101, PAINTED FEATURES**, CM, gray mohair wig with side curls, BJCB, pink check dress, brown leather boots (wear), (rear rim chip)

**124 15" S&H 8 908 DOME HEAD**, blue glass eyes, PE, O/CM, blonde mohair wig, straight wrist compo body, brown leather Jumeau marked shoes, pink floral dress

**125 14 ½" S&H 969 POUTY, CHARACTER CHILD**, blue glass eyes, PE (nick), OM with teeth, Blonde mohair wig, straight wrist compo body, blue/white/pink outfit, white leather boots, (faint mold imperfection right cheek)

**126 16" INCISED 4, BROWN GLASS EYES, PE**, OM WITH TEETH, BLONDE SKIN WIG, STRAIGHT WRIST COMPO BODY, PULL STRINGS W/ CRIER (WORKS SOMETIME), (FINGER/HAND ROUGHNESS), GREEN DRESS WITH WHITE APRON



**127 18" S&H 739, BLUE GLASS EYES, PE, OM** WITH TEETH, BLONDE MOHAIR SKIN WIG, BJCB W/ CRIER, PAPER LABEL: BEBE JUMEAU, DIPLOME D'HONNEUR (CHIPS & WEAR), PINK DRESS, (NO SHOES)

**128 16" INCISED 11 AT KESTNER**, blue glass sleep eyes, CM, blonde mohair wig, straight wrist compo body, blue/white stripe dress, (left eye corner repair)

**129 9" MARTHA CHASE, OIL PAINT STOCKINET HEAD**, BRUSH STROKE BLONDE HAIR, STOCKINET COVERED & PAINT CLOTH BODY, ANTIQUE WHITE DRESS, (WEAR TO HEAD & BODY), THE RAREST SIZE CHASE

**130 LOT OF 3 DOLLS PURCHASED BY CAROL FROM DOROTHY & FREIDA SCHOENHUT IN 1990 & 1996.** THESE DOLLS WERE ORIGINALLY PURCHASED BY ALBERT SCHOENHUT IN GERMANY IN 1910 FROM WHICH HE MODELED THE FIRST SCHOENHUT DOLLS. THEY WERE THEN GIVEN TO HIS GRANDCHILDREN, DOROTHY, FRIEDA, NORMAN, & POSSIBLY GEORGE. (PLEASE SEE ATTACHED HISTORY. 1 - 15 1/2" K\*R 114 BOY, PAINTED FEATURES, RED MOHAIR WIG, BJCB, DRESSED IN LEDERHOSEN, 2 - 15 1/2" K\*R 101 TWINS, PAINTED FEATURES, BLONDE BRAIDED MOHAIR WIGS, BJCB, ORIGINAL, REGIONAL RED FLORAL DRESSES WITH WHITE APRONS (W/ COLORED RIBBONS) TWO HAVE HATS, RED LEATHER BOOTS W/ SOCKS. WE ARE KEEPING THESE DOLLS TOGETHER AS A LOT.

**131 14 1/2" CP 215 39 (CATTERFELDER PUPPENFABRIK)** character girl child, painted features, CM, brown mohair wig with side buns, BJCB, blue wool sailor outfit, brown leather WITT marked shoes

**132 16 1/2" K\*R 117A, BLUE GLASS SLEEP EYES**, CM, brown mohair wig, BJCB (broken little finger right hand), blue sailor outfit, brown leather button boots

**133 11" HEUBACH 6970 , BLUE GLASS SLEEP EYES**, CM, blonde mohair wig, BJCB, blue check dress, brown leather boots (wear)

**134 17" BROWN BISQUE AM 1894**, brown glass eyes, OM with teeth, black skin? wig, BJCB, ethnic outfit

**135 14 1/2" KESTNER 167, BLUE GLASS SLEEP EYES**, OM with teeth, red/blonde mohair wig, BJCB, olive green over jacket, no shoes

**136 14" S&H 759, BROWN GLASS EYES**, PE (nick), brown mohair wig, OM with teeth, compo body with bisque arms, white/red felt outfit, brown leather shoes (as is)

**137 11" JDK 221 GES. GESCH, GOOGLY**, BROWN RIGHT GLANCING GLASS EYES, BLONDE MOHAIR WIG, WATERMELON SMILE, FLORAL DRESS, BLACK SHOES

**138 14" S&H 1278, BROWN GLASS SLEEP EYES, PE** (nick), OM with teeth, blonde mohair wig, BJCB, green dress with white apron, black leather shoes

**139 16" DOLLY DIMPLE HEUBACH CHARACTER**, brown glass sleep eyes, OM with teeth, red mohair wig, BJCB, antique green dress (melting), blue leather shoes, (very faint mold flaw by right bridge of nose, 2 - pock marks top of forehead)

**140 12" BLACK BISQUE" 34-22 (KUHULENZ)**, brown glass eyes, OM with teeth, black micro braids hair, BJCB, ethnic outfit

**141 15" S&H 1358, BROWN GLASS SLEEP EYES**, PE (nicks), OM with teeth, black mohair wig, straight wrist brown compo body, red dress (melting), brown leather buckle shoes

**142 15 1/2" HEUBACH 7955, (ARTIST-MADE BY S. ANTOON 1995)**, painted features, sculpted blond hair, BJCB, ethnic outfit, brown leather strap shoes (wear)



127



128



129



130



131



132



133



134



135



136



137



138



139



140



141



142





143



144



145



146



147



148



149



150



150.01



151



152



153



154



155



156



157

**143 14 ½" CP 210 39 (CATTERFELDER PUPPENFABRIK)** character boy child, painted features, CM, blonde mohair wig, BJCB, blue wool sailor suit (holes), brown leather WITT marked shoes

**144 16 ½" KATHE KRUSE, WIDE HIPS**, PAINTED FEATURES, MOLDED MUSLIN HEAD (WEAR), CLOTH BODY, RED KNIT & PLAID OUTFIT, STRAW SANDALS, (WEAR TO LEFT FINGERS, FACIAL RUBS)

**145 16" IZANNAH WALKER GIRL "ELIZA", CLOTH DOLL, CENTRAL FALLS, RI, 19TH CENTURY**, PRESSED MOLD STOCKINET HEAD, PAINTED FEATURES, CENTER PART BROWN HAIR, WITH 1 CURL ON EACH SIDE OF EAR, WISPY HAIR BACK OF NECK, PAINTED BLACK BOOTS WITH LACES (WEAR), TAN CLOTH BODY, STITCHED FINGERS, WHITE FLORAL DRESS, (NOSE TOUCHUP, WEAR & CRACKING), WITH 11" BROWN PAINT BARREL BACK DOLL CHAIR (J. ELLIS?)

**145.01 13 ¼"L X 8"W X 6 ½"T PAINT DECORATED LIFT TOP DOME TOP TRUNK FOR THE IZANNAH WALKER "ELIZA"**, WITH 5 DRESSES, 3 PAIRS OF SHOES, QUILT, BONNET, ETC., YELLOW & BROWN SPONGE DECORATION, SNIPE HINGES, (TOP HAS A CRACK) SEE PICTURE ON PAGE 69

**146 14" KATHE KRUSE BOY**, molded muslin head, painted features, cloth body, blue jacket with brown shorts (wear), (tiny nose & head rubs) doll VII- Du Mein (not weighted baby)

**147 10" "ALICE" CHINA HEAD**, turned shoulder head, molded & painted features, blue eyes, CM, brush back brown hair with gold band, Taufeling body with china arms, black painted boots (repair to right foot), antique white dress & undergarments

**148 11 ½" CHINA, PAINTED FEATURES**, center part black hair, exposed ears, sausage curls, brown eyes, cloth body with leather arms (wear), antique green dress & undergarments

**149 13 ½" WAX OVER COMPO SHOULDER HEAD**, dark pupiless eyes, HH wig, cloth body with leather arms, original yellowed antique dress (melting), brown leather shoes (areas of facial rubs)

**150 18 ½" IZANNAH WALKER GIRL "PHOEBE", CLOTH DOLL, CENTRAL FALLS, RI, 19TH CENTURY**, PRESSED MOLD STOCKINET HEAD, PAINTED FEATURES, CENTER PART BROWN HAIR, WITH 3 CURLS ON EACH SIDE OF FOREHEAD, PAINTED BROWN BOOTS, BROWN CLOTH BODY, STITCHED FINGERS, RED DRESS, (APPEARS TO BE SOME REPAINT, CRAZING & WEAR), WITH 11" RUSH SEAT PAINT DECORATED LADDER BACK CHAIR

**150.01 16"L X 8"W X 7"T RED PAINT DECORATED LIFT TOP HARDWOOD BOX** WITH GREEN/YELLOW DECORATION, & 3 OUTFITS FOR THE IZZANAH WALKER "PHOEBE" & SOCKS

**151 11 ½" TALL SCHOENHUT HALF-ROLLY-DOLLY CLOWN WITH BELLS**, standing on paint decorated wood base, all original, (some paint lose, crack in back to varnish layer)

**152 9" TALL SCHOENHUT HALF-ROLLY-DOLLY WITH PAINT DECORATION** and carved wooden sheep with bell collar, bendable front legs, glass eyes, moveable head, leather ears, (paint loss to base)

**153 21" POURED WAX SHOULDER HEAD**, blue glass eyes, brown HH wig, CM, cloth body with wax limbs (break to right leg at knee), antique white dress & hat

**154 18" KATHE KRUSE TRAUMERCHEN, "SAND BABY"**, PAINTED FEATURES, MOLDED MUSLIN HEAD, CLOTH STOCKINET BODY, WHITE DRESS, WHITE KNIT SLIPPERS, (SOME FACIAL WEAR)

**155 22" POURED WAX SHOULDER HEAD, BLUE GLASS EYES**, blonde HH wig (thinning), cloth body with wax limbs, white dress

**156 24" POURED WAX SHOULDER HEAD, BLUE GLASS EYES**, CM, blonde HH wig, signed cloth body?, wax arms & legs, brown leather shoes (wear), antique print dress with label July 23, 1843

**157 7" AM 322 GOOGLY, PAINTED FEATURES**, blonde molded hair, blue left glancing intaglio eyes, CM, compo body, blue plaid romper

There will be no Inspections of dolls / lots after the auction begins

*Withington Auction, Inc. - October 20, 2022*



**158 LOT OF 4 – SWISS, BUCHERER DOLLS 6 ½” – 7 ½” TALL**, Compo heads, metal, ball-jointed bodies, compo shoes & hands, felt original outfits, Beccassine & other Comic Characters

**159 2 – SMALL PARIAN-TYPE ALL BISQUE DOLLS**, 1 – 6” lady, painted features, CM, blonde molded hair, antique brown dress (melting), & 7” boy, swivel neck, painted features, CM, molded brown hat, antique blue suit

**160 3 – SMALL BLACK DOLLS, 1 – 6” ALL BISQUE**, brown glass eyes, CM, black mohair wig, blue stripe dress, barefoot, 1 – 4” all bisque, brown glass eyes, CM, black mohair wig, painted black shoes with white socks (wear), blue stripe dress (faded), & 5 ½” bisque head, brown glass eyes, OM with teeth, black mohair wig, BJCB, red stripe dress (wear)

**161 21” ITCHIMATSU MAN, GOFUN SWIVEL HEAD**, brown glass inset eyes, molded & painted features, CM, black brush stoke hair, gofun/wood limbs, Taufling body, green silk robe

**162 22” ITCHIMATSU MAN, GOFUN SWIVEL HEAD**, brown glass inset eyes, ptd. features, CM, bald head, black hair tufts & top knot, gofun/wood limbs, Taufling body, black/brown robe, sexed, (hairlines side of chin)

**163 14” ITCHIMATSU CHILD, GOFUN SWIVEL NECK**, brown glass inset eyes, OM with teeth, black applied hair tufts, fully jointed body, gofun/wood/cloth limbs, sexed, purple kimono

**164 9 ½” ITCHIMATSU MAN, GOFUN SWIVEL HEAD**, painted features, black tuft hair, O/CM, gofun body, elaborate outfit with Samurai swords (melting), (facial cracks)

**165 LOT OF 10 ASSORTED ORIENTAL FIGURES**: 8” Emperor & 9” Empress seated platforms, & 8 other figures, 3 – 6” children, etc. in original dress.

**166 18” S&H 1009 BROWN BISQUE**, BROWN GL. EYES, PE(NICK), OM W/ TEETH, BROWN COMPO BODY, ETHNIC OUTFIT (MELTING), BROWN LEATHER HIGH BOOTS

**167 19 ½” MARTHA CHASE CLOTH DOLL**, painted features, brown bob hair, cloth body, green check dress, (facial & hair rubs)

**168 17” PRESBYTERIAN CLOTH DOLL**, painted features, stitched hands, antique red dress (fading), (wear to face/head, slice above nose), MADE BY THE WOMEN OF THE FIRST PRESBYTERIAN CHURCH, BUCYRUS, OHIO

**169 12” R JOHN WRIGHT “MUSETTE”**, painted features, blonde hair, red skirt, in original box, UFDC 2003

**170 R JOHN WRIGHT DOLLS, 17”**, “Jesse” felt boy, painted features, red hair, 72/250, green corduroy pants, fishing pole, (hand rub)

**171 2 – R JOHN WRIGHT’S, 1 – 7 ½” “LILLIAN” FELT GIRL**, painted features, red hair, red plaid skirt, hang tag & 1 – 17” “Lillian” felt girl, painted features, red hair, plaid skirt, hang tag, series 1

**172 18” KAMKINS GIRL, CLOTH DOLL**, molded and painted features, brown mohair wig, cloth body (wear), red shorts, brown leather shoes (wear)

**173 18” KAMKINS, CLOTH DOLL**, molded and painted features, blonde mohair wig, cloth body, yellow outfit, brown leather shoes, hand written back of head, L R Kampes Atlantic City pat Nov. 2-20 (facial rubs)



158



159



160



161



162



163



164



165



166



167



168



169



170



171



172



173





174



175



176



177



178



179



180



181



182



183



184



185



186



187



188



189

**174 18" KAMKINS, CLOTH DOLL**, molded and painted features, brown mohair wig, cloth body, yellow wool coat, white leather shoes, hand written back of head, Kampes Atlantic City

**175 18" KAMKINS, CLOTH DOLL**, molded and painted features, brown mohair wig, cloth body, red wool coat, print dress, white leather shoes, hand written back of head Kampes Atlantic City USA, has an old photo of a girl holding the doll (small facial rubs)

**176 18" KAMKINS GIRL, CLOTH DOLL, MOLDED AND PAINTED FEATURES**, blonde mohair wig, cloth body, purple wool coat, white dress, white leather shoes, hand written back of head, Kampes Atlantic City

**177 18 1/2" KAMKINS BOY, CLOTH DOLL, MOLDED AND PAINTED FEATURES**, strawberry blonde mohair wig, cloth body, white suit, white leather shoes, voice box (small face rub, some moth holes in suit/socks)

**178 18" KAMKINS GIRL, CLOTH DOLL**, molded and painted features, auburn mohair double braided wig, cloth body, plaid dress, black leather shoes

**179 18" KAMKINS, CLOTH DOLL**, molded and painted features, painted brown hair, cloth body, wool soldiers outfit (few moth holes), brown sandals (wear), (some facial staining)

**180 18" KAMKINS, CLOTH DOLL**, molded and painted features, brown mohair wig, cloth body, orange wool coat, print dress, brown leather shoes, hand written mark back of head, Kampes Atlantic City

**181 LOT OF 4 DOLLS, 1 - 18" KAMKINS**, painted features, cloth body, hand written Kampes on back of head (missing right hand & facial rubs), 3 - Kamkins look alike, 2 - marked Madame Alexander shoulder heads, painted features, cloth body (1 has arm damage), 1 - ??? Kamkins knockoff

**182 19" KAMKINS, CLOTH DOLL**, molded and painted features, blonde mohair wig, cloth body, blue wool coat, marked back of head L.R. Kampes Atlantic City Pat Nov, 2-20 hand written 2 line mark, (small cheek rub), brown leather shoes

**183 16 - PAIRS OF ASSORTED ANTIQUE DOLL SHOES**, various sizes & colors

**184 16 - PAIRS OF ASSORTED ANTIQUE DOLL SHOES**, various sizes & colors

**185 16 - PAIRS OF ASSORTED ANTIQUE DOLL SHOES**, various sizes & colors

**186 BOX LOT OF DOLL STRAW HATS**, various sizes, shapes, (some as is)

**187 5 1/4" FRENCH LEATHER BABY DOLL**, PRESSED LEATHER HEAD, SWIVEL NECK, PAINTED FEATURES, STITCHED LEATHER BODY, BLUE KNIT SHORTS, (1 SOCK MISSING, HEAD WEAR, LOOSE HEAD)

**188 BOX LOT OF SCHOENHUT CIRCUS ACCESSORIES**, balls, performing platforms, barrels, ladders, & seal balancing bottle (no label)

**189 LOT OF 6" LONG PAINTED WOOD NOAH'S ARK** with small animals inside & large number of small painted farm animals & people made of wood/paper mache/plastic etc.

There will be no Inspections of dolls / lots after the auction begins

*Withington Auction, Inc. - October 20, 2022*

There will be no inspections of Dolls/Lots after the auction begins

*Withington Auction, Inc.*

26

*Dolls at Auction - Oct 20, 2022*



- 190 LOT OF 9 - 2 ½" BISQUE HEAD DOLLS**, painted features, various ethnic outfits, some are all bisque
- 191 8" ALL BISQUE S&H 939, BLUE GLASS EYES**, OM with teeth, brown mohair wig, high orange paint stripe socks, black paint 2 strap shoes, white dress
- 192 2 - 5" ALL BISQUE DOLLS**, 1- blue glass eyes, CM, blonde mohair wig, light blue dress, blue painted 2 strap shoes, bent arms, 1 - blue glass eyes, CM, long blonde braided mohair wig, tan outfit, blue paint boots
- 193 LOT OF 2 - 1 - 7" BROWN ALL BISQUE**, brown glass eyes, CM, Black mohair wig, blue check shorts, & 1 - 7" Brown bisque 34, brown glass sleep eyes, OM with teeth, black mohair wig, compo body, white/blue print dress (wear)
- 194 4 ¾" GOOGLY 217, LEFT GLANCING BLUE GLASS EYES**, blonde mohair wig, impish mouth, red dress, black painted shoes, blue socks
- 195 19" KAMKINS GIRL, CLOTH DOLL**, molded and painted features, CM, blonde mohair wig, cloth body, orange suit, black leather shoes, (facial rubs)
- 196 BOX LOT OF ANTIQUE DOLL CLOTHES** mostly pinks & reds, 30+- pieces
- 197 BOX LOT OF ANTIQUE DOLL CLOTHES MOSTLY BLUES**, some Schoenhut clothes
- 198 2 - SCHOENHUT DOLLS, 1 - 19", BROWN SLEEP EYES**, OM with teeth, blonde mohair wig, pink/white dress, oval Schoenhut label on back, white leather Schoenhut shoes, & 1 - 12" Baby, brown sleep eyes, OM with 2 teeth, blonde mohair wig, oval Schoenhut label, no clothes (body crazing, peeling)
- 199 CHILD'S RED ROCKING HORSE 31"L X 14 ½"W X 23"T, LABEL ON BOTTOM WHITN? CORP, LEOMINSTER MA**, horse with reins, woven wicker seat, original red paint with red pin stripping (some wear)
- 200 18 ½" KAMKINS GIRL, CLOTH DOLL**, molded and painted features, CM, blonde mohair wig, cloth body, original white coat & yellow check dress, (minor face rubs)
- 200.01 13" BELTON TYPE SHOULDER HEAD**, blue glass eyes, CM, blonde mohair wig, cloth body with bisque limbs, ethnic outfit (wear)
- 201 18" KAMKINS GIRL, CLOTH DOLL**, molded and painted features, CM, brown mohair wig, cloth body, yellow check dress, white leather shoes, (facial soiling)
- 202 15 ½" R JOHN WRIGHT "SANTA CLAUS" #76/500**, felt, painted features, holding doll, original box
- 203 18" KAMKINS BOY, CLOTH DOLL**, molded and painted features, painted features, CM, cloth body, brown outfit, brown leather shoes, (facial rubs)
- 204 18" KAMKINS BOY, CLOTH DOLL**, molded and painted features, CM, red mohair wig, cloth body, green suit (small moth holes in hat)

There will be no Inspections of dolls / lots after the auction begins

*Withington Auction, Inc. - October 20, 2022*



190



191



192



193



194



195



196



197



198



199



200



200.01



201



202



203



204

There will be no inspections of Dolls/Lots after the auction begins

*Withington Auction, Inc.*

*Dolls at Auction - Oct 20, 2022*





205



206



207



208



209



210



211



212



213



214



215



216



217



218



219



220

**205 18" KAMKINS GIRL, CLOTH DOLL**, molded and painted features, CM, blonde mohair wig, cloth body, green suit, leather sandals, (some face rubs)

**206 18" KAMKINS, PAINTED FEATURES**, molded mask face, red mohair wig, cloth body, purple wool coat (couple of moth holes), printed label back of head (blurred)

**207 18" KAMKINS, CLOTH DOLL**, molded and painted features, blonde mohair wig, cloth body, white dress, brown leather shoes, stamped mark back of head (blurred)

**208 19" AMERICAN GIRL. BLACK SKIN**, brown glass sleep eyes, OM with teeth, black mohair wig, ethnic dress (few face rubs)

**209 2 - R JOHN WRIGHT FELT DOLLS, PAINTED FEATURES**, 1 - 6 1/2" "Fleur" No 181/250, & 6 1/2" "Flit" 181/250 for the UFDC 50th anniversary in original boxes (1 has a tear)

**210 12" BISQUE K\*R 30, BLUE GLASS SLEEP EYES**, OM with teeth, blonde mohair wig, BJCB, white dress with 14" lift top doll trunk with 3 dresses, hats, & mohair bear

**211 21 1/2" PHILADELPHIA BABY**, stockinet head with oil painted features, cloth body, antique green outfit, brown leather boots, (wear & crazing)

**212 2 - WOODEN TOYS / GAMES: 1 - 17 3/4" VICTORIAN "FINE TABLE CROQUET" GAME**, WALNUT CASE, TABLE WEBBING & CLAMPS FOR FIELD, POSTS, BALLS, MALLETS, & WICKETS WITH LITHO OF GAME BEING PLAYED, & 1 - 14" ANTIQUE PAINT DECORATED NOAH'S ARK, SLIDING WALL, EX RICHARD WRIGHT COLLECTION

**213 14 1/2" FULPER SHOULDER HEAD**, blue glass sleep eyes, CM, brown mohair wig, BJCB (both hands damaged), white dress (melting),

**214 LOT OF 2 - SMALL ALL BISQUE DOLLS**, 1 - 4 3/4" brown glass eyes, OM with teeth, blonde mohair wig, painted yellow socks & black strap shoes, antique blue outfit, bent arms, & 1 - 4 1/4" painted features, long blonde braided wig, antique blue dress (melting), black painted 3 strap shoes, bent arms

**215 LOT OF 2 - SMALL ALL BISQUE DOLLS**, 1 - 4" blue glass eyes, CM, blonde mohair wig, antique black outfit, painted socks & black shoes, & 1 - 5" blue glass eyes, CM, long blonde braided mohair wig, antique soldier outfit (melting), red stripe legs with black painted buckle shoes

**216 LOT OF 2 - SMALL ALL BISQUE DOLLS**, 1 - 5" blue glass sleep eyes, OM with teeth, blonde mohair wig, antique red dress, high painted black socks with brown shoes, & 1 - 5" blue glass sleep eyes, CM, blonde mohair wig, green suit, brown painted shoes

**217 LOT OF 2 - SMALL ALL BISQUE DOLLS**, 1 - 5 1/2" blue glass eyes, CM, blonde mohair wig, antique brown silk dress & bonnet, yellow painted 4 strap shoes, & 1 - 6" brown glass eyes, CM, long braided blonde mohair wig, antique brown dress with apron, brown painted 2 strap shoes

**218 LOT OF 2 - SMALL 4 1/2" ALL BISQUE DOLLS**, 1 - brown glass eyes, CM, long blonde mohair wig, painted brown shoes/white socks, red silk dress (facial pock under chin), & 1 - brown glass eyes, CM, long blonde mohair wig, painted brown shoes/white socks, yellow silk dress

**219 16" SCHOENHUT GIRL 16/102**, incised mark, brown carved hair with pink bow in back of head, white dress with plaid trim, red leather Schoenhut shoes (facial & hair rubs) & stand

**220 16" SCHOENHUT GIRL 16/106, WHITE PAINT CARVED BONNET**, BROWN CARVE HAIR IN FRONT OF BONNET, PAINTED FEATURES, BROWN INTAGLIO EYES, GREEN DRESS, WHITE SCHOENHUT SHOES & STAND, SCHOENHUT OVAL LABEL, (FACIAL RUBS & 1 AREA OF TOUCHUPS), CAROL'S BOOK PAGE 79, ILLUSTRATION 155

There will be no inspections of dolls / lots after the auction begins

*Withington Auction, Inc. - October 20, 2022*



**221 19" SCHOENHUT GIRL, 19/311, INCISED MARK**, painted features, brown intaglio eyes, blonde mohair wig, O/CM, pink dress, white leather Schoenhut shoes & stand, (facial chips)

**222 16" SCHOENHUT GIRL 16/**, painted features, incised mark, blonde mohair wig, brown intaglio eyes, CM, blue stripe dress (stains), black leather Schoenhut shoes (wear), (chip & crazing to chin area)

**223 19" SCHOENHUT BOY, 19/206**, PAINTED FEATURES, BROWN CARVED HAIR, BLUE INTAGLIO EYES, OM WITH TWO TEETH, FADED BLUE OUTFIT, IMPRESSED MARK TOP OF BACK, WHITE LEATHER SCHOENHUT SHOES & STAND, (FACE TOUCHUP, HEAD RUBS, SLIGHT PEELING), SEE CAROL'S BOOK PG.86, ILLUSTRATION 171, 172, 173

**224 14" SCHOENHUT 14/308, INCISED MARK**, painted features, blue intaglio eyes, CM, white dress, white Schoenhut shoes & stand, (facial rubs, lip chip)

**225 21 ½" SCHOENHUT 21/105, DECAL MARK**, painted features, brunette molded/carved hair w/pink ribbon, brown intaglio eyes, CM, white dress, Schoenhut. shoes (missing 1 buckle) & stand, (hair rubs, facial crazing)

**226 15 - PIECES OF THE LARGE SCHOENHUT STORE DISPLAY HUMPTY DUMPTY CIRCUS PIECES, 13 ½" CLOWN**, PAINTED FEATURES, LEATHER EARS, FELT HAT (HOLES), 6 - 19" WHITE LADDERS, 1 - 4 ¾" BARREL, 2 - 4 ½" STANDS, 1 - 14" L ELEPHANT, PAINTED EYES, WOOD TUSKS, ROPE TAIL, LEATHER EARS, 1 - 15" L DONKEY, LEATHER EARS, ROPE, TAIL, (ALL HAVE WEAR & RUBS)

**227 16" SCHOENHUT GRAZIANO BOY, 16/203**, PAINTED FEATURES, INCISED MARK, CARVED BLONDE HAIR, OM WITH TEETH, BLUE WHITE SAILOR SUIT, WHITE LEATHER SCHOENHUT SHOES (REPLACED), (HEAD RESTORED BY FRANK J MAHOOD)

**228 16" SCHOENHUT BOY, 16/406, PAINTED FEATURES**, incised mark, blonde mohair wig, OM with 2 teeth, blue overalls, (rubs, chips, crazing on face no shoes)

**229 14" SCHOENHUT GIRL, 14/312**, Painted features, incised mark, blonde mohair wig, brown intaglio eyes, CM, blue stripe outfit, white leather Schoenhut shoes & stand, (some facial crazing)

**230 19" SCHOENHUT BOY, 19/405/813, INC. MARK**, PAINTED FEATURES, BROWN INTAGLIO EYES, CM, BLUE STRIPE RUSSIAN SUIT, BLACK SCHOENHUT SHOES, BUTTON, & STAND, (FACIAL RUBS, CHIN TOUCHUP), SEE CAROL'S BOOK PG. 218 ILLUSTRATION 455

**231 12" SCHOENHUT BABY, PAINTED FEATURES, CM**, blue eyes, long white dress, white leather shoes, (arm rubs, hair area rubs)

**232 21" SCHOENHUT GIRL, 21/311, INCISED MARK**, painted features, brown intaglio eyes, blonde mohair wig, CM, blue floral dress, blue leather Schoenhut shoes & stand, (professionally restored ?)

**233 21" SCHOENHUT BOY 21/407, INCISED MARK**, painted features, brown intaglio eyes, CM, blonde mohair wig (sparse), redressed red jacket & white pants, new Schoenhut shoes, (facial rubs)

**234 21" SCHOENHUT GIRL 21/309, INCISED MARK**, painted features, brown intaglio eyes, OM with 2 teeth, white/pink dress, white Schoenhut shoes & stand, (facial rubs, crazing touchups)

**235 19" SCHOENHUT 19/311, INCISED MARK**, painted features, blue intaglio eyes, blonde mohair wig, O/CM, yellow/brown plaid dress, brown Schoenhut shoes (wear), (nose repair), & stand

**236 15" SCHOENHUT SCHNICKEL-FRITZ, IMPRESSED MARK** TOP OF BACK, PAINTED FEATURES, BRUNETTE MOLD & HAND FINISH HAIR, BLUE EYES, ORIGINAL BLACK PAINT ON INSIDE OF MOUTH TO MAKE HIM LOOK OPEN MOUTH, WHITE/GOLD/BLUE SAILOR OUTFIT, WHITE LEATHER SCHOENHUT SHOES & STAND, (NOSE REPAIR, FACIAL RUBS), SEE CAROL'S BOOK PAGE 150 ILLUSTRATION 313, ALSO INCLUDED IS AN 8x10 COLOR PHOTO PROOF & AN INVOICE FROM NANCY SMITH 12-3-04



221



222



223



224



225



226



227



228



229



230



231



232



233



234



235



236





237



238



239



240



241



242



243



244



245



246



247



248



249



250



251



252

**237 19" SCHOENHUT BOY 19/405**, incised mark, painted features, brown intaglio eyes, blonde mohair wig, CM, blue pin stripe outfit, white Schoenhut shoes (wear) & stand, (some facial wear/scratches, & crazing)

**238 16" SCHOENHUT 16/316 ALL ORIGINAL IN ORIGINAL BOX (WEAR & TEARS) "MISS DOLLY"**, SEE CAROL'S BOOK PAGES 117-118 ILLUSTRATION 241-242, BROWN EYES, PAINTED FEATURES, DARK BLOND MOHAIR WIG, UNION SUIT, BROWN SOCKS & SHOES, SCHOENHUT PIN

**239 19" SCHOENHUT GIRL, 19/311, INCISED MARK**, painted features, blue intaglio eyes, CM, pink overcoat, pink Schoenhut shoes & stand, (facial/nose & neck rubs, see Carol's book Pg. 229 illustration 483

**240 16" SCHOENHUT BOY 16/205 INCISED MARK**, painted features, blue intaglio eyes, CM, brown carved hair, white/pink outfit, white leather Schoenhut shoes & stand, (wear and facial cracking)

**241 20" SCHOENHUT MANNIKIN**, ALL ORIGINAL IN TWEED SUIT, STRIPED SILK SHIRT & FINE SILK TIE, BLACK MEN'S OXFORDS, BROWN PAINTED INTAGLIO EYES, HAIR CARVING TO AUGMENT COMB MARKS, (SOME WEAR TO CLOTHES)

**242 14 1/2" SCHOENHUT INFANT DOLL "TOOTSIE WOOTSIE"**, PAINTED FEATURES, BLUE INTAGLIO EYES, "DRIZZLED ON BLONDE HAIR", OM WITH TEETH, BLUE SUIT, (LIGHT FACIAL & HAIR PEELING, HAND RUBS)

**243 19" SCHOENHUT GIRL, PAINTED FEATURES, BLUE INTAGLIO EYES**, CARVED BROWN HAIR WITH COMB MARKS, CREAM BONNET WITH RED & YELLOW FLOWERS, GREEN LEAVES & GILT TRIM, DECAL MARK, RED SCHOENHUT SHOES & STAND, 19/106

**244 14" SCHOENHUT GIRL, 14/313, INCISED MARK**, painted features, brown intaglio eyes, CM, blonde mohair wig, white dress, white leather Schoenhut shoes & stand, (restored by Frank Mahood)

**245 15 1/2" SCHOENHUT BOY 16/400 , INCISED MARK**, PAINTED FEATURES, BLUE INTAGLIO EYES, CM, BLONDE MOHAIR WIG (SPARSE), BLUE SHIRT/ BROWN PANTS, NO SHOES, (FACIAL RUBS & TOUCHUPS), SEE CAROL'S BOOK Pg. 64, ILLUSTRATION 124 & 125

**246 16" SCHOENHUT GRAZIANO GIRL 16/103**, painted features, blue intaglio eyes, blonde carved hair, incised mark, dressed in blue/white outfit, white Schoenhut shoes & stand (facial touchups & chips, nose dent), see Carol's book page 23 & 24 illustrations 28, 29, 30, & 31

**247 16" SCHOENHUT GIRL 16/304/306, INCISED MARK**, painted features, blue intaglio eyes, blond mohair wig, brown plaid outfit, brown leather Schoenhut shoes & stand, (nose, facial, & hand rubs, touchups), see Carol's book Pg. 36 illustration 59 & 60

**248 16" SCHOENHUT BOY TRANSITION 16/202**, PAINTED FEATURES, BLUE INTAGLIO EYES, BLONDE MOLDED/CARVED HAIR, CM, DRESSED IN BLUE SUIT, SCHOENHUT WHITE SHOES (WEAR) & STAND, SEE CAROL'S BOOK Pg. 54, ILLUSTRATION 101 & 102, (WEAR TO FACE & HEAD)

**249 16" SCHOENHUT 16/200 BOY, PAINTED FEATURES**, blue intaglio eyes, blond wavy hair with neck curls, CM, dressed in blue/white sailor suit, Schoenhut white leather shoes, incised mark, (areas of rubs), see Carol's book page 25, illustration 34

**250 16" SCHOENHUT 16/101 GRAZIANO, PAINTED FEATURES**, BLUE SQUINTY EYES, OM WITH 4 TEETH, BLONDE MOLDED/CARVED HAIR, WHITE DRESS WITH PINK & BLACK STRIPES, SEE CAROL'S BOOK PAGE 20 ILLUSTRATIONS 21 & 22, (FACIAL & HAND RUBS, STAINED SOCKS), SCHOENHUT SHOES & STAND

**251 16" SCHOENHUT GIRL, PAINTED FEATURES, BLUE INTAGLIO EYES**, carved carmel blond molded hair, white/red design dress, Schoenhut shoes & stand, incised mark, 16/103, (wear to back of head, possible forehead touchups)

**252 16 1/2" GRAZIANO SCHOENHUT WOMAN, PAINTED FEATURES**, BLUE INTAGLIO EYES, CARVED BLONDE HAIR WITH TOPKNOT, WHITE DRESS WITH GEOMETRIC BAND, EARLY INCISED MARK, BLUE SCHOENHUT SHOES & STAND, (WEAR TO HEAD & FACE AREAS, DAMAGE TO LITTLE FINGER LEFT HAND), 16/10

There will be no inspections of Dolls/Lots after the auction begins

Withington Auction, Inc.

34

Dolls at Auction - Oct 20, 2022

There will be no Inspections of dolls / lots after the auction begins

Withington Auction, Inc. - October 20, 2022



- 253 16" SCHOENHUT 16/311, INCISED MARK**, painted features, blonde mohair wig (trimmed), CM, blue/white dress, blue leather Schoenhut shoes & stand, (facial crazing, chip)
- 254 16" SCHOENHUT 16/103, PAINTED FEATURES**, carved blonde hair with 2 ribbon bows, blue intaglio eyes, CM, incised mark back top, blue dress (faded, stains), white Schoenhut shoes, (repairs & chips to face)
- 255 16" SCHOENHUT BLACK BOY, PAINTED FEATURES**, O/CM, brown intaglio eyes, carved black hair, white cotton shirt, blue cotton pants, Schoenhut shoes & stand, (body paint peeling, paint touchup areas)
- 256 16" SCHOENHUT 16/104, PAINTED FEATURES**, blue intaglio eyes, impressed mark top of back, carved blonde hair, print dress, red leather Schoenhut shoes & stand, a Leslie model, (doll head appears to be mint, a professional restoration?)
- 257 16" SCHOENHUT GIRL, 16/301**, incised mark, blue intaglio eyes, impressed mark, brown mohair wig, blue/white check dress, white leather Schoenhut shoes (wear) & stand (facial rubs, touchups)
- 258 16" SCHOENHUT GIRL, 16/300?, INCISED MARK & 1 back of head**, painted features, blue intaglio eyes, CM, blonde mohair wig (trimmed), black Schoenhut shoes (wear) & stand
- 259 15 ½" SCHOENHUT BOY 16/813, INCISED MARK**, PAINTED FEATURES, BROWN INTAGLIO EYES, CM, BLONDE MOHAIR WIG, BROWN/WHITE STRIPE SUIT, WHITE SCHOENHUT SHOES & STAND, (SOME FACIAL CRAZING AT FOREHEAD), DOLL COLLECTORS OF AMERICA BLUE RIBBON 2018
- 260 16" SCHOENHUT GIRL, 16/300?**, pouty face, incised mark, painted features, blue intaglio eyes, CM, brown mohair wig with 2 blue bows, yellow/blue stripe dress, Schoenhut shoes & stand, (nose peel)
- 261 16" SCHOENHUT 16/102 GIRL, INCISED MARK**, painted features, CM, blue intaglio eyes, carved brown hair with blue bow in back of head, blue check dress (faded wear), Schoenhut white leather shoes (1 buckle missing) & stand, (hair rubs)
- 262 14" SCHOENHUT BOY 2 14/205, Painted features**, blue intaglio eyes, carved brown hair, incised Schoenhut mark, white underwear, Schoenhut shoes & stand (some wear, facial touchup area)
- 263 16" SCHOENHUT GIRL, 16/305?**, painted features, incised mark, blue intaglio eyes, OM with 6 teeth, blonde mohair wig with front braid, white dress, brown leather Schoenhut shoes & stand, (facial rubs, some peeling & touchups areas)
- 264 16" SCHOENHUT GIRL, PAINTED FEATURES**, blue eyes, blonde mohair wig, white under garment, red Schoenhut shoes & stand, (facial wear & touchups), incised mark, 16/307
- 265 SCHOENHUT WEDDING PARTY CONSISTING OF 6 DOLLS. THIS WEDDING PARTY BY SCHOENHUT APPEARS TO BE UNIQUE. FIVE OF THE SIX CHARACTERS ARE COMPLETELY ORIGINAL AND DRESSED BY THE FACTORY. THERE IS ALSO A FAMILY RESEMBLANCE IN SEVERAL OF THE DOLLS ADDING TO THE ASSUMPTION THAT THIS COLLECTION WAS MADE TO COMMEMORATE A SPECIFIC WEDDING. SEE FULL PAGE FOR DESCRIPTION & PHOTO**
- 266 19" SCHOENHUT RING MASTER MANIKIN SERIES**, CARVED SOCKET HEAD, PAINTED FEATURES, TRIMMED MUSTACHE & GOATEE (LIKE THE "LION TAMER"), INTAGLIO BROWN EYES, IN ORIGINAL FACTORY OUTFIT OF BLACK TOP HAT, RED FELT TAILS, HIGH BLACK BOOTS (WEAR AND STAINING TO CLOTHING & BOOTS), 1ST PLACE RIBBON 2019 DOLL COLLECTOR'S OF AMERICA MEETING, **A VERY RARE DOLL**
- 267 16" SCHOENHUT BOY 16/404 DRESSED AS A BASEBALL PLAYER**, BLONDE MOHAIR WIG, PAINTED FEATURES WITH BLUE INTAGLIO EYES, DRESSED IN BLUE SUIT WITH CATCHER'S VEST & BASEBALL GLOVE ON LEFT HAND, BLACK SCHOENHUT SHOES & STAND, (NOSE RUB)
- 268 16" SCHOENHUT INCISED MARK ON TOP OF BACK & circle C mark back of head**, painted features, blue intaglio eyes, blonde mohair wig, no clothes, (light facial crazing)



253



254



255



256



257



258



259



260



261



262



263



264



265



266



267



268





269



270



271



272



273



274



275



276



277



278



279



280



281



282



283



284

**269 16" SCHOENHUT BOY 16/204, INCISED MARK,** PAINTED FEATURES, BROWN INTAGLIO EYES, BROWN CARVED HAIR, CM, DRESSED IN RED SUIT, BROWN SCHOENHUT SHOES (WEAR) & STAND, (FACIAL RUBS/SCRATCHES, HAND WEAR), SEE CAROL'S BOOK PG. 56, ILLUSTRATION 106

**270 16" SCHOENHUT 16/403, INCISED MARK,** painted features, CM, blonde mohair wig, black tails, new shoes, (upper & lower lip peeling, replaced hands)

**271 16" SCHOENHUT 16/100 GIRL,** PAINTED FEATURES, BLUE INTAGLIO EYES, BLONDE MOLDED/CARVED HAIR, CM, TRANSITION PERIOD, BROWN/PLAID DRESS (HOLES), SEE CAROL'S BOOK PG. 44 & 45, SCHOENHUT SHOES & STAND (NEW SHOES)

**272 16" SCHOENHUT 16/406 BOY,** painted features, inc. MK. brown intaglio eyes, OM with two teeth blonde mohair wig, white/blue suit w/star, Schoenhut white shoes & stand, (touchup- mouth, check chips)

**273 16" SCHOENHUT 16/601 BOY,** painted features, blue intaglio eyes, blonde carved hair, CM, chambray boy blue suit & bloomer pants, brown Schoenhut shoes & stand, see Carol's book Pg. 207, illustration 428

**274 19" SCHOENHUT GIRLS, 19/,** painted features, brown eyes, CM, blonde mohair wig (unglued), impressed mark, pink/white dress, white leather Schoenhut shoes (wear) & stand (facial crazing & paint touchups)

**275 16" SCHOENHUT 16/605 BOY, PAINTED FEATURES,** blue intaglio eyes, strong hair modeling, OM with teeth, original white Norfolk 1912 suit, see Carol's book 55, illustrations 103, 104, 105, Schoenhut white leather shoes & stand (small areas of rubs)

**276 16" SCHOENHUT "FREIDA", SCHOENHUT LABEL DECAL** ON TOP OF BACK, PAINTED FEATURES, DECAL PAINTED BLUE EYES, BLONDE MOHAIR WIG, WHITE NIGHT DRESS, WHITE LEATHER SHOES, SCHOENHUT PIN, DOLL HEAD IS A PORTRAIT OF PHYLISS SCHOENHUT O'HARE, SEE CAROL'S BOOK PG. 172 & 173

**277 16" SCHOENHUT 16/300, INCISED MARK,** painted features, blue intaglio eyes, CM, white/fuschia outfit, white leather Schoenhut shoes & stand, (facial touchups & crazing)

**278 16" SCHOENHUT GIRL, 16/301, INCISED MARK,** painted features, brown intaglio eyes, CM, red Dorothy cape, red leather shoes, (facial touchups & peeling)

**279 11" SCHOENHUT GIRL TODDLER, DECAL LABEL BACK** of head & shoulders, CM, painted features, blue intaglio eyes, brown mohair wig, whited dress, white leather Schoenhut shoes, stand, (facial rubs & crazing)

**280 16" SCHOENHUT BOY 16/406/813, INCISED MARK,** painted features, blue intaglio eyes, blonde mohair wig, OM with teeth, blue/white stripe outfit, blue leather Schoenhut shoes (wear) & stand, (facial & hand rubs, nose tip touchup)

**281 16" SCHOENHUT BOY SOLDIER, 16/401,** PAINTED FEATURES, BLUE INTAGLIO EYES, BLONDE MOHAIR WIG, BLUE WOOL JACKET WITH GOLD TRIM & BUTTONS, BLUE CAP, WHITE PANTS WITH HIGH BLACK BOOTS, SCHOENHUT SHOES, 2 - SWORDS & SCHOENHUT STAND, (NOSE RUB & AREAS OF REPAINT & TOUCHUPS)

**282 16" SCHOENHUT BOY, 16404, INCISED MARK,** painted features, blue intaglio eyes, blonde mohair wig, CM, tan burlap type outfit, white leather Schoenhut shoes & stand, ( facial touchups, chips)

**283 16" SCHOENHUT 16/101 GIRL ATTRIB. TO MR. LESLIE,** PAINTED FEATURES, BLUE INTAGLIO EYES, BLONDE CARVED HAIR WITH BLUE RIBBON, OM WIT TEETH, BLUE/WHITE SAILOR OUTFIT, INCISED MARK TOP OF BACK, SCHOENHUT WHITE SHOES & STAND, SEE CAROL'S BOOK PG. 46 ILLUSTRATION 81 & 82, (REPAIRS TO NOSE & RIGHT CHECK)

**284 16" SCHOENHUT 16/603 BOY, IN ORIGINAL BOX (AS IS),** PAINTED FEATURES, BLONDE CARVED HAIR, BLUE INTAGLIO EYES, INCISED MARK TOP OF SHOULDERS, BLUE COVERALLS STRIPED SHIRT, BROWN SCHOENHUT SHOES & STAND, WITH CAROL'S TYPED DESCRIPTION

There will be no inspections of Dolls/Lots after the auction begins

Withington Auction, Inc.

38

Dolls at Auction - Oct 20, 2022

There will be no Inspections of dolls / lots after the auction begins

Withington Auction, Inc. - October 20, 2022



**300 20" EFFANBEE "AMERICAN CHILDREN" NAMED "GLORIA ANN" BY HER ORIGINAL OWNER DARTHEA BORN IN 1928.** THE DOLL WAS PHOTOGRAPHED BY SALLY ANDERSON-BRUCE FOR A US POSTAGE STAMP. SHE HAS HER OWN DOLL, A WEE PATSY & WARDROBE. GLORIA ANN COMES WITH EXTENSIVE WARDROBE & OUTFITS APPROX. 20, MADE AFTER DARTHEA'S CLOTHING, SEE INCLUDED WRITTEN DOCUMENTATION, WITH BLUE RIBBON FROM THE DOLL COLLECTOR'S OF AMERICA 2013 ANNUAL MEETING, SEE "REFLECTIONS ON FASHION" 2005 BY CAROL CORSON

*Withington Auction, Inc. - October 20, 2022*



*Withington Auction, Inc.*

4

*Dolls at Auction - Oct 20, 2022*





301



302



303



304



305



306



307



308



309



310



311



312



313



314



315



316

**301 18" CARVED WOOD HEAD, UPPER TORSO, arms, & legs, painted features, cloth lower body, CM, black painted hair, antique wool outfit, black painted shoes, (areas of facial touchups)**

**302 19 1/2" EFFANBEE DEWEES COCHRAN CHILD COMPO DOLL, painted features, CM, brown HH wig, blue dress, white shoes**

**303 21" SCHOENHUT BOY 21/405, IMPRESSED MARK, painted features, brown intaglio eyes, CM, blonde mohair wig, white leather Schoenhut shoes, red jacket & white pants**

**304 2 - 20" EFFANBEE DEWEES COCHRAN "AMERICA'S CHILDREN" CHILD COMP DOLLS, painted features, blonde HH wig, blue floral dresses, white shoes, see "Reflections on Fashion" 2005 by Carol Corson**

**305 18" BLUE METAL DOLL TRUNK WITH APPROX. 10 KAMKINS DRESSES & accessories.**

**306 4 - SMALL ALL BISQUE DOLLS, 1 - 5" Bonnie Babe, 1 - 5 1/2" Kestner Oriental, black mohair wig, Kestner label, brown glass sleep eyes, OM with teeth, 1 - 6" toddler, blue glass eyes, OM, 1 - 6 1/2" parian, painted features (neck repair)**

**307 LOT OF 3 - CLOTH DOLLS, 2 - 16" Raggedy Ann & Andy's (wear & stains), 1 - cloth mammy doll, & 5 - Raggedy Ann & Andy books**

**308 2 - SCHOENHUT "ROLLY-DOLLY" SANTA'S, PAPER MACHE ON WEIGHTED BASES, PAINTED FEATURES 11 1/2" & 7" TALL, (SOME WEAR, CRAZING, & CHIPS)**

**309 14" ARTIST DOLL "LYDIA" BY HEDWIG DOLLS IN THE QUAKER STYLE, painted features, mohair wig, from the books of Marguerite de Angeli, compo body, red Quaker outfit**

**310 14" ARTIST DOLL "HANNAH" BY HEDWIG DOLLS IN THE QUAKER STYLE, painted features, mohair wig, from the books of Marguerite de Angeli, compo body, yellow floral Quaker outfit**

**311 14" ARTIST DOLL "ELIN" BY HEDWIG DOLLS IN THE QUAKER STYLE, painted features, mohair wig, from the books of Marguerite de Angeli, compo body, red/white Quaker outfit**

**312 18" SCHOENHUT FAIRMOUNT FARMS HORSE-DRAWN MILK WAGON, GREEN, RED, & WHITE PAINT, WOOD WHEELS, 2 - CASES OF 12 MILK BOTTLES, (REPLACED REAR AXLE, DAMAGED FRONT WHEELS, 1 DAMAGED SIDE CURTAIN) WITH A 9" HARNESS HORSE ON WHEELED PLATFORM PULL TOY (ALL AS IS)**

**313 18" FELT & FUR PAPER MACHE MALE LION, glass eyes, weighted swivel neck, (some facial wear & body rubs)**

**314 BOX LOT OF 12 PCS. ASSORTED ANTIQUE DOLL CLOTHES, red wool early prints, dressing gowns, various sizes**

**315 36" LONG X 16" WIDE X 17" TALL, ANTIQUE GRAIN-PAINTED LIFT TOP, 6 board, blanket box on bun feet, interior till, with some clothes/sewing contents, (repair to lid, rubs/scratches to finish, replaced hinges)**

**316 24" LONG X 12" WIDE X 9 1/2" TALL, DOVETAILED, ANTIQUE PINE LIFT TOP BOX, blue with colored star decorations (paint is later), w/ asst. antique doll's clothes inside, (lid is loose, wear to areas, split in top)**

There will be no Inspections of dolls / lots after the auction begins

*Withington Auction, Inc. - October 20, 2022*



**317 15" REINDEER, E. GERMAN, FUR COVERED, 2- PT**, key wind mechanism (no key), antlers, head moves

**318 14" ARTIST DOLL "SUZANNE" BY HEDWIG DOLLS IN THE QUAKER STYLE**, painted features, mohair wig, from the books of Marguerite de Angeli, compo body, red & floral Quaker outfit

**319 16" LONG, 19C SKIN COVERED SHEEP PULL TOY ON WOOD BASE** & metal wheels, glass eyes, wood base is false grained, (couple areas of wear on sheep)

**320 LOT OF 3 - MAGGIE IACONO "MAGGIE MADE" DOLLS**, 1 - 7" felt, painted features, "Julia", green dress, 1 - 6 1/2" felt, painted features, "Fairy" purple outfit, 1 - 8" felt, painted features, "Kelsey", in original boxes

**321 2 - JANE DAVIES CLOTH ARTIST DOLLS, "BONEKA"**, painted features, 1 - 5 3/4" "Carla Larson" 7/100, & 1 - 5 3/4", "Johann Larson" 7/100, in original boxes

**322 CIRCA 1850'S BENJAMIN POTTER CRANDALL UNUSUAL ANTIQUE VELOCIPEDE, 31"L X 28" TALL**, MUSTARD PAINT WITH RED PIN STRIPPING, CARVED HORSE HEAD, BOW BACK WINDSOR-TYPE CHAIR-SEAT, LARGE WOOD/METAL SPOKE WHEELS, TWO LONG TURNED PUSH / PULL ARMS, BOTTOM BRAND B P CRANDALL CORTLAND ST N (WHEN HE WAS IN NY) (WEAR, SPLIT TO BACK OF BOW REPAIRED), VERY UNUSUAL FORM

**323 44" LONG, B P CRANDALL 19TH C ROCKING HORSE**, wood base & rockers, leather saddle, paint decorated, carved horse head

**324 ANTIQUE MANDARIN ROBE OWNED BY DR. DOUGLAS DAVIDSON OF CLAYMONT, DELAWARE** circa 1915-19 while the doctor taught at the Yale School of Medicine in Changsa, China, a gift as a wedding present, blues/purple/golds

**325 LOT OF 2 - 36" LONG SLEIGH ROCKING HORSE WITH DOUBLE HORSE HEAD RUNNERS**, red/black paint (wear), & 20" red paint sleigh with metal runners

**326 3 - SMALL ALL BISQUE DOLLS, 1 - 4 1/4"**, BROWN GLASS EYES, CM, braided brown mohair wig, blue/white paint shoes & socks, pink dress (badly worn, 1 - 4 1/2" blue glass eyes, CM, blonde mohair wig, black/white paint shoes & socks, red dress (fading), & 1 - 4" blue glass eyes, CM, blonde mohair wig, blue dress, black/white paint shoes & socks

**327 2 - R JOHN WRIGHT FELT DOLLS: 1 - 5" "Piglet" 217/1000**, painted features, green knit outfit, & 8 1/2" "Tiger" 117/100, painted features in original boxes

**328 LOT OF 4 CHILD / DOLL ANTIQUE LADDER BACK CHAIRS: 1 - 11" T green paint**, ash splint seat, 1 - 17" T, black with gold & salmon stripping, replaced flat reed seat, 1 - 14 1/4" T green with yellow flower decoration, cloth seat, & 1 - 15 1/2" T arm chair, blue w/ red/yellow/black floral decoration, orig. rush seat (all have wear)

**329 LOT OF 6 - 19TH C DRESSES FOR YOUNG** toddler/large doll

**330 18" LIFT TOP TRUNK FILLED 30+ PCS DOLL'S CLOTHING** - includes Schoenhut clothes & hats

**331 6 3/4" MAGGIE BESSIE ARTIST-MADE, BY PATTY REILLY & LILLY YOCUM**, True Friends #1, painted features, tagged white dress

**332 6 3/4" IZANNAH WALKER ARTIST-MADE**, cloth doll by Patty Reilly & Lilly Yocum #18 True Friends, green pattern dress



317



318



319



320



321



322



323



324



325



326



327



328



329



330



331



332

There will be no Inspections of dolls / lots after the auction begins

*Withington Auction, Inc. - October 20, 2022*

There will be no inspections of Dolls/Lots after the auction begins

*Withington Auction, Inc.*

*Dolls at Auction - Oct 20, 2022*

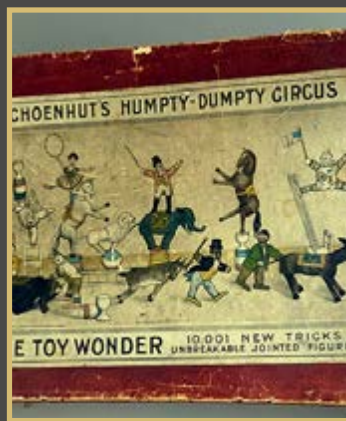




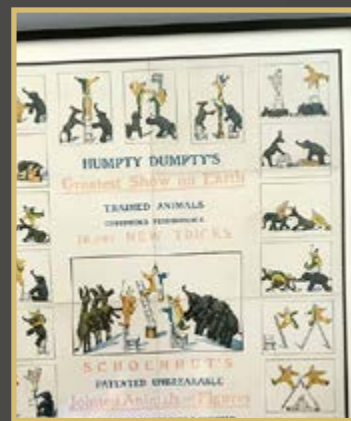
333



334



335



336



337



338



339



340



341



342



343



344



345



346



347



348

**333 LOT OF ANTIQUE DOLL CLOTHING IN REDS, HATS, socks, shoes, parasol, dresses, Jumeau advertising, rtc.adv.**

**334 7 - ANTIQUE CHILD'S DRESSES, RED, white, & prints**

**335 ORIGINAL SCHOENHUT "HUMPTY DUMPTY'S CIRCUS" BOX, 30"L x 18W x 5 1/2"T, great original label, (wear to box)**

**336 FRAMED SCHOENHUT "HUMPTY DUMPTY'S CIRCUS" poster, 32" L x 25"W**

**337 BOX LOT OF SCHOENHUT "HUMPTY DUMPTY'S CIRCUS" ACCESSORIES, ladders, chairs, stands, barrels, etc.**

**338 BOX LOT OF 40+ ASSORTED SCHOENHUT SHOES, originals & copies**

**339 BOX LOT OF 20+/- KAMKINS CLOTHES & accessories**

**340 TRAY LOT OF ANTIQUE WHITE DOLL CLOTHES approx. 40+/- Pcs.**

**341 CHILD'S PENNSYLVANIA BENCH IN OLD GREEN PAINT MID 19TH C, SCROLLED CREST RAIL, STENCIL & PIN STRIPPING, BLACK/RED/GOLD PAINT DECORATION, 6 LEGS WITH BOTTOM STRETCHERS, AGED PATINA (LEFT ARM REGLUED)**

**342 12 1/2" BISQUE INC. R 4/0 D, BLUE GLASS EYES, PE (NICKS), CM, BLONDE MOHAIR WIG, STRAIGHT WRIST COMPO BODY, BLUE DRESS, BROWN LEATHER SHOES**

**343 8" GERMAN PAPER MACHE GOOGLY, painted features, left glancing eyes, green cap, white jumpsuit**

**344 PAIR OF ALL BISQUE 5" MAX & MORITZ, BISQUE PROBABLY BY J.D. KESTNER, PAINTED CHARACTER FACES, SWIVEL NECKS, JOINTED SHOULDERS AND HIPS WITH MOLDED AND PAINTED SHOES, DRESSED. (SOME HEAD RUBS)**

**345 2 3/4" SMALL JOINTED, CHINA CLOWN, GERMANY 1870'S, MOLDED & PAINTED FEATURES, BLACK PAINTED EYES, BLACK HAIR UNDER MOLDED HAT, WIRE JOINTED LIMBS, SUIT OF WHITE/ORANGE/BLUE, SHIRT WITH HIGH LACE COLLAR, Provenance Maurine Popp collection sold at Skinner's April 12, 2003, Lot 507**

**346 5 1/2" ALL BISQUE SWIVEL NECK, BLUE GLASS SLEEP EYES, CM, long blonde mohair wig, antique blue outfit (melting), blue painted strap shoes**

**347 5 1/2" BROWN ALL BISQUE SWIVEL NECK, brown glass sleep eyes, brown mohair wig, OM with teeth, bent arms, ethnic outfit**

**348 6 1/2" ALL BISQUE SWIVEL NECK, BLUE GLASS EYES, CM, long blonde mohair wig, green/white antique dress, brown painted 2 strap shoes**

There will be no inspections of Dolls/Lots after the auction begins

Withington Auction, Inc.

46

Dolls at Auction - Oct 20, 2022

There will be no Inspections of dolls / lots after the auction begins

Withington Auction, Inc. - October 20, 2022



**349 6 ½" ALL BISQUE SWIVEL NECK, BLUE GLASS EYES**, CM, blonde mohair wig (thin), bent arms, antique dress, barefoot

**350 4 ½" MINIATURE WAX PICKLE W/ A SECTION CUT AWAY**, INSIDE ARE 8 MINIATURE WAX DOLLS, MOLDED & PAINTED WAX GREEN, PICKLE SEE LOT 312 MAURINE POPP COLLECTION AT SKINNER'S APRIL 12, 2003 FOR SIMILAR ITEM

**351 6" ALL BISQUE, BROWN GLASS EYES** (right eye has blue tint), CM, blonde mohair wig, long black stripe painted socks, painted brown shoes

**352 6 ¼" SMALL HATTED PARIAN WITH SQUEAKER IN TORSO**, Germany, mid-19th century, shoulder head doll with molded hat with purple luster feather, black hair, blue eyes, closed mouth, jointed at shoulders, cloth and kid torso (stains) over wire for mechanism (no sound), Parian lower body, purple luster flat boots, (old restoration in knee area), Provenance Ex Maurine Popp Collectio

**353 7 ½" ALL BISQUE SWIVEL NECK**, blue glass sleep eyes, OM with teeth, blonde mohair wig, blue painted socks, black painted 5 strap shoes, bent arms

**354 6 ½" BROWN ALL BISQUE SWIVEL NECK**, BROWN GLASS EYES, OM WITH TEETH, BLACK BRAIDED HAIR (SPARSE), BENT ARMS, ANTIQUE DRESS, BLACK LEATHER SHOES

**355 5 ½" ALL BISQUE SWIVEL HEAD**, blue glass eyes, CM, long blonde mohair wig, painted blue 2 strap shoes, antique blue dress

**356 2 - SMALL DOLLS, 1 - 4 ½" BISQUE INCISED 384 "SCREAMER"**, O/M w/ teeth, dimples, brown glass eyes, blonde mohair wig, compo body, painted shoes, antique white print dress & 1 - 4 ¾" incised J10 1920 44 All bisque "Whistler", O/M w/ teeth, blue glass eyes, blonde mohair wig, painted long blue socks, brown strap shoes, blue print dress

**357 6 ½" ALL BISQUE SWIVEL NECK 10**, blue glass eyes, CM, blonde mohair wig, bent arms, barefoot, white/red dress

**358 7 ¾" BROWN ALL BISQUE**, BROWN GLASS EYES, CM, BLACK MOHAIR WIG, WHITE DRESS, BLACK LEATHER BOOTS

**359 8" ALL BISQUE 102, BLUE GLASS SLEEP EYES**, PE, OM with 2 square teeth, blonde mohair wig, antique green dress, white leather shoes, (wrestler body), (right eye tiny corner fleck, chip toes left foot)

**360 8 ½" ALL BISQUE SWIVEL NECK S 5 H 886**, brown glass eyes, blonde mohair wig, OM with teeth, painted blue rib socks with black 2 strap shoes, white dress

**361 LARGE LOT OF 50++ ANTIQUE DOLL SOCKS & 1 pair of black boots** in a Christian Becker wood box

**362 18 ½" SCHOENHUT SOCKET HEAD GIRL**, carved braids & pink bow, painted features, blue intaglio eyes, CM, spring-jointed wooden body, blue/white sailor outfit, white Schoenhut shoes & stand, (facial & hair rubs & nicks)

**363 6 ½" SCHOENHUT WOOD HYENA, PAINTED FEATURES**, socket head, glass eyes, carved open mouth with painted teeth, leather ears (1 missing), jointed legs, rope tail, original painted ochre-color coat with black stripes, from Teddy's Adventures in Africa series, (wear/rub areas)

**364 9" SCHOENHUT WOOD RHINOCEROS**, painted features, original shaded brown finish with painted spots, jointed neck, glass inset eyes, open mouth, painted teeth, carved horn, leather ears, rope tail, jointed legs, (wear/rub areas & tear to 1 ear)



349



350



351



352



353



354



355



356



357



358



359



360



361



362



363



364

There will be no Inspections of dolls / lots after the auction begins

*Withington Auction, Inc. - October 20, 2022*

There will be no inspections of Dolls/Lots after the auction begins

*Withington Auction, Inc.*

*Dolls at Auction - Oct 20, 2022*





365



366



367



368



369



370



371



372



373



374



375



376



377



378



379



380

**365 8" SCHOENHUT WOOD ZEBRA**, painted features, swivel neck, open mouth, painted teeth, glass eyes, leather ears, cloth mane, rope tail with painted spots, and original painted finish of brown-striped tan hide with cream underbelly, from Teddy's Adventures in Africa series, (wear/rub areas)

**366 8" SCHOENHUT WOOD OSTRICH**, painted features with double-jointed neck, jointed legs, painted eyes, closed mouth, painted yellow beak, black and white paint-feathered body, black legs. (wear/rub areas), part of the Humpty Dumpty Circus

**367 7 1/2" SCHOENHUT WOOD LEOPARD**, painted features, double jointed neck, open mouth with painted teeth, glass eyes, yellow/cream paint, brown spots, rope tail, leather ears (left ear damage), (small areas of wear/rubs, overall very good condition), part of the Humpty Dumpty Circus

**368 7 1/2" SCHOENHUT WOOD TIGER**, painted features, double jointed neck, open mouth with painted teeth, glass eyes, leather ears, rope tail, yellow/cream paint with brown stripes, (small areas of wear/rubs), part of the Humpty Dumpty Circus

**369 8" SCHOENHUT WOOD POLAR BEAR**, painted features, jointed neck, glass eyes, leather ears, small rope tail, open mouth with painted teeth, (small area of wear/rubs), part of the Humpty Dumpty Circus

**370 SCHOENHUT BARNEY GOOGLE & SPARKPLUG** WOOD FIGURES, PAINTED FEATURES, BARNEY IN BLACK TOP HAT, BLACK JACKET & BLACK CHECK PANTS, SPARKPLUG SHOWS SIGNS OF WEAR, MISSING YELLOW BLANKET & REPLACED TAIL

**371 8" SCHOENHUT WOOD GORILLA**, painted features, two part head, swivel neck, painted brown eyes, leather ears, open mouth in roaring expression, two rows of teeth, jointing at shoulders and hips, (wear/rubs, no leather ears), from Adventures in Africa series

**372 2 - 9 1/2" SCHOENHUT WOOD SADDLE HORSES** from The Humpty Dumpty Circus, painted features, brown glass eyes, leather saddles, 1 - very good condition, 1 - with rubs & wear, missing reins, replaced tail

**373 7 1/2" SCHOENHUT DRUMMER WITH BASS/CYMBAL STRAIGHT LEG** VERSION WITH BLACK FEET, PAINTED FEATURES, PART OF THE HUMPTY DUMPTY CIRCUS, LARGE BASS DRUM & CYMBAL IN LEFT HAND, ORIGINAL BAND OUTFIT, (FACIAL CRAZING, NOSE TIP & CHEEK TOUCHUP), NO HAT, PART OF THE SEVEN PIECE BAND

**374 7 1/2" SCHOENHUT HALICON HORN PLAYER**, STRAIGHT LEG VERSION WITH BLACK FEET, PAINTED FEATURES, PART OF THE HUMPTY DUMPTY CIRCUS, ORIGINAL BAND OUTFIT, (FACIAL/HEAD CRAZING, PART OF HORN WORKS MISSING), PART OF THE SEVEN PIECE BAND, NO HAT

**375 7 1/2" SCHOENHUT CORONET PLAYER**, STRAIGHT LEG VERSION W/ BLACK FEET, PAINTED FEATURES, PART OF THE HUMPTY DUMPTY CIRCUS, ORIG. BAND OUTFIT, HAT, (HEAD/NECK REPAIRS, FACIAL CRAZING) PART OF THE SEVEN PIECE BAND

**376 7 1/2" SCHOENHUT HALICON HORN PLAYER**, STRAIGHT LEG VERSION WITH BLACK FEET, PAINTED FEATURES, PART OF THE HUMPTY DUMPTY CIRCUS, ORIGINAL BAND OUTFIT, HAT, (FACIAL/HEAD CRAZING), PART OF THE SEVEN PIECE BAND

**377 SCHOENHUT SUBMARINE AND DREADNOUGHT NAVAL WAR TOY GAME** in original box No 280/50 patent April 6, 1912 (box as is), includes battleship & submarine, (working condition)

**378 8" SCHOENHUT WOOD ZEBU**, painted features, jointed neck and legs, sculpted hump, leather horns and ears, rope tail, brown glass eyes, closed mouth, from the Adventures in Africa series, very good condition (few body rubs)

**379 10" SCHOENHUT WOOD GIRAFFE**, painted features, double-jointing of neck, glass inset eyes, open mouth, painted teeth, wooden horns, leather ears, jointing of legs, spotted rope tail, tan/cream painted finish with brown patterned spots, white underbelly, from Teddy's Adventures in Africa series, (rubs & wear)

**380 8" SCHOENHUT WOOD LION**, painted features, carved jointed neck, well-defined mane with shaded hair, very defined painted nose, closed mouth with painted teeth, glass eyes, jointed legs, rope tail, from Adventures in Africa series, style 2, (some head rubs very good condition)



**381 6" SCHOENHUT WOOD GAZELLE, PAINTED FEATURES**, jointed neck, painted eyes, red mouth, leather horns & ears (ears mostly worn off), jointed legs, leather tail, from the Humpty Dumpty Circus

**382 7 ¾" SCHOENHUT WOOD AFRICAN NATIVE**, painted features, two piece head (visible joint), native outfit with spear, (slight facial crazing), from Teddy's Adventures in Africa

**383 8" SCHOENHUT WOOD AFRICAN CHIEF STYLE LL**, painted features, purple coat version (1 moth hole back of coat), black check pants, white top hat, from Teddy's Adventures in Africa

**384 8" SCHOENHUT WOOD TEDDY ROOSEVELT**, PAINTED FEATURES, FROM TEDDY'S ADVENTURE IN AFRICA, TEDDY IS DRESSED IN HIS ORIGINAL SAFARI OUTFIT WITH GUN (MAYBE A REPLACEMENT, NO PISTOL, RIGHT SLEEVE HAS A TEAR), (SMALL TOUCHUP ON TIP OF NOSE)

**385 SCHOENHUT TEDDY'S ADVENTURES IN AFRICA BACKDROP ON MUSLIN APPROX. 18"x60"**, DEPICTING VARIOUS SCENES ALONG THE SAFARI, & USED AS A VERY COLORFUL BACKDROP FOR THE VARIOUS FIGURES/ANIMALS, PRINT LABEL LOWER RIGHT CORNER, (LIGHT WEAR & A FEW TINY HOLES)

**386 2 - SCHOENHUT ANIMALS, 1 - 9 ½" HIPPO**, painted features, glass eyes, OM with white paint teeth, leather ears, leather tail, (body rubs, & 9½" Camel, 1 hump closed mouth glass eyes, painted features, 1 leather ear, rope tail, (body rubs, visible neck joint)

**387 7" SCHOENHUT CAMEL, BACTRIAN 2 HUMP GLASS EYE**, painted features, leather ears, rope tail, (body & leg rubs)

**388 8" SCHOENHUT RINGMASTER STYLE LL RED COAT, PAINTED FEATURES**, black hat, black boots, yellow/red whip, part of the Humpty Dumpty Circus, (facial rubs, moth holes)

**389 8" SCHOENHUT LADY RIDER BISQUE HEAD, PAINTED FEATURES**, green/red outfit, red shoes (fading 1 moth hole in green), part of the Humpty Dumpty Circus

**390 8" SCHOENHUT MARY & LAMB FIGURES AND ACCESSORIES** FROM THE CHILDREN'S NURSERY RHYME, PAINTED FEATURES, WEARING ORIGINAL COSTUME INCLUDING STRAW HAT?, PAINTED BLUE STOCKINGS, BLACK SHOES; LAMB WITH GLASS EYES, RED RIBBON & ORIGINAL BELL; SCHOOL DESK AND BENCH & FEEDING TROUGH FOR LAMB, BENCH & TROUGH ASSEMBLED, (SOME RUBS)

**391 6" SCHOENHUT WOOD WOLF, PAINTED FEATURES**, glass eyes, open mouth with white teeth, 2 piece swivel neck, rope tail, leather ears (missing right ear), (minor rubs)

**392 7" SCHOENHUT WOOD BUFFALO, PAINTED FEATURES, CARVED MANE**, glass eyes, swivel neck, leather horns, rope tail, (minor rubs, small chip right rear leg)

**393 5" SCHOENHUT WOOD RABBIT**, painted features, glass eyes, swivel neck, leather ears (damage), leather tail, (rubs)

**394 5 ½" SCHOENHUT WOOD CAT, 1 PART HEAD, PAINTED FEATURES**, carved ears, hair whiskers (partial), leather tail, glass eyes, (rubs & wear)

**395 2 - SCHOENHUT WOOD WHITE WITH RED PLATFORM HORSES**, painted features, glass eyes, open mouth, leather ears, fabric manes (partial), dappled white, (wear rubs)

**396 8 ½" SCHOENHUT WOOD SEA LION, BALL & CHAMPAGNE BALANCING BOTTLE** (with label), painted features, glass eyes, open mouth with white teeth, leather ears & flippers (missing 1 ear), red/white/blue/ball, (wear/rubs, 1 chip)



381



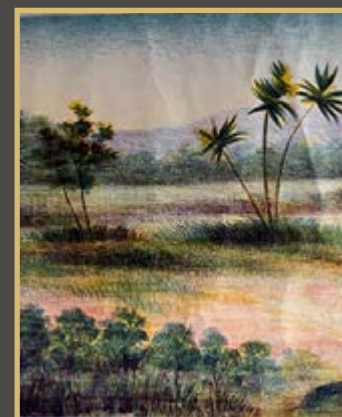
382



383



384



385



386



387



388



389



390



391



392



393



394



395



396





397



398



399



400



401



402



403



404



405



406



407



408



409



410



411



412

**397 7" SCHOENHUT WOOD PIG, PAINTED FEATURES**, glass eyes, open mouth, leather ears, rope tail, (rubs, wear)

**398 2 - SCHOENHUT WOOD ANIMALS**, 1 -8" goat, painted features, glass eyes, open mouth, leather ears, horns, tail, & goatee, & 1 - 7" burro, painted features, glass eyes, open mouth, leather ears, rope tail, hole in belly for platform, (rubs & wear on both)

**399 7" SCHOENHUT WOOD PIG, PAINTED FEATURES**, glass eyes, open mouth, leather ears (1 missing), rope tail, spotted variety (very worn)

**400 SCHOENHUT CHARIOT SHOW WAGON WITH CLOWN & GLASS EYED BURRO**, clown driven chariot (breaks), pulled by a burro, has an embossed paper mache panel wrapped around a wooden base where the clown stands, the base has wheels, pulled by a burro with a wheeled platform base, Clown has white suit (stains), with 3 red buttons & American flag

**401 5" SCHOENHUT WOOD RABBIT, PAINTED FEATURES**, glass eyes, swivel neck, leather ears, leather tail, (heavy wear/rubs)

**402 2 - 9" SCHOENHUT WOOD COWS, PAINTED FEATURES**, glass eyes, leather ears & horns, ( 1 tail missing, 1 replaced), collar with bell (1 apart), swivel necks, (rubs/wear 1 chip)

**403 11" SCHOENHUT WOOD KANGAROO**, painted features, glass eyes, open mouth, swivel neck, leather ears (1 missing), (wear & rubs)

**404 2 - SCHOENHUT WOOD POODLES**, 1 - 7" carved head & mane, glass eyes, painted features, rope tail, style 3 ( rubs & 1 small area of touchup), & 1 - 7 ¾" cloth mane, glass eyes, rope tail, open mouth, (wear to mane & rubs)

**405 2 - PIECES OF 19TH C. PENNSYLVANIA PAINTED TOLEWARE**, 1 - 10 ½" TALL HANDLED TEAPOT, HAND-FLORAL DESIGN, BLACK BACKGROUND WITH YELLOW & RED GEOMETRIC & FLORAL DECORATION (SOME AREAS OF WEAR), & 1 - 4" TALL 4" ROUND COVERED SUGAR, HAND-PAINTED DECORATION, BLACK BACKGROUND WITH YELLOW/RED/GREEN GEOMETRIC/FLO-RAL/LEAF DECORATION, (ATTRIB. TO FILLEY TIN SHOP PHILADELPHIA), (WEAR & RUBS)

**406 4 ½" MINIATURE QUAKER KEEPSAKE COVERED PINE LAP BOX**, rounded corners, lap base & top, what appears to be paper mache embossed leaf & floral designs on top & sides, (small area of loss/ wear)

**407 4" BLACK ALL BISQUE KESTNER INCISED 164 "LULLAH"**, dark brown glass eyes, CM, black mo-hair wig, pink stripe cotton dress, barefoot, with letter of provenance, original owner was Natalie Savage Carl-son children's book author

**408 2 - 5" ALL BISQUE GOOGLY KESTNER 292**, right glancing brown glass eyes, impish mouth, blonde mohair wig, painted black shoes & blue socks, ethnic dress

**409 LOT OF 10 PAIR OF ANTIQUE DOLL SHOES & BOOTS**, French & German makers, assorted sizes, styles, etc.

**410 LOT OF 12 PAIR OF ANTIQUE DOLL SHOES**, boots, few socks, mostly French

**411 15" R JOHN WRIGHT "MARCELLA" 25/100 WITH RAGGEDY ANN & ANDY**, felt dolls, painted fea-tures, in original box with documents

**412 16" R. JOHN WRIGHT FELT DOLL "HANNAH"**, felt doll, painted features, blonde mohair wig, red plaid dress, brown leather shoes



**413 10 ½" LONG BLUE BOX MARKED "TROUSSEAUX"**, 5 outfits for a French Mignonette inside, (box as is)

**414 LOT OF 5 CARDBOARD/PAPER MINIATURE SUITCASES/BOX** full of tiny doll clothes & 3 dolls from the childhood collection of Ann Wyeth McCoy, Carol catalogued them for Bunch Auctions for the April 9, 2006 sale

**415 8" SCHOENHUT "BLACK DUDE" STYLE L**, from the Humpty Dumpty Circus, painted features, leather ears, depicts circus figure, black top hat, black felt tails, black/white check pants, (wear to face, clothes staining, moth holes)

**416 2 - SCHOENHUT MONKEY'S 8" & 7 ½"** from the Humpty Dumpty Circus, 1 - Dark Face, 1 - White Face, painted features, Dark Face has felt hat & felt outfit, White face has no clothes, rope tails, (wear & rubs)

**417 8" SCHOENHUT BISQUE HEAD LION TAMER** from the Humpty Dumpty Circus, painted features, arms bend at elbows, blue felt jacket with yellow trim, high black boots, with hoop & stick (hoop separation)

**418 SCHOENHUT REDUCED SIZE HUMPTY DUMPTY CIRCUS**, 3 - Clowns, Hobo, Ringmaster, Black Dude, Lady Rider, Camel, Pig, Hippo, Tiger, Goat, Lion, Donkey, Ostrich, Elephant, Donkey, Bear, Tiger, White Horse, Brown Horse, Zebra, & 3 - White chairs, (some have condition problems)

**419 2 - SCHOENHUT WOOD ANIMALS**, 1 - 12" Long Alligator, glass eyes, open mouth, 1 leather foot, (rubs), & 1 - Lion, glass eyes, carved mane, rope tail, (rubs)

**420 3 - SCHOENHUT CIRCUS PERFORMERS**, 1 - 8" Lady Acrobat, bisque head, painted features, purple outfit (heavy wear), 1 - 8" Lady Rider, bisque head, painted features, green felt/purple dress outfit, (fading), & 1 - 8" Gent Acrobat/Strongman, bisque head, painted features, (very worn clothing & broken left shoe sole), with weights

**421 3 - SCHOENHUT 8" WOOD CLOWNS**, painted features, cotton dress, 1 - 2 part head, earless, boat toes, Dresden footprint on chest, (rubs, costume stains), 1 - two part head, no head cone under hat, leather ears, (heavy crazing, costume stains & rips), & 1 - two part head with wood cone under hat, (1 ear missing, light facial crazing)

**422 8" SCHOENHUT CLOWN ALL WOOD, TO BE MOUNTED ON A ROLLY-DOLLY**, painted features, felt hat (wear, holes), with dowel to be mounted on a roolly-dolly, leather ears, (rubs & wear)

**423 3 - SCHOENHUT 8" WOOD CLOWNS, PAINTED FEATURES**, cotton dress, 1 - 1 part head, leather ears, (crazing & costume fading), 1 - two part head, no ears, boat toes, (rubs, crazing), 1 - two part head, leather ears, (crazing, costume stains)

**424 3 - SCHOENHUT 8" WOOD CLOWNS, PAINTED FEATURES**, cotton dress, 1 - two part head, earless, boat toes, Dresden footprint on chest, (light rubs, costume stains, 1 - two part head, red felt ears, Dresden footprint on chest, boat toes, (rubs, costume stains), 1 - two part head, pink felt ears, boat toes, (rubs, costume stains, rip)

**425 2 - SCHOENHUT ANIMALS**, 1 - 8" Schoenhut Buffalo, painted eyes, carved mane, leather horns, no tail, (rubs & wear), & 1 - 8" brown bear, painted eyes, leather ears, rope tail, (rubs & wear)

**426 6 ½" SCHOENHUT DEER, GLASS EYES**, leather ears & antlers (antlers replaced?), leather tail, (rubs & wear)

**427 2 - SCHOENHUT ANIMALS**, 1 - 8" Leopard, painted eyes, open mouth, rope tail (light wear), & 1 - 7" Donkey, painted eyes, no blanket, rope tail, (heavy head wear)

**428 2 - SCHOENHUT FIGURES**, 1 - 8" Ringmaster style V; 1-part head, painted features, red felt coat, white hat, (hole, wear to pants, & 1 - 8" Farmer painted features, 2 part head, (wear & soiled clothes)



413



414



415



416



417



418



419



420



421



422



423



424



425



426



427



428





429



430



431



432



433



434



435



436



437



438



439



440



441



442



443



444

**429 2 - SCHOENHUT ANIMALS**, 1 - 6" Bulldog, painted features, painted eyes, brindle, leather ears, leather tail, (rubs), & 1 - 6" Goose, painted features, painted eyes, (light wear)

**430 LOT OF 3 SCHOENHUT ITEMS**, 1 - 21L x 9" T, toy wooden cannon, red pinstripe on blue painted carriage with a gold painted barrel, 9"D wood wheels, 1 - 14"L x 7"T, toy wooden cannon, red pinstripe on blue painted carriage with a gold painted barrel, 6"D wood wheels, 1 - 24"L truck for large cannon, (minor rubs, cannon gold paint worn, sm. cannon missing elevation wheel, sm. cannon front barrel replacement, minor repairs)

**431 2 - SCHOENHUT ITEMS**, 1 - Cracker Jack the Clever Clown from the Humpty Dumpty Circus, in original box, (very worn, broken), with clown, ladder, chair, & barrel, (wear, staining), & Schoenhuts Comic Live Wire Acrobat, litho & painted base, clown on high wire (replaced), (wear)

**432 SCHOENHUT HUMPTY DUMPTY CIRCUS NO.21**-1 small size in original box, ladder, chair, small ball, small barrel, donkey, & clown, (box & contents show wear)

**433 LOT OF 3 SCHOENHUT ELEPHANTS**, 2 - glass eyes, blanket, head dress, leather ears,, rope tail (1 may have replaced trunk), (rubs & wear), 1 - painted eyes, blanket, head dress, leather ears, rope tail, (rubs & wear)

**434 HERD OF 11 SCHOENHUT ELEPHANTS**, 7 large, 4 small, 6 large - 2 with glass eyes, 5 - painted eyes, 4 small - painted eyes, (some have missing & replaced parts)

**435 17" R JOHN WRIGHT ST. NICK, FELT DOLL**, painted features, with string tag & note from R J Wright to Carol "Warm Wishes 92"

**436 7 - SCHOENHUT BURRO'S**, 6 - Glass eyed, 1 - painted eyes, various condition's of repair & restoration

**437 10" R JOHN WRIGHT "EEYORE" 115/1000** from the Christopher Robin & Pooh collection, excellent condition

**438 10" & 3" R JOHN WRIGHT "KANGA & ROO" 245/1000** from the Christopher Robin & Pooh collection, excellent condition

**439 11 1/2" R JOHN WRIGHT "THE PRIMROSE FAIRY" #225/250** in original box

**440 1 - HUMPTY DUMPTY CIRCUS NO. 16**-1 small size toy in original box, clown, ladder & chair, (box as is condition)

**441 3 - ANTIQUE CHILD'S/DOLL CHAIRS**, 1 - 27" T yellow paint decorated thumb back Windsor side chair, plank seat, yellow paint with dark green/black paint decorations, 1- 15"T cane seat, bamboo turnings, arm chair, 1 - 14"T ladder back side chair, rush seat, black paint with gold decoration

**442 8" SCHOENHUT MAX & MORITZ**, PAINTED FEATURES, 1 PART HEAD, FELT JACKETS (WEAR, MOTH HOLES,) , BROWN CHECK PANTS (WEAR), (FACIAL RUBS, PEELING)

**443 3 - SCHOENHUT HORSES, PAINTED EYES**, 1 - white small sizes, 1 brown & 1 white large size, (rubs & wear)

**444 SCHOENHUT MILKMAID**, 2 PART HEAD CENTER PART HAIR, PAINTED FEATURES, WHITE APRON, PLAID DRESS, WITH WHEELBARROW, STOOL, & RAKE



- 445 2 - SCHOENHUT LADY ACROBAT'S**, painted features, 1 part head, (wear & holes to costumes, shoe damage)
- 446 3 - 8 ½" HEUBACH**, 1 - 10876, 2 - 10777, all bisque, coquette type, painted features, 1 with gold hair ribbon, 1 with green bow & ribbon, brown painted shoes & socks, antique dresses
- 447 LOT OF 2 - 1 - 8 ½" SCHOENHUT "MISS QUACKY DOODLES"** with Volland sticker on foot, painted features, cloth bonnet, (wear & chips), 1 - 5" "Quackey Doodles", Volland sticker, painted features, (heavy wear)
- 448 LOT OF 3 - KAMKINS TYPE DOLLS, MOLDED & PAINTED** seamed heads, applied ears, painted hair (as is), faces have some repaint, 1 has a swivel neck (as is condition)
- 449 3 - 6" BISQUE HEAD PAINTED EYE GOOGLY DOLLS**, AM 255, AM 210, AM 320, painted features, compo bodies, painted shoes & socks, ( 1 has loose head, minor wear)
- 450 PLAYSKOOL PULLMAN SLEEP-DOLLY-SLEEP**, red paint metal replica of a Pullman sleeper birth, 11 ½" L x 9 ½" T, curtains, blankets, pillows, folding table, & 2 small all bisque dolls, girls & boy (missing handle, dents)
- 451 LOT OF 6 SCHOENHUT ARTIST & HUMPTY DUMPTY** Toy items, 3 - 7" clowns, 1 - chair, & 2 - roly-dolly's with clowns (artist made)
- 452 13" ICHIMATSU , MOLDED & PAINTED GOFUN**, INSET GLASS EYES, CM, HH WIG, ALL ORIGINAL COSTUME WITH PROVENANCE & LONG LETTER ABOUT DOLLS JOURNEY IN 1917.
- 453 2 - EARLY FRAMED WATERCOLORS**, 1 - 5" x 7" (pic), BIRDS EYE MAPLE FRAME OF YOUNG GIRL IN RED/ORANGE DRESS HOLDING A ROSE (SOME FADING TO PICTURE), PROBABLY ENGLISH, Ex MERRY MERRIT COLLECTION LOT #903 & 1 - 8 ½" x 7 ¾" 4 YOUNG WOMEN, ONE HOLDING A DOLL & HORSE PULL TOY ON FLOOR CIRCA 1830's, MAPLE FRAME
- 454 LOT OF SMALL ANTIQUE DOLL CLOTHES 30PCS.** +/-, shoes, socks, etc. & wicker basket
- 455 LARGE LOT OF ANTIQUE SINGLE** doll shoes 100 +/-
- 456 18 PAIR OF ANTIQUE DOLL SHOES**, various size & shapes, 1 pr. of Jumeau shoes
- 457 27 PAIR OF ANTIQUE DOLL SHOES**, various sizes & shapes, 1 pr. In original box
- 458 16" LIFT TOP TRUNK FILLED WITH KAMKINS** wardrobe & accessories
- 459 VERY LARGE BOX LOT 100++ PCS., OF BLEUETTE CLOTHING & ACCESSORIES**, MANY ZIP-LOCKS ARE LABELED IN FRENCH, AND FROM BLEUETTE EXHIBIT AT THE 2005 UFDC CONVENTION IN PHILADELPHIA, PA, & 4 BLEUETTE REFERENCE BOOKS
- 460 12 - SMALL DOLLS 2 ½" - 5" TALL, KEWPIE**, all bisque, doll house etc.



445



446



447



448



449



450



451



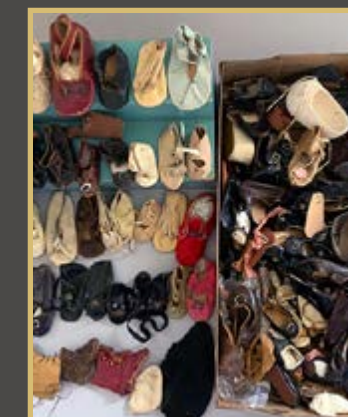
452



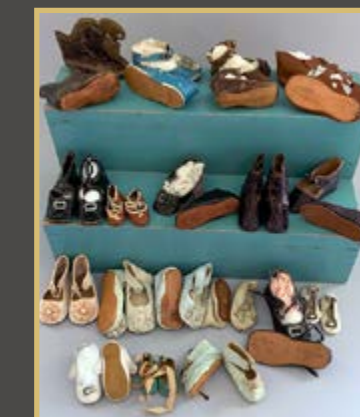
453



454



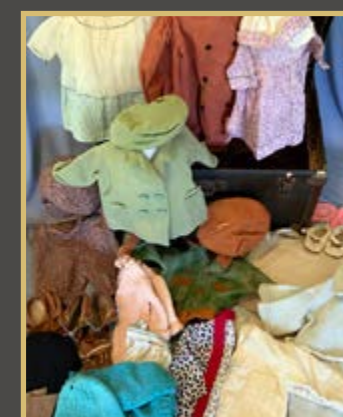
455



456



457



458



459



460





461



462



463



464



465



466



467



468



469



470



471



472



473



474



475



476

**461 3 - SMALL 4"- 4 ½" ALL BISQUE DOLLS** 1 - painted features, molded brown hair, black 4 strap painted boots, dressed as school girl, 1 - painted features, blonde mohair wig, white dress, brown 2 strap painted shoes, & 1 - painted features, blonde mohair wig, purple dress, purple painted shoes

**462 40 +- PIECES OF ANTIQUE WHITE** doll clothing

**463 16" KESTNER XL, BROWN** glass sleep eyes, CM, blonde mohair wig, straight wrist compo body, blue dress

**464 BOX LOT OF KAMKINS 25 +/- pcs.** clothing

**465 BOX LOT OF SCHOENHUT CLOTHING** 40+/-pcs.

**466 BOX LOT OF KATHE KRUSE** clothing 20+/-

**467 HEPPLEWHITE STYLE 3 DRAWER DOLL BUREAU**, WALNUT & PINE, STRING INLAY, DOVETAILED DRAWERS, BRASS PULLS, CLOTH REMNANT IN TOP DRAWER "MADE BY MY GRANDMA KILLS ABOUT 1872 SIGNED MAUDE L KILLS"

**468 LOT OF 12 SMALL DOLLS 1 ¾" - 4 ½"**, all bisque, china head, compo, frozen charlotte, etc.

**469 LOT OF ANTIQUE DOLL CLOTHES**, apx.15 pcs, old

**470 24" ARTIST SANTA, CLOTH PRINTED HEAD WITH PAINTED FEATURES**, cloth body, long green cape with fur trim (shedding, broken boot), large bag of toys, depicts an 19th C Santa

**471 17" R JOHN WRIGHT "CHRISTOPHER ROBIN & WINNIE THE POOH"** felt, painted features, 8" felt Pooh in original box (damaged), early series

**472 13" SCHOENHUT WOOD SAILBOAT "MERCURY"**, canvas sails, metal & wood keel, green paint on bottom, "Mercury labels on bow (partials), some replaced rigging, homemade stand

**473 LOT OF 4 SCHOENHUT TOYS: PAIR OF "WALKING WALLAPUS"**, small piano with 6 keys (as is), 18" lift top Xylophone, & 18 ½" Xylophone

**474 FRAMED OIL ON CANVAS OF 13 ½" X 16 ½" PORTRAIT OF MOTHER & CHILD**, PROBABLY LATE 19TH C EARLY 20TH C, CRAQUELURE, GOLD LEAF FRAME WAS PROBABLY SET INTO A LARGER FRAME (FRAME CHIP)

**475 ANNAPOLIS MARYLAND SIX DOLLAR CURRENCY NOTE** DATED MARCH 1ST, MDCCLXX, (1770), FOLD, SMALL TEAR

**476 SCHOENHUT HUMPTY DUMPTY CIRCUS NO 21-1 SMALL SIZE** original box with 2 - clowns (as is), & 2 - Moritz ( as is)



- 477 17" R JOHN WRIGHT "BRIDGET" B2-30**, felt doll, painted features, brown mohair wig (as is), a favorite doll of Carol's bunny (Yummy)
- 478 BOX LOT OF APPROX. 20 MOHAIR WIGS**, small & medium, mostly blonde
- 479 BOX LOT OF APPROX.. 20 MOHAIR & HH WIGS**, medium size, some French
- 480 4 - SCHOENHUT "ALPHIES" A-B-C BLOCKS**, 1 - No 26-AZ, 20 ¾" x 16" in original box with 5" paper litho ABC picture blocks (missing T & an extra PK, cover damage), & 2 - 7" x 4 ¾" small set by S. Shirran 1995
- 481 LOT OF SCHOENHUT CIRCUS PROPS & PERFORMERS, HOOP**, trapeze, tight rope base, 2 - bisque head Lady Acrobats, etc.
- 482 SCHOENHUT OPPORTUNITY BOX LOT, 2 CIRCUS CAGES**, 5 - painted eye Burros assorted sizes, 4 - Elephants assorted sizes, (some are Humpty Dumpty Toys & some are as is)
- 483 LOT OF 3 4" - 7 ½" HAND CARVED WOOD FIGURES**, 1 - pegged wooden mannequin type, articulated joints, 2 - Wooden He / She Figures - having one side male and the other side female articulated joints
- 484 2 - MADAME ALEXANDER HARD PLASTIC DOLLS**, 1 - 14" blue sleep eyes, CM, synthetic wig, original peach dress, & 1 - 11" blue sleep eyes, CM, synthetic wig, red dress
- 485 2 - SCHOENHUT ANIMALS (AS IS)**, 1 - 8" glass eyed Polar Bear (wear, joints are loose), & 1 - 8 ½" Camel, glass eyed, (kit form)
- 486 BOX LOT OF TINY ANTIQUE DOLL CLOTHING**, mignonette size, dresses, hats, slippers, accessories, etc.
- 487 BOX LOT OF ANTIQUE DOLL HATS, BONNETS**, etc., 15+-
- 488 4 - HARD PLASTIC & COMPO DOLLS 7" - 15"**, Baby Effanbee, H C Co baby, K&W 121/410, (all as is)
- 489 BOX LOT OF ASSORTED ANTIQUE DOLL HATS**, bonnets, etc. 20+-
- 490 BOX LOT OF ASSORTED ANGELS, ALL BISQUE**, wax, crèche type, etc. 4" - 10" tall
- 491 BOX LOT OF 14 ASSORTED 19TH & EARLY 20TH century child's dresses**
- 492 BOX LOT OF ASSORTED 19TH & 20TH century child's dresses**



477



478



479



480



481



482



483



484



485



486



487



488



489



490



491



492





493



494



495



496



497



498



499



500



501



502



503



504



505



506



507



508

- 493 3 - SMALL ARTIST DOLLS BY MERIEL MARLAR**, PAINTED FEATURES, APPROPRIATE CLOTHING, 1 - 6" IZANNAH WALKER 1998, 1 - 6 3/4" BLACK IZANNAH WALKER, & 1 - 6 1/4" IZANNAH WALKER
- 494 3 - SMALL DOLLS, 1 - 5" ALL BISQUE BABY IN WICKER TRUNK** with accessories (back of head repair), 1 - 7 1/2" all bisque by Horseman in white dress, & 1 - 8" Scootles compo in blue outfit
- 495 BOX LOT OF ASSORTED 19TH & 20TH C** doll coats, 15+- pieces
- 496 2 - WENDY LAWTON DOLLS**, 9" "Only Olivia #59, & 8 1/2" "Katrena" in original boxes
- 497 2 - WENDY LAWTON DOLLS**, 9 1/2" "Joy for Your Journey #88/250, & 8 1/2" "No Two Alike" #43 in original boxes
- 498 3 - WENDY LAWTON DOLLS**, 9" "Absolutely Abigail" #90/250, 8 1/2" "No Two Alike" #11, & 8 1/2" "Precisely Paloma" #73/250 in original boxes
- 499 BOX LOT OF ANTIQUE DOLL HATS**, bonnets, etc.
- 500 LOT OF 9 DOLL REFERENCE BOOKS INCLUDING QUEEN VICTORIA'S DOLLS** 1894 (w/ Color litho book plates) blue cover w/ gold leaf edition
- 501 BOX LOT OF ASSORTED** Schoenhut shoes
- 502 LARGE LOT OF ASSORTED** Schoenhut socks
- 503 LOT OF ASSORTED ANTIQUE SHOES & SOCKS**, some French
- 504 LOT OF ANTIQUE DOLL CLOTHING & ACCESSORIES**, parasols, dresses, hats, corset, etc.
- 505 SCHOENHUT BUILDING BLOCKS MINIATURE SIZE** Celebrated "Hill" Kindergarten Floor Blocks, original wood box, partial label, (some replacements), 22 1/2"L x 16 1/2"W
- 506 2 - BOX LOTS OF ASSORTED ANTIQUE WHITE DOLL & child's clothing**, fancy lace
- 507 LOT OF LAWTON DOLL ACCESSORIES**, & clothing
- 508 13 SMALL ARTIST & ALL BISQUE** dolls 2 1/2" - 6 1/2" tall



**509 4 - SMALL ALL BISQUE** dolls, 1 - 6" AM 351, 1 - 6 ½" Bye-lo baby, 1 - 6" All bisque, 1 - 5 ½" black all bisque (mk.31 ?)

**510 LOT OF ANTIQUE RED & WHITE DOLL DRESSES**, some French in an Au Bon Paris Marche box (as is)

**511 5 - SMALL ALL BISQUE DOLLS**, 1 - 3 ½" 331-8 painted features, top knot (manufacturing hole by hip), 1 - 6 ½" blue glass eyes, CM, bent arms, blonde mohair wig, no clothes or wig, 1 - 5 ½" Oriental 1, brown glass eyes, CM, red suit (right arm repair), 1 - 4 ½" dark bisque, brown eye, CM, ethnic outfit (need stringing), 1 - 5 ½" brown glass sleep eyes, CM, blonde mohair wig, red coat

**512 LOT OF ASSORTED DOLL ACCESSORIES**, shoes, gloves, smalls, etc.

**513 2 - DOLLS, 1 - 7 ½" BISQUE HANSI WXZ**, painted features, CM, molded hair, cloth body bisque arms, lederhosen, (facial & head rubs), & 1 - 14 ½" Hard plastic, painted features, synthetic blonde hair, Swiss outfit

**514 4 - CHINA/BISQUE HALF DOLLS** as pin cushions & tea cozy

**515 TRAY LOT OF 20 + BONNETS**, hat boxes, lace, muff, etc.

**516 2 - TRAY LOTS OF SCHOENHUT** clothes

**517 LOT OF 7 MISC DOLLS**, 1 - 11" black hair china shoulder head, 1 - 7 ½" black hair china with jointed wood body, 1 - 11" Queen Ann type head only on weighted base, 1 - 12" cloth molded face embroidered features, 3 - painted bisque half dolls, 2 - pincushion, 1 - lamp

**518 2 - TRAY LOTS OF ANTIQUE DOLL CLOTHES** 19th & 20th century

**519 LARGE LOT OF ASSORTED DOLL SHOES & SOCKS**, many singles, antique & modern

**520 12" SCHOENHUT BYE-LO BABY**, sleep eyes, cloth body, celluloid hands (left hand damage), white dress

**521 BOX LOT OF MODERN SCHOENHUT & SCHOENHUT** Collector's Club items

**522 4 - ANTIQUE CHILD'S/DOLL CHAIRS** 13" - 17" tall

**523 SILENT AUCTION ITEMS** - Several boxes of Carol's miscellaneous treasures... too good to throw away!! No Photos - Must be present to bid - Misc. table lot items

### \*\*\* The End of the Auction \*\*\*

All of us at Withington's would like to express our sincere thanks to all of you for sharing in the celebration of Carol Corson's Life with the dolls. Throughout her long life - she was known as a mentor, friend and teacher to so many, always willing to share her vast knowledge with others whom shared in her passion for the many facets of Doll Collecting. Her passing leaves a huge void in the sisterhood of dolls, that will probably never be filled.

Have a Happy and Healthy Holiday season and we anticipate some surprises in the New Year...  
Fuzzy Slippers Auctions... New Formats ... 2023 has to be a better year for us all!!

For upcoming Auction Schedule & Auction News...  
follow us on facebook or visit our WEB-site: [www.withingtonauktion.com](http://www.withingtonauktion.com)

There will be no Inspections of dolls / lots after the auction begins

*Withington Auction, Inc. - October 20, 2022*



509



510



511



512



513



514



515



516



517



518



519



520



521



522



145.01

There will be no inspections of Dolls/Lots after the auction begins

*Withington Auction, Inc.*

*Dolls at Auction - Oct 20, 2022*





The French Connection... Just a few of her favorite things.  
*The Carol Corson Doll Collection*



October 20, 2022



There will be no Inspections of dolls / lots after the auction begins  
*Withington Auction, Inc. - October 20, 2022*



**LOT # 265: SCHOENHUT WEDDING PARTY CONSISTING OF 6 DOLLS -**  
**(TO BE SOLD AS A LOT)**

THIS WEDDING PARTY BY SCHOENHUT APPEARS TO BE UNIQUE. FIVE OF THE SIX CHARACTERS ARE COMPLETELY ORIGINAL AND DRESSED BY THE FACTORY. THERE IS ALSO A FAMILY RESEMBLANCE IN SEVERAL OF THE DOLLS ADDING TO THE ASSUMPTION THAT THIS COLLECTION WAS MADE TO COMMEMORATE A SPECIFIC WEDDING. THE BRIDE IS THE UNIQUE FIGURE. SHE IS 19” (48CM.) TALL. HER HEAD IS GRAZIANO’S MODEL 300 PAINTED IN THE STYLE AND COLORS OF THE CLASSIC PERIOD. HER INTAGLIO EYES ARE A BRIGHT LIGHT BLUE. HER SKIN TONE IS THE PEACHIER COLOR OF THE POST 1911 DOLLS WITH THE ORANGER CHEEK BLUSH, BUT SHE HAS SINGLE STROKE EYEBROWS TYPICAL OF THE GRAZIANO MODELS. HER HAIR IS A THICK FINE TOSCA MOHAIR PARTED IN THE MIDDLE AND PULLED DOWN AND BACK INTO A SMOOTH CHIGNON WITH A BRAID AROUND IT. BY MOUNTING HER OLDER LOOKING GRAZIANO HEAD ON THE MANIKIN BODY, SHE HAS THE APPEAR- ANCE OF A YOUNG WOMAN RATHER THAN A CHILD. HER ORIGINAL CHINA SILK DRESS MELTED COMPLETELY AND HAS BEEN CARE- FULLY COPIED IN ANTIQUE SILK PONGEE. SHE CAME WITH BLACK MANIKIN STOCKINGS AND NO SHOES AS HER LONG DRESS COVERED HER FEET. SHE NOW HAS WHITE STOCKINGS AND SCHOENHUT FACTORY WHITE SLIPPERS. HER BOUQUET OF WAX ORANGE BLOS- SOMS IS ORIGINAL.

THE GROOM IS MODEL 21/407 WITH BROWN INTAGLIO EYES AND FEATHERED BROWN EYEBROWS AND A TOSCA (LIGHT BROWN) SIDE PART WIG USED ON THAT MODEL IN 1912 AND PROBABLY 1913. HE IS DRESSED IN A BLACK WOOL FELT TUXEDO, WITH SILK LINED LAPELS AND COVERED BUTTONS. HE HAS A WHITE SHIRT, TIES, AND VEST. HE ALSO HAS BLACK SCHOENHUT OX- FORDS AND STOCKING.

THE MINISTER IS A MANIKIN MODEL WITH BROWN PAINTED HAIR AND BLUE EYES. HIS VIBRANT COLOR IS ORIGINAL. HE IS DRESSED IN A LONG BLACK ROBE. UNDER HIS ROBE IS A WHITE SHIRT FRONT WITH A PADDED CLOTH WRAPPED AROUND HIS CHEST AND TACKED TO THE BACK OF HIS TORSO. HE HAS BLACK FELT TROUSERS, HE CARRIES A TINY BLACK LEATHER-BOUND BOOK TITLED “THE BABY’S BIBLE AND PRAYER BOOK” BY CECIL C. CARPENTER.

THE FLOWER GIRL IS DOLL 16/301/538 IN A LACE TRIMMED WHITE DRESS AND THAT WORN BY THE TRAINBEARER WERE NOT OFFERED AFTER THAT YEAR. HER SHORT BLONDE BOB IS THE STANDARD STYLE WORN BY THAT MODEL BEFORE 1917. SHE HAS WHITE STOCKINGS AND SLIPPERS.

THE RING BEARER IS DOLL 16/403/812 WITH PINK TRIM RATHER THAN THE STANDARD BLUE. HE CARRIES A SMALL PINK PILLOW TO HOLD THE RING. AFTER 1914 SUIT 812 IS IN THE FACTORY CATALOG WITH A CHOICE OF BLUE OR PINK TRIM. IT WAS OFFERED THROUGH 1918 WITH WHITE BRAID STRIPED ON THE SHIELD RATHER THAN A WHITE STAR. HIS SHOES AND STOCKINGS ARE FACTORY WHITE ORIGINALS. HE ALSO HAS A LIGHT BLOND BOB AND BLUE EYES LIKE THE FLOWER GIRL. THEIR ROUND FACES AND COLORING MAKE THEM APPEAR TO BE RELATED TO THE BRIDE.

THE LITTLE TRAINBEARER APPEARS RELATED TO THE GROOM. HER LEFT SIDE PART WITH HER BRUNETTE BOB SWEEPED TO THE RIGHT SIDE, AS WELL AS HER BROWN EYES, FIT WITH THE GROOM. THEY BOTH HAVE SLIMMER FACES AND STRONG CHINS. SHE IS MODEL 14/311, THE WIGGED VERSION OF THE “BONNET HEAD” (106). HER DRESS IS ANOTHER TOP OF THE LINE FROM THE 1914 DOLL CATALOG, NUMBER 539. SHE CAME WITHOUT THE SILK RIBBON SASH SHOWN IN THE CATALOG. BECAUSE HER SHOES AND STOCKINGS WERE PALE BLUE, WHICH HAVE FADED TO WHITE, I ADDED A PALE BLUE SILK RIBBON SASH. BOTH GIRLS HAVE MATCHING EDGE TRIMMED WHITE SILK HAIR RIBBONS, WHICH MAY BE WHY THEIR DRESSES DO NOT HAVE THE BRIGHT COL- ORFUL RIBBONS, WHICH ARE SHOWN IN THE CATALOG.

A SPECIAL FEATURE OF THIS SET IS THAT EACH CHARACTER HAS A DIFFERENT FACE, UNLIKE OTHER WEDDING PARTY MAN- UFACTURERS THAT USED THE SAME MODEL DOLL, ONLY VARYING THE WIGS AND COSTUMES TO INDICATE THE DIFFERENT MEM- BERS OF THE PARTY. UNFORTUNATELY, THE HISTORY OF WHY THE SET WAS MADE AND THE WEDDING IT COMMEMORATES HAS BEEN LOST, BUT FORTUNATELY THE SET HAS BEEN CAREFULLY PRESERVED TOGETHER IN ALMOST ENTIRELY ORIGINAL CONDITION.

*(Description by Carol Corson)*



Lot # 265 - Schoenhut Wedding  
Party of Six Character Dolls -  
All Original to be sold as one lot.



# Schoenhut - Teddy Roosevelt Adventures in Africa

